

Vitamin D deficiency and glycemic control among patients with type 2 diabetes mellitus in Jazan City, Saudi Arabia

This article was published in the following Dove Press journal:
Diabetes, Metabolic Syndrome and Obesity: Targets and Therapy

Hussain Darraj¹
Mohammed Badedi¹
Kirsten R Poore²
Abdulrahman Hummadi¹
Abdullah Khawaji¹
Yahia Solan³
Ibrahim Zakri¹
Abdullah Sabai¹
Majid Darraj⁴
Dhayf Alrahman Mutawwam¹
Mohammed Daghreeri¹
Safaa Sayed¹
Wael Alaallah¹
Abdulaziz Alfadhly⁵
Abdullah Alsabaani⁶

¹Jazan Health Affairs, Ministry of Health, Jazan, Saudi Arabia; ²Institute of Development Sciences, Faculty of Medicine, University of Southampton, Southampton, UK; ³Medical Affairs, Jazan University Hospital, Jazan University, Jazan, Saudi Arabia; ⁴Department of Internal Medicine, College of Medicine, Jazan University, Jazan, Saudi Arabia; ⁵Diabetic Center, Prince Mansour Military Hospital, Taif, Saudi Arabia; ⁶Department of Family and Community Medicine, College of Medicine, King Khalid University, Abha, Saudi Arabia

Background: The prevalence of vitamin D deficiency (VDD) is predicted to be high in patients with type 2 diabetes mellitus (T2DM), but the exact figure is not known in Jazan, Saudi Arabia. Emerging data suggests that VDD plays a role in glycemic control. The aim of this study was to measure the prevalence of VDD among T2DM patients and to investigate its association with patients' characteristics and glycemic control in Jazan.

Methods: This is an analytical cross-sectional study which recruited 309 patients with T2DM randomly from primary health care centers in Jazan. Logistic regression analysis was conducted to determine the VDD predictors and to examine the association of VDD and glycemic control.

Results: The VDD prevalence was found to be 60.8% in patients with T2DM. Age, gender, diabetic retinopathy (DR), dyslipidemia, glycemic control, and obesity were significantly associated with VDD, and all except obesity were independent predictors of VDD. There was a significant negative correlation between 25-hydroxyvitamin D and HbA1c. VDD was a significant independent predictor of poor glycemic control after adjustment for hypertension, DR, diabetic neuropathy, type of diabetes medication, diabetes duration, and education level.

Conclusion: In this Saudi Arabian population, VDD is highly prevalent in people with T2DM and is associated with poor glycemic control. Health education targeting patients with T2DM and national strategies regarding vitamin D fortification are needed to prevent VDD in Saudi Arabia. Earlier VDD diagnosis by health care providers may help to improve the outcome for patients with T2DM. Establishing the causal association between VDD and glycemic control and clarifying the biological role of vitamin D in T2DM are important aims for future studies.

Keywords: diabetes mellitus, T2DM, vitamin D deficiency, VDD, glycemic control, diabetes complication

Introduction

Globally, diabetes mellitus (DM) is a highly prevalent chronic disease that places a significant burden on the patient's life and health care costs.¹ "Diabetes mellitus is a heterogeneous metabolic disorder characterized by the presence of hyperglycemia due to impairment of insulin secretion, defective insulin action or both".² T2DM is the most common type of DM, affecting 90–95% of all patients with DM.³ In the UK, the reported prevalence of T2DM is 5.26%.⁴ In Saudi Arabia, a recent review study reported that the prevalence of T2DM is much higher, around 33%, and it is expected to increase to 45.8% by 2030.⁵ Therefore, it is important to investigate

Correspondence: Hussain Darraj
Jazan Health Affairs, Ministry of Health,
PO 1075, Abu Arish 45911, Saudi Arabia
Tel +96 656 717 1984
Email dr.h.d@hotmail.com

factors that might affect T2DM, such as vitamin D deficiency (VDD), to help provide information to improve the quality of T2DM care.

Vitamin D (cholecalciferol) is acquired through ultraviolet irradiation of the skin and vitamin D intake via dietary sources.⁶ Serum 25-hydroxyvitamin D level is the main circulatory indicator of vitamin D status,⁷ and (VDD is defined as a serum level of 25-hydroxyvitamin D lower than 20 ng/mL.⁸ High prevalence of VDD has been reported worldwide,⁹ including Saudi Arabia, where it was recently estimated to affect approximately 60% of the general population.¹⁰ VDD plays a central role in several non-skeletal diseases, such as DM and cardiovascular disease.¹¹

The co-occurrence of VDD and T2DM has been reported in several studies. For instance, in the UK, a cross-sectional study found that the prevalence of VDD tended to be higher in patients with diabetes than in healthy individuals (83% versus 70%).¹² In Saudi Arabia, a case-control study found that 76.6% of the patients with T2DM had VDD and 58.1% of the healthy participants had VDD.¹³ Overall, VDD in patients with T2DM was found to range from 30% to 91.4% across the literature.^{12–17} To our knowledge, no study has been conducted to measure the prevalence of VDD among patients with T2DM in Jazan. Therefore, a suitably designed cross-sectional study in Jazan is needed to determine the prevalence of VDD in patients with T2DM.

Despite the growing evidence which suggests that there is a link between VDD and high prevalence of T2DM, few research studies have investigated the possible connection between VDD and microvascular complications.¹⁸ For instance, some studies have suggested that DR,^{19,20} DN,^{19,21} and diabetic nephropathy (DNP)^{18,21} are significantly associated with VDD. Conversely, other studies showed that there was no significant association between VDD and DR,^{18,21} DN,¹⁸ and DNP.¹⁹ Overall, there are conflicting findings in the current literature regarding the association between VDD and microvascular complications in T2DM.

Good glycemic control is important in diabetes management as it reduces the risk of diabetes complications.²² According to the American Diabetic Association, HbA1c <7% is the optimal glycemic control.²² It has been suggested that VDD is associated with glycemic control in T2DM.²³ However, the role of VDD in glycemic control is not yet fully understood. Only a few research studies have investigated the link between VDD and glycemic

control.²⁴ A negative relationship between serum 25-hydroxyvitamin D levels and HbA1c in patients with T2DM has been observed in several populations, including patients in Saudi Arabia.^{24,25} Moreover, a low serum 25-hydroxyvitamin D level has been shown to be an independent predictor for HbA1c in patients with T2DM.¹⁸ In contrast, a cross-sectional study conducted in western India failed to show a significant association between serum 25-hydroxyvitamin D and HbA1c in patients with T2DM.¹⁴ To our knowledge, no study has investigated the association between VDD and glycemic control in patients with T2DM in Jazan.

Although the role of VDD in T2DM is not fully understood, there are a number of potential mechanisms that have been suggested to describe the role of vitamin D in DM, such as systemic inflammation via the formation and the effects of modulating cytokines, which lead to enhanced insulin sensitivity and promote beta-cell survival, and insulin resistance via inducing insulin receptor expression, thus increasing insulin sensitivity during glucose transportation, and pancreatic beta cell malfunction via a change of calcium flux, which can adversely affect beta cell function.²⁶ Moreover, obesity could be a confounder as VDD is typically associated with obesity due to 25-hydroxyvitamin D storage in fat tissue, which leads to low serum 25-hydroxyvitamin D leading to both insulin resistance and insulin sensitivity in T2DM.²⁶

This study aimed to study the prevalence of VDD and its association with microvascular complications and glycemic control in patients with T2DM in Jazan.

Materials and methods

Study design, area, and target population

An analytical cross-sectional design was applied in this study, which was conducted in Jazan, southwestern Saudi Arabia.²⁷ The population of Jazan is relatively homogeneous, with inhabitants sharing the same language, ethnicity, and religion.²⁷ Every patient with T2DM in Jazan is registered in a primary health care center. Therefore, the study sample was recruited from primary healthcare centers in Jazan.

Sample size and sampling technique

The total calculated sample size was 380 participants. The sample size calculation was conducted using Epi-Info software (version 7.2.2.6 for Windows, Centres for Disease Control and Prevention (CDC), Atlanta, GA, USA) using

the following parameters: CI, 95%; Alpha, 0.5; 76.6% expected frequency of VDD in cases of T2DM, which was obtained from a study carried out in southern Saudi Arabia.¹³ The computed sample size was 266, and then the rate of 30% was used to adjust for the expected non-response rate. The current study successfully recruited 309 out of the 380 participants using random sampling technique (Figure 1).

Inclusion and exclusion criteria

Patients with T2DM who were older than 18 years of age and those who signed informed consent were included. Individuals on vitamin D supplements and pregnant women were excluded.

Ethical considerations

Ethical approval for the current study was granted by the local ethics committee in Jazan (reference number: 1813). Informed consent was obtained by all participants.

Data collection

The data were gathered using structured face-to-face interviews with patients by a trained physician. During the interview, the physician will take sociodemographic and clinical data including age, gender, education level, work status, marital status, smoking status, height, weight, diabetes duration, type of diabetes medication, diabetes microvascular complications, and comorbidity). Blood samples were subsequently obtained from the participants to measure serum 25-hydroxyvitamin D and HbA1c levels.

Data processing and analysis

The data were coded with anonymous identification numbers in order to guarantee the privacy of the participants. A single data entry method was conducted by the principal investigator using the Statistical Package for the Social Sciences (version 24 for Windows, IBM Corp., Armonk, NY, USA). Body mass index (BMI) was categorized as underweight, normal, overweight, and obese according to BMI scores $<18.5 \text{ kg/m}^2$, from 18.50 to $<24.9 \text{ kg/m}^2$, from 25 to 29.9 kg/m^2 , and $\geq 30 \text{ kg/m}^2$, respectively, Vitamin D status as deficient when serum 25-hydroxyvitamin is $<20 \text{ ng/mL}$ or non-deficient when serum 25-hydroxyvitamin is $\geq 20 \text{ ng/mL}$, glycemic control status as good glycemic control when HbA1c level is $<7\%$ or poor glycemic control when HbA1c level is $\geq 7\%$. The continuous variables were described by mean and SD and the categorical variables by percentages and frequencies. Binary logistic regression analyses were used to assess the predictors of VDD and the predictors of glycemic control. A *P*-value of <0.05 was set for the statistical significance level.

Results

Population characteristics

Table 1 presents the participants' characteristics and their association with VDD. The results showed that the mean level of 25-hydroxyvitamin D was $19.4 \pm 6.7 \text{ ng/mL}$ and the mean level of HbA1c was $8.7 \pm 1.8\%$. Furthermore, around half of the participants had had T2DM for more than 10 years. Regarding microvascular complications amongst participants, DR, DNP, and DN were evident, with 35.3%, 4.9%,

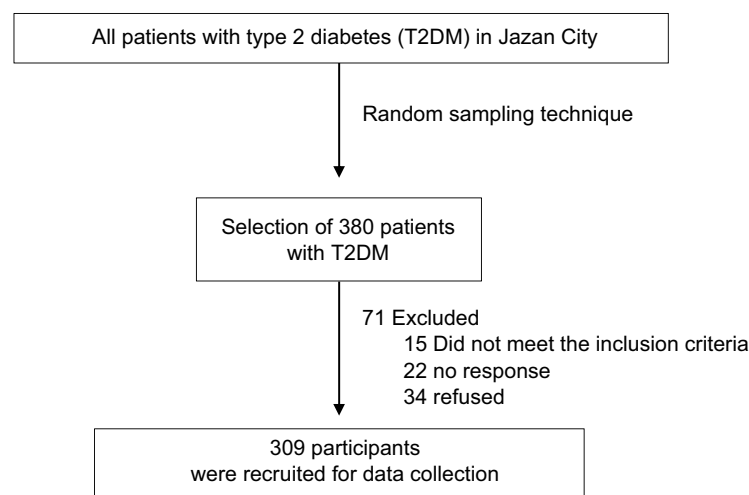


Figure 1 Participant enrolment and the sampling technique used in the current study.

Abbreviation: T2DM; type two diabetes mellitus.

Table 1 Sociodemographic and clinical characteristics of all participants, participants with VDD and participants without VDD

	Overall (n=309)	VDD, N (%)=188 (60.8%)	95% CI, 55.3–66.1%	No-VDD, N (%)=121 (39.2%)	95% CI, 33.9–44.7%	P
Age, years (mean ± SD)	58.9±12	54.2±11.8	52.9–55.4	58.4±12	57.1–59.7	0.003
Gender						
Male	130 (42.1%)	64 (49.2%)	40.8–57.7%	66 (50.8%)	42.3–59.2%	<0.001
Female	179 (57.9%)	124 (69.3%)	62.2–75.6%	55 (30.7%)	24.4–37.8%	
Education						
Educated	174 (56.3%)	106 (60.9%)	53.5–67.9%	68 (39.1%)	32.1–46.5%	0.975
Illiterate	135 (43.7%)	82 (60.7%)	52.3–68.6%	53 (39.3%)	31.4–47.7%	
Smoking status						
Nonsmoker	264 (85.4%)	156 (59.1%)	53.1–64.9%	108 (40.9%)	35.2–46.9%	0.127
Smokers	45 (14.6%)	32 (71.1%)	56.6–82.3%	13 (28.9%)	17.7–43.4%	
HbA1c						
DM controlled	68 (22.0%)	25 (36.8%)	26.3–48.6%	43 (63.2%)	51.1–73.7%	<0.001
DM uncontrolled	241 (78.0%)	163 (67.6%)	61.5–73.2%	78 (32.4%)	26.8–38.5%	
Diabetes duration						
≤10	159 (51.5%)	105 (66.0%)	58.4–72.9%	54 (34.0%)	27.1–41.6%	0.054
>10	150 (48.5%)	83 (55.3%)	47.34–63.1%	67 (44.7%)	36.9–52.7%	
DR						
Absent	200 (64.7%)	112 (56.0%)	49.1–62.7%	88 (44.0%)	37.3–50.9%	0.018
Present	109 (35.3%)	76 (69.7%)	60.6–77.6%	33 (30.3%)	22.4–39.5%	
DN						
Absent	278 (90.0%)	174 (62.6%)	56.8–68.1%	104 (37.4%)	31.9–43.2%	0.059
Present	31 (10.0%)	14 (45.2%)	29.2–62.2%	17 (54.8%)	37.8–70.9%	
DNP						
Absent	294 (95.1%)	180 (61.2%)	55.5–66.6%	114 (38.8%)	33.4–44.5%	0.541
Present	15 (4.9%)	8 (53.3%)	30.1–75.2%	7 (46.7%)	24.8–69.9%	
HTN						
Absent	103 (33.3%)	58 (56.3%)	46.7–65.5%	45 (43.7%)	34.5–53.3%	0.249
Present	206 (66.7%)	130 (63.1%)	56.3–69.4%	76 (36.9%)	30.6–43.7%	
DLP						
Absent	208 (67.3%)	118 (56.7%)	49.9–63.3%	90 (43.3%)	36.7–50.1%	0.034
Present	101 (32.7%)	70 (69.3%)	59.7–77.5%	31 (30.7%)	22.5–40.3%	
BMI						
Non-obese	176 (57%)	98 (55.7%)	48.3–62.8%	78 (44.3%)	37.2–51.7%	0.033
Obese	133 (43.0%)	90 (67.7%)	59.3–75.0%	43 (32.3%)	25.0–40.7%	

Notes: P, P-value <0.05 is the significance level, as tested by t test, chi-square and Fisher's Exact, where appropriate. Significant P-values are shown in bold.

Abbreviations: VDD, vitamin D deficiency (serum 25-hydroxyvitamin D <20 ng/mL); BMI, body mass index; DR, diabetic retinopathy; DNP, diabetic nephropathy; DN, diabetic neuropathy; HTN, hypertension; DLP, dyslipidemia; N, sample size.

and 10%, respectively. Oral antidiabetic medications were used in 46.6% of the participants, while 53.4% were being treated with oral antidiabetic agents plus insulin. The percentage of participants of normal, overweight, or obese was 18.5%, 38.5%, and 43%, respectively, with a higher obesity rate in females relative to males (69.2% versus 30.8%).

Prevalence of vitamin D deficiency and its association with the participants' characteristics

The prevalence of VDD in patients with T2DM was 60.8% (95% CI 55.3–66.1%), whereas for non-VDD patients with T2DM it was 39.2% (95% CI 33.9–44.7%). Younger age was more significantly associated with VDD (54.2±11.8 years) than older age (58.4±12 years) ($t(307)=3.03$, $P=0.003$). Additionally, the number of females with VDD was significantly higher than the number of males (69.3 versus 49.2, $\chi^2(1)=12.70$, $P<0.001$). There were significantly higher proportions of VDD in patients with DR (69.7%) than in patients without DR (56%) ($\chi^2(1)=5.58$, $P=0.018$). Patients with uncontrolled diabetes have significantly higher VDD rate (67.6%) than the patients with controlled diabetes (36.8%) ($\chi^2(1)=21.21$, $P<0.001$). Patients with dyslipidemia were also associated with significantly higher VDD compared to

those without dyslipidemia (69.3% and 56.7%, respectively, $\chi^2(1)=4.51$, $P=0.34$). There was a significant difference in the proportion of VDD between obese (67.7%) compared with non-obese (55.7%) participants ($\chi^2(1)=4.57$, $P=0.033$).

Table 2 shows the univariate and multivariate binary logistic regression analysis in order to identify the predictors of VDD in T2DM. At the 95% CI, the univariate logistic regression analysis showed that being younger, female, having DR, dyslipidemia, and uncontrolled diabetes were found to be statistically significant predictors of VDD among patients with T2DM in the study. The multivariate logistic regression analysis revealed that poor glycemic control was independently associated with VDD, with participants with poor glycemic control being 3.45 times more likely to be VDD than participants with good glycemic control. This was followed by the female gender, with females being 2.34 times more likely to be VDD than males in our sample. Dyslipidemia, DR, and age were found to be independent predictors of VDD, with age being the weakest predictor.

The association of vitamin D deficiency with glycemic control

Figure 2 shows a medium significant negative correlation between HbA1c and 25-hydroxyvitamin D levels in

Table 2 Logistic regression analysis of association between patient characteristics and VDD

Variable	Univariate analysis		Multivariate analysis	
	OR (CI 95%)	P	OR (CI 95%)	P
Age (years)	0.97 (0.95–0.99)	0.003	0.96 (0.94–0.98)	<0.001
Gender				
Male	1		1	
Female	2.33 (1.46–3.71)	<0.001	2.34 (1.38–3.94)	0.002
BMI				
Non-obese	1		1	
Obese	1.67 (1.04–2.66)	0.033	1.32 (0.78–2.22)	0.300
DR				
Absent	1		1	
Present	1.81 (1.10–2.97)	0.019	1.93 (1.07–3.47)	0.028
DLP				
Absent	1		1	
Present	1.72 (1.04–2.85)	0.035	2.12 (1.20–3.74)	0.010
HbA1c				
Controlled	1		1	
Uncontrolled	3.60 (2.05–6.31)	<0.001	3.45 (1.85–6.46)	<0.001

Notes: P, P-value; P of <0.05 is the significance level. The variables with odds ratios of 1 are the reference categories. Significant P-values are shown in bold.

Abbreviations: BMI, body mass index; DR, diabetic retinopathy; DLP, dyslipidemia.

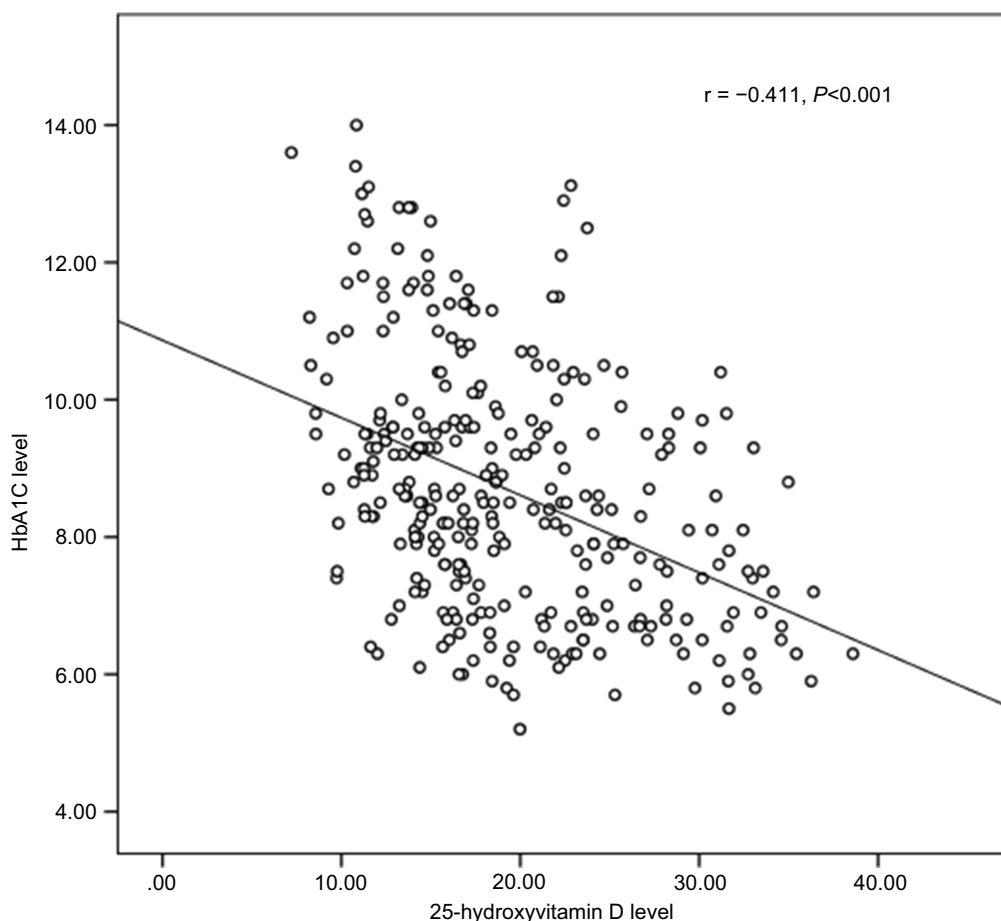


Figure 2 Correlation between vitamin D and glycemic control in all study participants.

patients with T2DM ($r=-0.41$, $p<0.001$), ie the lower Vitamin D level, the higher HbA1c. Moreover, the prevalence of poor glycemic control in patients with T2DM was 78% (95% CI: 73.1–82.3%). Table 3 shows that VDD, education (illiteracy level), a DM duration of >10 years, DR, DN, hypertension, and the type of diabetic medication (both oral and insulin) were significantly associated with glycemic control.

Table 4 illustrates the results of the univariate and multivariate binary logistic regression analyses used to examine the predictors of poor glycemic control. The univariate logistic regression analysis revealed with a 95% CI that VDD, illiteracy level, a DM duration of >10 years, DR, DN, hypertension, and taking both oral diabetic medication and insulin were significantly associated with poor glycemic control. The results of the multivariate binary logistic regression analysis showed a significant association between VDD and glycemic control after adjustment for the other covariates and that the odds of reporting poor glycemic control were 3.79 times

higher in patients with T2DM and VDD than in patients with T2DM without VDD.

Discussion

The current study included a total of 309 patients with T2DM and it is found that the prevalence of VDD in patients with T2DM was 60.8% in Jazan. Moreover, the study found that younger age, female gender, DR, dyslipidemia, poor glycemic control, and BMI (obese) were significantly associated with VDD and that all of them except BMI were independent predictors of VDD. In addition, there was a significant negative correlation between 25-hydroxyvitamin D and HbA1c. Further analysis revealed that VDD was a significant independent predictor of poor glycemic control after adjustment with hypertension, DR, DN, type of diabetes medication, diabetes duration, and education level.

The current study found a high prevalence of VDD in patients with T2DM (60.8%). This result is slightly lower than that of a previous study conducted in southern Saudi

Table 3 Participants' characteristics and their association with glycemic control (poor vs good)

Characteristics	Glycemic control (poor); N=241 (78%)	95% CI 73.1–82.3%	P
Age, years (mean ± SD)	56.5±12	55–58	0.096
Gender			
Male	95 (73.1%)	64.9–80.0%	0.075
Female	146 (81.6%)	75.2–86.6%	
Education			
Educated	125 (71.8%)	64.7–78.0%	0.003
Illiterate	116 (85.9%)	79.1–90.8%	
Diabetes duration			
≤10	114 (71.7%)	64.3–78.1%	0.006
>10	127 (84.7%)	78.0–89.6%	
DR			
Absent	139 (69.5%)	62.8–75.5%	<0.001
Present	102 (93.6%)	87.3–96.9%	
DN			
Absent	212 (76.3%)	70.9–80.9%	0.028
Present	29 (93.5%)	79.3–98.2%	
DNP			
Absent	227 (77.2%)	72.1–81.6%	0.142
Present	14 (93.3%)	70.2–98.8%	
HTN			
Absent	70 (68.0%)	58.4–76.2%	0.003
Present	171 (83.0%)	77.3–87.5%	
DLP			
Absent	163 (78.4%)	72.3–83.4%	0.821
Present	78 (77.2%)	68.1–84.3%	
Diabetes medication			
Oral	95 (66.0%)	57.9–73.2%	<0.001
Oral + insulin	146 (88.5%)	82.7–92.5%	
BMI			
Non-obese	131 (74.4%)	67.5–80.3%	0.082
Obese	110 (82.7%)	75.4–88.2%	
Vitamin D status			
Not deficient	78 (64.5%)	55.6–72.4%	<0.001
Deficient	163 (86.7%)	81.1–90.8%	

Notes: P, P-value; P of <0.05 is the significance level, as tested by t test, chi-square and Fisher's Exact, where appropriate. Significant P-values are shown in bold. The data for the good glycemic control group can be calculated based on the overall values from Table 1.

Abbreviations: BMI, body mass index; DR, diabetic retinopathy; DNP, diabetic nephropathy; DN, diabetic neuropathy; DLP, dyslipidemia; HTN, hypertension; M, mean; N, sample size.

Arabia, which found that 76.6% of patients with T2DM had VDD,¹³ however, there were certain limitations in this study which might have led to this higher rate, such as its case-control design and that the patients were recruited from tertiary hospitals.¹³ In line with our finding, previous studies have reported that the prevalence of VDD among patients with T2DM was around 60%.^{16,18,28} Several features of the current study sample may have influenced this high VDD prevalence. Firstly, most of the study sample were females. Furthermore, the female sex was independently significantly associated with VDD in our results, as shown by some^{29–32} but not all other studies.^{33,34} The traditional clothes might be a predisposing factor to VDD due to the reduction of sun exposure. Secondly, the majority of the current study's participants were overweight or obese. The rate of obesity was high in our sample and obesity was associated with VDD. Similarly, several studies have found a link between the excess weight and VDD in T2DM^{30,31,35} but others have not.^{14,18} A possible explanation for this association is that vitamin D is sequestered in the adipose tissue,²⁶ so patients with obesity report lower serum 25-hydroxyvitamin D levels. The current study found that there was a higher rate of obesity in females than in males, which could have led to the detected association between gender and VDD. However, when adjusted with other covariates, obesity loses its effects. It seems that obesity plays as a confounder in the relationship of VDD with T2DM. Thirdly, dyslipidemia was associated with VDD even after adjustment with other covariates, as shown previously.³⁰ The higher rate of VDD in patients with T2DM in the current sample could be attributed to dyslipidemia. However, some studies have reported that there is no association between dyslipidemia and VDD among patients with T2DM.^{31,33} The current study suggests that a younger age is more highly associated with VDD, which is consistent with other published research.³⁴ This finding could be explained by dietary behavior. A study conducted in Saudi Arabia found that healthy diet was adopted by older individuals and that the unhealthy diet was adopted by younger individuals.³⁶ Although this is statistically significant, it may not have any clinical relevance since the odds ratio was close to 1. However, other studies have reported that there is no significant association between VDD and age.^{14,18,30,31,33,35}

Our results showed that there was a marginal significance level ($P=0.054$) of the association between VDD and diabetes duration. This result is supported by a previous study which reported a significant association between vitamin D and diabetes duration.³⁷ Conversely,

Table 4 Logistic regression analysis between patient characteristics and glycemc control

Variable	Univariate analysis		Multivariate analysis	
	OR (CI 95%)	P	OR (CI 95%)	P
Vitamin D status Not deficient Deficient	 3.59 (2.05–6.31)	<0.001	 3.79 (2.01–7.14)	<0.001
Diabetes duration ≤10 year >10 year	 2.18 (1.24–3.83)	0.007	 0.93 (0.43–2.01)	0.859
DR Absent Present	 6.40 (2.81–14.56)	<0.001	 2.12 (1.097–4.11)	0.011
DN Absent Present	 4.53 (1.05–19.42)	0.043	 3.83 (0.79–18.48)	0.094
HTN Absent Present	 2.30 (1.33–4.00)	0.003	 1.58 (0.85–2.94)	0.151
Diabetes medication Oral Oral & insulin	 3.96 (2.20–7.15)	<0.001	 2.42 (1.20–4.90)	0.014
Education Educated Illiterate	 2.39 (1.33–4.30)	0.004	 2.12 (1.10–4.11)	0.025

Notes: P, P-value; P of <0.05 is the significance level. Significant P-values are shown in bold. The variables with odds ratios of 1 are the reference categories.

Abbreviations: VDD, vitamin D deficiency; DR, diabetic retinopathy; DN, diabetic neuropathy; HTN, hypertension.

other studies have found that diabetes duration was not associated with VDD.^{30,33} A possible explanation for our findings is that longer duration with diabetes is associated with diabetes complications,³⁸ which, in turn, is associated with VDD.¹⁸

The current study found that there is a significant positive association between DR and VDD in patients with T2DM. Similarly, some studies reported that serum 25-hydroxyvitamin D levels were significantly lower in participants with DR than in those without DR in patients with T2DM.^{18,21} Conversely, other studies have found that VDD was not associated with DR in patients with T2DM.^{19,20} The current study findings suggest that DN and DNP are not associated with VDD in patients with T2DM. This is consistent with other research studies, which found that DN^{19,21} and DNP^{18,21} were not associated with VDD. Conversely, some research studies

have suggested that VDD is significantly associated with DN¹⁸ and DNP.¹⁹

Good glycemc control is considered as one of the most important goals of T2DM management.²² The current study found that 25-hydroxyvitamin D levels were inversely correlated with glycemc control measured by HbA1c levels. This finding is consistent with a number of previous research studies.^{18,23,25} Additionally, the current study found that glycemc control is independently associated with VDD. Similarly, a cross-sectional study reported a significant positive association between VDD and poor glycemc control.³⁹ Conversely, a cross-sectional study found that vitamin D is not associated with HbA1c.¹⁴ The exact mechanism by which VDD may affect glycemc control is not fully understood; however, potential pathways have been suggested which involve pancreatic beta-cell dysfunction, reduced insulin sensitivity, and

inflammation.⁴⁰ These proposed mechanisms are important focuses for future studies.

Strengths and limitations

The strengths of the current study were that it was a population-based and the participants were selected randomly. There was an 18.3% non-response or excluded rate; however, this was mitigated when the sample size was calculated by accounting for 30% non-response rate. The limitations of the current study were that sun exposure and vitamin D dietary intake were not assessed in the current study; however, patients on a vitamin D supplement were excluded. Moreover, Jazan's population is homogeneous²⁷ and it was assumed that they follow a similar pattern.

Recommendations and conclusion

The current study found VDD to be highly prevalent among patients with T2DM in Jazan, which is a major health issue. It also successfully identified an association for VDD in T2DM with glycemic control. As such, a number of measures are recommended in order to improve diabetes care. For instance, primary prevention, health education, and promotional campaigns targeted at patients with T2DM should be implemented to encourage a healthier lifestyle and to promote weight reduction to reduce levels of obesity, especially in females as the current study shows that they have a higher rate of VDD. The importance of moderate sun exposure should also be emphasized and the use of appropriate clothing. Moreover, the majority of the products fortified with vitamin D in Saudi Arabia contain less than the recommended levels.⁴¹ Therefore, national policies are needed to support vitamin D fortification, as VDD is common not only in T2DM patients, but also in the general population in Saudi Arabia.¹⁰ In relation to the secondary prevention of VDD, health care providers should raise the suspicion of VDD in T2DM patients and give vitamin D supplements judiciously to those affected. Further observational and experimental research with an appropriate design are needed to prove the causality of VDD in association with diabetes microvascular complications and also glycemic control and to elucidate the pathogenesis of vitamin D in T2DM.

Acknowledgments

We would like to thank the study participants for their participation and cooperation and to acknowledge the effort of Jazan Diabetes Centre for providing technical support.

Disclosure

The authors report no conflicts of interest in this work.

References

1. World Health Organization. *Global Report on Diabetes*. Geneva: World Health Organization; 2016.
2. Punthakee Z, Goldenberg R, Katz P. Definition, classification and diagnosis of diabetes, prediabetes and metabolic syndrome. *Can J Diabetes*. 2018;42:S10–5. doi:10.1016/j.cejid.2017.10.003
3. American Diabetes Association. 2. Classification and diagnosis of diabetes: standards of medical care in diabetes—2018. *Diabetes Care*. 2018;41(Supplement 1):S13–27.
4. Zghebi SS, Steinke DT, Carr MJ, Rutter MK, Emsley RA, Ashcroft DM. Examining trends in type 2 diabetes incidence, prevalence and mortality in the UK between 2004 and 2014. *Diabetes Obes Metab*. 2017;19(11):1537–1545. doi:10.1111/dom.2017.19.issue-11
5. Meo SA. Prevalence and future prediction of type 2 diabetes Mellitus in the Kingdom of Saudi Arabia: a systematic review of published studies. *J Pak Med Assoc*. 2016;66(6):722–725.
6. Borel P, Caillaud D, Cano NJ. Vitamin D bioavailability: state of the art. *Crit Rev Food Sci Nutr*. 2015;55(9):1193–1205. doi:10.1080/10408398.2012.688897
7. Deluca HF. Overview of general physiologic features and functions of vitamin D. *Am J Clin Nutr*. 2004;80(6):1689S–96S.
8. Simsek Y, Kucukler FK, Arduc A, Guler S. Is there an association between vitamin D level and microvascular complications of type 2 diabetes mellitus? *West Indian Med J Open*. 2015;2(3):138–141.
9. Griz LH, Bandeira F, Gabbay MA, Dib SA, Carvalho EF. Vitamin D and diabetes mellitus: an update 2013. *Braz Arch Endocrinol Metab*. 2014;58(1):1–8.
10. Al-Alyani H, Al-Turki HA, Al-Essa ON, Alani FM, Sadat-Ali M. Vitamin D deficiency in Saudi Arabians: a reality or simply hype: a meta-analysis (2008–2015). *J Family Community Med*. 2018;25(1):1.
11. Papandreou D, Hamid Z-T-N. The role of vitamin D in diabetes and cardiovascular disease: an updated review of the literature. *Dis Markers*. 2015;2015:580474. doi:10.1155/2015/105358
12. Tahrani AA, Ball A, Shepherd L, Rahim A, Jones AF, Bates A. The prevalence of vitamin D abnormalities in South Asians with type 2 diabetes mellitus in the UK. *Int J Clin Pract*. 2010;64(3):351–355. doi:10.1111/ijcp.2010.64.issue-3
13. Alhumaidi M, Agha A, Dewish M. Vitamin D deficiency in patients with type-2 diabetes mellitus in Southern Region of Saudi Arabia. *Maedica*. 2013;8(3):231–236.
14. Sheth JJ, Shah A, Sheth FJ, et al. Does vitamin D play a significant role in type 2 diabetes? *BMC Endocr Disord*. 2015;15(1):5. doi:10.1186/s12902-015-0003-8
15. Ozder A, Eker HH, Bilginc M. Status of vitamin D among Turkish adults with type 2 diabetes mellitus in primary health care. *Acta Med Mediterr*. 2015;31:229–236.
16. Saedisomeolia A, Taheri E, Djalali M, Moghadam AM, Qorbani M. Association between serum level of vitamin D and lipid profiles in type 2 diabetic patients in Iran. *J Diabetes Metab Disord*. 2014;13(1):7. doi:10.1186/2251-6581-13-7
17. Alam MS, Kamrul-Hasan M, Kalam ST, Selim S, Akter F, Saifuddin M. Vitamin D status in newly diagnosed type 2 diabetes patients attending in a Tertiary Hospital of Bangladesh. *Mymensingh Med J*. 2018;27(2):362–368.
18. Ahmadi H, Azar ST, Lakkis N, Arabi A. Hypovitaminosis D in patients with type 2 diabetes mellitus: a relation to disease control and complications. *ISRN Endocrinol*. 2013;2013:641098.

19. Usluogullari CA, Balkan F, Caner S, et al. The relationship between microvascular complications and vitamin D deficiency in type 2 diabetes mellitus. *BMC Endocr Disord.* 2015;15(1):33. doi:10.1186/s12902-015-0029-y
20. Reddy GB, Sivaprasad M, Shalini T, et al. Plasma vitamin D status in patients with type 2 diabetes with and without retinopathy. *Nutrition.* 2015;31(7-8):959-963. doi:10.1016/j.nut.2015.01.012
21. Suzuki A, Kotake M, Ono Y, et al. Hypovitaminosis D in type 2 diabetes mellitus: association with microvascular complications and type of treatment. *Endocr J.* 2006;53(4):503-510. doi:10.1507/endocrj.K06-001
22. American Diabetes Association. 6. Glycemic targets: standards of medical care in diabetes—2018. *Diabetes Care.* 2018;41((Supplement 1)):S55-64.
23. Saif-Elnasr M, Ibrahim IM, Alkady MM. Role of vitamin D on glycemic control and oxidative stress in type 2 diabetes mellitus. *J Res Med Sci.* 2017;22(1):22. doi:10.4103/jrms.JRMS_976_16
24. Almetwazi MS, Noor AO, Almasri DM, et al. The association of vitamin D deficiency and glucose control among diabetic patients. *Saudi Pharm J.* 2017;25(8):1179-1183. doi:10.1016/j.jsps.2016.09.002
25. Aldossari K, Aljowair AM, Alqahtani NT, Al-Shiprain MS, Al-Shathri MM, Alshehri DA. Association between low vitamin D level and glycemic control. *Prim Care Diabetes.* 2017;11(Supplement 1):e5.
26. Mezza T, Muscogiuri G, Sorice GP, et al. Vitamin D deficiency: a new risk factor for type 2 diabetes. *Ann Nutr Metab.* 2012;61(4):337-348. doi:10.1159/000342771
27. Mahfouz MS, Rahim BE, Solan YM, Makeen AM, Alsanosy RM. Khat chewing habits in the population of the Jazan region, Saudi Arabia: prevalence and associated factors. *PLoS One.* 2015;10(8):e0134545.
28. Di Cesar DJ, Ploutz-Snyder R, Weinstock RS, Moses AM. Vitamin D deficiency is more common in type 2 than in type 1 diabetes. *Diabetes Care.* 2006;29(1):174. doi:10.2337/diacare.29.01.06.dc05-1876
29. Yu JR, Lee SA, Lee JG, et al. Serum vitamin D status and its relationship to metabolic parameters in patients with type 2 diabetes mellitus. *Chonnam Med J.* 2012;48(2):108-115. doi:10.4068/cmj.2012.48.2.108
30. Rolim MC, Santos BM, Conceição G, Rocha PN. Relationship between vitamin D status, glycemic control and cardiovascular risk factors in Brazilians with type 2 diabetes mellitus. *Diabetol Metab Syndr.* 2016;8(1):77. doi:10.1186/s13098-016-0188-7
31. Chen Y, Zhao CT, Zhen Z, Wong A, Tse HF, Yiu KH. Association of myocardial dysfunction with vitamin D deficiency in patients with type 2 diabetes mellitus. *J Diabetes Complications.* 2014;28(3):286-290. doi:10.1016/j.jdiacomp.2014.01.003
32. Sipahi S, Acikgoz SB, Genc AB, Yildirim M, Solak Y, Tamer A. The association of vitamin D status and vitamin D replacement therapy with glycemic control, serum uric acid levels, and microalbuminuria in patients with type 2 diabetes and chronic kidney disease. *Med Princ Pract.* 2017;26(2):146-151. doi:10.1159/000454952
33. Alcubierre N, Castelblanco E, Martínez-Alonso M, et al. Vitamin D deficiency is associated with poorer satisfaction with diabetes-related treatment and quality of life in patients with type 2 diabetes: a cross-sectional study. *Health Qual Life Outcomes.* 2018;16(1):44. doi:10.1186/s12955-018-0873-3
34. Zoppini G, Galletti A, Targher G, et al. Lower levels of 25-hydroxyvitamin D3 are associated with a higher prevalence of microvascular complications in patients with type 2 diabetes. *BMJ Open Diabetes Res Care.* 2015;3(1):e000058. doi:10.1136/bmjdr-2014-000058
35. Caretta N, de Kreutzenberg SV, Valente U, et al. Hypovitaminosis D is associated with erectile dysfunction in type 2 diabetes. *Endocrine.* 2016;53(3):831-838. doi:10.1007/s12020-015-0851-z
36. Moradi-Lakeh M, El Bcheraoui C, Afshin A, et al. Diet in Saudi Arabia: findings from a nationally representative survey. *Public Health Nutr.* 2017;20(6):1075-1081. doi:10.1017/S1368980017002567
37. Aksoy H, Akçay F, Kurtul N, Baykal O, Avci B. Serum 1,25 dihydroxy vitamin D (1,25(OH)2D3), 25 hydroxy vitamin D (25(OH)D) and parathormone levels in diabetic retinopathy. *Clin Biochem.* 2000;33(1):47-51. doi:10.1016/S0009-9120(99)00085-5
38. Nanayakkara N, Ranasinha S, Gadowski A, et al. Age, age at diagnosis and diabetes duration are all associated with vascular complications in type 2 diabetes. *J Diabetes Complications.* 2018;32(3):279-290. doi:10.1016/j.jdiacomp.2017.11.009
39. Iqbal K, Islam N, Mehboobali N, Asghar A, Iqbal MP. Association of vitamin D deficiency with poor glycaemic control in diabetic patients. *J Pak Med Assoc.* 2016;66(12):1562-1565.
40. Pittas AG, Lau J, Hu FB, Dawson-Hughes B. The role of vitamin D and calcium in type 2 diabetes. A systematic review and meta-analysis. *J Clin Endocrinol Metab.* 2007;92(6):2017-2029. doi:10.1210/jc.2007-0298
41. Sadat-Ali M, Al Elq A, Al-Farhan M, Sadat NA. Fortification with vitamin D: comparative study in the Saudi Arabian and US markets. *J Family Community Med.* 2013;20(1):49. doi:10.4103/2230-8229.108186

Diabetes, Metabolic Syndrome and Obesity: Targets and Therapy

Dovepress

Publish your work in this journal

Diabetes, Metabolic Syndrome and Obesity: Targets and Therapy is an international, peer-reviewed open-access journal committed to the rapid publication of the latest laboratory and clinical findings in the fields of diabetes, metabolic syndrome and obesity research. Original research, review, case reports, hypothesis formation, expert opinion

and commentaries are all considered for publication. The manuscript management system is completely online and includes a very quick and fair peer-review system, which is all easy to use. Visit <http://www.dovepress.com/testimonials.php> to read real quotes from published authors.

Submit your manuscript here: <https://www.dovepress.com/diabetes-metabolic-syndrome-and-obesity-targets-and-therapy-journal>