

Identification of candidate biomarkers correlated with the diagnosis and prognosis of cervical cancer via integrated bioinformatics analysis

This article was published in the following Dove Press journal:
OncoTargets and Therapy

Fangfang Dai^{1,2,*}
Gantao Chen^{3,*}
Yanqing Wang¹
Li Zhang¹
Youmei Long¹
Mengqin Yuan¹
Dongyong Yang¹
Shiyi Liu¹
Yanxiang Cheng¹
Liping Zhang²

¹Department of Obstetrics and Gynecology, Renmin Hospital of Wuhan University, Wuhan, Hubei 430060, People's Republic of China; ²Department of Obstetrics and Gynecology, Taihe Hospital, Hubei University of Medicine, Shiyan 442000, People's Republic of China; ³Department of Gastroenterology, Third People's Hospital of Xiantao in Hubei Province, Wuhan 430060, People's Republic of China

*These authors contributed equally to this work

Correspondence: Yanxiang Cheng
Department of Obstetrics and Gynecology, Renmin Hospital of Wuhan University, 99 Zhang Zhidong road, Wuhan, Hubei 430060, People's Republic of China
Tel +861 897 111 6435
Email doctornancy@qq.com

Liping Zhang
Department of Obstetrics and Gynecology, Taihe Hospital, Hubei University of Medicine, 30 Renmin South Road, Shiyan 442000, People's Republic of China
Email syzlp518@163.com

Background: Cervical carcinoma is one of the most common malignant gynecological tumors and is associated with high rates of morbidity and mortality. Early diagnosis and early treatment can reduce the mortality rate of cervical cancer. However, there is still no specific biomarkers for the diagnosis and detection of cervical cancer prognosis. Therefore, it is greatly urgent in searching biomarkers correlated with the diagnosis and prognosis of cervical cancer.

Results: The mRNA and microRNA expression profile datasets (GSE7803, GSE9750, GSE63514, and GSE30656) were downloaded from the Gene Expression Omnibus database (GEO). The three microarray datasets were integrated to one via integrated bioinformatics. Differentially expressed genes (DEGs) and microRNAs (DEMs) were obtained by R software. The protein-protein interaction (PPI) networks of the DEGs were performed from the STRING database and further visualized by Cytoscape software. A total of 83 DEGs and 14 DEMs were screened from the microarray expression profile datasets. The miRNAs validated to be associated with cervical cancer were obtained using HMDD online website and the target genes of DEMs were identified using the miWalk2.0 online database. *ESR1*, *PPP1R3C*, *NSG1*, and *TMPRSS11D* were the gene targets of hsa-miR-21; the targets of hsa-miR-16 were *GYS2*, *ENDOU*, and *KLF4*. These targets were all downregulated in cervical cancer. Finally, we verified the expression of those targets in cervical tissues from TCGA and GTEx databases and analyzed their relationship with survival of cervical cancer patients. In the end, the expression of key genes in cervical cancer tissues was verified via experiment method, we found *KLF4* and *ESR1* were downregulated in tumor tissues.

Conclusion: This study indicates that *KLF4* and *ESR1* are downregulated by the upregulated miR21 and miRNA16 in cervical cancer, respectively, using bioinformatics analysis, and the lower expression of *KLF4* and *ESR1* is closely related to the poor prognosis. They might be of clinical significance for the diagnosis and prognosis of cervical cancer, and provide effective targets for the treatment of cervical cancer.

Keywords: cervical cancer, integrated bioinformatics, differentially expressed genes, differentially expressed miRNAs, biomarkers

Introduction

Globally, cervical cancer is the fourth frequently occurring malignancy in women in the world, accounting for almost 12% of all female cancers. There are nearly 5,27,000 new cases and 2,65,000 deaths owing to cervical cancer annually. In fact, nearly 84% of cervical cancer cases occurred in developing countries, including China. Cervical

cancer is a high burden for China, in virtue of its large population with geographical and socioeconomic inequities.¹ At present, cervical cancer screening methods commonly used in clinical practice include Pap Smear, TCT, Hybrid Capture 2 (HC2) test, and colposcopy. The therapy of cervical cancer mainly includes surgical treatment, radiotherapy, and chemotherapy. These screening and treatment tests have greatly decreased the incidence and mortality rates for cervical cancer.² However, the 5-year survival rate is still low, especially for advanced patients, 5-year disease-free survival rate (DFS) is only 50%.³ More importantly, there is still no specific biomarkers for the diagnosis and detection of cervical cancer prognosis. Therefore, it is extremely urgent to study the potential molecular mechanisms of malignant biological behavior of cervical cancer, and find more reliable and prospective biomarkers for diagnosing and monitoring recurrence and evaluating prognosis.

As an important component of bioinformatics, gene expression profiling is a promising and powerful tool in medical oncology with great potential clinical applications: from molecular diagnosis to molecular screening of cancers, from new targets discovery to tumor response prediction, from patients classification to prognosis prediction.⁴ Today, it has been widely used to study molecular changes involved in tumor progression to better understand the development processes in human carcinogenesis, and discover new prognostic markers and new therapeutic targets in various types of cancer.⁵ At present, a large number of studies on the expression profile of cervical cancer have been carried out to identify the differentially expressed genes (DEGs) related to the development process or prognosis of cancer. However, owing to different data processing methods and different sample sizes, the results of DEGs are incompatible and even contradictory.^{6,7} Therefore, the results obtained by different raw data processing methods still have some limitations and insufficiency. Comprehensive bioinformatics methods have been applied to cancer research, and a large amount of valuable biological information has been discovered, making it possible to find effective and reliable molecular markers.⁸

In this study, we downloaded three original mRNA microarray datasets from the NCBI-Gene Expression Omnibus (GEO) database (<https://www.ncbi.nlm.nih.gov/geo/>), GSE7803,⁹ GSE9750,¹⁰ and GSE63514,¹¹ a total of 140 samples containing 58 normal cervical samples and 82 cervical cancer specimens. At the same time, a microRNA microarray, GSE30656,¹² was downloaded from the GEO

database, containing 10 normal cervical samples and 19 cervical cancer samples. The differentially expressed genes (DEGs) and differentially expressed miRNAs (DEMs) in normal tissues and tumor samples were obtained by R software. DEGs protein interaction was performed on the STRING online website. Subsequently, Cytoscape was applied for further visualization. The HMDD online website was effectively used to search for the miRNAs proved to be associated with cervical cancer. And miRNA target genes were obtained using miRWalk2.0 online database. Finally, we analyzed whether the expression of these target genes was consistent with the expression of cervical tissue from the TCGA and GTEx databases, and these targets were associated with patient prognosis. In the end, we verified that the expression of *KLF4* and *ESR1* was significantly lower in cervical cancer tissues by immunohistochemistry method. In this article, we identified that *KLF4* and *ESR1* may be the crucial genes in the cervical carcinogenesis and prognosis.

Materials and methods

Microarray data

Using the keywords “cervical cancer” to search on the GEO database (<https://www.ncbi.nlm.nih.gov/geo/>), the raw gene expression profiles of GSE7803, GSE9750, and GSE63514 were downloaded. The platform for GSE7803 is GPL96, [HG-U133A] Affymetrix Human Genome U133A Array, which contains 10 normal cervical samples and 21 cervical cancer specimens; The platform for GSE9750 is also GPL96, containing 24 normal cervical epithelial tissues and 33 cervical cancer tissues. The platform for GSE63514 is the GPL570 [HG-U133_Plus_2] Affymetrix Human Genome U133 Plus 2.0 Array, which consists of 24 normal cervical epithelial tissues and 28 cervical cancer tissues. The miRNA dataset GSE30656 was downloaded from GEO and its platform was GPL6955, Agilent-016436 Human miRNA Microarray 1.0 (Feature Number version), which included 10 normal cervical epithelial tissues and 19 cervical cancer tissues. The dataset information is shown in Table 1.

Screening for DEGs

The downloaded platform and series of matrix files were converted using the R language software and annotation package. The ID corresponding to the probe name was converted into an international standard name for genes

Table I Details for GEO cervical cancer data

Reference	Sample	GEO	Platform	Normal	Tumor
Zhai et al (2007)	Cervix	GSE7803	GPL96	10	21
Murty et al (2007)	Cervix	GSE9750	GPL96	24	33
Boon et al (2014)	Cervix	GSE63514	GPL570	24	28
Wilting et al (2012)	Cervix	GSE30656	GPL6955	10	19

Abbreviation: GEO, gene expression Omnibus.

(gene-symbol) and saved in a CSV file. z-SCORE is a commonly used standardization method that can normalize values to a matrix with a standard deviation of 1 and a mean of 0 for subsequent integration of multiple sets of data. After processing the original data through the RMA function and removing the background in the R/Bioconductor software, three gene expression profiles were normalized by the z-SCORE function and processed into one data set, which contained 58 normal cervical tissue samples and 82 tumor tissue samples. The differentially expressed genes (DEGs) and the differentially expressed miRNA (DEMs) were obtained and saved in CSV files by the limma package function. $|\log_2FC| \geq 1$ and adjust P -value < 0.05 were considered to indicate a significant difference.

PPI network

The STRING database (<http://www.bork.embl-heidelberg.de/STRING/>) is a computerized and powerful global resource for studying the interactions between the predicted and experimental interactions of proteins.¹³ In the present study, the DEGs expression products in cervical cancer were constructed using the STRING database to construct PPI networks, and a combined score of ≥ 0.4 was used as the cut-off value. After removed the isolated and partially connected nodes, a complex network of DEGs was constructed, the excel of string-interactions was downloaded and saved in a CSV file. String-interactions file and DEGs expression file were imported into cytoscape software for further processing.

Ascertain of miRNA target genes

The HMDD tool (<http://www.cuilab.cn/hmdd>) was performed to identify the validated miRNAs in cervical cancer, the ‘Calculate and draw custom Venn diagrams’ tool was applied to identify the DEMs within the list of validated miRNAs in cervical cancer. and miRWALK2.0

(<http://zmf.umm.uni-heidelberg.de/apps/zmf/mirwalk2/>) was used to predict the target genes of DEMs.

DEGs basic expression in normal and cancer tissues

The Cancer Genome Atlas (TCGA) is a collaboration between the National Cancer Institute (NCI) and the National Human Genome Research Institute (NHGRI) that has generated comprehensive, multi-dimensional maps of the key genomic changes in 33 types of cancer and corresponding normal tissues.¹⁴ GEPIA (<http://gepia.cancer-pku.cn/index.html>) is a new web-based tool that uses standardized, integrated processing to analyze tumor and normal gene expression from cancer genome mapping (TCGA) and genotype tissue expression (GTEx). It includes 319 cervical tissue samples (306 tumor samples and 13 normal tissue samples) from the TCGA database.¹⁵ We validated the expression of DEGs in these cervical tissue samples.

Survival analysis

OncoLnc database (www.oncolnc.org) contains survival data for 8,647 patients from 21 cancer studies from TCGA.⁶ The tool was used to conduct an overall survival analysis (OS) for patients with cervical cancer. The 5-year survival of patients with cervical cancer was analyzed by the HPA dataset (<https://www.proteinatlas.org/>). They allow the production of Kaplan–Meier plots stratified by gene expression levels. In the OncoLnc database, Log-rank P -values in survival analysis were recorded, 90th (upper) percentiles and 10th (lower) percentiles were considered as high and low groups.

Immunohistochemistry

Six paraffin-embedded human cervix normal and tumor tissues were cut into 5 μ m thick, 3 mm diameter sections to construct tissue microarrays, and then they were placed in 3% hydrogen peroxide solution to block endogenous peroxidase activity for 10 mins, immunohistochemical staining

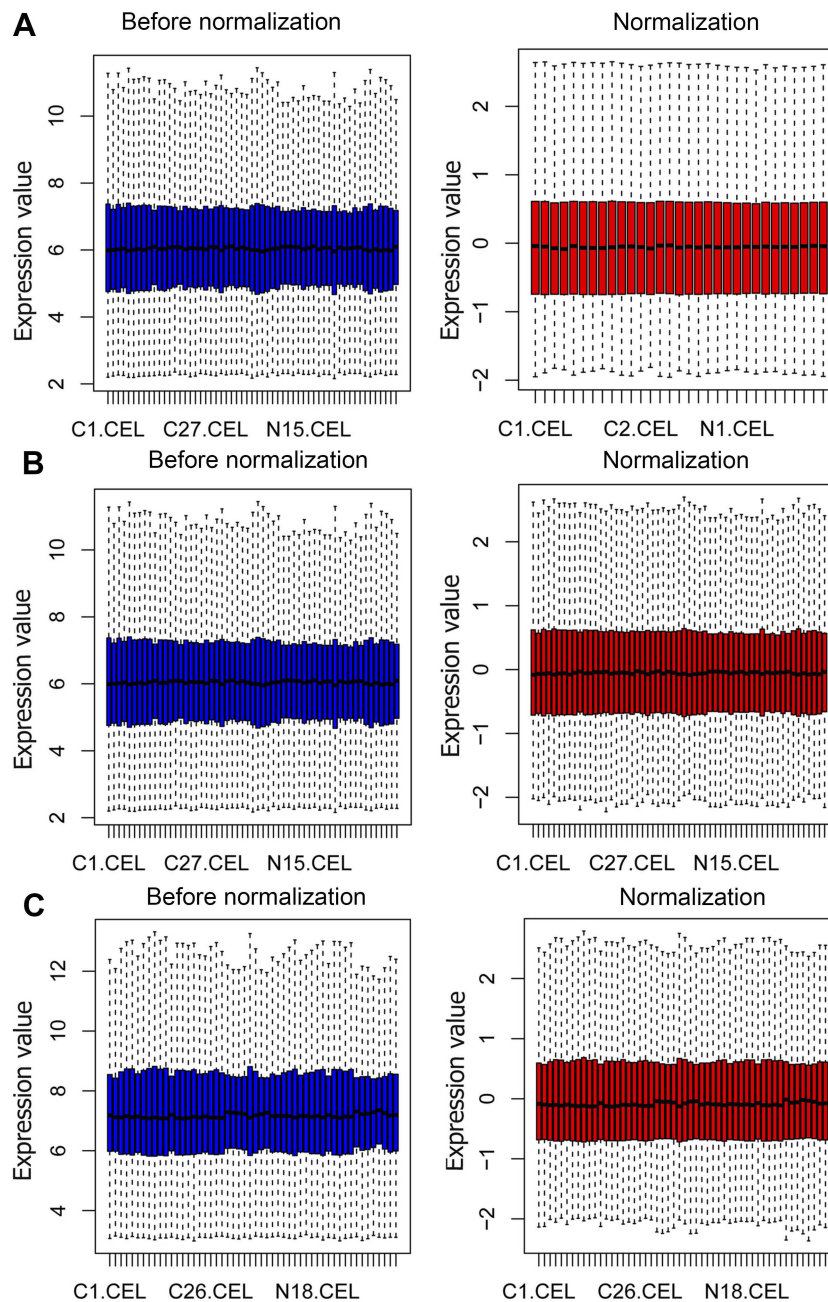


Figure 1 Normalization of gene expression. **(A)** The normalization of GSE7803 data, **(B)** The normalization of GSE9750 data, and **(C)** The normalization of GSE63514 data. The blue bar represents the data before normalization, and the red bar represents the normalized data.

was carried out using a rabbit polyclonal primary antibody to KLF4 (1:200; Mitaka, 11880-1-AP) and ESR1 (1:300; Mitaka, 21244-1-AP) for incubating at 4°C overnight. DAB solution was used for coloration, and hematoxylin was used for counterstaining. The final immunoreactive scores were evaluated independently by two pathologists blinded to the tissue parameters. The scores were determined by the sum of intensity and extent of the staining. The integrated optical density (IOD) represents the score of

intracellular ESR1 expression. The percentage of nuclear KLF4 staining of cervical tissue was grouped on a scale of <5%, 5–25%, 25–50%, and >50%.

Statistical analysis

GraphPad Prism5 was used for statistical analysis, independent samples *t*-test was used to analyze the correlation between *KLF4*, *ESR1* expression, and tissue parameters. $P \leq 0.05$ was considered as statistical significant.

Results

Identification of DEGs and DEMs in cervical cancer

The cervical cancer raw expression microarray datasets GSE7803, GSE9750, and GSE63514 were processed and normalized, and the results are shown in Figure 1. Three datasets were integrated into one, including 58 normal cervical samples and 82 cervical cancer specimens, which were screened by the limma package, 83 differentially expressed genes (DEGs) were obtained (Data are shown in Table 2). Total 12 upregulated genes and 71 downregulated genes were identified. Among them, *CDKN2A*, *SPPI*, *SYCP2*, *MMP12*, and *CXCL8* were upregulated genes, and *ESR1*, *PPP1R3C*, *NSG1*, *TMPRSS11D*, *GYS2*, *CDKN2A*, *ENDOU*, and *KLF4* were downregulated. The log FC of top 10 up and down-DEGs is shown in Table S1. Volcano plots of gene expression profile data in 140 cervical samples are shown in Figure 1SA. The cluster heatmaps of 83 DEGs in all samples are shown in Figure S2A. The miRNA dataset GSE30656 comprised 10 normal cervix tissue samples, and 19 squamous cell carcinoma or adenocarcinoma tissue samples, 14 differentially expressed miRNAs (DEMs) were obtained using the limma package, including 3 upregulated miRNAs and 11 downregulated miRNAs (Table 3). Volcano plot of miRNA expression profile data and heatmap of DEMs are shown in Figures S1B and S2B. The PPI network complex contains 52 nodes and 100 edges (Figure 2).

Validated miRNAs in cervical cancer

The HMDD tool was fully utilized for searching the validated cancer-related miRNAs, there are total 47 miRNAs which have been reported and validated in cervical cancer (Table 4). The ‘Calculate and draw custom Venn diagrams’ tool was used to identify the DEMs within the list of validated miRNAs, as shown in Figure 3, there are three identified DEMs within the validated miRNAs, including hsa-miR-21, hsa-miR-16, and hsa-miR-205. In the three DEMs, hsa-miR-21 and hsa-miR-16 are upregulated and hsa-miR-205 is downregulated.

miRNA-DEG pairs

MicroRNAs (miRNAs) are non-coding RNAs of approximately 20–25 nucleotides in length that recognize target mRNA by base pairing and up- or downregulate translation of target mRNA. The target genes of the validated DEMs in cervical cancer were performed by online databases miRWALK2.0. It was identified that three validated DEM targets were DEGs. *ESR1*, *PPP1R3C*, *NSG1*, and *TMPRSS11D* were the gene targets of hsa-miR-21 (Figure 4A); *GYS2*, *CDKN2A*, *ENDOU*, and *KLF4* were the targets of hsa-miR-16 (Figure 4B), while hsa-miR-205 targets were *DSG1*, *SPINK5*, and *IVL* (Figure 4C). Among them, *CDKN2A* was upregulated, while other target genes were downregulated in the DEGs; hsa-miR-21 and hsa-miR-16 were upregulated, while hsa-miR-205 was downregulated in the DEMs. In view of miRNAs negatively

Table 2 Screening DEGs in cervical cancer by integrated microarray

DEGs	Gene names					
Upregulated (12)	CDKN2A	SPPI	SYCP2	MMP12	CXCL8	MMP1
	ECT2	AIM2	TOP2A	DTL	RFC4	APOBEC3B
Downregulated (71)	LOR	SULT2B1	GLTP	CYP3A5	FGFBP1	EMPI
	S100A9	ZNF750	SERPINB1	SERPINB4	KLF4	SPRR2C
	TGM3	ID4	SOSTDC1	KRT6B	SERPINB2	CDA
	ZBED2	CFD	HSPB8	PRSS3	NSG1	TGMI
	PPL	IL18	CRABP2	ALOX12B	ACPP	CXCL14
	PI3	HOPX	GYS2	S100A12	IL1R2	AKR1B10
	GREB1	CRYAB	KLK12	KLK11	GPX3	TMPRSS11D
	KLK13	CWH43	SPRR1B	IVL	SPRR2B	ESR1
	EDN3	SLURPI	HPGD	SPRR1A	TMPRSS11E	CLIC3
	BBOX1	ENDOU	CLCA4	ALOX12	PPP1R3C	UPK1A
	RHCG	CRCT1	SPINK5	KRT4	SPRR3	DSG1
	KRT13	KRT1	MAL	CRISP3	CRNN	

Table 3 Screening DEMs in cervical cancer

DEMs	miRNA names		
Upregulated (3)	hsa-miR-21	hsa-miR-106b	hsa-miR-16
Downregulated (11)	hsa-miR-572	hsa-miR-149	hsa-miR-494
	hsa-miR-630	hsa-miR-638	hsa-miR-193b
	hsa-miR-575	hsa-miR-99a	hsa-miR-205
	hsa-miR-370	hsa-miR-203	

Abbreviation: DEMs, differentially expressed miRNAs.

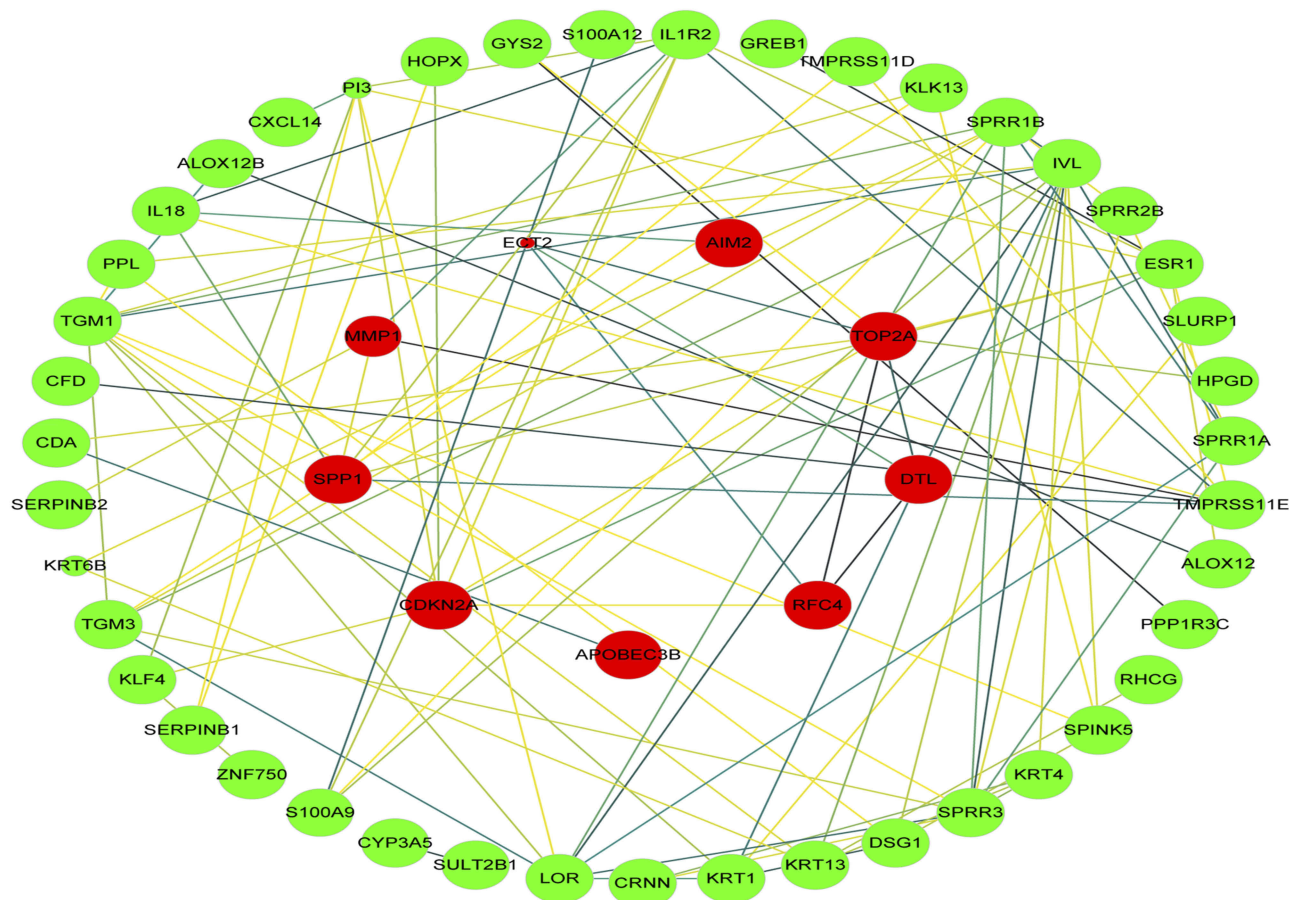


Figure 2 PPI network. Circles represent genes, lines represent the interaction of proteins between genes. Red indicates that the expression of genes is relatively upregulated, green indicates that the expression of genes is relatively downregulated. The size of the node represents the P-value. (The smaller the P-value, the larger the node). The line color represents the combined score of the interaction between the proteins (Brown represents stronger contact, and yellow means weaker contact). **Abbreviation:** PPI, protein-protein interaction.

Table 4 miRNAs which have been reported and validated in cervical cancer

MiRNAs which have been reported and validated in cervical cancer						
hsa-let-7a	hsa-miR-107	hsa-miR-10b	hsa-miR-124	hsa-miR-125b	hsa-miR-130a	hsa-miR-138
hsa-miR-143	hsa-miR-145	hsa-miR-146a	hsa-miR-146b	hsa-miR-150	hsa-miR-152	hsa-miR-155
hsa-miR-15b	hsa-miR-16	hsa-miR-195	hsa-miR-19a	hsa-miR-200a	hsa-miR-200b	hsa-miR-204
hsa-miR-205	hsa-miR-21	hsa-miR-210	hsa-miR-214	hsa-miR-215	hsa-miR-218	hsa-miR-218
hsa-miR-218-2	hsa-miR-27b	hsa-miR-29a	hsa-miR-29c	hsa-miR-31	hsa-miR-320	hsa-miR-328
hsa-miR-34a	hsa-miR-373	hsa-miR-376c	hsa-miR-425	hsa-miR-429	hsa-miR-483	hsa-miR-634
hsa-miR-644a	hsa-miR-744	hsa-miR-9	hsa-miR-93	hsa-miR-98		

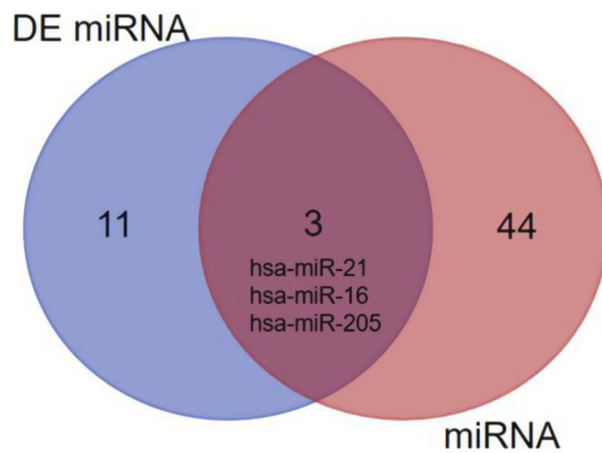


Figure 3 The identified DEMs within the list of validated miRNAs.

regulating the expression of their targets, we analyzed the correlation of upregulated genes with downregulated miRNAs, downregulated genes and upregulated miRNAs. Then, we made the visual networks of hsa-miR-21 (Figure 5A), hsa-miR-16 (Figure 5B), and their targets by cytoscape software.

DEGs expression state in normal and cervical cancer samples

GEPIA, an open-access website of the genome-wide expression in normal and cancer tissues from TCGA and GTEx, was used to identify the basic expression level of differentially expressed genes in 319 cervix uteri tissues. In the present study, we would like to validate whether the expression of miRNA target genes from the GEO database is consistent with their expression in these cervical tissues from TCGA and GTEx. As expected, *KLF4*, the target genes of hsa-miR-16 was significantly downregulated in cervical cancer samples, as were *ESR1* and *PPP1R3C*. However, the targets *ENDOU*, *GYS2* and *TMPRSS11D* had no statistical significance, and the gene *NSG1* cannot be detected, as shown in Figure 6. Therefore, we chose *KLF4*, *ESR1*, and *PPP1R3C* for subsequent research.

Survival analysis

In this study, the relationship between the expression of *KLF4*, *ESR1*, *PPP1R3C*, and the overall survival of patients

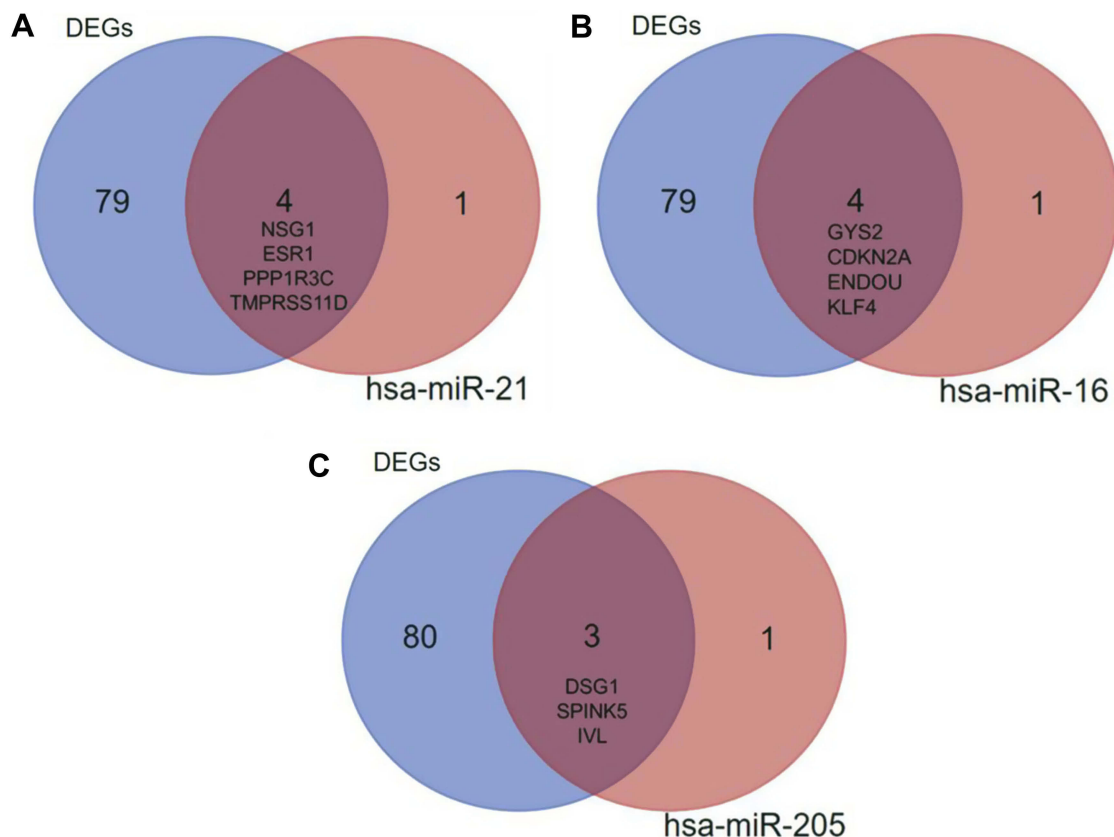


Figure 4 The target DEGs within the validated miRNAs. (A) hsa-miR-21; (B) hsa-miR-16; (C) hsa-miR-205. Blue represents the 83 identified DEGs, red represents the target genes of miRNA, and brown represents the intersection of them.

Abbreviation: DEGs, differentially expressed genes.

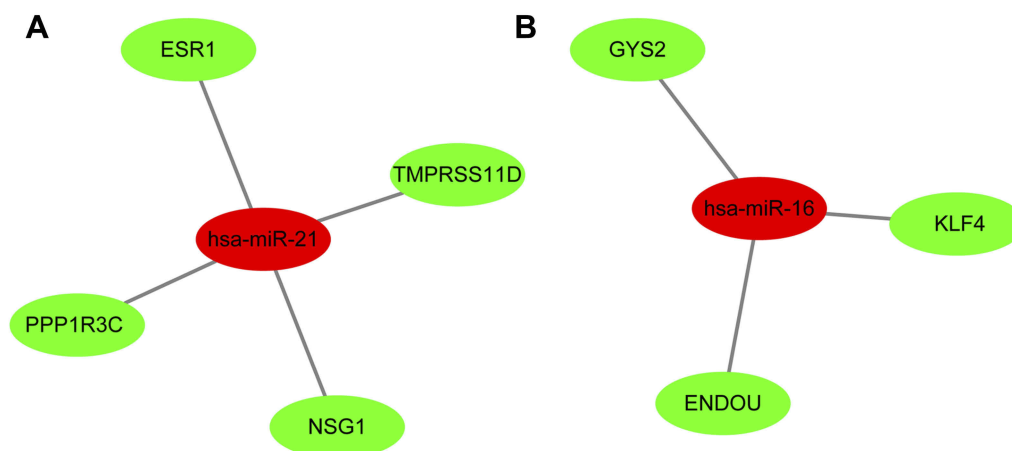


Figure 5 The networks of validated miRNAs and their target genes in cervical cancer. (A) hsa-miR-21; (B) hsa-miR-16. Red nodes represent upregulated miRNAs, while green nodes represent downregulated genes.

Abbreviation: DEGs, differentially expressed genes.

with cervical cancer was analyzed by OncoLnc tool. We found that the low mRNA expression of *KLF4* was associated with poor overall survival rate (log-rank $P=0.00966$; Figure 7A). However, there was no significant in *ESR1* and *PPP1R3C* (log-rank $P<0.05$; Figure 7C, Figure 7E). At the same time, the 5-year survival of patients with cervical cancer was analyzed by the HPA dataset; it was obvious that the low mRNA expression of *KLF4* and *ESR1* was associated with poor 5-year survival rate ($P<0.05$; Figure 7B and D). However, the high mRNA expression of *PPP1R3C* had a poor 5-year survival rate (Figure 7F). Overall, *KLF4* is closely related to overall survival, and *ESR1* is closely related to 5-year survival. *KLF4* and *ESR1* might be critical biomarkers for the prognosis of cervical cancer.

The expression of *KLF4* and *ESR1* in cervical tissues by immunohistochemistry

To further determine whether the two key genes obtained above were downregulated in cervical cancer, the protein expression in cervical tissues was detected by immunohistochemistry method. The results were consistent with those obtained by bioinformatics, the expression of *KLF4* and *ESR1* in cervical cancer tissues was significantly lower than that in normal cervical tissues ($P<0.05$; Figure 8).

Discussion

As one of the most common malignant gynecological tumors, cervical cancer is one of the leading causes of

cancer death in women. According to the latest statistics released in 2015, China ranks second in new cases of cervical cancer every year in the world.¹⁶ According to the statistics, 80% of patients have developed aggressive cancers at the time of diagnosis, and the age of diagnosis is slowly decreasing. In addition, cervical cancer still carries a high risk of morbidity and mortality on account of the metastasis and recurrence.¹⁷ Meanwhile, reliable and specific biomarkers for diagnosis and prognosis of cervical cancer are deficient and unexplored. Therefore, it is essential and urgent to search for biomarkers of diagnosis and novel treatment targets to predict the survival of cervical cancer. As an indispensable part of bioinformatics, gene expression microarrays have been extensively used to study cancer-related genes and provide broad prospects for drug-based molecular targeting, molecular prediction, and molecular therapy.¹⁸ A series of biomarkers have been presented potentially as the diagnosis and prognosis in cervical cancer and other cancers.^{19,20}

In the present study, three raw mRNA and one miRNA expression profile datasets were used to identify potential biomarkers in cervical cancer. The expression patterns obtained from the GEO database included 3 human cervical cancer raw mRNA profiles and 1 human cervical cancer miRNA expression dataset, all of which contained a comparison between cervical cancer and normal cervix tissue samples. After using R software and bioinformatics to integrate and deeply analyze these datasets, there are total of 83 DEGs and 14 DEMs that were identified.

MiRNA, a non-coding RNA of approximately 22 nucleotides in length, regulates expression of various oncogenes

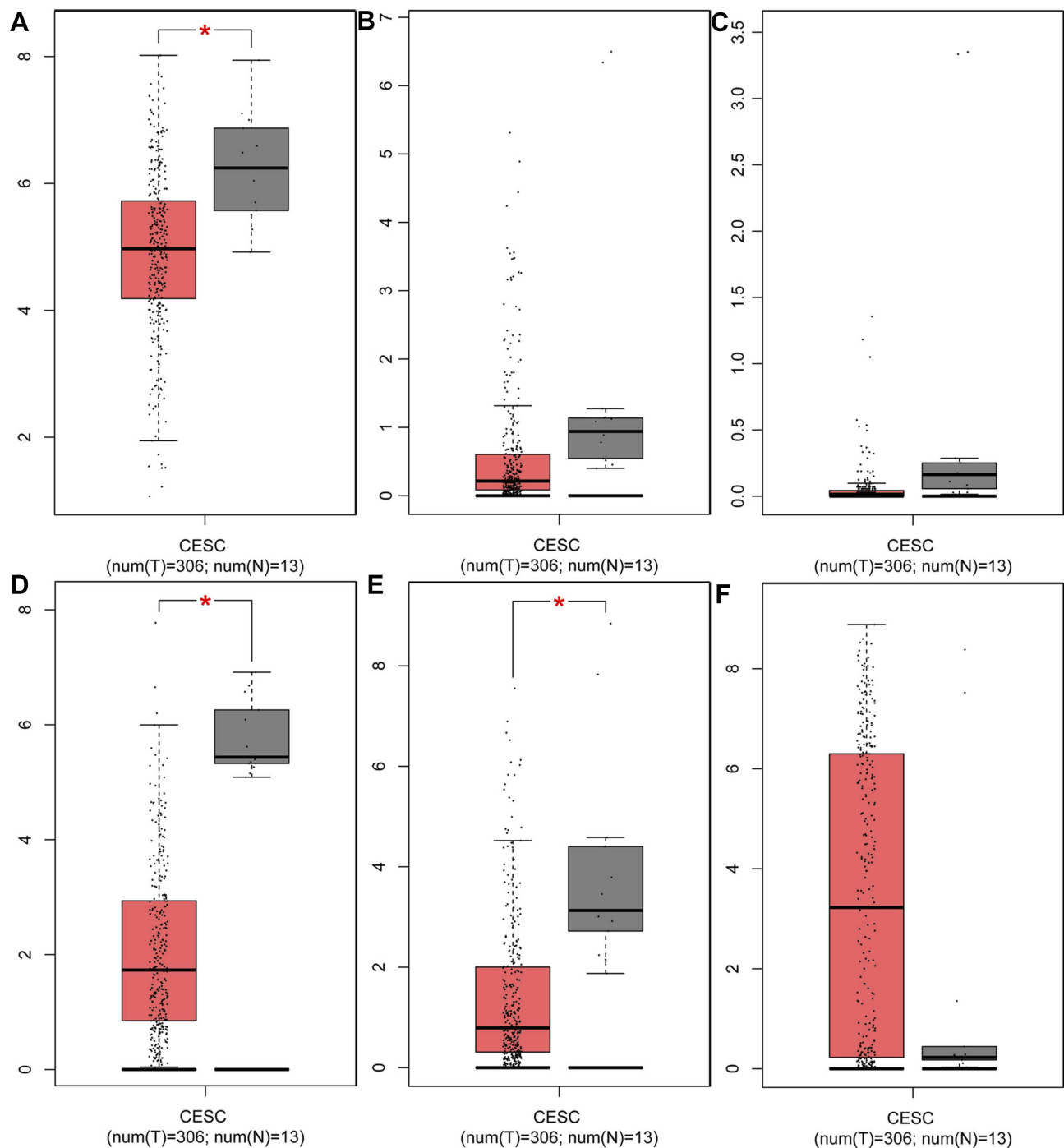


Figure 6 The expression of target genes in cervical tissues from TCGA data and GTEx data. The target genes of hsa-miR-16 (A) The expression of *KLF4*, (B) The expression of *ENDOU*, (C) The expression of *GYS2*; the target genes of hsa-miR-21 (D) The expression of *ESRI*, (E) The expression of *PPP1R3C*, (F) The expression of *TMPRSS11D*. Red represents tumor samples, while gray represents normal samples.

Abbreviations: *KLF4*, Kruppel like factor 4; *ENDOU*, Endonuclease; *GYS2*, Glycogen synthase 2; *ESRI*, Estrogen receptor I; *PPP1R3C*, Protein phosphatase I regulatory subunit 3C; *TMPRSS11D*, Transmembrane protease, serine 11D; CESC, Cervical squamous cell carcinoma and endocervical adenocarcinoma.

and tumor suppressor genes by targeting the 3'UTR of the target mRNA, resulting in degradation or inhibition of translation.²¹ In the study, we obtained the validated miRNAs by reference to existing studies using HMDD and identified target genes of the DEMs by miRWALK2.0. As

miRNAs negatively regulate the expression of their target genes, we identified that *ESRI*, *PPP1R3C*, *NSG1*, and *TMPRSS11D* were potentially the targets of miRNA-21, *KLF4*, *ENDOU*, and *GYS2* were the gene targets of miRNA -16. Among them, miRNA-21 and miRNA-16

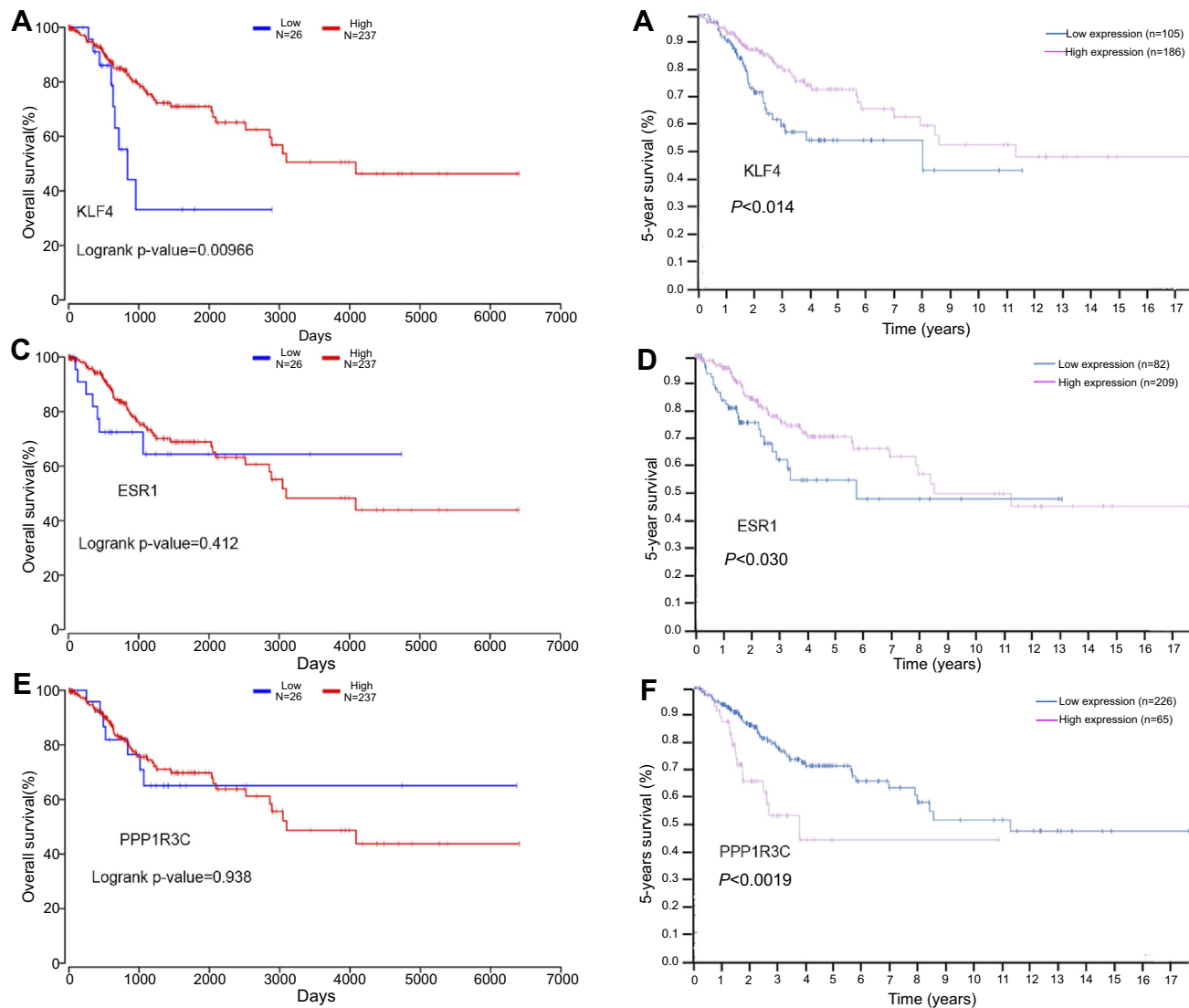


Figure 7 The prognostic value of three differentially expressed genes in cervical cancer patients. The overall survival rate (A) Prognostic value of *KLF4*, (C) Prognostic value of *ESR1*, (E) Prognostic value of *PPP1R3C*; the 5-year survival rate (B) Prognostic value of *KLF4*, (D) Prognostic value of *ESR1*, (F) Prognostic value of *PPP1R3C*. **Abbreviations:** *KLF4*, Kruppel like factor 4; *ESR1*, Estrogen receptor 1; *PPP1R3C*, Protein phosphatase 1 regulatory subunit 3C.

were upregulated, while the targets *ESR1*, *PPP1R3C*, *NSG1*, *KLF4*, *ENDOU*, and *GYS2* were downregulated.

To further study whether there is a difference in the expression of above genes in normal and tumor tissues, we analyzed their expression in 319 cervical tissue samples from the TCGA and GTEx databases, including 306 tumor samples and 13 normal tissue samples. As expected, the target gene *KLF4* was significantly downregulated in cervical cancer samples, as were *ESR1* and *PPP1R3C*. However, the expression of *ENDOU*, *GYS2*, *TMPRSS11D*, and *NSG1* is upregulated or missing in cancer tissues. Subsequently, further analysis was performed using the survival data from TCGA via OncoLnc and HPA website to identify the relationship between the postoperative survival of patients and

the expression of above three genes. It suggested that the low expression of *KLF4* was closely associated with poor overall survival and 5-year survival time of cervical cancer patients ($P < 0.05$), the low expression of *ESR1* and the high expression of *PPP1R3C* were closely associated with poor 5-year survival rate ($P < 0.05$). However, *ESR1* and *PPP1R3C* expressions were not significantly associated with OS ($P > 0.05$). Overall, *KLF4* and *ESR1* are closely related to overall survival and 5-year survival. They might be of great clinical significance for the prognosis of cervical cancer and provide effective targets for the treatment of cervical cancer.

Kruppel like factor 4 (*KLF4*) located at 9q31 is a critical DNA-binding transcription regulator.²² It is

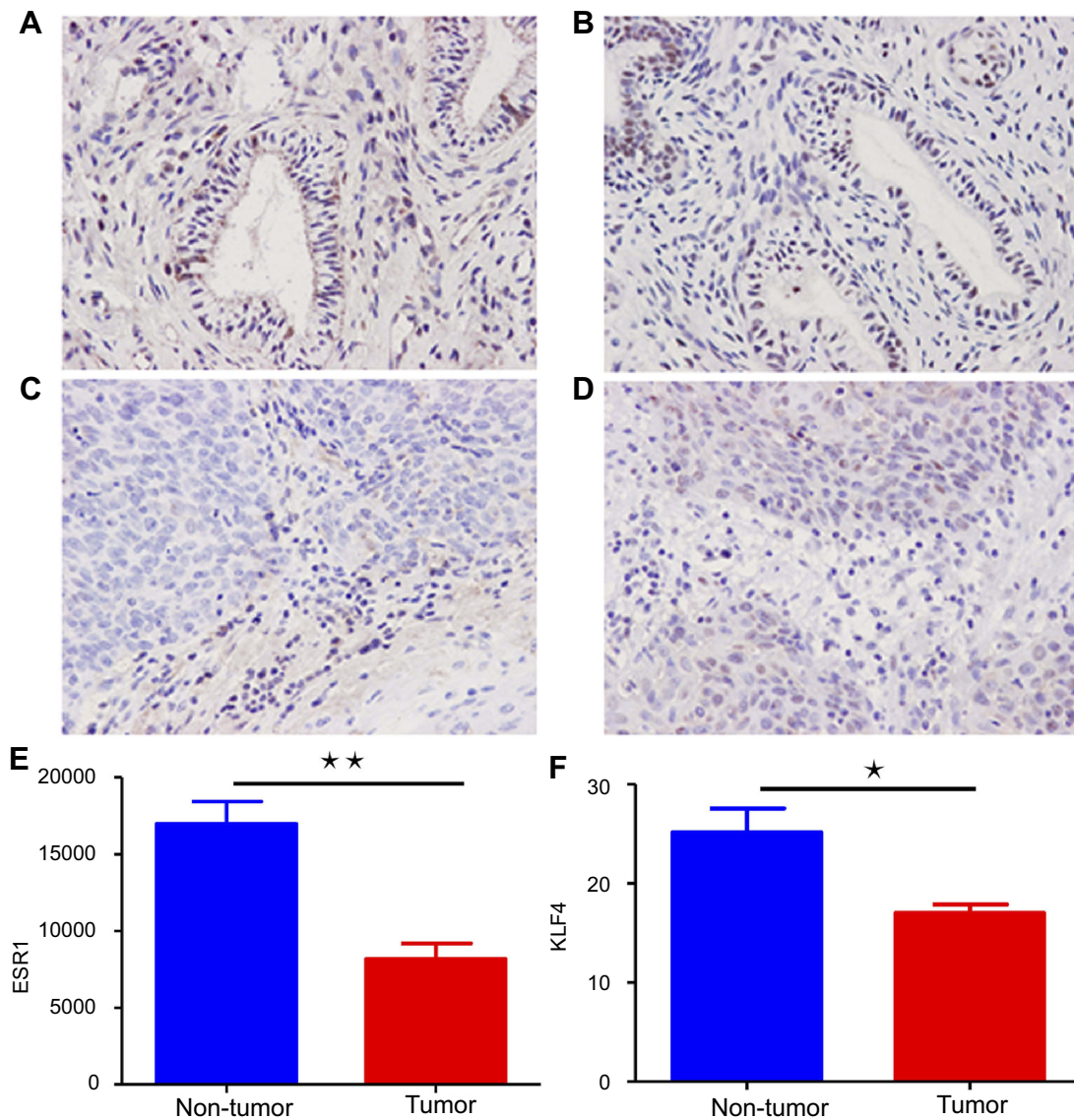


Figure 8 The immunohistochemical analysis of *ESR1* and *KLF4* in cervical cancer. (A, B) A normal cervical tissue showing high *ESR1* and *KLF4* expression. (C, D) A cervical cancer tissue showing low *ESR1* and *KLF4* expression. (E, F) Immunohistochemistry score results indicated that *ESR1* and *KLF4* staining scores were lower in tumor tissues than non-tumor tissues. Blue represents non-tumor tissues, while red represents tumor tissues.

Abbreviations: *KLF4*, Kruppel like factor 4; *ESR1*, Estrogen receptor 1.

highly expressed in the gastrointestinal tract and other epithelial tissues, and it has been reported to regulate cell proliferation, apoptosis, differentiation and the maintenance of telomerase activity.^{23,24} A number of studies have suggested that *KLF4* functions as a tumor suppressor in various cancers, such as human pancreatic cancer and colorectal cancer.^{25,26} Yang et al indicated that *KLF4* was downregulated in the development and progression of cervical carcinoma, and the overexpression of exogenous *KLF4* protein inhibited the cell growth and tumor formation by activating the cell cycle suppressor *p27*, which supports the hypothesis that *KLF4* is a tumor suppressor

in cervical carcinoma.²⁷ However, there is still no report on the relationship between *KLF4* and the prognosis of cervical cancer.

Estrogen receptor 1 (*ESR1*) is a receptor protein, which is usually enriched expression in breast, endometrium, and normal cervical tissue, which is necessary for sexual development and reproductive function, and performs an important role in cellular development and differentiation. *ESR1* protein is closely related to a variety of gynecological oncology diseases. It is well known that loss of *ESR1* in breast cancer patients indicates invasiveness and poor prognosis.²⁸ In ovarian carcinoma, *ESR1* methylation

influences ovarian cancer development, and its promoter methylation was negatively correlated with survival in the subgroup of low-grade ovarian carcinoma patients.²⁹ *ESR1* also plays a critical and diverse role in cervical cancer. Many previous studies indicated that *ESR1* was downregulated in cervical malignant cells and human papillomavirus (HPV) DNA positive cervical intraepithelial neoplasia tissues.^{30,31} On the other hand, *ESR1* plays a major role in mediating cervical cancer invasion and progression, and loss of it enhances cervical cancer invasion.³² However, the expression of *ESR1* in advanced cervical cancer and its impact on survival needs further study.

A variety of miRNAs have also been reported to downregulate *KLF4* and *ESR1* in various types of disease. In gastric cancer, *KLF4* was a direct target of miR-103; And in non-small cell lung cancer cells, miR-25 could enhance cell migration and invasion via ERK signaling pathway by inhibiting *KLF4*.^{33,34} Similarly, it has been reported that miR-301a-3p suppresses estrogen signaling by directly inhibiting *ESR1* in ER α positive breast cancer.³⁵ However, the relationship between miRNAs and *KLF4* and *ESR1* in cervical cancer is rarely reported.

miRNA-21 and miRNA-16 have been validated to be closely related to cervical cancer. The expression of miR-21 was upregulated by the HPV16 E7 oncoprotein in vivo, and the high expression of miR-21 in cervical cancer may play a possible role of oncogenes.^{36,37} miR-16-1 belongs to the miR-16 cluster and has been implicated in various aspects of carcinogenesis including cell proliferation and regulation of apoptosis. In human cervical cancer cells, miR-16-1 post-transcriptionally downregulates Cyclin E1 (*CCNE1*) gene expression to deregulate the cell cycle.³⁸ The above indicates that miRNA-21 and miRNA-16 might act as oncogenes to promote carcinogenesis in a variety of pathways. In this study, using comprehensive bioinformatics analysis methods, we found that miRNA16 and miRNA-21 might lead to the pathogenesis of cervical cancer by inhibiting the expression of *KLF4* and *ESR1* in cervical tissues, respectively, and cervical cancer patients with low expression of *KLF4* and *ESR1* may be associated with poor overall survival and 5-year survival prognosis. At the end, we found the expression of *KLF4* and *ESR1* protein was significantly lower in cervical cancer tissues via experiment method.

Conclusion

In summary, in this study, we find that *KLF4* and *ESR1* are downregulated by the upregulated miR21 and miRNA16 in

cervical cancer, respectively, and the lower expression of *KLF4* and *ESR1* is closely related to the poor prognosis. They might be critical biomarker for diagnosis and predicting cervical cancer progression. Our study has important clinical significance for better understanding the development and prognosis of cervical cancer. Of course, whether these genes can be used as the biomarkers for diagnosis and prognosis of cervical cancer needs further clinical study.

Acknowledgments

This work was supported by the Chinese Medical Association Clinical Research Special Fund Project (grant no 17020310700) and the Wuhan University Independent Research Project (grant no 413000117).

Disclosure

The authors report no conflicts of interest in this work.

References

- Di J, Rutherford S, Chu C. Review of the cervical cancer burden and population-based cervical cancer screening in China. *Asian Pac J Cancer Prev*. 2015;16(17):7401–7407. doi:10.7314/APJCP.2015.16.17.7401
- Kessler TA. Cervical cancer: prevention and early detection. *Semin Oncol Nurs*. 2017;33(2):172–183. doi:10.1016/j.soncn.2017.02.005
- Chopra S, Gupta M, Mathew A, et al. Locally advanced cervical cancer: a study of 5-year outcomes. *Indian J Cancer*. 2018;55(1):45–49. doi:10.4103/ijc.IJC_428_17
- Wadlow R, Ramaswamy S. DNA microarrays in clinical cancer research. *Curr Mol Med*. 2005;5(1):111–120.
- Nannini M, Pantaleo MA, Maleddu A, Astolfi A, Formica S, Biasco G. Gene expression profiling in colorectal cancer using microarray technologies: results and perspectives. *Cancer Treat Rev*. 2009;35(3):201–209. doi:10.1016/j.ctrv.2008.10.006
- Wang S, Chen X. Identification of potential biomarkers in cervical cancer with combined public mRNA and miRNA expression microarray data analysis. *Oncol Lett*. 2018;16(4):5200–5208. doi:10.3892/ol.2018.9323
- Ge Y, Zhang C, Xiao S, et al. Identification of differentially expressed genes in cervical cancer by bioinformatics analysis. *Oncol Lett*. 2018;16(2):2549–2558. doi:10.3892/ol.2018.8953
- Yang X, Zhu S, Li L, et al. Identification of differentially expressed genes and signaling pathways in ovarian cancer by integrated bioinformatics analysis. *Onco Targets Ther*. 2018;11:1457–1474. doi:10.2147/OTT.S152238
- Zhai Y, Quick R, Nan B, et al. Gene expression analysis of preinvasive and invasive cervical squamous cell carcinomas identifies HOXC10 as a key mediator of invasion. *Cancer Res*. 2007;67(21):10163–10172. doi:10.1158/0008-5472.CAN-07-2056
- Scotto L, Narayan G, Nandula SV, et al. Identification of copy number gain and overexpressed genes on chromosome arm 20q by an integrative genomic approach in cervical cancer: potential role in progression. *Genes Chromosomes Cancer*. 2008;47(9):755–765. doi:10.1002/gcc.20577
- Den Boon JA, Pyeon D, Wang SS, et al. Molecular transitions from papillomavirus infection to cervical precancer and cancer: role of stromal estrogen receptor signaling. *Proc Natl Acad Sci U S A*. 2015;112(25):E3255–E3264. doi:10.1073/pnas.1509322112

12. Wilting SM, Snijders PJ, Verlaat W, et al. Altered microRNA expression associated with chromosomal changes contributes to cervical carcinogenesis. *Oncogene*. 2013;32(1):106–116. doi:10.1038/ncr.2012.20
13. von Mering C, Huynen M, Jaeggi D, et al. STRING: a database of predicted functional associations between proteins. *Nucleic Acids Res*. 2003;31(1):258–261.
14. Ceccarelli M, Barthel FP, Malta TM, et al. Molecular profiling reveals biologically discrete subsets and pathways of progression in diffuse glioma. *Cell*. 2016;164(3):550–563. doi:10.1016/j.cell.2015.12.028
15. Tang Z, Li C, Kang B, Gao G, Li C, Zhang Z. GEPIA: a web server for cancer and normal gene expression profiling and interactive analyses. *Nucleic Acids Res*. 2017;45(W1):W98–W102. doi:10.1093/nar/gkx247
16. Torre LA, Bray F, Siegel RL, Ferlay J, Lortet-Tieulent J, Jemal A. Global cancer statistics, 2012. *CA Cancer J Clin*. 2015;65(2):87–108. doi:10.3322/caac.21262
17. Wang IT, Chou SC, Lin YC. Zoledronic acid induces apoptosis and autophagy in cervical cancer cells. *Tumour Biol*. 2014;35(12):11913–11920. doi:10.1007/s13277-014-2460-5
18. Petryszak R, Burdett T, Fiorelli B, et al. Expression atlas update—a database of gene and transcript expression from microarray- and sequencing-based functional genomics experiments. *Nucleic Acids Res*. 2014;42(Databaseissue):D926–D932. doi:10.1093/nar/gkt1270
19. Ni M, Liu X, Wu J, et al. Identification of candidate biomarkers correlated with the pathogenesis and prognosis of non-small cell lung cancer via integrated bioinformatics analysis. *Front Genet*. 2018;9:469. doi:10.3389/fgene.2018.00173
20. Zhang GM, Goyal H, Song LL. Bioinformatics analysis of differentially expressed miRNA-related mRNAs and their prognostic value in breast carcinoma. *Oncol Rep*. 2018;39(6):2865–2872. doi:10.3892/or.2018.6393
21. Bartel DP. MicroRNAs: genomics, biogenesis, mechanism, and function. *Cell*. 2004;116(2):281–297.
22. Marrero-Rodriguez D, la Cruz HA, Taniguchi-Ponciano K, et al. Kruppel like factors family expression in cervical cancer cells. *Arch Med Res*. 2017;48(4):314–322. doi:10.1016/j.arcmed.2017.06.011
23. Takahashi K, Yamanaka S. Induction of pluripotent stem cells from mouse embryonic and adult fibroblast cultures by defined factors. *Cell*. 2006;126(4):663–676. doi:10.1016/j.cell.2006.07.024
24. Foster KW, Liu Z, Nail CD, et al. Induction of KLF4 in basal keratinocytes blocks the proliferation-differentiation switch and initiates squamous epithelial dysplasia. *Oncogene*. 2005;24(9):1491–1500. doi:10.1038/sj.onc.1208307
25. Wei D, Kanai M, Jia Z, Le X, Xie K. Kruppel-like factor 4 induces p27Kip1 expression in and suppresses the growth and metastasis of human pancreatic cancer cells. *Cancer Res*. 2008;68(12):4631–4639. doi:10.1158/0008-5472.CAN-07-5953
26. Zhao W, Hisamuddin IM, Nandan MO, Babbitt BA, Lamb NE, Yang VW. Identification of Kruppel-like factor 4 as a potential tumor suppressor gene in colorectal cancer. *Oncogene*. 2004;23(2):395–402. doi:10.1038/sj.onc.1207067
27. Yang WT, Zheng PS. Kruppel-like factor 4 functions as a tumor suppressor in cervical carcinoma. *Cancer*. 2012;118(15):3691–3702. doi:10.1002/ncr.26698
28. Li X, Yang J, Peng L, et al. Triple-negative breast cancer has worse overall survival and cause-specific survival than non-triple-negative breast cancer. *Breast Cancer Res Treat*. 2017;161(2):279–287. doi:10.1007/s10549-016-4059-6
29. Kirm V, Shi R, Heublein S, et al. Estrogen receptor promoter methylation predicts survival in low-grade ovarian carcinoma patients. *J Cancer Res Clin Oncol*. 2014;140(10):1681–1687. doi:10.1007/s00432-014-1729-9
30. Coelho FR, Prado JC, Pereira Sobrinho JS, et al. Estrogen and progesterone receptors in human papilloma virus-related cervical neoplasia. *Braz J Med Biol Res*. 2004;37(1):83–88.
31. Lopez-Romero R, Garrido-Guerrero E, Rangel-Lopez A, et al. The cervical malignant cells display a down regulation of ER-alpha but retain the ER-beta expression. *Int J Clin Exp Pathol*. 2013;6(8):1594–1602.
32. Zhai Y, Bommer GT, Feng Y, Wiese AB, Fearon ER, Cho KR. Loss of estrogen receptor 1 enhances cervical cancer invasion. *Am J Pathol*. 2010;177(2):884–895. doi:10.2353/ajpath.2010.091166
33. Zheng J, Liu Y, Qiao Y, Zhang L, Lu S. miR-103 promotes proliferation and metastasis by targeting KLF4 in gastric cancer. *Int J Mol Sci*. 2017;18(5):910. doi:10.3390/ijms18050910
34. Ding X, Zhong T, Jiang L, Huang J, Xia Y, Hu R. miR-25 enhances cell migration and invasion in non-small-cell lung cancer cells via ERK signaling pathway by inhibiting KLF4. *Mol Med Rep*. 2018;17(5):7005–7016. doi:10.3892/mmr.2018.8772
35. Lettlova S, Brynychova V, Blecha J, et al. MiR-301a-3p suppresses estrogen signaling by directly inhibiting ESR1 in ERalpha positive breast cancer. *Cell Physiol Biochem*. 2018;46(6):2601–2615. doi:10.1159/000489687
36. Liu L, Wang YL, Wang JF. [Differential expression of miR-21, miR-126, miR-143, miR-373 in normal cervical tissue, cervical cancer tissue and Hela cell]. *Sichuan Da Xue Xue Bao Yi Xue Ban*. 2012;43(4):536–539.
37. Gomez-Gomez Y, Organista-Nava J, Ocadiz-Delgado R, et al. The expression of miR-21 and miR-143 is deregulated by the HPV16 E7 oncoprotein and 17beta-estradiol. *Int J Oncol*. 2016;49(2):549–558. doi:10.3892/ijo.2016.3575
38. Zubillaga-Guerrero MI, Alarcon-Romero Ldel C, Illades-Aguilar B, et al. MicroRNA miR-16-1 regulates CCNE1 (cyclin E1) gene expression in human cervical cancer cells. *Int J Clin Exp Med*. 2015;8(9):15999–16006.

Supplementary materials

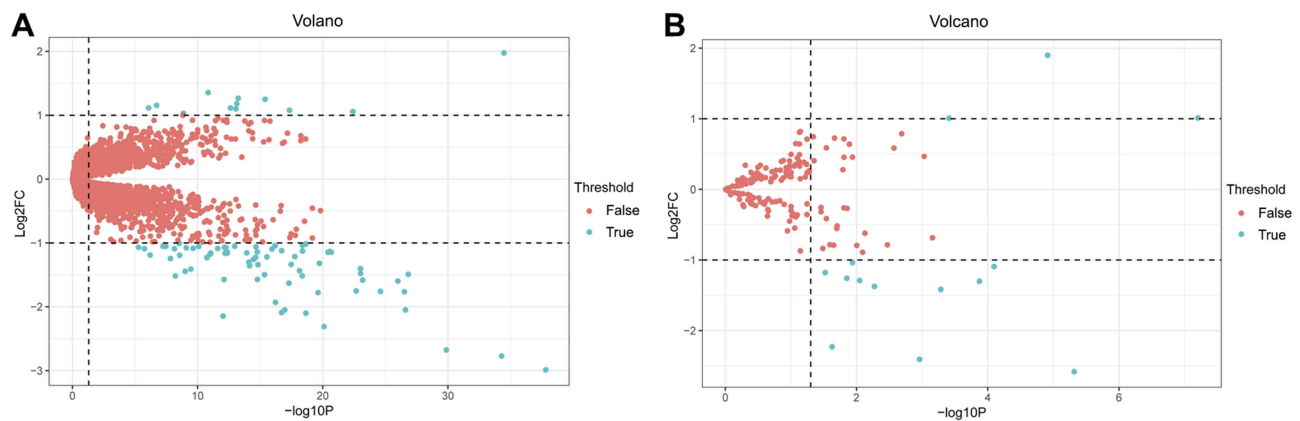


Figure S1 Volcanic maps of DEGs and DEMs. **(A)** mRNA data after three cervical cancer gene expression microarray datasets were integrated, **(B)** GSE30656 data. The green points represent significant different genes or miRNAs screened on the basis of $|\text{fold change}| > 1.0$ and a corrected P -value of < 0.05 . The red points represent genes with no significant difference. FC is the fold change.

Abbreviations: DEGs, differentially expressed genes; DEMs, differentially expressed miRNAs.

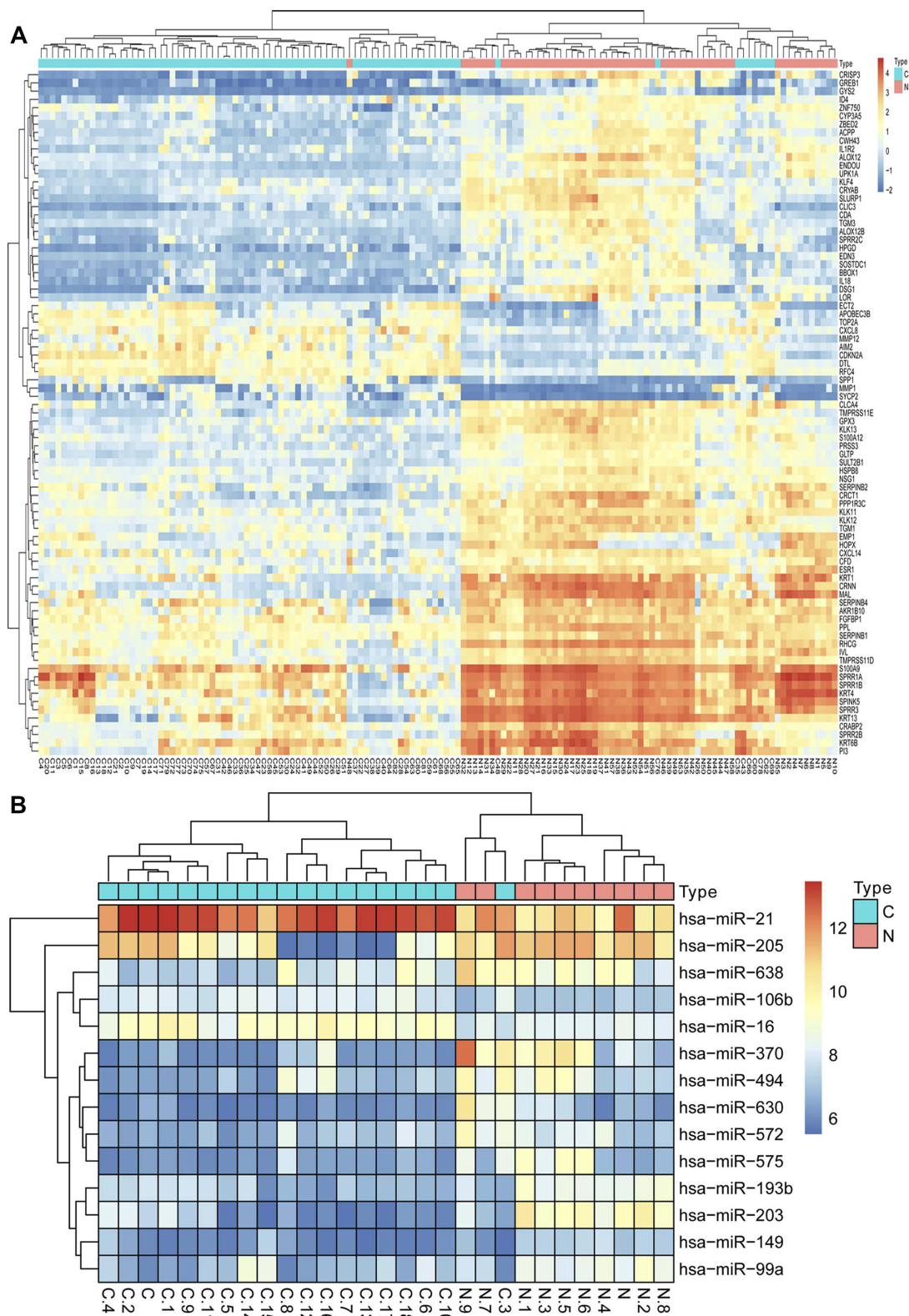


Figure S2 Hierarchical clustering heatmap of DEGs and DEMs screened on the basis of $|\text{fold change}| > 1.0$ and a corrected P -value < 0.05 . **(A)** The data after three cervical cancer gene expression microarray datasets were integrated; **(B)** GSE30656 data. Red indicates that the expression of genes is relatively upregulated, blue indicates that the expression of genes is relatively downregulated.

Abbreviations: DEGs, differentially expressed genes; DEMs, differentially expressed miRNAs.

Table S1 The log FC and P.Value of top 10 up and down-DEGs

Genes	Official full name	Log FC	P-value
Upregulated			
<i>CDKN2A</i>	Cyclin dependent kinase inhibitor 2A	1.975412633	5.31E-39
<i>SPP1</i>	Secreted phosphoprotein 1	1.354063506	1.82E-13
<i>SYCP2</i>	Synaptonemal complex protein 2	1.265154917	4.27E-16
<i>MMP12</i>	Matrix metalloproteinase 12	1.248880396	1.85E-18
<i>CXCL8</i>	C-X-C motif chemokine ligand 8	1.181026013	5.60E-16
Downregulated			
<i>KRT13</i>	Keratin 13	-2.146391633	9.14E-15
<i>KRT1</i>	Keratin 1	-2.310120444	1.14E-23
<i>MAL</i>	Mal, T-cell differentiation protein	-2.677048339	4.26E-34
<i>CRISP3</i>	Cysteine rich secretory protein 3	-2.771740965	1.23E-38
<i>CRNN</i>	Cornulin	-2.987899149	1.23E-42

OncoTargets and Therapy

Dovepress

Publish your work in this journal

OncoTargets and Therapy is an international, peer-reviewed, open access journal focusing on the pathological basis of all cancers, potential targets for therapy and treatment protocols employed to improve the management of cancer patients. The journal also focuses on the impact of management programs and new therapeutic

agents and protocols on patient perspectives such as quality of life, adherence and satisfaction. The manuscript management system is completely online and includes a very quick and fair peer-review system, which is all easy to use. Visit <http://www.dovepress.com/testimonials.php> to read real quotes from published authors.

Submit your manuscript here: <https://www.dovepress.com/oncotargets-and-therapy-journal>