

# Retrospective analysis of sorafenib efficacy and safety in Chinese patients with high recurrence rate of post-hepatic carcinectomy

This article was published in the following Dove Press journal:  
*OncoTargets and Therapy*

Desheng Wang,<sup>1,\*</sup> Weridong Jia,<sup>2,\*</sup> Zhiming Wang,<sup>3</sup> Tianfu Wen,<sup>4</sup> Wei Ding,<sup>5</sup> Feng Xia,<sup>6</sup> Ling Zhang,<sup>7</sup> Feixiang Wu,<sup>8</sup> Tao Peng,<sup>9</sup> Bin Liu,<sup>10</sup> Cuncai Zhou,<sup>11</sup> Qichang Zheng,<sup>12</sup> Xiongying Miao,<sup>13</sup> Junping Peng,<sup>14</sup> Zhiyong Huang,<sup>15</sup> Kefeng Dou<sup>1</sup>

<sup>1</sup>Department of Hepatobiliary Surgery, Xijing Hospital, Shaanxi, China; <sup>2</sup>Department of Hepatobiliary Surgery, Anhui Provincial Hospital, Hefei, China; <sup>3</sup>Department of Hepatobiliary Surgery, Xiangya Hospital, Changsha, China; <sup>4</sup>Department of Hepatobiliary Surgery, West China Hospital, Chengdu, China; <sup>5</sup>Department of Hepatobiliary Surgery, Cancer Hospital of Xinjiang, Urumqi, China; <sup>6</sup>Department of Hepatobiliary Surgery, Southwest Hospital, Chongqing, China; <sup>7</sup>Department of Hepatobiliary Surgery, Cancer Hospital of Henan, Zhengzhou, China; <sup>8</sup>Department of Hepatobiliary Surgery, Cancer Hospital of Guangxi Medical University, Nanning, China; <sup>9</sup>Department of Hepatobiliary Surgery, The First Affiliated Hospital of Guangxi Medical University, Nanning, China; <sup>10</sup>Department of Hepatobiliary Surgery, The First Affiliated Hospital of Kunming Medical University, Kunming, China; <sup>11</sup>Department of Hepatobiliary Surgery, Cancer Hospital of Jiangxi, Nanchang, China; <sup>12</sup>Department of Hepatobiliary Surgery, Wuhan Union Hospital, Wuhan, China; <sup>13</sup>Department of Hepatobiliary Surgery, The Second Affiliated Hospital of Xiangya, Changsha, China; <sup>14</sup>Department of Hepatopancreatobiliary Surgery, Cancer Hospital of Sichuan, Chengdu, China; <sup>15</sup>Department of Hepatobiliary Surgery, Wuhan Tongji Hospital, Wuhan, China

\*These authors contributed equally to this work

Correspondence: Kefeng Dou  
Department of Hepatobiliary Surgery, Xijing Hospital, The Fourth Military Medical University, Changle West Road, NO.127, Xi'an, Shaanxi, China  
Tel +861 357 189 0758  
Fax +86 298 477 5255  
Email gdwkgyx@fmmu.edu.cn

**Background:** There is no guideline recommendation for preventing hepatocellular carcinoma (HCC) recurrence after hepatic resection. Moreover, an unmet need exists on the effectiveness of sorafenib therapy in recurrent HCC.

**Purpose:** We therefore assessed the efficacy and safety of sorafenib in Chinese HCC patients with high risk of recurrence.

**Patients and methods:** Data were collected retrospectively from 15 Chinese research centers from January 1, 2012 to November 15, 2013, by chart reviews of patients with moderate-advanced HCC who received hepatic carcinectomy. The primary end point was recurrence-free survival rate at 1 year in patients with a high recurrence risk. Secondary end points included 1-year survival rate, time to recurrence and safety assessment.

**Results:** A total of 209 high-risk patients (sorafenib, n=98; control, n=111) who underwent carcinectomy were analyzed. There was no significant difference in the proportion of patients with recurrence-free survival at 1 year between the sorafenib and control (70.43% vs 68.90%;  $\chi^2=0.007$ ,  $P=0.934$ ). One-year survival rate was significantly higher with sorafenib than observed with control (95.5% vs 83.35%;  $\chi^2=7.441$ ,  $P=0.006$ ). Time to recurrence between sorafenib and control groups was similar. Incidences of all the adverse events (AEs) were similar in both the groups and transaminase elevation was most common in both groups (20.37% vs 24.79%). Thrombocytopenia incidence was significantly lower with the sorafenib group than with control (1.85% vs 9.40%;  $P=0.015$ ).

**Conclusion:** Sorafenib may be considered as a feasible option in the treatment of HCC recurrence.

**Keywords:** hepatocellular carcinoma, recurrence, sorafenib, survival, carcinectomy, Chinese

## Introduction

Hepatic resection/carcinectomy is the preferred curative option among the multiple treatment modalities available for hepatocellular carcinoma (HCC).<sup>1,2</sup> However, HCC recurrence remains the main detrimental factor in patients receiving hepatic resection, with a frequency as high as 70%–100%.<sup>3</sup> In general, HCC recurs soon after or within 1 to 2 years after hepatic resection and liver transplantation and is associated with a dismal outcome and compromised long-term survival.<sup>4–6</sup> Prevention, early detection of recurrence, and surgical management could further improve the survival rates.

The tyrosine kinase inhibitor, sorafenib (Nexavar<sup>®</sup>; Bayer HealthCare, Wayne, NJ, USA), inhibits tumors angiogenesis through inhibition of vascular endothelial growth

factor (VEGF) and platelet-derived growth factor (PDGF) signaling pathways, has demonstrated a significant prolongation in survival of patients with advanced-stage HCC.<sup>3,7</sup> Being the only FDA-approved systemic chemotherapeutic agent, it is regarded as the gold standard in treating patients with advanced HCC.<sup>8</sup> Lenvatinib has reported a promising clinical outcome with a median survival time of 13.6 months vs 12.3 months in sorafenib.<sup>9</sup> Currently, the approval of lenvatinib as first-line therapy in unresectable hepatocellular carcinoma (HCC) is under FDA review.<sup>10</sup> Regorafenib is the other multikinase inhibitor approved for the second line of therapy in advanced HCC. Treatment with sorafenib alone or in combination with mammalian target of rapamycin (mTOR) inhibitors has shown promising results in HCC recurrence.<sup>10–14</sup> Available evidence from multiple studies showed that administration of sorafenib to patients with recurring HCC demonstrated better results compared with the control treatments. In a retrospective study by Saab et al<sup>15</sup> recurrence rates of 12.5% were reported in patients who received adjuvant sorafenib therapy compared with 50% reported by the control population. However, the study did not provide important evidence regarding sorafenib efficacy in reducing the incidence of HCC recurrence and increasing the disease-free survival and overall survival for high-risk liver transplant recipients, hence further studies were warranted. A pilot study concluded sorafenib adjuvant therapy to be effective in reducing the risk of post-operative HCC relapse. A significantly higher time to recurrence was observed in the sorafenib group than the control group ( $P=0.006$ ). In addition, median recurrence-free survival in the sorafenib arm was prolonged by 8 months compared with the control group ( $P=0.006$ ), with a recurrence rate significantly lesser in the sorafenib group ( $P=0.032$ ).<sup>16</sup> On the contrary, few studies have suggested limited effect of sorafenib treatment in HCC recurrence.<sup>11,17</sup> A phase 3, double-blind, placebo-controlled study (STORM) of 1114 patients demonstrated no difference in median recurrence-free survival between the sorafenib group (33.3 months) and the placebo group (33.7 months;  $P=0.26$ ) and concluded sorafenib adjuvant therapy to be ineffective in HCC following radical resection or ablation.<sup>18</sup>

On the contrary, many studies also indicate that efficacy of sorafenib treatment in recurrent HCC has not been sufficiently robust to inspire clinical use because of the observational study designs and limited sample sizes.<sup>19–21</sup> Therefore, there is a lack of clarity on the effectiveness of sorafenib therapy in HCC recurrence. In addition, there is no universally accepted adjuvant therapy or consensus on the most apt treatment for preventing or treating HCC recurrence post hepatic resection.<sup>21,22</sup> A recognized

standard treatment for recurrence prevention in patients with a high recurrence risk after HCC excision remains to be elucidated. As a consequence, the prognosis for these patients is poor.<sup>23</sup> Considering the scarce, inconsistent data, it is important to further explore the effectual benefit of sorafenib in treatment of HCC patients with recurrence.<sup>10</sup> We therefore conducted this retrospective study to assess the efficacy and safety of sorafenib treatment in Chinese HCC patients with a high risk of recurrence.

## Materials and methods

### Study design and patients

We retrospectively reviewed data of patients with intermediate to advanced HCC who had received hepatic carcinectomy in 15 Chinese research centers from January 1, 2012 to November 15, 2013. Patients were eligible if they had histological confirmation of intermediate to advanced HCC (B-C stage of Barcelona Clinic Liver Cancer (BCLC) staging); received hepato-cellular carcinectomy; A-B Child-Pugh classification and Eastern Cooperative Oncology Group Performance Status (ECOG) of 0–2 before the surgical procedure; and a high possibility of disease recurrence (defined as patients having higher number of tumors, vascular invasion, and higher pathological staging). Recurrence rate of HCC is high; ranging from 8% to 15% and in our study, patients were considered to have a high recurrence rate if they met the following criteria: HCC rupture or invasion into adjacent organs (confirmed by intra-operative or post-operative pathology), positive margin (confirmed by post-operative pathology), nodal metastasis (confirmed by intra-operative or post-operative pathology); residual lesion as confirmed by post-operative digital subtract angiography (DSA); macroscopic/microscopic vascular and/or biliary cancer embolus (confirmed by intra-operative or post-operative pathology); three or more tumor lesions distributed over two or more hepatic segments (confirmed by pre-operative imaging [CT, MRI or ultrasonography], intra-operative ultrasonography or post-operative pathology); deranged  $\alpha$ -fetoprotein AFP fails to return to normal range at 2 months after surgery (based on normal range in local laboratory). Sorafenib usage should either be  $\leq 2$  months post procedure and a treatment duration  $\geq 3$  months; or no use of sorafenib after the operation.

Patients were excluded from the study if they had initiated sorafenib  $>2$  months after the surgical procedure;

had relapse within 2 months after the surgical procedure as evident from radiographic examinations; had undergone anticancer treatment (except antiviral therapy) before the surgical procedure; had undergone organ transplantation; had another malignant visceral tumor; or were found to be HIV positive. The study protocols conformed to the ethical guidelines of the Declaration of Helsinki and were approved by the institutional review board (IRB) of each research center. The study methods were conducted in accordance with approved national and international guidelines.

## Study treatment

We hypothesized that sorafenib improves 1-year progression-free survival rate by 30%. Considering this, as per the calculation of 95% study power and type I error of 0.05, patient data for a minimum of 200 cases were to be collected within 6 months (100 cases in the sorafenib group and 100 cases in the control group), which would yield at least 150 patients with high-recurrence risk who can be evaluated in the study. Patients using sorafenib within 2-months post procedure and treatment duration of  $\geq 3$  months were considered in the sorafenib group, whereas patients adopting treatment methods other than sorafenib such as hepatic transarterial chemoembolization (TACE) and systematic whole-body chemotherapy or immunotherapy ( $\alpha$ -interferon) were considered in the control group. Sorafenib tosylate (400 mg) was orally administered twice daily with low- or medium-fat food. Dosage adjustment was done according to recommendation in the instructions. Treatment was continued until the appearance of unacceptable toxicity, both radiological and clinical disease progression, or death. Patients received prescriptions for loperamide and urea-containing ointments to treat instances of severe diarrhea and to prevent and treat skin reactions, respectively.

## Study outcomes

Clinical and pathological data were collected and reviewed from patient medical records, and the most recent values were used before treatment initiation. The primary end point was recurrence-free survival rate at 1 year in patients with a high recurrence risk. The secondary end point was 1-year survival rate and time to recurrence. Safety was assessed by analyzing adverse events (AEs), which were graded according to the National Cancer Institute Common Terminology Criteria for Adverse Events v4.0 (NCI-CTCAE v4.0).<sup>38</sup> Patients were observed from the time of carcinectomy until death, loss to follow-up, or end of the study.

Recurrence-free survival rate at 1 year was defined as the ratio of patients with no relapse within the duration from

the date of carcinectomy until the date of completion of a year. One-year survival rate was defined as the ratio of patients who were still alive within the duration from the date of carcinectomy until the date of completion of 1 year. Time to recurrence refers to the time (number of days) from hepatocellular carcinectomy to the first recurrence of disease, including both intrahepatic and extrahepatic recurrence. As we evaluated the recurrence rate and recurrence free survival for 1-year after hepatic carcinectomy, our study includes only early recurrence type after the resection.

## Statistical analysis

Descriptive statistical methods were used to analyze baseline characteristics of patients. Continuous variables are summarized as mean  $\pm$  standard deviation (SD), median values, and ranges, whereas categorical variables are presented as absolute and relative frequencies. Baseline characteristics and post-operative staging and initial signs in the sorafenib and control groups using  $\chi^2$  test and Wilcoxon rank sum test. Survival, time to progression (TTP), and duration of sorafenib treatment were estimated using the Kaplan-Meier method and compared by the log-rank test for univariate analysis. Cox proportional hazards regression model was used to determine high recurrence risk factor and preoperative patient features and to evaluate the associations between HCC, post-operative pathological staging, and recurrence-free survival rate. Hazard ratios (HRs) and two-sided 95% confidence intervals (CIs) were derived from step-wise Cox proportional hazard regression model. Effect of all potential prognostic factors were determined using ANOVA. Wald inspection was used for determining the correlation. Adverse events were summarized according to the systematic organ classification after MedDRA coding and preferred terms. All *P*-values were two-sided and were considered significant if  $<0.05$ . The statistical analysis of the collected data was performed using SAS (Statistical Analysis System) statistical software for Windows v. 9.1.3 (SAS Institute Inc., Cary, NC, USA).

## Results

### Patient demographics and clinical characteristics

A total of 209 patients with high recurrence risk who underwent HCC at 15 centers were analyzed. Of these patients, 98 were included in the sorafenib group and 111 were included in the control group. Case distributions at all the centers are presented in [Table S1](#). The baseline characteristics of patients are presented in [Table 1](#). The

mean age of patients was significantly higher in the control group compared with the sorafenib group ( $52.73 \pm 10.87$  years vs  $48.57 \pm 12.61$  years,  $P=0.012$ ), with a male predominance in both the groups. A significant difference was observed in BCLC staging in both the groups (sorafenib vs control: stage B, 54.08% vs 69.37%,  $P=0.036$ ; stage C, 44.90% vs 28.82%,  $P=0.036$ ). There were no other differences in terms of follow-up duration, Child-Pugh liver function status, or any other clinical parameter between these groups. Preoperative tumors load in both the groups are presented in Table S2. Post-operative observations of the patients are detailed in Tables 2 and 3. More than 80% of the patients initiated sorafenib therapy within 1–8 weeks after the operation.

### Recurrence free survival at 1-year

All the 98 patients in the sorafenib group and 111 patients in the control group were included in survival analysis to determine the recurrence free survival rates and recurrence time. During the 1-year follow-up, 28 and 34 cases of recurrence or death occurred in the sorafenib group and control groups, respectively. The recurrence free survival at 1-year was non-significantly higher with sorafenib treatment compared to the control group (sorafenib: 70.43%; control: 68.90%;  $\chi^2=0.007$ ,  $P=0.934$ ), Figure 1. Further cox regression analysis revealed that the treatment factors (HR 0.972, 95% CI 0.589, 1.607;  $P=0.913$ ), gender (HR 0.970, 95% CI 0.442, 2.130;  $P=0.939$ ) and preoperative BCLC staging (HR 1.073, 95% CI 0.695, 1.658;  $P=0.749$ ) had no significant impact on the recurrence free survival at 1 year.

### One-year survival rate and time to recurrence

There were four cases of death in the sorafenib group and 18 cases in the control group. One-year survival rate was significantly higher in the sorafenib group compared to the control group (95.56% vs 83.35%;  $\chi^2=7.441$ ,  $P=0.006$ , Figure 2). As per Cox regression analysis for survival, between-the-group difference was significant (HR, 0.279; 95% CI, 0.092–0.850;  $P=0.025$ ; and BCLC staging difference was non-significant (HR, 0.640; 95% CI, 0.240–1.710;  $P=0.374$ ). During the 1-year follow-up, the mean recurrence time in HCC patients after treatment with sorafenib and control was not significantly different ( $196.75 \pm 152.50$  days vs  $232.87 \pm 173.15$ , Wilcoxon rank statistic: 0.792,  $P=0.428$ ), Table 4. Treatment-related factors (HR, 0.255, 95% CI, 0.086–0.756,  $P=0.014$ ) showed significant association with 1-year survival rate. However, gender

(HR, 1.855, 95% CI, 0.627–5.486,  $P=0.264$ ) and preoperative BCLC staging (HR, 0.694, 95% CI, 0.285–1.688,  $P=0.421$ ) demonstrated a non-significant association with time to recurrence as per Cox regression analysis (HR, 1.089, 95% CI, 0.721–1.643,  $P=0.686$ ; and 1.116, 0.801–1.556,  $P=0.516$ ). The difference in survival rates was non-significant. Table 5 presents the overall 1-year recurrence rate, 1-year recurrence after excluding patients with deaths and recurrence in BCLC stage B and C patients after treatment with sorafenib and control. Recurrence rates for all the evaluations were higher after sorafenib treatment; however, the difference was non-significant.

### Safety events

Commonly observed AEs in both the groups are listed in Table 6. A total of 104 AEs was observed in the sorafenib group and 116 in the control group. The incidence of all the AEs was similar in both the groups except for thrombocytopenia, which was significantly lesser in the sorafenib group (1.85%) than the control group (9.40%;  $P=0.015$ ). In addition, transaminase elevation had the highest frequency in both the groups (20.37% vs 24.79%;  $P=0.429$ ). There were three events of hand-foot skin reaction in the sorafenib group, whereas no such reaction was observed in the control group.

### Discussion

Although an optimal treatment strategy, hepatocellular carcinectomy and resection has a major drawback of relapse/recurrence in majority of the cases. Effective results obtained with sorafenib in the treatment of HCC have led to exploration of the drug's application in recurrence.<sup>10,11</sup> In addition, recommendation on the post-transplant use of sorafenib therapy in HCC recurrence remains to be elucidated. HCC recurrence either after resection or transplantation portrays poor prognosis of patients.<sup>24</sup> This large, multicenter, retrospective analysis evaluated the effect of sorafenib in 209 patients with a high risk of recurrence post-hepatic carcinectomy.

Sorafenib has shown efficacy in treating recurrent HCC after liver transplantation (LT) and hepatic resection alone as adjuvant therapy and by demonstrating a synergistic effect in combination with sirolimus.<sup>10,11,25</sup> Nonetheless, the response rate and time to tumor progression in patients treated with sorafenib for recurrent HCC after transplantation were found to be comparable to HCC patients without transplantation.<sup>19,26</sup> A pilot study by Wang et al<sup>16</sup> (2014) demonstrated a significantly higher time to recurrence in the sorafenib group than in the control group ( $21.45 \pm 1.98$  vs  $13.44 \pm 2.66$

**Table I** Characteristics of the study population

Parameters	Sorafenib (n=98)	Control (n=111)	P-value
Age, median (IQR)	46.5 (15–77)	55 (30–79)	0.012
Follow-up, mean days (SD)	732.63 (421.91)	826.52 (463.00)	0.143
<b>Gender, n (%)</b>			0.59
Male	86 (87.76)	100 (90.09)	
Female	12 (12.24)	11 (19.91)	
<b>BCLC staging, (%)</b>			0.036
Stage B	53 (54.08)	77 (69.37)	
Stage C	44 (44.90)	32 (28.83)	
Unable to evaluate	1 (1.02)	2 (1.80)	
<b>Child-Pugh overall score, n (%)</b>			0.331
Stage A	87 (88.78)	90 (81.08)	
Stage B	10 (10.20)	18 (16.22)	
Stage C	0 (0.0)	2 (1.80)	
Unable to evaluate	1 (1.02)	1 (0.90)	
<b>Surgical margin, n (%)</b>			0.245
R0 excision	90 (92.78)	107 (96.40)	
R1 excision	7 (7.22)	4 (3.60)	
Missing	1 (1.02)	0 (0.0)	
<b>Blood vessel and bile duct invasion, n (%)</b>			0.645
None	56 (57.73)	60 (54.55)	
Existing	41 (42.27)	50 (45.45)	
Missing	1 (1.02)	1 (0.90)	
<b>Lymphatic metastasis, n (%)</b>			1.000
None	96 (97.96)	108 (98.18)	
Existing	2 (2.04)	2 (1.82)	
Missing	0 (0.0)	1 (0.90)	
<b>HCC initial diagnosis, n (%)</b>			0.342
Serum tumor markers	31 (31.63)	34 (30.63)	
Imagological examination	58 (59.18)	72 (64.86)	
Pathological examination	8 (8.16)	3 (2.70)	
Unknown	0 (0.00)	1 (0.90)	
Others	1 (1.02)	1 (0.90)	
<b>AFP (IU/mL), mean (SD)</b>	994.69 (1817.97)	1071.79 (1983.35)	0.958
<b>AFP clinical assessment, n (%)</b>			0.865
Normal	26 (31.33)	29 (29.59)	
Abnormal – no clinical significance	3 (3.61)	5 (5.10)	
Abnormal – clinical significance	54 (65.06)	64 (65.31)	
Unknown/not checked	0 (0.0)	13 (11.7)	
<b>AFP, n (%)</b>			0.497
Normal	30 (30.61)	23 (20.72)	
Abnormal – no clinical significance	3 (3.06)	3 (2.70)	
Abnormal – clinical significance	14 (14.28)	18 (16.21)	
Unknown/not checked	0 (52.04)	67 (60.36)	
<b>Max tumor diameter, mean cm (SD)</b>	7.91 (3.42)	7.12 (3.21)	0.075

(Continued)

**Table 1** (Continued).

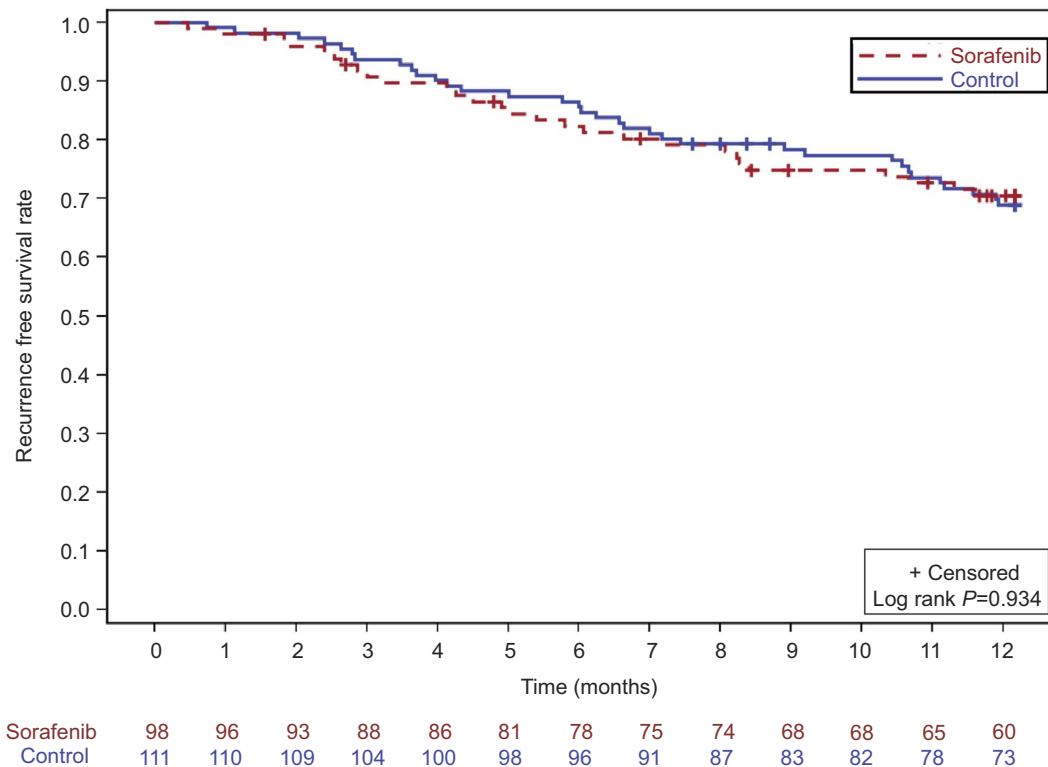
Parameters	Sorafenib (n=98)	Control (n=111)	P-value
<b>Length of the sum, mean (SD)</b>	9.26 (4.20)	8.46 (4.86)	0.021
<b>Pre-operative ECOG status, n (%)</b>			0.173
0	54 (55.67)	71 (63.96)	
1	42 (42.30)	36 (32.43)	
2	1 (1.02)	4 (3.60)	
Unknown/missing	1 (1.02)	0 (0.0)	

**Table 2** Post-operative (before taking medicine) pathological grading and stage

Parameters	Sorafenib (n=98)	Control (n=111)	P-value
<b>Post-operative BCLC staging, n (%)</b>	n=75	n=79	0.036
Stage A	3 (4.00)	2 (2.56)	
Stage B	25 (38.89)	39 (50.00)	
Stage C	41 (27.78)	37 (50.00)	
Stage D	2 (11.11)	0 (0.00)	
Unable to evaluate	4 (5.33)	0 (0.0)	
<b>Post-operative staging T, n (%)</b>	n=56	n=63	0.413
1	10 (17.86)	10 (15.63)	
2	14 (25.00)	21 (32.81)	
3	30 (53.57)	27 (42.19)	
4	2 (3.57)	6 (9.38)	
<b>Post-operative staging N, n (%)</b>			0.341
0	53 (100.00)	4 (100.00)	
1	3 (5.36)	1 (1.59)	
<b>Post-operative staging M, n (%)</b>			
0	56 (100.00)	63 (98.41)	
1	0 (0.0)	0 (0.0)	
<b>Number of lesions, n (%)</b>			0.575
1	67 (68.37)	78 (70.91)	
2	13 (13.27)	14 (12.73)	
3	6 (6.12)	10 (9.09)	
>3	12 (12.24)	8 (7.27)	
<b>Post-operative diameter (mm), mean (SD)</b>	7.83 (3.48)	7.29 (3.33)	0.253
<b>Post-operative long diameter of sum( mm), mean (SD)</b>	9.43 (4.63)	8.28 (4.35)	0.032
<b>Blood vessel and bile duct invasion, n (%)</b>	n=96	n=110	0.562
No	44 (45.83)	46 (41.82)	
Yes	52 (54.17)	64 (58.18)	
<b>Post-operative lymph node metastasis, n (%)</b>	n=97	n=97	0.739
No	92 (94.85)	102 (96.23)	
Yes	5 (5.15)	4 (3.77)	

**Table 3** Comparison of post-operative initial signs at first interview between groups

Items	Sorafenib (n=98)	Control (n=111)	P-value
<b>Post-operative ECOG, n (%)</b>	<b>(n=77)</b>	<b>(n=46)</b>	
0	26 (33.77)	11 (23.91)	0.2505
1	40 (51.95)	21 (45.65)	0.4993
2	11 (14.29)	14 (30.43)	0.0321
<b>Post-operative Child Pugh score, n (%)</b>	<b>(n=96)</b>	<b>(n=74)</b>	
A	64 (66.67)	46 (60.53)	0.4097
B	11 (11.46)	12 (15.79)	0.4118
C	1 (1.04)	0 (0.00)	-
Unable to evaluate	20 (20.83)	18 (23.68)	0.6578
<b>Post-operative AFP (IU/mL), mean (SD)</b>	439.78 (889.75)	503.96 (1689.83)	0.170
<b>Post-operative AFP evaluation, n (%)</b>	<b>(n=78)</b>	<b>(n=73)</b>	
Normal	19 (24.36)	20 (27.40)	0.6708
Abnormal – no clinical significance	1 (1.28)	1 (1.37)	0.9616
Abnormal – clinical significance	24 (30.77)	18 (24.66)	0.4040
Unknown/not checked	34 (43.59)	34 (46.58)	0.7148
<b>Post-operative visual results, n (%)</b>	<b>(n=47)</b>	<b>(n=32)</b>	
Intrahepatic recurrence	7 (14.89)	8 (25.00)	0.2637
Distant metastasis	0 (0.00)	1 (3.13)	-
No recurrence/metastasis	37 (78.72)	22 (68.75)	0.3202
Unable to evaluate	3 (6.38)	1 (3.13)	0.5204



**Figure 1** One-year recurrence-free survival rates.

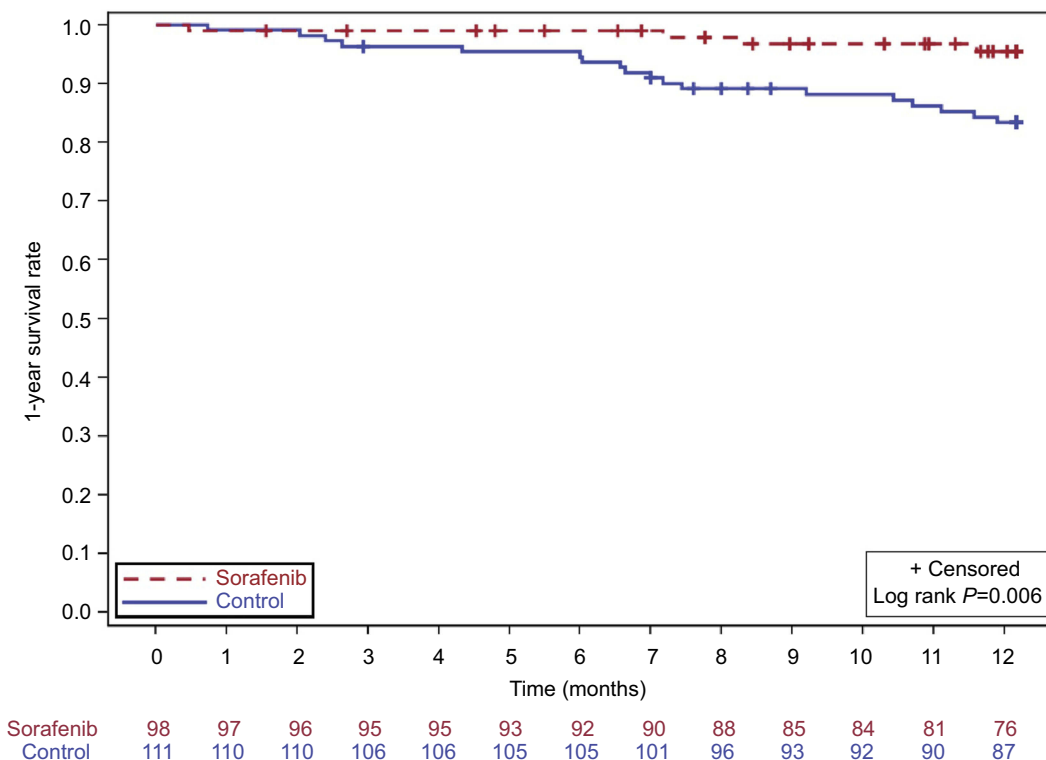


Figure 2 One-year survival rate.

Table 4 HCC recurrence time (days)

Index	Sorafenib	Control	Statistics	P-value
N (missing)	36 (0)	31 (0)	0.792	0.428
Mean (SD)	196.75 (152.50)	232.87 (173.15)	Wilcoxon rank sum test	
Median	149.00	173.00	-	-
Q1, Q3	88.00, 251.50	85.00, 358.00	-	-
Min, max	27.00, 789.00	34.00, 825.00	-	-

months, respectively;  $P=0.006$ ), with a lesser recurrence rate in the sorafenib group than the control group (29.4% vs 70.7%;  $P=0.032$ ). Adjuvant use of sorafenib was found to be safe and decreased the risk of HCC recurrence in high-risk LT recipients, with a disease-free survival rate of 100% in the sorafenib group.<sup>27</sup> Similar beneficial effects of sorafenib in HCC recurrence post liver resection and transplantation have been reported in the literature.<sup>10,11,20,28,29</sup> Of note, the International Consensus Conference for HCC recommends that HCC recurrence post liver transplantation may be treated with surgery for resectable lesions or with sorafenib for unresectable lesions.<sup>30</sup> In a retrospective analysis, Kim et al<sup>31</sup> concluded that sorafenib had better survival benefit than other treatments in patients with extrahepatic spread and massive/infiltrative intrahepatic tumors. These outcomes indicate that sorafenib might be an important therapeutic modality in treating patients with

extrahepatic recurrence. Furthermore, in a case-control study by Sposito et al,<sup>32</sup> sorafenib demonstrated significantly better results than best medical care regimens in patients with HCC recurrence (median patient survival from recurrence: 21.3 months vs 11.8 months, HR =5.2,  $P=0.0009$ ). Moreover, multivariate analysis revealed sorafenib treatment to be the only factor associated with survival (HR, 4.0,  $P=0.0325$ ) with no serious AEs.

In the present study, we found that recurrence-free survival rate at 1 year was not significantly different between the two groups ( $P=0.934$ ). A similar study by Saab et al<sup>15</sup> demonstrated significant increase compared to control in relatively smaller sample size. This difference, may be due to the high patient heterogeneity in terms of disease severity and progression. Similarly, time to relapse was non-significant between the two groups ( $P=0.701$ ). However, 1-year survival rate was



**Table 5** One-year recurrence rates

Parameter	Index	Sorafenib	Control	P-value
1-year recurrence rate, n (%)	No recurrence	66 (67.35)	87 (78.38)	0.072
	Recurrence	32 (32.65)	24 (21.62)	
	Total	98	111	
1-year recurrence rate after excluding death cases, n (%)	No recurrence	64 (66.67)	73 (75.26)	0.189
	Recurrence	32 (33.33)	24 (24.74)	
	Total	96	97	
<b>1-year recurrence rate considering uneven staging distribution</b>				
1-year recurrence rate after excluding patients who died, n (%)	No recurrence	36 (70.59)	48 (72.73)	0.799
	Recurrence	15 (29.41)	18 (27.27)	
	Total	51	66	
1-year recurrence rate after excluding patients who died, n (%)	No recurrence	27 (61.36)	24 (80.00)	0.089
	Recurrence	17 (38.64)	6 (20.00)	
	Total	44	30	
Competing risk analysis without the effect of death	Recurrence Time	36 (0)	31 (0)	0.428
	Mean (SD)	196.75 (152.50)	232.87 (173.15)	
	Median	149.00	173.00	
	Q1, Q3	88.00, 251.50	85.00, 358.00	
	Min, max	27.00, 789.00	34.00, 825.00	

**Table 6** Adverse events occurrence rates between the sorafenib and control groups

Adverse events	Sorafenib, n (%)	Control, n (%)	Chi-square	P-value
Diarrhea	7 (6.48)	2 (1.71)	3.331	0.068
Fever	5 (5.56)	5 (4.27)	0.199	0.656
Anemia	1 (0.93)	3 (2.56)	0.863	0.671
Thrombocytopenia	2 (1.85)	10 (9.40)	5.880	0.015*
Nausea	1 (0.93)	3 (2.56)	0.180	0.671
Transaminase elevation	20 (20.37)	28 (24.79)	0.625	0.429
Vomiting	1 (0.93)	3 (2.56)	0.863	0.671
Leucocyte rises	9 (9.26)	6 (5.13)	1.451	0.228
Increase in neutrophils	8 (8.33)	7 (5.98)	0.470	0.493
Decrease in lymphocytes	4 (3.70)	1 (0.85)	2.098	0.148
Decrease in albumin	1 (0.93)	5 (4.27)	2.245	0.119
Hypokalemia	1 (0.93)	1 (0.85)	0.262	0.609
Cough	3 (2.78)	2 (1.71)	0.077	0.782
Rise in DBIL	8 (8.33)	9 (8.55)	0.003	0.954
Total bilirubin	6 (6.48)	11 (10.26)	1.035	0.309
Abdominal distension	1 (0.93)	1 (0.85)	0.003	0.955
HFSR	3 (2.78)	0 (0)	-	-

**Note:** \*Clinically significant.

significantly higher in the sorafenib group than the control group ( $P=0.006$ ). This might be because recurrent tumors progressed at a slower pace after sorafenib treatment. Likewise, in a single-center retrospective study of 78 patients, sorafenib did not significantly prolong recurrence-free survival compared with the control group (11.7 vs 11.0 months, respectively;  $P=0.702$ ), but

it significantly prolonged the overall survival (32.4 vs 25.0 months;  $P=0.046$ ). In patients with HCC post curative resection, sorafenib did not significantly reduce the recurrence rate compared with the control group (67.7% vs 78.3%;  $P=0.737$ ), but it significantly reduced the mortality rate (28.1% vs 60.9%;  $P=0.004$ ).<sup>33</sup> Sorafenib inhibits tumor proliferation and

angiogenesis by acting on multiple pathways;<sup>34–36</sup> however, tumor cell killing (autophagy) with sorafenib is speculated to be through the stress induced by sorafenib involvement in autophagy of the HCC cells.<sup>37</sup> Therefore, our findings of significantly higher 1-year survival rate and non-significantly higher recurrence free survival at 1-year might be associated with the mechanisms of action, respectively.

Although better patient compliance and fewer AEs are associated with a smaller dose of sorafenib in patients with liver transplantation and liver resection having a high recurrence risk, we found that 400 mg of sorafenib twice daily did not lead to significant toxicity.<sup>15,38</sup> Moreover, the incidence of thrombocytopenia was significantly lower in the sorafenib group than the control group ( $P=0.015$ ). Incidences of all other AEs were similar in both the groups. Though the patients treated with sorafenib had a significantly higher overall survival, there was no significant evidence that showed sorafenib can prevent recurrence. Even though xenograft model animal studies have reported that sorafenib can effectively suppress postsurgical HCC recurrence and metastasis,<sup>39</sup> there are no such convincing evidences in human trials. The current study has several limitations and, hence, the inferences should be drawn with caution. The retrospective nature of the study and non-randomization of the included patients and small sample size, is similar to previously reported studies and the findings may not be sufficient to inspire clinical use, however, this study proves efficacy and safety of sorafenib in Chinese patients with recurrent post hepatic carcinectomy and we tried to exclude the screening bias by including the control group patients who received carcinectomy within 6-months prior to the time when carcinectomy was initiated in the sorafenib group patients. Hence, future large-sized, randomized controlled studies are warranted to validate the findings and prove generalizability and clinical use of sorafenib. Overall, we advocate that treatment of recurrent HCC requires a multidisciplinary approach involving hepatologists, surgeons, radiologists, oncologists, and radiation oncologists. Improvement in treatment objectives and modification of the current recommendation will certainly benefit patients with a high recurrence risk.

In conclusion, Sorafenib significantly improved the 1-year survival rate in Chinese HCC patients with high risk of recurrence, though it did not increase the 1-year recurrence-free survival rate and time to recurrence. With a satisfactory safety and efficacy profile, it may be considered a feasible treatment option for recurrent HCC. However, further large, randomized controlled trials are needed to confirm the outcomes.

## Study protocol approval

The protocol for the study was approved by the IRBs of the following Chinese hospitals: Xijing Hospital, Shaanxi; Anhui Provincial Hospital, Hefei; Xiangya Hospital, Changsha; West China Hospital, Chengdu; Cancer Hospital of Xinjiang, Urumqi; Southwest Hospital, Chongqing; Cancer Hospital of Henan, Zhengzhou; Cancer Hospital of Guangxi Medical University, Nanning; The First Affiliated Hospital of Guangxi Medical University, Nanning; The First Affiliated Hospital of Kunming Medical University, Kunming; Wuhan Union Hospital, Wuhan; The Second Affiliated Hospital of Xiangya, Changsha; Cancer Hospital of Sichuan, Chengdu; and Wuhan Tongji Hospital, Wuhan.

## Informed consent

As this study was retrospective in nature the need of informed consent was waived off by the IRBs; however, all patient data were kept confidential to maintain patient anonymity.

## Acknowledgments

The authors thank Dr Amit Bhat and Karan Sharma (Indegene Pvt. Ltd, Bangalore India) for providing medical writing support and technical assistance in the development of this manuscript, as funded by Bayer Healthcare Co. Ltd., China.

## Author contributions

All authors made substantial contributions to conception and design, acquisition of data, or analysis and interpretation of data; took part in drafting the article or revising it critically for important intellectual content; gave final approval of the version to be published; and agree to be accountable for all aspects of the work.

## Disclosure

The authors report no conflicts of interest in this work.

## References

1. Park J-W, Chen M, Colombo M, et al. Global patterns of hepatocellular carcinoma management from diagnosis to death: the BRIDGE study. *Liver Int Off J Int Assoc Study Liver*. 2015;35:2155–2166. doi:10.1111/liv.12818
2. Schwartz M, Roayaie S, Konstadoulakis M. Strategies for the management of hepatocellular carcinoma. *Nat Clin Pract Oncol*. 2007;4:424–432. doi:10.1038/ncponc0844
3. Saraswat VA, Pandey G, Shetty S. Treatment algorithms for managing hepatocellular carcinoma. *J Clin Exp Hepatol*. 2014;4:S80–S89. doi:10.1016/j.jceh.2014.05.004

4. Chok KSH, Chan SC, Cheung TT, et al. Late recurrence of hepatocellular carcinoma after liver transplantation. *World J Surg.* 2011;35:2058–2062. doi:10.1007/s00268-011-1146-z
5. Okada S, Shimada K, Yamamoto J, et al. Predictive factors for post-operative recurrence of hepatocellular carcinoma. *Gastroenterology.* 1994;106:1618–1624. doi:10.1016/0016-5085(94)90419-7
6. Kumada T, Nakano S, Takeda I, et al. Patterns of recurrence after initial treatment in patients with small hepatocellular carcinoma. *Hepatology Baltim Md.* 1997;25:87–92. doi:10.1053/jhep.1997.v25.pm0008985270
7. Portolani N, Coniglio A, Ghidoni S, et al. Early and late recurrence after liver resection for hepatocellular carcinoma: prognostic and therapeutic implications. *Ann Surg.* 2006;243:229–235. doi:10.1097/01.sla.0000197706.21803.a1
8. Llovet JM, Ricci S, Mazzaferro V, et al. Sorafenib in advanced hepatocellular carcinoma. *N Engl J Med.* 2008;359:378–390. doi:10.1056/NEJMoa0708857
9. Kudo M, Finn RS, Qin S, et al. Lenvatinib versus sorafenib in first-line treatment of patients with unresectable hepatocellular carcinoma: a randomised phase 3 non-inferiority trial. *Lancet.* 2018;391:1163–1173. doi:10.1016/S0140-6736(18)30207-1
10. Vitale A, Boccagni P, Kertusha X, et al. Sorafenib for the treatment of recurrent hepatocellular carcinoma after liver transplantation? *Transplant Proc.* 2012;44:1989–1991. doi:10.1016/j.transproceed.2012.06.046
11. Sotiropoulos GC, Nowak KW, Fouzas I, et al. Sorafenib treatment for recurrent hepatocellular carcinoma after liver transplantation. *Transplant Proc.* 2012;44:2754–2756. doi:10.1016/j.transproceed.2012.09.022
12. Bhoori S, Toffanin S, Sposito C, et al. Personalized molecular targeted therapy in advanced, recurrent hepatocellular carcinoma after liver transplantation: a proof of principle. *J Hepatol.* 2010;52:771–775. doi:10.1016/j.jhep.2010.01.025
13. Newell P, Toffanin S, Villanueva A, et al. Ras pathway activation in hepatocellular carcinoma and anti-tumoral effect of combined sorafenib and rapamycin in vivo. *J Hepatol.* 2009;51:725–733. doi:10.1016/j.jhep.2009.03.028
14. Yoon DH, Ryoo B-Y, Ryu M-H, et al. Sorafenib for recurrent hepatocellular carcinoma after liver transplantation. *Jpn J Clin Oncol.* 2010;40:768–773. doi:10.1093/jcco/hyq055
15. Saab S, McTigue M, Finn RS, Busuttill RW. Sorafenib as adjuvant therapy for high-risk hepatocellular carcinoma in liver transplant recipients: feasibility and efficacy. *Exp Clin Transplant Off J Middle East Soc Organ Transplant.* 2010;8:307–313.
16. Wang S-N, Chuang S-C, Lee K-T. Efficacy of sorafenib as adjuvant therapy to prevent early recurrence of hepatocellular carcinoma after curative surgery: a pilot study: sorafenib prevents early HCC recurrence. *Hepatology Res.* 2014;44:523–531. doi:10.1111/hepr.12159
17. Pffiffer TE, Seehofer D, Nicolaou A, et al. Relapse of hepatocellular carcinoma (HCC) after liver transplantation (LT): a single-center analysis on 139 patients in the sorafenib era. *J Clin Oncol.* 2010;28:4088. doi:10.1200/jco.2010.28.15\_suppl.4088
18. Bruix J, Takayama T, Mazzaferro V, et al. Adjuvant sorafenib for hepatocellular carcinoma after resection or ablation (STORM): a phase 3, randomised, double-blind, placebo-controlled trial. *Lancet Oncol.* 2015;16:1344–1354. doi:10.1016/S1470-2045(15)00198-9
19. Llovet JM, Bruix J. Novel advancements in the management of hepatocellular carcinoma in. *J Hepatol.* 2008;48:S20–S37. doi:10.1016/j.jhep.2008.01.022
20. Alsina AE, Makris A, Nenos V, et al. Can sorafenib increase survival for recurrent hepatocellular carcinoma after liver transplantation? A pilot study. *Am Surg.* 2014;80:680–684.
21. Ning Chong CC, San Lai PB. Treatment strategy for recurrent hepatocellular carcinoma. In: Julianov A, editor. *Liver Tumors*. London: InTech; 2012: Chapter 8.
22. De Simone P, Crocetti L, Pezzati D, et al. Efficacy and safety of combination therapy with everolimus and sorafenib for recurrence of hepatocellular carcinoma after liver transplantation. *Transplant Proc.* 2014;46:241–244. doi:10.1016/j.transproceed.2013.10.035
23. Takahara T, Nitta H, Hasegawa Y, et al. Using sorafenib for recurrent hepatocellular carcinoma after liver transplantation—interactions between calcineurin inhibitor: two case reports. *Transplant Proc.* 2011;43:2800–2805. doi:10.1016/j.transproceed.2011.06.063
24. Yokoyama I, Carr B, Saitsu H, et al. Accelerated growth rates of recurrent hepatocellular carcinoma after liver transplantation. *Cancer.* 1991;68:2095–2100.
25. Kim R, Aucejo F. Radiologic complete response with sirolimus and sorafenib in a hepatocellular carcinoma patient who relapsed after orthotopic liver transplantation. *J Gastrointest Cancer.* 2011;42:50–53. doi:10.1007/s12029-010-9196-2
26. Feun LG, Levi D, Moon J, et al. Tzakis A Sorafenib in hepatocellular carcinoma (HCC) patients after liver transplantation. *J Clin Oncol.* 2009;27(15):e15579.
27. Shetty K, Dash C, Laurin J. Use of adjuvant sorafenib in liver transplant recipients with high-risk hepatocellular carcinoma. *J Transplant.* 2014;(2014):913634. doi:10.1155/2014/913634
28. Yokoo H, Kamiyama T, Kakisaka T, et al. [Efficacy of sorafenib for extrahepatic recurrence of hepatocellular carcinoma after liver resection]. *Gan To Kagaku Ryoho.* 2015;42:1497–1499.
29. Weinmann A, Niederle IM, Koch S, et al. Sorafenib for recurrence of hepatocellular carcinoma after liver transplantation. *Dig Liver Dis Off J Ital Soc Gastroenterol Ital Assoc Study Liver.* 2012;44:432–437. doi:10.1016/j.dld.2011.12.009
30. Clavien P-A, Lesurtel M, Bossuyt PMM, et al. Recommendations for liver transplantation for hepatocellular carcinoma: an international consensus conference report. *Lancet Oncol.* 2012;13:e11–e22. doi:10.1016/S1470-2045(11)70175-9
31. Kim HY, Park J-W, Nam B-H, et al. Survival of patients with advanced hepatocellular carcinoma: sorafenib versus other treatments. *J Gastroenterol Hepatol.* 2011;26:1612–1618. doi:10.1111/j.1440-1746.2011.06751.x
32. Sposito C, Mariani L, Germini A, et al. Comparative efficacy of sorafenib versus best supportive care in recurrent hepatocellular carcinoma after liver transplantation: a case-control study. *J Hepatol.* 2013;59:59–66. doi:10.1016/j.jhep.2013.02.026
33. Zhang W, Zhao G, Wei K, et al. Adjuvant sorafenib reduced mortality and prolonged overall survival and post-recurrence survival in hepatocellular carcinoma patients after curative resection: a single-center experience. *Biosci Trends.* 2014;8:333–338. doi:10.5582/bst.2014.01120
34. Liu L, Cao Y, Chen C, et al. Sorafenib blocks the RAF/MEK/ERK pathway, inhibits tumor angiogenesis, and induces tumor cell apoptosis in hepatocellular carcinoma model PLC/PRF/5. *Cancer Res.* 2006;66:11851–11858. doi:10.1158/0008-5472.CAN-06-1377
35. Wei J, Meng F, Qu K, et al. Sorafenib inhibits proliferation and invasion of human hepatocellular carcinoma cells via up-regulation of p53 and suppressing FoxM1. *Acta Pharmacol Sin.* 2015;36:241–251. doi:10.1038/aps.2014.122
36. Furuse J. Sorafenib for the treatment of unresectable hepatocellular carcinoma. *Biol Targets Ther.* 2008;2:779–788. doi:10.2147/BTT.S3410
37. Heqing Y, Bin L, Xuemei Y, Linfa L. The role and mechanism of autophagy in sorafenib targeted cancer therapy. *Crit Rev Oncol Hematol.* 2016;100:137–140. doi:10.1016/j.critrevonc.2016.02.006
38. Kitade H, Yanagida H, Yokoigawa N, et al. [Two patients with recurrence of hepatocellular carcinoma after liver resection who achieved long-term stable disease with small doses of sorafenib therapy]. *Gan To Kagaku Ryoho.* 2015;42:863–865.
39. Feng Y-X, Wang T, Deng Y-Z, et al. Sorafenib suppresses postsurgical recurrence and metastasis of hepatocellular carcinoma in an orthotopic mouse model. *Hepatology Baltim Md.* 2011;53:483–492. doi:10.1002/hep.24075

## Supplementary materials

**Table S1** Case distribution

Center	Group	No. in the group	No. rejected
Xijing Hospital	Sorafenib	13	0
	Control group	24	0
	Total	37	0
Anhui Provincial Hospital	Sorafenib	11	2
	Control group	22	0
	Total	33	2
Sichuan Huaxi Hospital	Sorafenib	13	1
	Control group	8	0
	Total	21	1
Sichuan tumor	Sorafenib	2	0
	Control group	3	0
	Total	5	0
Southwest Hospital	Sorafenib	10	1
	Control group	10	0
	Total	20	1
Guangxi Medical University's Tumor Hospital	Sorafenib	4	0
	Control group	7	2
	Total	11	2
Guangxi Medical University's First Affiliated Hospital	Sorafenib	5	3
	Control group	5	5
	Total	10	8
First Xiangya Hospital	Sorafenib	11	0
	Control group	11	0
	Total	22	0
Second Xiangya Hospital	Sorafenib	4	2
	Control group	1	0
	Total	5	2
Henan Tumor Hospital	Sorafenib	7	0
	Control group	7	0
	Total	14	0
Kunming Medical University's First Hospital	Sorafenib	4	0
	Control group	4	0
	Total	8	0
Xijiang Tumor Hospital	Sorafenib	12	0
	Control group	6	0
	Total	18	0
Wuhan Union Hospital	Sorafenib	1	0
	Control group	6	0
	Total	7	0
Wuhan Tongji Hospital	Sorafenib	6	0
	Control group	0	0
	Total	6	0
Jiangxi Tumor Hospital	Sorafenib	4	0
	Control group	4	0
	Total	8	0
Total	Sorafenib	107	9
	Control group	118	7
	Total	225	16

**Table S2** Preoperative tumor load

Items	Indicators	Sorafenib	Control	Total	P-value
Tumor position I	0, n (%)	3 (3.19)	3 (3.23)	6 (3.17)	0.431
	Selected, n (%)	6 (6.38)	2 (2.15)	8 (4.23)	
	Not selected, n (%)	85 (90.43)	88 (94.62)	175 (92.59)	
Tumor position II	Selected, n (%)	18 (19.78)	22 (24.44)	41 (22.40)	0.450
	Not selected, n (%)	73 (80.22)	68 (75.56)	142 (77.60)	
Tumor position III	Selected, n (%)	16 (17.58)	23 (25.56)	40 (21.86)	0.192
	Not selected, n (%)	75 (82.42)	67 (74.44)	143 (78.14)	
Tumor position IV	Selected, n (%)	18 (19.78)	24 (26.67)	43 (23.50)	0.272
	Not selected, n (%)	73 (80.22)	66 (73.33)	140 (76.50)	
Tumor position V	Selected, n (%)	37 (40.66)	42 (46.67)	80 (43.72)	0.415
	Not selected, n (%)	54 (59.34)	48 (53.33)	103 (56.28)	
Tumor position VI	Selected, n (%)	47 (51.65)	51 (56.67)	99 (54.10)	0.498
	Not selected, n (%)	44 (48.35)	39 (43.33)	84 (45.90)	
Tumor position VII	Selected, n (%)	41 (45.05)	33 (36.67)	75 (40.98)	0.251
	Not selected, n (%)	50 (54.95)	57 (63.33)	108 (59.02)	
Tumor position VIII	Selected, n (%)	33 (36.26)	25 (27.78)	59 (32.24)	0.221
	Not selected, n (%)	58 (63.74)	65 (72.22)	124 (67.76)	
Number of focuses	0, n (%)	0 (0.00)	2 (1.74)	2 (0.89)	0.672
	1, n (%)	76 (70.37)	83 (72.17)	159 (70.67)	
	2, n (%)	15 (13.89)	11 (9.57)	27 (12.00)	
	3, n (%)	5 (4.63)	5 (4.35)	10 (4.44)	
	>3, n (%)	12 (11.11)	14 (12.17)	27 (12.00)	
Maximum diameter	N (missing)	108 (0)	114 (1)	224 (1)	0.145
	Mean (SD)	7.90 (3.48)	7.30 (3.37)	7.55 (3.44)	
Sum of long diameter	N (missing)	108 (0)	111 (4)	221 (4)	0.031
	Mean (SD)	9.25 (4.20)	8.66 (5.19)	8.93 (4.72)	
Blood vessel and bile duct invasion	None, n (%)	60 (56.60)	63 (55.26)	124 (55.86)	0.841
	Existing, n (%)	46 (43.40)	51 (44.74)	98 (44.14)	
Invaded position	Portal vein, n (%)	39 (84.78)	35 (71.43)	74 (77.08)	0.196
	Hepatic vein, n (%)	2 (4.35)	4 (8.16)	6 (6.25)	
	Capillaries, n (%)	4 (8.70)	10 (20.41)	15 (15.63)	
	Bile duct, n (%)	1 (2.17)	0 (0.00)	1 (1.04)	
Lymphatic metastasis	None, n (%)	105 (98.13)	112 (98.25)	219 (98.21)	1.000
	Existing, n (%)	2 (1.87)	2 (1.75)	4 (1.79)	
Distant metastasis	None, n (%)	101 (94.39)	113 (99.12)	216 (96.86)	0.059
	Existing, n (%)	6 (5.61)	1 (0.88)	7 (3.14)	
Distant metastasis positions	Lung, n (%)	1 (33.33)	0 (0.00)	1 (33.33)	<0.001
	Others, n (%)	2 (66.67)	0 (0.00)	2 (66.67)	

### OncoTargets and Therapy

Dovepress

### Publish your work in this journal

OncoTargets and Therapy is an international, peer-reviewed, open access journal focusing on the pathological basis of all cancers, potential targets for therapy and treatment protocols employed to improve the management of cancer patients. The journal also focuses on the impact of management programs and new therapeutic

agents and protocols on patient perspectives such as quality of life, adherence and satisfaction. The manuscript management system is completely online and includes a very quick and fair peer-review system, which is all easy to use. Visit <http://www.dovepress.com/testimonials.php> to read real quotes from published authors.

Submit your manuscript here: <https://www.dovepress.com/oncotargets-and-therapy-journal>