

# Pleomorphic Leiomyosarcoma of the Adrenal Gland in a Young Woman: A Case Report and Review of the Literature

This article was published in the following Dove Press journal:  
*OncoTargets and Therapy*

Yuanyuan Wang<sup>1,\*</sup>  
Yongliang Teng<sup>2,\*</sup>  
Shibo Na<sup>3</sup>  
Ye Yuan<sup>1</sup>

<sup>1</sup>Department of Anesthesiology, The First Hospital of Jilin University, Changchun, Jilin, People's Republic of China; <sup>2</sup>Department of Pathology, The First Hospital of Jilin University, Changchun, Jilin, People's Republic of China; <sup>3</sup>Department of Spinal Surgery, The First Hospital of Jilin University, Changchun, Jilin, People's Republic of China

\*These authors contributed equally to this work

**Abstract:** Leiomyosarcoma usually arises in the uterus, abdominal and urologic viscera, and walls of large and small blood vessels. However, primary adrenal leiomyosarcoma is extremely rare with only 39 cases previously reported in English-language literature. We report a case of a 29-year-old previously healthy woman with an incidentally found right adrenal-occupying lesion. CT scan revealed a right adrenal mass measuring 3.3×3.4 cm in size. The tumor was successfully removed by laparoscopic adrenalectomy. Postoperative histopathologic examination showed spindle cells arranged in interlacing fascicles with pleomorphism and a high mitotic rate. An immunohistochemical examination showed positive staining for SMA, desmin, vimentin and H-caldesmon, and the diagnosis of a well-differentiated adrenal leiomyosarcoma was established. The patient received no other oncological treatment after surgery and currently has no evidence of residual disease or tumor recurrence according to imaging follow-up.

**Keywords:** adrenal gland, adrenal gland neoplasms, leiomyosarcoma, adrenalectomy

## Introduction

Leiomyosarcoma is a malignant mesenchymal tumor composed of cells showing distinct features of the smooth muscle lineage.<sup>1</sup> The most common anatomic sites are the uterus, abdominal and urologic viscera, and walls of large and small blood vessels. Occasionally, these tumors arise in bone, in somatic soft tissues and extremely rarely in the adrenal gland.<sup>2,3</sup> In 1981, Choi SH et al reported the first case of primary adrenal leiomyosarcoma (PAL). There are only 39 cases reported in English-language literature so far. Definitive diagnosis of PAL is usually achieved only after pathologic examination of the surgical specimen. Due to the development and wide use of imaging techniques such as computed tomography (CT) and ultrasonography, unexpected and special incidentaloma lesions can be detected more easily. Herein, we describe a case of a young woman with PAL without any discomfort. In addition, we report on our analysis of pathological features and corresponding data extracted from the 39 reported cases. Our aim is to share our experiences with rare tumors and discuss the epidemiology, anatomical localization, and diagnosis and current treatment strategies.

## Case Report

A 29-year-old previously healthy Chinese woman incidentally found a right suprarenal mass by abdominal ultrasound on a preemployment examination. The patient

Correspondence: Ye Yuan  
Tel +86-13604430557  
Email yeyuan1225@sina.com

denied systemic symptoms, pain, fever, anorexia, and other notable medical history. Physical examination did not reveal any significant abdominal tenderness, lymphadenopathy or other findings. Routine laboratory examinations were normal, including complete blood count, renal function and electrolyte levels. All the hormonal data showed that 24-h urine cortisol and plasma aldosterone to renin ratio were within normal limits, as were catecholamines and ACTH levels. Cortisol post 1 mg dexamethasone was 0.5  $\mu\text{g}/\text{dl}$  (normal < 1.8). HIV-1 and HIV-2 antibody tests were non-reactive. Abdominal ultrasound showed the presence of a diffusely hypoechoic, homogeneous mass in the region of the right suprarenal area measuring 4.2 $\times$ 2.5 cm. We proceeded with computed tomography (CT) of the abdomen, and it revealed a well-defined tumor originating from the right adrenal gland that was 3.3 $\times$ 3.4 cm in size; the tumor, exerted pressure on the hepatic vein without evidence of regional adenopathies or infiltration of surrounding tissues. Contrast-enhanced CT showed moderate enhancement with irregular non-enhanced areas within, suggesting malignancy (Figure 1). A positron emission tomography/computed tomography (PET/CT) scan with  $^{18}\text{F}$ -FDG was performed, which revealed an exclusive and high uptake in the right adrenal tumor lesion.

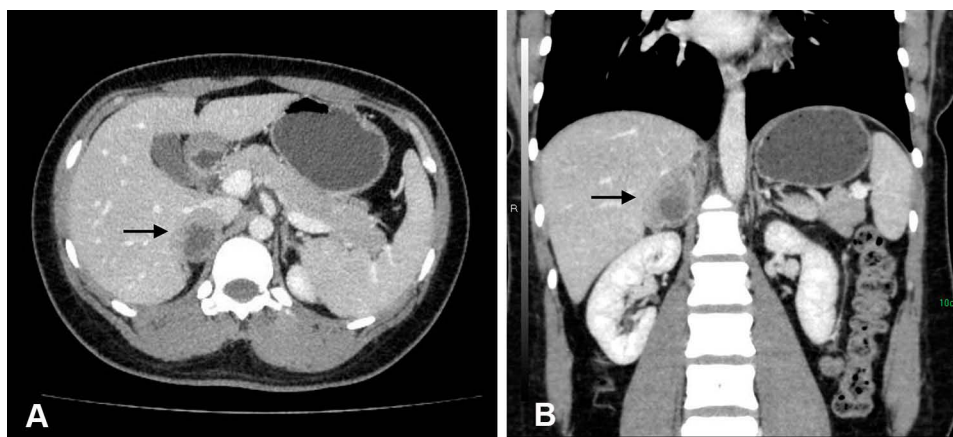
A right adrenalectomy was scheduled and performed uneventfully. Intraoperatively, we found a solid mass that almost completely replaced the right adrenal gland adherent to the posterior wall of the inferior vena cava (IVC). We explored the IVC and adjacent organs, and no tumor invasion was detected. Tissue margins were negative. Postoperatively her vital signs remained stable and as there were no complications. No adjuvant therapy and

other medication was given, and the patient was discharged 2 days after surgery. Currently, she is alive and doing well, without evidence of recurrence or distant metastasis at the 12-month follow-up.

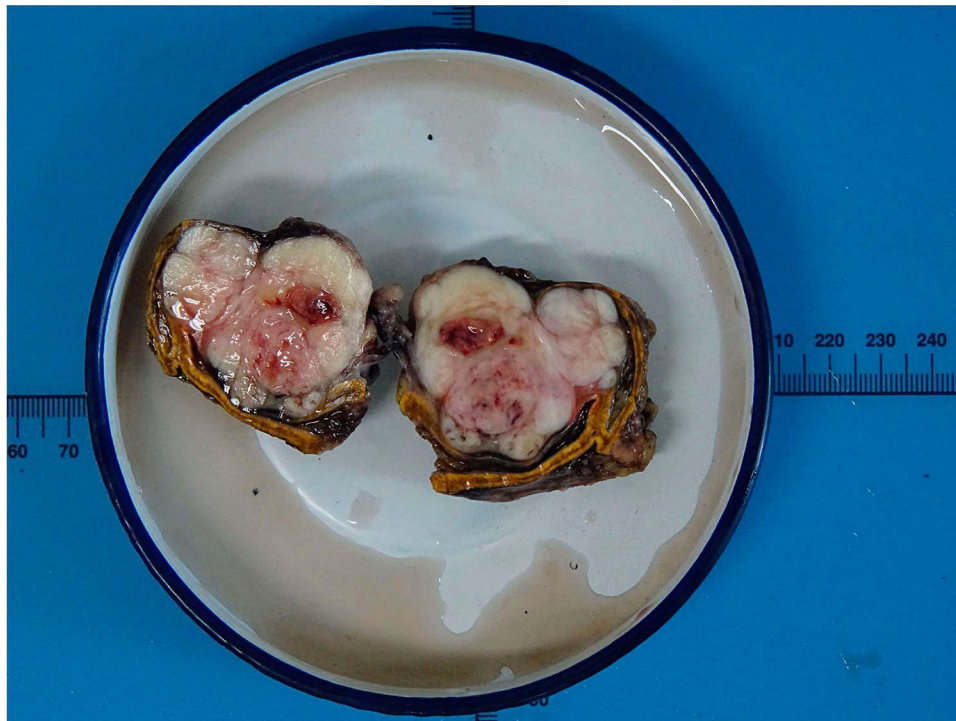
Gross pathological examination showed a well-circumscribed and partially encapsulated solid tumor weighing 37.5 g and measuring 5.5 $\times$ 5 $\times$ 3.2 cm in maximum dimension. The cut surface was nodular and grayish white in color with few mucoidal, hemorrhagic and necrotic areas. The normal adrenal gland was displaced by the tumor and presented at the edge of the tumor (Figure 2). Microscopically, the adrenal gland was compressed, but not invaded by the spindle cell tumor, which was arranged in interlacing fascicles (Figure 3A). Tumor cells were elongated with eosinophilic fibrillary cytoplasm with marked pleomorphism of the nuclei, with up to 8–10 mitoses/10 high power fields (Figure 3B). No infiltrated lymph nodes were found. An immunohistochemical examination showed positive staining for SMA, desmin (Figure 3C), vimentin, and H-caldesmon (Figure 3D), and negative staining for S-100, CD 117, Dog-1, ER and PR. The Ki-67 proliferation index was approximately 40% in the hot spot. Based on these data, the final diagnosis was confirmed as a primary adrenal leiomyosarcoma.

## Discussion

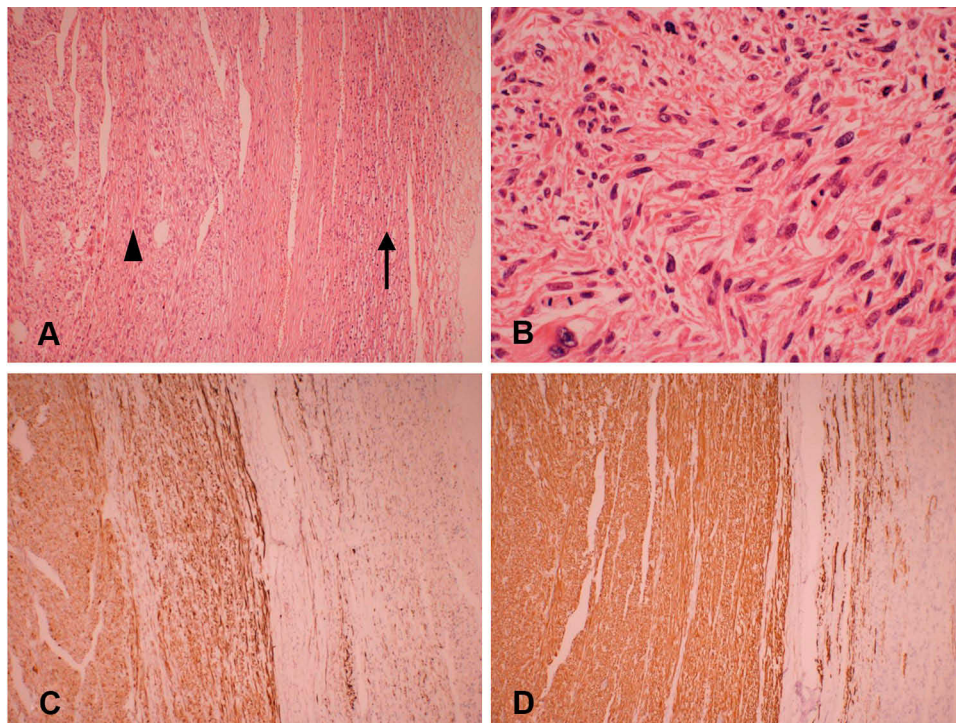
PAL is an extremely rare nonfunctional mesenchymal tumor, and to the best of our knowledge, there have only been 39 previously published cases of PAL in English-language literature. The clinicopathologic characteristics of these cases are summarized in Table 1. PAL is mostly found in middle-aged adults. The age at first diagnosis ranges from 14 to 79 years, with a mean of 54.2 years.



**Figure 1** Preoperative abdominal contrast-enhanced CT scan showed a well-circumscribed heterogeneously mass in the right suprarenal areal (arrow). (A) Axial sections and (B) coronal sections.



**Figure 2** Macroscopic features of the tumor showed a well-circumscribed and partially encapsulated solid tumor measuring 5.5×5×3.2 cm in maximum dimension. The normal adrenal gland was displaced by the tumor and presented at the edge of the tumor.



**Figure 3** Microscopic details of the tumor. (A) The interlacing bundle and fascicles of the tumor (arrowhead) and compressed adrenal tissue (arrow). (H&E, × 100). (B) Leiomyosarcoma with nuclear pleomorphism and giant cell formation with mitotic activity in the range of 8–10 mitoses/10 high power fields (H&E, × 400). (C) Immunohistochemical staining for desmin is positive (× 100). (D) Immunohistochemical examinations showed strong immunoreactivity for H-caldesmon (× 100).

**Table 1** Clinicopathologic Characteristics of Primary Adrenal Leiomyosarcoma

Author, Year	Age, y/Sex	Presentation	Side	Size (cm)	Treatment	Outcome (months)	Extension	Pathologic Characteristics of Known Cases of PAL in the Literature
Our case	29/F	Incidental finding	R	5.5	Adx	12m AWOD	None	Pleomorphic+ SMA/desmin/vimentin/H-caldesmon+
Sakellariou M et al, 2020 <sup>26</sup>	62/M	Incidental finding	L	13	Adx; RT+CT	31m, alive with bone, lung and liver metastasis	None (preoperative); bone metastasis (postoperative after 3 months)	SMA/desmin+
Nerli RB et al, 2019 <sup>27</sup>	27/M	Back pain	L	9	Adx	N/D	None	Desmin/H-caldesmon+
Doppalapudi SK et al, 2019 <sup>6</sup>	70/M	Abdominal varices+EBLE	R	9	Adx + Nx+ thrombectomy+ cavotomy	14m, deceased	IVC (preoperative); lung metastasis (postoperative after 12 months)	SMA/desmin/vimentin/H-caldesmon+
Mulani SR et al, 2018 <sup>28</sup>	50/M	Abdominal pain + weight loss	L	8.1	CT+RT	N/D	Liver and lung metastasis	Pleomorphic+ desmin +
Onishi T et al, 2016 <sup>29</sup>	34/M	Flank pain	R	5.2	Adx+ Nx+ Ldx+ partial hepatic lobectomy	10m AWOD	IVC+AO	Pleomorphic+ SMA+
Zhou Y et al, 2015 <sup>24</sup>	49/F	Abdominal pain+ back pain	L	8	Adx	6m AWOD	None	SMA/desmin/vimentin+
Quildrian S et al, 2015 <sup>30</sup>	44/F	Abdominal pain	R	12	Adx	36m, AWOD	None	Pleomorphic+ SMA/desmin/vimentin/H-caldesmon/HHF+
Nagaraj V et al, 2015 <sup>31</sup>	61/M	Flank pain	L	17	Adx	N/D	None	Pleomorphic+ desmin/vimentin+
Wei J et al, 2014 <sup>32</sup>	57/F	Incidental finding	L	8	Adx; tumor resection +CT	29m, AWOD	None (preoperative); recurrence (postoperative after 17 months)	Pleomorphic+ SMA/desmin/vimentin+
Oztürk H et al, 2014 <sup>33</sup>	70/F	Flank pain	R	7.8	Adx+ cavotomy	6m, metastasis	IVC	Pleomorphic+ SMA/desmin +
Lee S et al, 2014 <sup>34</sup>	28/M	Flank pain +weight loss	R	15	Adx	18m, AWOD	None	Pleomorphic+ SMA/desmin +
Gulpinar MT et al, 2014 <sup>35</sup>	48/M	Frequent urination	R	11	Adx	8m, AWOD	None	SMA/vimentin+
Bhalla A et al, 2014 <sup>36</sup>	45/M	Back and groin pain+weight loss	R	11	CT	9m, metastasis	Liver metastasis	SMA/desmin+
Alam MM et al, 2014 <sup>37</sup>	35/F	Flank pain	L	8.5	Adx	N/D	None	ND

(Continued)

Table 1 (Continued).

Author, Year	Age, y/Sex	Presentation	Side	Size (cm)	Treatment	Outcome (months)	Extension	Pathologic Characteristics of Known Cases of PAL in the Literature
Deshmukh SD et al, 2013 <sup>17</sup>	60/F	Flank pain	L	5.2	Adx	21m, AWOD	None	Pleomorphic+ SMA/desmin/vimentin+
Shao IH et al, 2012 <sup>38</sup>	66/M	Abdominal fullness + nausea	L	9.5	Adx + thrombectomy	18m, AWOD	Renal vein	SMA/desmin +
Karaosmanoglu AD et al, 2010 <sup>39</sup>	63/M	Abdominal pain+EBLE	R	N/D	CT	3m, deceased	IVC	Desmin/vimentin/actin +
Kanthan R et al, 2012 <sup>40</sup>	28/F	Abdominal pain	L	16.5	Adx+Nx+partial diaphragmatic resection	N/D	None	Pleomorphic+ SMA/vimentin+; desmin-
Liu SV et al, 2012 <sup>7</sup>	79/F	Subcostal pain	L	6.3	Adx	12m, AWOD	N/D	N/D
Van Laarhoven HWM et al, 2009 <sup>41</sup>	78/M	Hemithorax pain	L	N/D	CT+RT	11 days, deceased	Multiple metastases	SMA/vimentin/actin+
Hamada S et al, 2009 <sup>4</sup>	62/F	Flank pain	B	R(8) L(4)	Bil Adx+CT+RFA+RT	16m, deceased	None (preoperative); multiple metastasis (postoperative)	SMA+
Mencoboni et al, 2008 <sup>22</sup>	75/F	Abdominal pain+ loin pain.	R	8	Adx	12m, AWOD	N/D	Pleomorphic+ SMA/desmin/actin+
Goto J et al, 2008 <sup>20</sup>	73/F	Flank pain +progressive hypertension	R	8	Adx+Nx+cavotomy	10m, AWOD	AO	SMA/NSE +
Wang TS et al, 2007 <sup>8</sup>	64/F	Non-productive cough+ EBLE	R	14.2	Adx+thrombectomy +cavotomy	10m, AWOD	IVC, right atrium	SMA/desmin+
Mohanty SK et al, 2007 <sup>18</sup>	47/F	Flank pain	L	10	Adx+Nx+RT	9m, alive with lung and liver metastasis	None (preoperative); lung and liver metastasis (postoperative after 9 months)	Pleomorphic+SMA/desmin/H-calponin/actin+
Lee CW et al, 2006 <sup>42</sup>	49/M	Flank pain	L	3	Adx	10m, AWOD	None	Desmin+
Wong C et al, 2005 <sup>9</sup>	57/M	Groin pain +cold feet	L	N/D	Adx+partial Nx+thrombectomy	6m, recurrence, deceased	IVC, iliac veins and right atrium	N/D
Candanedo-González FA, 2005 <sup>43</sup>	59/F	Flank pain +weight loss	L	16	Adx	24m, AWOD	None (preoperative); recurrence and liver metastasis (postoperative after 12 months)	Pleomorphic+desmin/vimentin/actin+

(Continued)

Table 1 (Continued).

Author, Year	Age, y/Sex	Presentation	Side	Size (cm)	Treatment	Outcome (months)	Extension	Pathologic Characteristics of Known Cases of PAL in the Literature
Linos D et al, 2004 <sup>5</sup>	14/F	Incidental finding	B	R (3.5) L(4)	Bilateral Adx	14m, AWOD	None	SMA/vimentin/actin/HHF35+
Kato T et al, 2004 <sup>44</sup>	59/M	Flank pain +back pain.	L	10	Adx+Nx +thrombectomy+RT	6m, deceased	IVC+renal vein (preoperative); bone and liver (postoperative after 1 month)	Pleomorphic+ SMA/desmin/vimentin+
Thamboo TP et al, 2003 <sup>21</sup>	68/F	Loin pain +fever	R	12.5	Adx+Nx	12m, AWOD	None	Pleomorphic+ SMA/desmin/vimentin/actin+
Lujan MG et al, 2003 <sup>23</sup>	63/M	Enlarging RUQ mass	R	25	Preoperative CT+Adx +Nx+partial hepatic lobectomy+cholecystectomy	Deceased shortly after surgery	Invaded AO+lung metastasis	Pleomorphic+ desmin/vimentin/H-calponin +; SMA/actin -
Matsui Y et al, 2002 <sup>11</sup>	61/F	Flank pain +fever	R	N/D	Adx+Nx +thrombectomy	1m, deceased	AO+IVC+right atrium	SMA+
Etten B et al 2001 <sup>10</sup>	73/F	EBLE +abdominal pain	R	27	Palliative + supportive care	3 weeks, deceased	IVC+AO	SMA+
Boman F et al, 1997 <sup>45</sup>	29/M	Autopsy	L	0.8	None	N/D	None	SMA/HHF35+
Zetler PJ et al, 1995 <sup>46</sup>	30/M	Abdominal pain	L	11	Adx	20m, AWOD	None	Pleomorphic+ SMA/actin+
Hayashi J et al, 1995 <sup>47</sup>	55/F	Abdominal pain+fever	R	N/D	Adx+Nx	52m, AWOD	IVC+right atrium+hepatic vein	N/D
Lack EE et al, 1991 <sup>19</sup>	49/M	Flank pain	R	11	Adx+Nx; CT+RT	9m, alive with bone metastases	None (preoperative); bone (postoperative after 3 months)	Pleomorphic+ SMA/vimentin/actin+
Choi SH et al, 1981 <sup>48</sup>	50/F	Flank pain	L	16	Adx+partial Nx	12m, AWOD	None	N/D

**Abbreviations:** Adx, adrenalectomy; AO, adjacent organ; AWOD, alive without disease; CT, chemotherapy; EBLE, edema in both lower extremities; IVC, inferior vena cava; Lymx, lymphadenectomy; NSE, neuron-specific enolase; Nx, nephrectomy; N/D, not disclosed; PAL, primary adrenal leiomyosarcoma; RFA, radiofrequency ablation; RT, radiation therapy; RUQ, right upper quadrant; SMA, smooth muscle actin.

Of these patients, 77.5% have been  $\geq 40$  years of age. PAL is evenly distributed between the sexes with cases involving 21 women and 19 men. In addition, there does not appear to be any laterality preference, as right-sided and left-sided tumors occur with similar frequency. There have only been two cases of bilateral lesions,<sup>4,5</sup> but it is not known whether the bilateral tumors were both primary or if one had metastasized to the other adrenal gland.

Symptoms are mainly secondary to the mass effect of the tumor and local invasion. The most common presenting symptom is flank pain or abdominal pain in approximately 64% of patients. If the tumor extends into the IVC or the large tumor compresses the IVC, patients may present with IVC involvement, and experience obstructive symptoms such as lower extremity edema, spider angiomas, abdominal varices, and even altered sensation in the lower limbs.<sup>6-10</sup>

In a rarely case, the tumor ruptured suddenly, and the patient presented with severe and acute abdominal pain.<sup>11</sup> Because tumors are located in the retroperitoneum, and are often nonfunctional, they often grow to large sizes prior to noticeable symptoms. The size of the PAL at presentation has ranged from 0.8 to 27 cm (mean, 10.2 cm), with 78.4% of tumors larger than 6 cm.

Adrenal masses detected incidentally during radiological investigations account for 4%.<sup>12</sup> Although there are no definite features that can be used to diagnose PAL, imaging examination is useful for identifying the tumor size, location and metastasis, and evaluating its extent in relation to its surrounding structures, as well as distinguishing between potentially benign and malignant lesions. In a series of 705 patients with adrenal incidentalomas, it was demonstrated that unenhanced CT attenuation >10 and size greater than 7 cm had a high sensitivity for malignancy.<sup>13</sup> There is a growing consensus, however, that the size should not be used to differentiate malignant from benign adrenal tumor. Modern imaging techniques such as magnetic resonance imaging (MRI) and <sup>18</sup>F-FDG-PET represent the state of the art in adrenal imaging, which have greater sensitivity and specificity in establishing malignant versus benign diagnosis. MRI provides a more precise estimation than CT in the detection of the tumor origin and location to local structures due to its high-quality soft tissue resolution. Generally speaking, malignant masses are denser than benign masses, and often appear hyperintense on T2-weighted images on account of their higher fluid content.<sup>14</sup> Multiplanar postcontrast imaging is also useful to evaluate the extent of vascular involvement and to distinguish tumor from bland thrombus.<sup>15</sup> Evaluation using FDG-PET has a high sensitivity for detecting malignancy; increased FDG accumulation can be seen in all cases of PAL that performed FDG-PET. Hamada et al reported that the metastasis was detected by PET before it was found by CT.<sup>4</sup> A core biopsy may be performed with radiological or ultrasound assistance prior to surgical resection. The current guidelines for the management of adrenal tumors recommend that the tumor should be confirmed to be hormonally inactive (in particular, a pheochromocytoma has been ruled out) prior to biopsy.<sup>16</sup> In addition, nonfunctional primary adrenal cortical carcinoma should also be considered as a differential diagnosis prior to an adrenal biopsy because tumor seeding can take place.

There is currently no tumor marker or imaging that can aid to distinguish PAL nodules from other adrenal nodules nor is there an identified characteristic genetic rearrangement or specific endocrinological change associated with

this neoplasm. The diagnosis of PAL is still completely dependent on histological and immunohistological evaluations after surgery. Histologically, retroperitoneal smooth muscle tumors containing 5 or more mitoses per 50 high power fields are classified as malignant. The presence of tumor cell necrosis is also strongly suggestive of malignancy.<sup>17</sup> The typical histologic features of leiomyosarcomas include intersecting, sharply marginated fascicles of spindle cells with abundant eosinophilic cytoplasm and elongated and hyperchromatic nuclei. In many cases, coagulative necrosis and hemorrhage are common features. Varying degrees of nuclear hyperchromasia and pleomorphism usually manifest.<sup>15</sup> Pleomorphic leiomyosarcomas that resemble any undifferentiated soft tissue sarcomas show moderate-to-high anaplasia as in the index cases and need a panel of immunohistochemical stains to arrive at a definitive diagnosis.<sup>18</sup> Pleiomorphic subtypes are not uncommon with 18 known cases (45%). Some cases did not reveal pleiomorphism, but prominent atypical nuclei and bizarre giant cells were described. This implies that leiomyosarcoma should be considered in the cases of an adrenal mass with malignant spindle and pleomorphic cells; however, poor prognosis is not necessarily indicated with tumors with bizarre giant and pleomorphic cells.

Tumor cells are widely presumed to arise from the smooth muscle wall of the inferior vena cava, central adrenal vein, and its branches.<sup>19</sup> Direct infiltration of leiomyosarcoma cells was not observed microscopically in adjacent adrenal tissue in five cases. Some findings revealed that the tumor was surrounded by a thin rim of fibrous tissue and bordered the grossly identifiable adrenal gland. Therefore, we can further confirm that leiomyosarcoma most likely arises from adrenal blood vessels but not the adrenal gland.<sup>8,20,21</sup>

Immunohistochemistry is an extremely useful tool not only for determining tumor type, but also for differentiating leiomyosarcomas from other tumors (including melanoma, rhabdomyosarcoma, mesotheliomas and other sarcomas). Conventional leiomyosarcomas show strong reactivity for smooth muscle markers such as smooth muscle actin and/or muscle specific actin in 90–95% of cases and desmin in 70–90% of cases.<sup>17</sup> However, due to the lack of such detection in many cases of PAL, we cannot obtain reliable statistical data.

Surgical resection with wide negative margins constitutes the predominant mode of therapy,<sup>16</sup> and has the greatest impact on survival. Since tumors are typically large at diagnosis and likely to invade the IVC, it is important to carefully resect any possibly involved tissue.

It is worth noting that some patients develop pulmonary embolism after surgery, so we should strengthen this aspect of care for patients.<sup>8,22</sup>

The role of chemotherapy or radiation is not well defined. Although some reports suggested that radiation therapy could alleviate symptoms for patients with metastasis and ensure improved local control,<sup>2</sup> the sensitivity was generally poor. Kato T et al<sup>21</sup> performed palliative radiation therapy for the patient with cervical spine metastasis, but it showed almost no effect. Systemic chemotherapy may delay local recurrence if given as adjuvant/neoadjuvant treatment, but there are lack of randomized trial data indicating a survival benefit for patients.<sup>2</sup> In one case reported by Lujan MG et al,<sup>23</sup> the patient received preoperative chemotherapy, resulting in considerable reduction of the size of the lung mass; however, the adrenal mass continued to grow.

Given the rarity of the tumor, assessment of its prognosis remains difficult, but venous thrombosis, adjacent organ invasion and distant metastases were proposed to be predictors of an unfavorable outcome.<sup>7,24</sup> A prospective study suggested that 55% of patients with leiomyosarcomas of somatic soft tissues developed metastasis or died within 3 years.<sup>25</sup> We found that of the 40 patients, 7 died within six months. Because only limited clinical data are currently available on PAL, our data offer some important information on the clinical and therapeutic aspects of this rare disorder to increase clinician vigilance.

## Conclusion

In conclusion, PAL is a rare mesenchymal neoplasm that most likely arises from the IVC, central adrenal vein and its branches. The tumors may grow to large sizes before incidental detection at imaging or palpation. Patients presenting with symptoms from these tumors might have large tumors that have invaded adjacent structures or extended into the IVC. Diagnosis in an advanced stage contributes to a poor prognosis. Surgical resection with clear margins remains the mainstay of treatment.

## Ethical Approval

This study was approved by the ethics committee of the First Hospital of Jilin University (Changchun, People's Republic of China), and was permitted to be published. Written informed consent to have the case details and accompanying images published was obtained from the patient. All clinical investigations were conducted in accordance with the principles expressed in the Declaration of Helsinki.

## Acknowledgments

Dr. Yuanyuan Wang and Dr. Yongliang Teng are co-first authors for this study.

## Disclosure

The authors declared no conflicts of interest.

## References

- Serrano C, George S. Leiomyosarcoma. *Hematol Oncol Clin North Am.* 2013;27(5):957–974. doi:10.1016/j.hoc.2013.07.002
- Bathan AJ, Constantinidou A, Pollack SM, Jones RL. Diagnosis, prognosis, and management of leiomyosarcoma: recognition of anatomic variants. *Curr Opin Oncol.* 2013;25(4):384–389. doi:10.1097/CCO.0b013e3283622c77
- Mankin HJ, Casas-Ganem J, Kim JI, Gebhardt MC, Hornicek FJ, Zeegen EN. Leiomyosarcoma of somatic soft tissues. *Clin Orthop Relat Res.* 2004;421(421):225–231. doi:10.1097/01.blo.0000119250.08614.82
- Hamada S, Ito K, Tobe M, et al. Bilateral adrenal leiomyosarcoma treated with multiple local therapies. *Int J Clin Oncol.* 2009;14(4):356–360. doi:10.1007/s10147-008-0844-5
- Linou D, Kiriakopoulos AC, Tsakayannis DE, Theodoridou M, Chrousos G. Laparoscopic excision of bilateral primary adrenal leiomyosarcomas in a 14-year-old girl with acquired immunodeficiency syndrome (AIDS). *Surgery.* 2004;136(5):1098–1100. doi:10.1016/j.surg.2003.07.007
- Doppalapudi SK, Shah T, Fitzhugh VA, Bargman V. Primary adrenal leiomyosarcoma with inferior vena cava extension in a 70-year-old man. *BMJ Case Rep.* 2019;12(3):e227670. doi:10.1136/bcr-2018-227670
- Karaosmanoglu AD, Gee MS. Sonographic findings of an adrenal leiomyosarcoma. *J Ultrasound Med.* 2010;29(9):1369–1373. doi:10.7863/jum.2010.29.9.1369
- Wang TS, Ocal IT, Salem RR, Elefteriades J, Sosa JA. Leiomyosarcoma of the adrenal vein: a novel approach to surgical resection. *World J Surg Oncol.* 2007;5(1):109. doi:10.1186/1477-7819-5-109
- Wong C, Von Oppell UO, Scott-Coombes D. Cold feet from adrenal leiomyosarcoma. *J R Soc Med.* 2005;98(9):418–420. doi:10.1177/014107680509800910
- Etten B, van Ijken MG, Mooi WJ, Oudkerk M, van Geel AN. Primary leiomyosarcoma of the adrenal gland. *Sarcoma.* 2001;5(2):95–99. doi:10.1155/S1357714X01000184
- Matsui Y, Fujikawa K, Oka H, Fukuzawa S, Takeuchi H. Adrenal leiomyosarcoma extending into the right atrium. *Int J Urol.* 2002;9(1):54–56. doi:10.1046/j.1442-2042.2002.00413.x
- Muscogiuri G, De Martino MC, Negri M, et al. Adrenal mass: insight into pathogenesis and a common link with insulin resistance. *Endocrinology.* 2017;158(6):1527–1532. doi:10.1210/en.2016-1804
- Íñiguez-Ariza NM, Kohlenberg JD, Delivanis DA, et al. Clinical, biochemical, and radiological characteristics of a single-center retrospective cohort of 705 large adrenal tumors. *Mayo Clin Proc.* 2018;2(1):30–39.
- Mansmann G, Lau J, Balk E, Rothberg M, Miyachi Y, Bornstein SR. The clinically inapparent adrenal mass: update in diagnosis and management. *Endocr Rev.* 2004;25(2):309–340. doi:10.1210/er.2002-0031
- Marko J, Wolfman DJ. Retroperitoneal leiomyosarcoma from the radiologic pathology archives. *Radiographics.* 2018;38(5):1403–1420. doi:10.1148/rg.2018180006
- Fassnacht M, Arlt W, Bancos I, et al. Management of adrenal incidentalomas: European society of endocrinology clinical practice guideline in collaboration with the European network for the study of adrenal tumors. *Eur J Endocrinol.* 2016;175(2):G1–G34. doi:10.1530/EJE-16-0467



17. Deshmukh SD, Babanagare SV, Anand M, Pande DP, Yavalkar P. Primary adrenal leiomyosarcoma: a case report with immunohistochemical study and review of literature. *J Cancer Res Ther.* 2013;9(1):114–116. doi:10.4103/0973-1482.110394
18. Mohanty SK, Balani JP, Parvani AV. Pleomorphic leiomyosarcoma of the adrenal gland: case report and review of the literature. *Urology.* 2007;70(3):591.e595. doi:10.1016/j.urology.2007.07.029
19. Lack EE, Graham CW, Azumi N, et al. Primary leiomyosarcoma of adrenal gland. Case report with immunohistochemical and ultrastructural study. *Am J Surg Pathol.* 1991;15(9):899–905. doi:10.1097/00000478-199109000-00011
20. Goto J, Otsuka F, Kodera R, et al. A rare tumor in the adrenal region: neuron-specific enolase (NSE)-producing leiomyosarcoma in an elderly hypertensive patient. *Endocr J.* 2008;55(1):175–181. doi:10.1507/endocrj.K07E-020
21. Thamboo TP, Liew LCH, Raju GC. Adrenal leiomyosarcoma: a case report and literature review. *Pathology.* 2003;35(1):47–49.
22. Mencoboni M, Bergaglio M, Truini M, Varaldo M. Primary adrenal leiomyosarcoma: a case report and literature review. *Clin Med Oncol.* 2008;2(353–356):CMO–S627.
23. Lujan MG, Hoang MP. Pleomorphic leiomyosarcoma of the adrenal gland. *Arch Pathol Lab Med.* 2003;127(1):e32–e35.
24. Zhou Y, Tang Y, Tang J, Deng F, Gong G, Dai Y. Primary adrenal leiomyosarcoma: a case report and review of literature. *Int J Clin Exp Pathol.* 2015;8(4):4258–4263.
25. Farshid G, Pradhan M, Goldblum J, Weiss SW. Leiomyosarcoma of Somatic Soft Tissues. *Am J Surg Pathol.* 2002;26(1):14–24. doi:10.1097/00000478-200201000-00002
26. Sakellariou M, Dellaportas D, Grapsa E, et al. Primary adrenal leiomyosarcoma: a case report. *Mol Clin Oncol.* 2020. doi:10.3892/mco.2020.1987
27. Nerli RB, Ghagane S, Dixit NS, Hiremath MB, Deole S. Adrenal leiomyosarcoma in a young adult male. *Int Cancer Conf J.* 2020;9(1):14–17.
28. Mulani SR, Stoner P, Schlachterman A, Ghayee HK, Lu L, Gupte A. First reported case of endoscopic ultrasound-guided core biopsy yielding diagnosis of primary adrenal leiomyosarcoma. *Case Rep Gastrointest Med.* 2018;2018:8196051. doi:10.1155/2018/8196051
29. Onishi T, Yanagihara Y, Kikugawa T, et al. Primary adrenal leiomyosarcoma with lymph node metastasis: a case report. *World J Surg Oncol.* 2016;14(1):176. doi:10.1186/s12957-016-0936-z
30. Quidrian S, Califano I, Carrizo F, Daffinoti A, Calónico N. Primary adrenal leiomyosarcoma treated by laparoscopic adrenalectomy. *Endocrinol Nutr.* 2015;62(9):472–473. doi:10.1016/j.endonu.2015.05.008
31. Nagaraj V, Mustafa M, Amin E, Ali W, Naji Sarsam S, Darwish A. Primary adrenal leiomyosarcoma in an arab male: a rare case report with immunohistochemistry study. *Case Rep Surg.* 2015;2015:702541. doi:10.1155/2015/702541
32. Wei J, Sun A, Tao J, Wang C, Liu F. Primary adrenal leiomyosarcoma: case report and review of the literature. *Int J Surg Pathol.* 2014;22(8):722–726. doi:10.1177/1066896914526777
33. Oztürk H. Vena cava invasion by adrenal leiomyosarcoma. *Rare Tumors.* 2014;6(2):5275. doi:10.4081/rt.2014.5275
34. Lee S, Tanawit GDC, Lopez RA, Zamuco JT, Cheng BGG, Siozon MV. Primary leiomyosarcoma of adrenal gland with tissue eosinophilic infiltration. *Korean J Pathol.* 2014;48(6):423–425. doi:10.4132/KoreanJPathol.2014.48.6.423
35. Gulpinar MT, Yildirim A, Gucluer B, et al. Primary leiomyosarcoma of the adrenal gland: a case report with immunohistochemical study and literature review. *Case Rep Urol.* 2014;2014:489630. doi:10.1155/2014/489630
36. Bhalla A, Sandhu F, Sieber S. Primary adrenal leiomyosarcoma: a case report and review of the literature. *Conn Med.* 2014;78(7):403–407.
37. Alam MM, Naser MF, Islam MF, Rahman MA. Primary adrenal leiomyosarcoma in an adult female. *Mymensingh Med J.* 2014;23(2):380–383.
38. Shao IH, Lee W-C, Chen T-D, Chiang Y-J. Leiomyosarcoma of the adrenal vein. *Chang Gung Med J.* 2012;35(5):428–431. doi:10.4103/2319-4170.105475
39. Liu SV, Lenkiewicz E, Evers L, et al. Genomic analysis and selected molecular pathways in rare cancers. *Phys Biol.* 2012;9(6):065004. doi:10.1088/1478-3975/9/6/065004
40. Kanthan R, Senger J-L, Kanthan S. Three uncommon adrenal incidentalomas: a 13-year surgical pathology review. *World J Surg Oncol.* 2012;10(1):64. doi:10.1186/1477-7819-10-64
41. Van Laarhoven HWM, Vinken M, Mus R, Flucke U, Oyen WJG, Van der Graaf WT. The diagnostic hurdle of an elderly male with bone pain: how 18F-FDG-PET led to diagnosis of a leiomyosarcoma of the adrenal gland. *Anticancer Res.* 2009;29(2):469–472.
42. Lee CW, Tsang YM, Liu KL. Primary adrenal leiomyosarcoma. *Abdom Imaging.* 2006;31(1):123–124. doi:10.1007/s00261-005-0343-3
43. Candanedo-González FA, Vela Chávez T, Cébulo-Vázquez A. Pleomorphic leiomyosarcoma of the adrenal gland with osteoclast-like giant cells. *Endocr Pathol.* 2005;16(1):75–81. doi:10.1385/EP:16:1:075
44. Kato T, Kato T, Sakamoto S, et al. Primary adrenal leiomyosarcoma with inferior vena cava thrombosis. *Int J Clin Oncol.* 2004;9(3):189–192. doi:10.1007/s10147-004-0383-7
45. Boman F, Gultekin H, Dickman PS. Latent Epstein-Barr virus infection demonstrated in low-grade leiomyosarcomas of adults with acquired immunodeficiency syndrome, but not in adjacent Kaposi's lesion or smooth muscle tumors in immunocompetent patients. *Arch Pathol Lab Med.* 1997;121(8):834–838.
46. Zetler PJ, Filipenko JD, Bilbey JH, Schmidt N. Primary adrenal leiomyosarcoma in a man with acquired immunodeficiency syndrome (AIDS). Further evidence for an increase in smooth muscle tumors related to Epstein-Barr infection in AIDS. *Arch Pathol Lab Med.* 1995;119(12):1164–1167.
47. Hayashi J, Ohzeki H, Tsuchida S, et al. Surgery for cavoatrial extension of malignant tumors. *Thorac Cardiovasc Surg.* 1995;43(3):161–164. doi:10.1055/s-2007-1013791
48. Choi SH, Liu K. Leiomyosarcoma of the adrenal gland and its angiographic features: a case report. *J Surg Oncol.* 1981;16(2):145–148. doi:10.1002/jso.2930160205

## OncoTargets and Therapy

### Publish your work in this journal

OncoTargets and Therapy is an international, peer-reviewed, open access journal focusing on the pathological basis of all cancers, potential targets for therapy and treatment protocols employed to improve the management of cancer patients. The journal also focuses on the impact of management programs and new therapeutic

agents and protocols on patient perspectives such as quality of life, adherence and satisfaction. The manuscript management system is completely online and includes a very quick and fair peer-review system, which is all easy to use. Visit <http://www.dovepress.com/testimonials.php> to read real quotes from published authors.

Submit your manuscript here: <https://www.dovepress.com/oncotargets-and-therapy-journal>

Dovepress