

# Treatment Outcomes and Associated Factors in Hospitalised Children with Severe Acute Malnutrition: A Prospective Cohort Study

This article was published in the following Dove Press journal:  
*Pediatric Health, Medicine and Therapeutics*

Fuad Adem<sup>1</sup>  
Dumessa Edessa<sup>1</sup>  
Bodena Bayissa<sup>2</sup>  
Mesud Mohammed Hassen<sup>3</sup>  
Mohammed A Mohammed<sup>4</sup>

<sup>1</sup>Department of Clinical Pharmacy, School of Pharmacy, Haramaya University, Oromia, Ethiopia; <sup>2</sup>Jimma University, School of Pharmacy, Jimma, Ethiopia; <sup>3</sup>Madda-Walabu University, School of Medicine and Health Sciences, Madda-Walabu, Ethiopia; <sup>4</sup>University of Auckland, School of Pharmacy, Auckland, New Zealand

**Background:** Malnutrition continues to be a public health challenge in sub-Saharan African countries. In Ethiopia, there is a paucity of data regarding factors affecting treatment outcomes in children with severe acute malnutrition (SAM).

**Methods:** A prospective cohort study was conducted among children aged 6 to 59 months with SAM, receiving care at Jimma University Medical center, Ethiopia. Bivariate and multivariate analyses were computed to determine factors associated with treatment outcomes. Kaplan–Meier survival analysis, life-table analysis, and Log rank test were used to determine death rates, estimate the proportion of surviving, and compare time to recovery (nutritional cure).

**Results:** A total of 133 children were included in this study and 79.7% had medical comorbidities. Overall, nutritional recovery, death, and default rates were 25.6%, 3.8%, and 7.6%, respectively. There was no significant difference in the nutritional recovery rate (26.1% versus 25.4%;  $p=0.4$ ) and the median time to recovery between children who had diarrhea at admission (26 days; 95% CI: 24.0–28.7) and those who had not (26.0 days; 95% CI: 21.90–30.10). Likewise, the average daily weight gain was not significantly different between the two groups (6.34 g/kg/day versus 7.76g/kg/day,  $p=0.4$ ). Having diagnosed with tuberculosis (Adjusted Hazard Ratio (AHR)=0.19, CI 0.06–0.62) and anemia (AHR =0.32, CI 0.14–0.74) and treatment failures (AHR=0.17, CI, 0.16–0.03) were predicting factors for time to recovery.

**Conclusion:** The recovery rate and average daily weight gain were found to be sub-optimal in the study population. However, the median time to recovery was within the national recommendation. There was no significant difference in the recovery rate and time to recovery between the two groups. Treatment failures and the presence of tuberculosis and anemia were indicators for prolonged stabilization phase and time to achieve nutritional cure. Optimal average daily weight gain and clinical management of comorbidities may enhance early recovery in hospitalised children with SAM.

**Keywords:** severe acute malnutrition, treatment outcome, survival status, hospital-based care, prospective cohort

## Introduction

Malnutrition is a state in which the nutritional status of person is suboptimal and thereby health and growth may be impaired. It may be caused by an illness that impairs nutritional intake and metabolism, inadequate intake of macronutrients/micronutrients.<sup>1,2</sup> Acute malnutrition or wasting is a form of undernutrition which is defined as low weight for height (WFH) or the presence of nutritional edema.<sup>1</sup>

Correspondence: Fuad Adem  
Email fuadamoh2017@gmail.com

Acute malnutrition (AM) can be moderate acute malnutrition (MAM) or severe acute malnutrition (SAM) based on its severity. Worldwide, acute malnutrition affects about 8% (52 million) of under-five children and it is responsible for about 4.4% of nutrition-related under-five mortality.<sup>2,3</sup>

SAM is a nutritional emergency characterized by the presence of weight-for-height (WFH)  $Z$  score  $< -3$ , mid-upper arm circumference (MUAC)  $< 11.5$  cm and bilateral nutritional pedal edema.<sup>3</sup> Globally, SAM affects more than 17 million children causing 2.9 million hospitalisations out of which about 17% of them requiring treatment.<sup>2,4</sup> In Africa, 14 million children under the age of 5 years have acute malnutrition, out of this, SAM accounts for about 4.1 million cases.<sup>2</sup>

In Ethiopia, undernutrition continues to be a major public health problem accounting for more than 50% of under-five mortality.<sup>5</sup> According to the Ethiopian Demographic and Health Survey (EDHS) data,<sup>6</sup> there has been some reduction in the prevalence of chronic malnutrition (stunting) over the past two decades (ie, 57.8% in 2000, 44.4% in 2011, and 40% in 2014). Similarly, a modest reduction in the prevalence of AM has been observed (ie, 12.5% in 2000, 9.7% in 2011, and 9.0% in 2014). However, between the years 2014 and 2016, although there has been a further reduction in the prevalence of chronic malnutrition (stunting) from 40% to 38%, a slight increase (from 9% to 10%) in the prevalence of AM has been observed.<sup>7</sup> Previous research studies related to SAM have been focused on analysis of secondary data. Thus, there is a paucity of data from prospective studies regarding factors associated with treatment outcomes in hospitalised children with SAM. Moreover, no such studies have been conducted at Jimma University Medical center, southwest Ethiopia. Therefore, evaluation of nutritional recovery rate and its associated factors in under-five children with SAM receiving care at Jimma University Medical Center (JUMC), Nutritional Rehabilitation Unit (NRU) was deemed vital to generate data that inform evidence-based clinical decision-making to optimize the care of children.

## Methods

### Study Design and Setting

A prospective cohort study was conducted to assess treatment outcomes and associated factors in children with SAM receiving care at Jimma University Medical center, Ethiopia. Jimma University Medical Center is a teaching

and referral hospital with 600-bed capacity in southwest Ethiopia. The hospital yearly provides services for 218,095 outpatients, 166,778 inpatients, 14,207 emergencies and 5973 deliveries from the catchment population of about 15–20 million.

### Selection of Study Subjects

The study subjects for this study were children with SAM who were admitted to the hospital from March to July 2018. Consecutive sampling method was used to select the children for the study. The inclusion criteria we considered involved children/infants aged between 6 and 59 months, children/infants with WFH  $< -3Z$  score or MUAC  $< 11.5$  cm with length  $> 65$  cm at admission, and children who had bilateral nutritional pitting edema with any complication. Infants/children whose parents/guardians decline to consent their child's participation in the study were excluded. The study subjects were divided into two groups based on the presence or absence of diarrhea at hospitalisation, to see the effect of having or not having diarrhea at admission in treating children hospitalised with SAM.

### Data Collection Process

The data were collected using a structured data collection format that consists of sociodemographic variables, nutritional status, anthropometric measurements, laboratory tests, and medical conditions at admission and medical treatment during the study period. Data collection instrument was reviewed and enhanced by one clinical pharmacist and one pediatric resident. The data were collected by four medical interns and two clinical nurses after being given a training on the data collection procedure. The data collectors visited the pediatric ward daily and assessed all the newly admitted children's eligibility for inclusion into the study based on the predefined inclusion criteria. Sociodemographic data and baseline clinical information, vital signs, anthropometry measurements, nutritional and other medical diagnoses, laboratory results, and treatments were key variables collected by this study at baseline and during follow-up period. Accordingly, weight and edema secondary to malnutrition were documented daily when presented. At admission, all children were examined by attending physician and clinically evaluated to identify the presence of medical comorbidities. Complete blood count (CBC) to identify anemia and/or other medical problems, plasma glucose level and blood film for malaria parasites, Gene-Xpert/RIF test for mycobacterium tuberculosis, and HIV tests were done at admission. Stool examination and

urine analyses were done to assess any evidence for the presence of parasites and urinary tract infections, respectively.

During the follow-up, experiences of new symptoms such as vomiting, diarrhea, and breathing difficulty were assessed. Besides, the data collectors monitored child feeding using 24-hour dietary recall methods until the date of discharge, or day 40 of therapeutic feeding. Finally, treatment outcome at discharge or day 40 of the admission and time to event were recorded.

## Definitions and Measurements

In this study, SAM was defined by the presence of bilateral pitting edema or severe wasting (ie, MUAC < 11.50 cm or WFH < -3 Z score).<sup>8</sup> WFH was measured using the WHO growth standards for children under 5 years of age.<sup>9</sup> Nutritional recovery or cure was considered when a child met the discharge criteria for inpatient therapeutic feeding program (MUAC  $\geq$  12.5cm, WFH  $\geq$  -2 Z score and have no edema for at least two weeks). The Sphere Project that sets standards for an outcome measure of children hospitalised with SAM was also considered. A child for whom two consecutive weighing (ie, for 2 days) were absent during inpatient therapeutic feeding program was considered defaulter.<sup>10</sup> If a child died while receiving care in the facility, the clinical condition was recorded as death.<sup>10</sup> On the contrary, if a child's clinical information was recorded as death, defaulter, transfer out or unknown status, then this was operationally defined as censored. Weight gain was calculated using the formula provided in the national guideline for inpatient management of children with SAM. That means a difference of discharge weight and admission weight in grams was divided by admission weight in kilograms and duration of hospital stay in days. Average weight gain was considered as a sum of weight gain divided by the number of children who were recovered nutritionally.

## Data Processing and Analysis

The collected data were cleaned, coded, and entered into Statistical Package for Social Sciences (SPSS) for Windows version 21.0 (SPSS Inc., Chicago, IL, USA). Descriptive analysis was performed using proportion for categorical data and mean or median for continuous variables. Pearson chi-square test was used to see an association between categorical variables while the independent two-sample *t*-test was used to compare means between groups. Treatment outcomes were categorized

into censored and recovered, and nutritional recovery was considered as a dependent outcome variable. The Kaplan–Meier survival analysis, life-table analysis, and Log rank test were used to determine a rate of nutritional recovery over time, to estimate proportion surviving within each interval and to compare time to recovery, respectively. Bivariate then multivariate regression analyses were used to identify predictors of treatment outcomes (nutritional recovery or cure). Statistical significance was determined by using P-values <0.05 and 95% confidence intervals.

## Ethical Consideration

Ethical approval for the study was obtained from the Institutional Review Board of Jimma University (reference number IHR PGS/213/18). Parents and caregivers of the children participating in the study were provided a brief description about the benefits and risks of the study, and how authors maintain confidentiality of any identifying information on health records of children included in the study. Informed, voluntary and written consent was obtained from family or caregivers of each child before commencing the data collection.

## Results

### Sociodemographic Characteristics and Anthropometric and Laboratory Measurements

From 892 children admitted to the hospital during the study period, 179 were diagnosed with severe acute malnutrition. After excluding twenty-nine children aged less than six months and seventeen children aged greater than 59 months, 133 children met the inclusion criteria. From the total of 133 children, 68 (51.1%) were female and most 77 (59.9%) of them were aged less than 24 months and were from rural areas (n=112, 84.2%). More than half (n=69, 51.9%) of the children had diarrhea at admission due to complication of SAM.

The mean weight at admission was 8.8 ( $\pm$ 4.7) kg for children who had diarrhea and 11.5 ( $\pm$ 7.01) kg for those children who had not diarrhea. The mean weight at admission was not significantly different between the two groups (p=0.011). Likewise, the mean length/height at admission was not significantly different between children who had diarrhea at admission and children who had not diarrhea at admission.

The mean MUAC at admission was 11.50 ( $\pm 1.41$ ) cm, and 11.10 ( $\pm 1.61$ ) cm for children presenting with diarrhea and those without, respectively ( $p=0.154$ )

The majority of the children (80.5%) had MUAC below 11.5 cm and 42.1% of them had WFH less than 70% ( $-3SD$ ) at admission. At admission, 37.6% of the children had both low mean MUAC ( $<11.5$ cm) and low WFH ( $<-3SD$ ).

CBC test results were available for 99 (74.4%) children. The mean (SD) hemoglobin level at admission was 9.1g/dl ( $\pm 3.1$ g/dl) for children presenting with diarrhea and 9.5 g/dl ( $\pm 2.7$  g/dl) for those without. Gene-Xpert/RIF test revealed diagnosis of tuberculosis in eight children. Again, five children had hypoglycemia with random blood glucose level  $<54$  mg/dl and three children were blood film tested positive for malaria. HIV status was known for 53 (39.85%) children and 50 of them had negative test results (Table 1). The overall mean laboratory test results were not significantly different between children who had diarrhea at admission and those who had not.

## Medical Comorbidities

Of the total 133 children, 79.7% had at least one documented comorbid medical condition. Fourteen (20.3%) children with diarrhea and 9 (14.0%) children without diarrhea at admission had Kwashi-dermatosis. Again, 27 (39.1%) children with diarrhea and 27 (37.7%) children without diarrhea had anemia (Table 2)

## Medication and Therapeutic Feedings

All the 133 children were given formula 75 (F-75) that contains 75 kilocalories per 100 milliliters. Again, 115 (86.5%) children (ie, 60 from those children with diarrhea at admission and 55 from those without) were prescribed formula 100 (F-100) that contains 100 kilocalories per 100 milliliters while fifty-three children (ie, 27 (39.1%) from those children with diarrhea at admission and 26 (40.6%) from those without) were given ready-to-use-therapeutic food (RUTF) (Table 3). Presence or absence of diarrhea at admission did not appear to significantly influence the types of therapeutic feeding provided in this study.

## Treatment Outcomes

The SPHERE project standards for an outcome measure of children hospitalised with SAM was employed. Accordingly, a recovery rate of  $>75\%$ , a defaulter rate of  $<15\%$ , a case fatality rate of  $<10\%$ , an average weight gain

**Table 1** Sociodemographic Characteristics and Anthropometric and Laboratory Measurement Results Among Children with SAM Admitted to Jimma University Medical Center, 2018, N= 133

Characteristics or Measurements		Children with Diarrhea (n=69)	Children Without Diarrhea (n=64)
Age (in months)	6–11	16 (23.2%)	19 (29.7%)
	12–23	25 (36.2%)	17 (26.6%)
	24–35	19 (27.5%)	14 (21.9%)
	36–47	8 (11.6%)	10 (15.6%)
	48–59	1 (1.45%)	4 (6.25%)
Residence	Rural	56 (81.2%)	56 (87.5%)
	Urban	13 (18.8%)	8 (12.5%)
Sex	Male	34 (49.3%)	31 (48.4%)
	Female	35 (50.7%)	33 (51.6%)
MUAC	$<11.5$ cm	59 (85.5%)	48 (75.0%)
	$>11.5$ cm	10 (14.5%)	16 (25.0%)
WFH	$<-3$ Z score	29 (42.03%)	27 (42.2%)
	$>-3$ Z score	40 (58.0%)	37 (57.8%)
Nutritional diagnoses	Edematous	33 (47.83%)	23 (35.9%)
	Non-edematous	36 (52.17%)	41 (64.1%)
Baseline breast feeding status	Yes	35 (50.7%)	33 (51.6%)
	No	34 (49.3%)	31 (48.4%)
Complete blood count (CBC)	Yes	59 (60.9%)	40 (73.4%)
	Not done	10 (39.1%)	24 (26.6%)
Hemoglobin level (g/dl)	$< 5$	3 (4.3%)	1 (1.5%)
	5.1–7.0	6 (8.7%)	7 (11.0%)
	7.1–8.0	10 (14.5%)	7 (11.0%)
	8.1–10.0	8 (11.6%)	11 (17.2%)
	$> 10.0$	32 (46.4%)	14 (21.8%)
	Unknown	10 (14.5%)	24 (37.5%)
Gene-Xpert /RIF	Yes	16 (23.2%)	11 (17.2%)
	Not done	53 (76.8%)	53 (82.8)
Stool examination	Yes	41 (59.4%)	30 (46.9%)
	Not done	28 (40.6%)	34 (53.1%)
Urine analysis	Yes	47 (68.1%)	37 (57.8%)
	Not done	22 (31.9%)	27 (42.2%)
Blood film test	Yes	20 (29.0%)	14 (21.9%)
	Not done	49 (71.0%)	50 (78.1%)
HIV test	Yes	27 (39.1%)	26 (40.6%)
	Not done	42 (60.9%)	38 (59.4%)

(Continued)

**Table 1** (Continued).

Characteristics or Measurements		Children with Diarrhea (n=69)	Children Without Diarrhea (n=64)
Blood glucose test	Yes	18 (26.1%)	19 (29.7%)
	Not done	51 (73.9%)	45 (70.3%)
Blood glucose level (mg/dl)	< 54	3 (2.9%)	2 (3.1%)
	>54	16 (23.2%)	17 (26.6%)
	Unknown	51 (73.9%)	45 (70.3%)

**Abbreviation:** HIV, human immunodeficiency virus.

of  $\geq 8$  g/kg/day and an average duration for hospital stay of  $< 4$  weeks are the acceptable standards. Out of the 133 children included, 25.6% recovered or achieved nutritional cure, 7.6% defaulted and 3.8% died during the data collection period. The overall average weight gain for the children who achieved nutritional cure was 6.9 g/kg/day (Table 4). The overall average weight gain during rehabilitation phase for recovered children (n=34) was 5g/kg/day (poor) in 16 (47.1%) children, 5 to 10 g/kg/day (moderate) and  $>10$  g/kg/day (good) in 10 (29.4%) and 8 (23.5%) children, respectively.

## Nutritional Recovery and Survival Analysis

The overall incidence rate of recovery was 4.2 (95% CI: 5.2–3.2) per 40 person-days of observation. The incidence rate of recovery was 4.7 (95% CI: 6.2–3.2) for children who had no diarrhea at admission, and it was slightly slower for children who had diarrhea at admission 3.8 (95% CI: 5.1–2.5). The overall median time to recovery was 26.0 days (95%, CI: 23.3–29.70). The median time to recovery for children who had diarrhea at admission was comparable 25.90 days (95%, CI: 21.90–30.10) to children who had no diarrhea at admission 26.10 days (95% CI: 22.5–29.5). The Kaplan–Meier survival curve indicated that there was no statistically significant difference in the median time to recovery between children who presented with diarrhea at admission and those who were not (Log rank= 0.017,  $p = 0.898$ ) (Figure 1).

On the other hand, there was a significant difference (Log rank =5.5,  $p=0.019$ ) in the median nutritional recovery time between children who had comorbid tuberculosis (30.0 days 95% CI: 27.0–33.0) and those who had not tuberculosis (24.0 days, 95% CI: 22.0–26.0). Similarly, the median time to nutritional recovery was significantly different (Log rank=

**Table 2** Comorbid Medical Conditions Among Children with SAM Admitted to Jimma University Medical Center, 2018, N= 133

Comorbid Medical Conditions		Children with Diarrhea (N=69)	Children Without Diarrhea (N=64)
Hypoglycemia	Yes	3 (4.35%)	2 (3.1%)
	No	66 (95.65%)	62 (96.9%)
Nutritional edema	Yes	33 (47.8%)	23 (35.9%)
	No	36 (52.2%)	41 (64.1%)
Kwashi-dermatosis	Yes	14 (20.3%)	9 (14.0%)
	No	55 (79.7%)	55 (86.0%)
Pneumonia	Yes	4 (5.8%)	8 (12.5%)
	No	65 (94.2%)	56 (87.5%)
Tuberculosis	Yes	12 (17.4%)	12 (18.75%)
	No	57 (82.6%)	52 (81.25%)
Sepsis	Yes	1 (1.45%)	2 (3.1%)
	No	68 (98.55%)	62 (96.9%)
HIV	Yes	2 (2.9%)	1 (1.6%)
	No	67 (97.1%)	63 (98.4%)
Otitis media	Yes	4 (5.8%)	2 (3.1%)
	No	65 (94.2%)	62 (96.9%)
Urinary tract Infections	Yes	4 (5.8%)	4 (6.25%)
	No	65 (94.2%)	60 (93.75%)
Rickets	Yes	7 (10.15%)	10 (15.63%)
	No	62 (89.85%)	54 (84.37%)
Oral thrush	Yes	10 (14.5%)	5 (7.8%)
	No	59 (85.5%)	59 (92.2%)
Anemia	Yes	27 (39.13%)	26 (40.6%)
	No	42 (60.87%)	38 (59.4%)
Malaria	Yes	3 (4.35%)	0 (0%)
	No	66 (95.65%)	64 (100%)

5.4,  $p=0.020$ ) between children who had comorbid anemia (30 days, 95% CI: 25.0–30.0) and children who had no anemia (23.0 days, 95% CI: 19.5–26.5) (Table 5).

## Factors Associated with Nutritional Recovery

In the bivariate regression analysis, presence of edema, pneumonia, tuberculosis, Kwashi-dermatosis, feeding method, vitamin A therapy, length of stabilization phase, treatment failure and inpatient complications were significantly associated with the nutritional recovery of children. However, multivariate analyses showed that only three factors (presence of treatment failure, tuberculosis, and



**Table 3** Medication and Therapeutic Feeding Among Children with SAM Admitted to Jimma University Medical Center, 2018, N= 133

Medication and Feeding Given		Children with Diarrhea (N=69)	Children Without Diarrhea (N=64)
F-75	Yes	69 (100%)	64 (100%)
F-100	Yes	60 (87.0%)	55 (85.9%)
	No	9 (13.0%)	9 (14.1%)
RUTF	Yes	27 (39.13%)	26 (40.6%)
	No	42 (60.87%)	38 (59.4%)
Vitamin A	Yes	38 (55.1%)	42 (65.6%)
	No	31 (44.9%)	22 (34.4%)
Folic Acid	Yes	69 (100%)	64 (100%)
Oral antibiotics	Yes	7 (10.15%)	25 (39.1%)
	No	62 (89.85%)	39 (60.9%)
Parenteral Antibiotics	Yes	62 (89.85%)	40 (62.5%)
	No	7 (10.15%)	24 (37.5%)
Iron	Yes	28 (40.6%)	25 (39.1%)
	No	41 (59.4%)	39 (60.9%)
Mebendazole	Yes	41 (59.4%)	38 (59.4%)
	No	28 (40.6%)	26 (40.6%)
ReSoMal	Yes	59 (85.5%)	4 (6.25%)
	No	10 (14.5%)	60 (93.75%)
IV fluid	Yes	3 (4.35%)	1 (1.56%)
	No	66 (95.65%)	63 (98.44%)
Blood Transfusion	Yes	3 (4.35%)	1 (1.56%)
	No	66 (95.65%)	63 (98.44%)

**Abbreviations:** F-75, formula-75; F-100, formula 100; ReSoMal, rehydration solution for malnutrition; RUTF, ready to use therapeutic food; IV, intravenous.

anemia) were associated with nutritional recovery. Thus, in children with comorbid tuberculosis, the chance of recovery from SAM was 80.7% lower compared with

children without tuberculosis (adjusted hazard ratio (AHR) = 0.193, 95% CI: 0.06–0.62; P=0.006). Likewise, children with comorbid anemia had 68.2% lower probability of recovery from SAM compared with children without anemia (AHR = 0.322; 95% CI: 0.139–0.743; P=0.008). Besides, children who experienced treatment failure during admission had 83.5% lower probability to recover from SAM compared with those children with no treatment failure during hospitalisation (AHR = 0.165; 95% CI: 0.164–0.806; P=0.008) (Table 6).

## Discussion

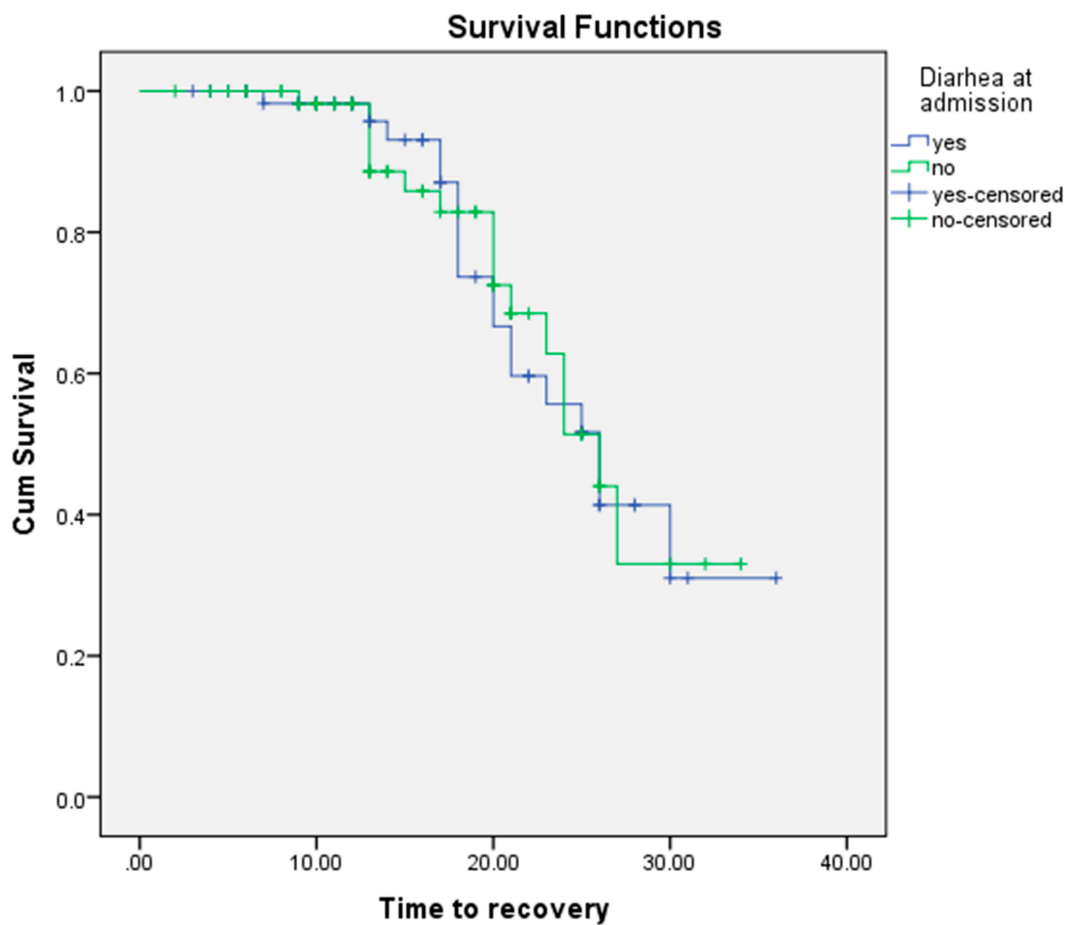
In this study, case fatality rate was 3.8% which was within the national and international standards of below 10%.<sup>11</sup> Similarly, the defaulting rate (7.6%) was found to be within the acceptable range of national and international recommendations which is <15.0%.<sup>11</sup> However, the recovery rate (25.6%) was much lower than both national and international minimum acceptable value (>75%) for inpatient management of SAM.<sup>11</sup> This is comparable with the findings of study conducted in Latin America (61.7%)<sup>12</sup> and some African countries (53.7%).<sup>13</sup> On the contrary, the recovery rate in our study was higher than reports from studies conducted in some African countries.<sup>14</sup> The higher recovery rate in our study might be due to delayed transition to the rehabilitation phase (catch-up feeding), failure to increase caloric intake during the rehabilitation phase or preference for outpatient nutritional rehabilitation.

The overall median time to recovery (26.0 days) in the present study was comparable with the international recommendation which is less than four weeks for inpatient management of SAM.<sup>11</sup> Compared with our findings, studies conducted in Bangladesh<sup>15</sup> and India<sup>16</sup> reported shorter median time to recovery (less than 3 weeks versus

**Table 4** Performance Indicators versus Treatment Outcomes for Children with SAM Admitted to Jimma University Medical Center, 2018, N= 133

Category		Performance Indicators				
		Recovery Rate	Defaulter Rate	Death Rate	Average Length of Hospital Stays	Average Weight Gain
Children with diarrhea		18 (52.9%)	5 (50.0%)	4 (80.0%)	25.9 days	6.3 g/kg/day
Children without diarrhea		16 (47.1%)	5 (50.0%)	1 (25.0%)	26.1 days	7.6 g/kg/day
Overall		25.6%	7.6%	3.8%	26 days	6.9 g/kg/day
SPHERE* Standards	Acceptable	>75%	<15%	<10%	<4 weeks	≥8 g/kg/day
	Alarming	<50%	>25%	>15%	>6 weeks	≤8 g/kg/day

**Note:** \*The sphere project.



**Figure 1** Kaplan–Meier estimate of recovery time in children with severe acute malnutrition by status of diarrhea admitted to Jimma University Medical Center, 2018, N= 133.

15.5 days). On the contrary, in a study conducted in Malawi<sup>17</sup> longer median time to recovery (49.0 days) has been reported. The discrepancies in the findings could be due to the variation in the quality of care at the health-care settings, types of medical comorbidities and complications during hospitalisation.

The overall average daily weight gain in the present study was slightly lower than the international recommendation (6.9g/kg/day versus  $\geq 8$ g/kg/day)<sup>11</sup> and the findings of studies conducted in some Asian countries (9.3g/kg/day).<sup>18</sup> However, it is slightly higher compared with reports from some African countries (5.6g/kg/day).<sup>14</sup> The variations in the

**Table 5** Recovery Time of Severe Acute Malnutrition by Characteristics of Children Admitted to Jimma University Medical Center, 2018, N= 133

Medical and Treatment Statuses of Children		Children with Diarrhea (n=69)	Children Without Diarrhea (n=64)	Median Time to Recovery Estimate (95% CI)	Log Rank Value	P-values
Tuberculosis	No	57	52	24.0 (22.0-26.0)	5.5	0.019
	Yes	12	12	30.0 (27.0-33.0)		
Anemia	No	42	38	23.0 (19.5–26.5)	5.4	0.020
	Yes	27	26	30.0 (25.0–30.0)		
Kwashi-dermatosis	No	55	55	18.0 (16.0 –20.0)	4.67	0.031
	Yes	14	9	24.0 (14.0–34.0)		
Treatment failure	No	59	55	23.0 (21.0–25.0)	11.6	0.001
	Yes	10	9	33.0 (30.0–37.0)		

**Table 6** Predictors of Nutritional Recovery in Children with Severe Acute Malnutrition Admitted to Jimma University Medical Center, 2018, N= 133

Factors		Children with Diarrhea (N=69)	Children Without Diarrhea (N=64)	AHR (95% CI)	P-values
Residence	Rural	56	56	1 1.01 (0.34–2.97)	0.992
	Urban	13	8		
Edema	No	36	41	1 3.70 (0.42–31.41)	0.231
	Yes	33	23		
Vomiting at admission	No	29	54	1 0.36 (0.16–0.81)	0.053
	Yes	40	10		
Pneumonia	No	65	56	1 0.46 (0.14–1.55)	0.210
	Yes	4	8		
Vitamin A	No	31	22	1 1.69 (0.73–3.88)	0.220
	Yes	38	42		
Anemia	No	42	38	1 0.32 (0.14–0.74)	0.008*
	Yes	27	26		
Kwashi-dermatosis	No	55	55	1 0.75 (0.19–2.97)	0.681
	Yes	14	9		
Tuberculosis	No	57	52	1 0.19 (0.06–0.62)	0.006*
	Yes	12	12		
Feeding method	Oral	46	44	1 0.62 (0.22–1.81)	0.384
	NGT	23	20		
Inpatient complication	No	51	54	1 0.41 (0.16–1.03)	0.057
	Yes	18	10		
Treatment failure	No	59	55	1 0.17 (0.16–0.81)	0.026*
	Yes	10	9		
Length of stabilisation phase	< 7days	25	23	1 0.48 (0.23–1.02)	0.055
	≥ 7days	44	41		

**Note:** \*Statistically significant.

**Abbreviations:** AHR, adjusted hazard ratio; CI, confidence interval; NGT, nasogastric tube.

findings could be due to inappropriate feeding, inpatient complication, and sub-optimal average daily weight gain.

In this study, it was found that the presence of tuberculosis was an independent predictor of time to recover and thus, children with tuberculosis had lower probability of recovery from SAM. In line with our finding, the presence of tuberculosis comorbidity was reported as an independent predictor of mortality in a study conducted in Bangladesh.<sup>15</sup> It is known that tuberculosis worsens undernutrition as patients with active tuberculosis are often in a catabolic state, and experience weight loss from decreased dietary intake as a result of loss of appetite, nausea and abdominal pain.

Likewise, in this study, we found that the probability of recovery from SAM was 68.8% lower in children with

anemia compared with children without anemia. Contrary to our findings, a study conducted in Burkina Faso reported that presence of anemia has no impact on recovery rate in children with SAM.<sup>19</sup> The high prevalence of anemia (83.3%) in the study population might have limited the above study<sup>19</sup> to detect meaningful differences in the recovery rate between children with anemia and those children without anemia. The present study also found that treatment failure is an independent predictor of time to recovery. Children who experienced treatment failure during admission were found to have 83.5% lower probability of recovery from SAM when compared with children who did not experience treatment failure.

This study is the first longitudinal study to identify factors associated with treatment outcomes in children



severe acute malnutrition in Ethiopia. However, it is not without limitation. The small sample size and being limited to a single medical center may limit generalizability of the findings of this study.

## Conclusion

The nutritional recovery rate and average daily weight gain were found to be suboptimal in the study population. However, the median time to nutritional recovery was within the recommended national standard. Children who had diarrhea at admission did not have lower recovery rate and prolonged time to recovery compared with children who had no diarrhea at admission. Optimal daily weight gain and presence of comorbidities such as tuberculosis and anemia contributed to prolonged stabilization phase and time to achieve nutritional cure. Optimising the average daily weight gain and clinical management of comorbidities may enhance nutritional recovery in hospitalised children with SAM.

## Acknowledgments

The authors acknowledge participants of the study for their time, and Jimma University for funding this study.

## Author Contributions

All authors contributed to data analysis, drafting or revising the article, gave final approval of the version to be published, and agree to be accountable for all aspects of the work.

## Disclosure

The authors declare that they have no competing interests.

## References

- Black RE, Victora CG, Walker SP, et al. Maternal and Child Nutrition I Maternal and child undernutrition and overweight in low-income and middle-income countries. *lancet*. 2013;6736(13):427–451.
- United Nation children's Funds, World Health Organization and the WBG. *Levels and Trends in Child Malnutrition*; 2017.
- Wakai S, Ito N, Adachi N, Ueda D, Tsutsumi H, Chiba S. Hospice care for children [8]. *Lancet*. 1996;348(9034):1102. doi:10.1016/S0140-6736(05)64448-0
- United Nation Children's Fund(UNICEF). *Management of Severe Acute Malnutrition in Children: Working Towards Results at Scale*; 2015.
- Federal Ministry of Health(FMOH) Ethiopia. *Protocol for the Management of Severe Acute Malnutrition*; 2007:1–122
- Central Statistical Agency (CSA), Ababa A. *Ethiopia Mini Demographic and Health Survey*. Ethiopia Demographic and Health Survey; 2014.
- Central Statistical Agency (CSA) Addis Ababa E. *Ethiopia Demographic and Health Survey*; 2016.
- United Nation High Commission For Refugees(UNHCR), World Food Programme (WFP) and WHO (WHO). *Guidelines for Selective Feeding: The Management of Malnutrition in Emergencies*; 2011.
- World Health Organization (WHO). WHO Child Growth Standards. *Dev Med Child Neurol*. 2009;51(12):1002. doi:10.1111/j.1469-8749.2009.03503.x
- Ethiopian Federal ministry of health. *Guidelines for the Management of Acute Malnutrition*; 2016.
- The Sphere Project. *Humanitarian Charter and Minimum Standards in Disaster Response*; 2011.
- Bernal AC, Vela C, Alcaraz G, Botero AJ. Treatment of severe malnutrition in children: experience in implementing the World Health Organization Guidelines in Turbo, Colombia. *J Pediatr Gastroenterol Nutr*. 2008;46:322–328.
- Irena AH, Mwambazi M, Mulenga V. Diarrhea is a major killer of children with severe acute malnutrition admitted to inpatient set-up in Lusaka, Zambia. *Nutr J*. 2011;10(1):110. doi:10.1186/1475-2891-10-110
- John FK. Clinical outcomes of children aged 6 to 59 months with severe acute malnutrition admitted to mbagathi district hospital department of paediatrics & child health. *Arch Dis Child*. 2013;94:512–516.
- Hossain I, Dodd NS, Ahmed T, et al. Experience in managing severe malnutrition in a government tertiary treatment facility in Bangladesh. *J Health Popul Nutr*. 2009;27(1):72.
- Shah RH, Javdekar BB, Rh S, Contemp IJ, May P. Management of children with severe acute malnutrition: experience of nutrition rehabilitation centre at Baroda, Gujarat. *Indian Pediatr*. 2014;1(1):3–6.
- Sadler K, Kerac M, Collins S, Khengere H, Nesbitt A. Improving the Management of severe acute malnutrition in an area of high HIV prevalence. *J Trop Pediatr*. 2018;54(6):364–369.
- Singh P, Kumar P, Rohatgi S, Basu S, Aneja S. Experience and outcome of children with severe acute malnutrition using locally prepared therapeutic diet. *Indian J Pediatr*. 2016;83:3–8.
- Savadogo LGB, Zoetaba I, Ilboudo B, Kinda M. Impact of anemia on mortality and nutritional recovery among hospitalized severely malnourished children in Burkina Faso. *Open J Pediatr*. 2014;115–120.

Pediatric Health, Medicine and Therapeutics

Publish your work in this journal

Pediatric Health, Medicine and Therapeutics is an international, peer-reviewed, open access journal publishing original research, reports, editorials, reviews and commentaries. All aspects of health maintenance, preventative measures and disease treatment interventions are addressed within the journal. Practitioners from all disciplines are

invited to submit their work as well as healthcare researchers and patient support groups. The manuscript management system is completely online and includes a very quick and fair peer-review system. Visit <http://www.dovepress.com/testimonials.php> to read real quotes from published authors.

Submit your manuscript here: <http://www.dovepress.com/pediatric-health-medicine-and-therapeutics-journal>

Dovepress