
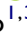




# Breathing–Swallowing Discoordination and Inefficiency of an Airway Protective Mechanism Puts Patients at Risk of COPD Exacerbation

This article was published in the following Dove Press journal:  
*International Journal of Chronic Obstructive Pulmonary Disease*

Yuki Yoshimatsu <sup>1,2</sup>  
Kazunori Tobino <sup>1,3</sup>  
Shinsuke Nagami <sup>4</sup>  
Naomi Yagi<sup>2,5,6</sup>  
Yoshitaka Oku <sup>2</sup>

<sup>1</sup>Department of Respiratory Medicine, Iizuka Hospital, Iizuka, Fukuoka, Japan; <sup>2</sup>Department of Physiology, Hyogo College of Medicine, Nishinomiya, Hyogo, Japan; <sup>3</sup>Department of Respiratory Medicine, Juntendo University Graduate School of Medicine, Tokyo, Japan; <sup>4</sup>Department of Speech Language Pathology and Audiology, Faculty of Rehabilitation, Kawasaki University of Medical Welfare, Kurashiki, Okayama, Japan; <sup>5</sup>Department of Neurology, Graduate School of Medicine, Kyoto University, Kyoto, Japan; <sup>6</sup>Department of Medical Engineering, Himeji Dokkyo University, Himeji, Hyogo, Japan

**Introduction:** Dysphagia is a newly acknowledged multifactorial risk factor for the exacerbation of chronic obstructive pulmonary disease (COPD). Effective screening methods are awaited. We performed a prospective study to evaluate the impact of musculature and breathing–swallowing discoordination on the exacerbation of COPD with a novel swallowing monitor using a piezoelectric sensor.

**Patients and Methods:** This was the second part of a prospective study of patients with COPD from the Iizuka COPD cohort. Seventy patients with stable COPD underwent dysphagia screening, skeletal muscle mass index (SMI) and tongue pressure measurements, and swallowed 3 mL and 30 mL of water while wearing a swallowing monitor. Patients were followed for one year.

**Results:** During the follow-up period, 28 patients experienced exacerbations (E group), and 42 had none (non-E group). There was no significant difference in tongue pressure measurements between the two groups. The SMI in the E group was significantly lower than that in the non-E group. Among the swallowing monitor measurements, the 3 mL I-SW% (the percentage of swallows in which inspiration preceded the swallow [out of ten 3 mL swallows]) was significantly lower in the E group than in the non-E group.

**Conclusion:** Breathing–swallowing coordination is an independent factor related to the exacerbation of COPD. Not only the presence of discoordination but also the inability to produce an airway protection mechanism may contribute to more frequent aspiration and exacerbations.

**Keywords:** dysphagia, screening, aspiration, piezomonitor, inspiration, COPD

## Introduction

Chronic obstructive pulmonary disease (COPD) is an expanding issue worldwide. One of the recent topics in COPD is dysphagia. It has become clear that patients with COPD are more likely to complicate dysphagia, even at the early stages of the disease.<sup>1</sup> Dysphagia is a newly acknowledged phenotype associated with an increased risk of exacerbation.<sup>1</sup> Effective ways to screen for dysphagia in patients with COPD are being investigated.<sup>2,3</sup> Many characteristics of patients make them vulnerable to dysphagia, such as smoking history, sarcopenia, dry mouth, lung hyperinflation, the high prevalence of gastroesophageal reflux disease (GERD), and reduced maximal laryngeal elevation.<sup>1,4</sup> However, the uniqueness of dysphagia in this population lies in the discoordination of breathing and swallowing.<sup>2,5</sup> In healthy adults, swallowing has been known to occur during

Correspondence: Yuki Yoshimatsu  
Department of Respiratory Medicine,  
Iizuka Hospital, Iizuka, Fukuoka 820-8505,  
Japan  
Tel +81-948-22-3800  
Fax +81-948-29-5744  
Email yukitsukihana0105@gmail.com

exhalation. In patients with COPD, this pattern can commonly be disrupted, causing inhalation to occur before or after the swallow. Especially with larger volumes of fluids, they tend to present an inspiration before swallowing.<sup>6</sup> These changes can cause aspiration and hence an exacerbation.<sup>5</sup>

A novel technique, namely, a swallowing monitor using a piezoelectric sensor (hereinafter referred to as a “swallowing monitor”), has been tested effective for studying the association between breathing–swallowing discoordination and the risk of COPD exacerbations.<sup>2</sup> However, in this study, the technique was only effective when specifically designated test foods were used. It is challenging to apply these results to daily practice. Further investigation is necessary using a common subject. The primary aim of our study was to evaluate the utility of the swallowing monitor in predicting COPD exacerbation with water. The secondary aim was to find an effective screening test for daily practice, by comparing the results of the swallowing monitor with the dysphagia screening tests. In addition to dysphagia screening tests taken in our previous study,<sup>7</sup> two more measurements were taken. The first is the skeletal muscle mass index (SMI). It is becoming evident that a low muscle mass and sarcopenia can cause exacerbations and are poor prognostic factors in patients with COPD.<sup>8</sup> The second additional technique is tongue pressure measurement. Tongue pressure measurement has become popular for assessing oral phase dysphagia and sarcopenia;<sup>9</sup> however, it has not been investigated in depth in COPD.

## Patients and Methods

### Patients

This study was the second part of a prospective study of patients with COPD from the Iizuka COPD cohort. Ethical approval was provided by the Iizuka Hospital Ethics Committee, as instituted by the Declaration of Helsinki (Number 17026) and written informed consent was obtained from all patients. Seventy patients with COPD were recruited from the outpatient clinic of Iizuka Hospital Department of Respiratory Medicine from March 28 to September 22, 2017. Detailed inclusion/exclusion criteria and data collection methods can be found in our previous study.<sup>7</sup> Briefly, patients diagnosed with COPD according to the GOLD 2017 criteria were included.<sup>10</sup> Those with

coexisting respiratory conditions, other conditions causing dysphagia, or a poor general condition were excluded.

A COPD exacerbation was defined by the presence of new or worsening COPD symptoms (cough, sputum, wheezing, dyspnea, or chest tightness), at least one of which lasted for three days or more. An exacerbation was classified as moderate or severe if at least one of the following were required: systemic steroid administration, antibiotic therapy, or hospital admission.<sup>11,12</sup> Upon inclusion, patients underwent the following dysphagia screening tests: the 10-item Eating Assessment Tool (EAT-10),<sup>13</sup> Frequency Scale for the Symptoms of Gastroesophageal Reflux Disease (FSSG),<sup>14</sup> repetitive saliva swallowing test (RSST),<sup>15</sup> water swallowing test (WST),<sup>16</sup> and simple swallow provocation test (SSPT).<sup>17</sup>

In addition to the above standard dysphagia screening tests, the following measurements were taken.

### Skeletal Muscle Mass Index

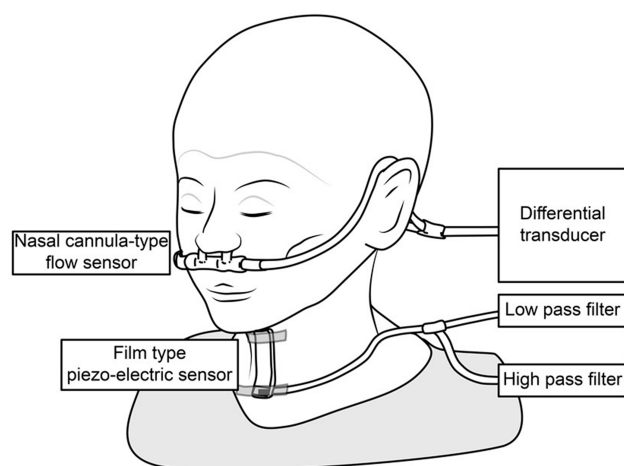
The skeletal muscle mass index (SMI) was measured using the InBody 770 (Biospace Co. Ltd., Seoul, Korea). In this device, skeletal muscle mass was estimated from bioimpedance analysis measurements and expressed as SMI ( $\text{SMI} = \text{skeletal muscle mass/body mass} \times 100$ ).

### Tongue Pressure

Tongue pressure was measured using a handy probe consisting of a small balloon pressurized to 19.6 kPa with air (JM-TPM; JMS, Hiroshima, Japan). Participants compressed the balloon with their tongue to the palate at maximum effort, for seven seconds. The maximum inner pressure of the balloon was measured and recorded. Three measurements were taken, and the average value was obtained. The reliability of intraindividual measurement in healthy individuals has been confirmed, with the coefficient of variation of 5.64%.<sup>18</sup> Normal values depend on age and sex, and are still under discussion.

### Swallowing Monitor

A non-invasive swallowing monitoring system using a piezoelectric sensor detecting respiratory flow, swallowing sound, and laryngeal movement was used.<sup>2</sup> The patients were put on the swallowing monitor and seated facing forward in an upright position. First, 3 mL of water was injected into the oral cavity using a syringe. The patients were told to hold this in their mouth and then swallow (as in the modified WST). This was repeated ten times. Secondly, 30 mL of water in a cup was handed to the patient. They were told to drink all the water in their usual manner (as in the WST).



**Figure 1** The swallowing monitor. The figure shows a non-invasive swallowing monitoring system using a film-type piezoelectric sensor taped to the front neck to detect swallowing sound and laryngeal movement, while a nasal cannula-type flow sensor detects the respiratory flow.

**Notes:** Reproduced from Nagami S, Oku Y, Yagi N, et al. Breathing-swallowing discoordination is associated with frequent exacerbations of COPD. *BMJ Open Respir Res.* 2017;4:e000202 with permission from BMJ Publishing Group Ltd.<sup>2</sup>

The swallowing monitor is shown in [Figure 1](#). It consists of a nasal cannula-type flow sensor, a film-type piezo-electric sensor, and signal processing units. Using a series of respiratory flow, the laryngeal sound and motion data, we evaluated (1) the duration of deglutition apnea and swallowing latency, and (2) breathing–swallowing coordination. Details on the monitor and its measurements can be found in previous reports.<sup>2,19</sup>

The patients were followed up for one year, during which they were asked to keep a diary to record exacerbations. During the follow-up period, all medical records in our hospital and prescription records from all medical institutions were prospectively reviewed, along with the designated diaries. After one year, the patients were classified into two groups according to the presence or absence of COPD exacerbations during the follow-up period: the exacerbation group (E group) and the non-exacerbation group (non-E group). The abovementioned measurements were compared between the groups.

## Statistical Analyses

Descriptive statistics for baseline data were presented as the percentage, mean, and standard deviation. Differences between the two groups were examined using Mann–Whitney’s *U*-test and Fischer’s exact test. *P* values of <0.05 were considered to indicate statistical significance. When there was a statistically significant difference between the two groups in any of the dysphagia screening results,

a receiver operating characteristic (ROC) curve analysis was performed to evaluate its utility in the differentiation of the two groups. A log-rank analysis and univariate Cox regression analysis were performed to identify the best predictors of COPD exacerbations. All statistical analyses were performed using the JMP Pro software program (ver. 15; SAS Institute, Cary, NC, USA). Two-sided *P* values <0.05 were considered to indicate statistical significance.

## Results

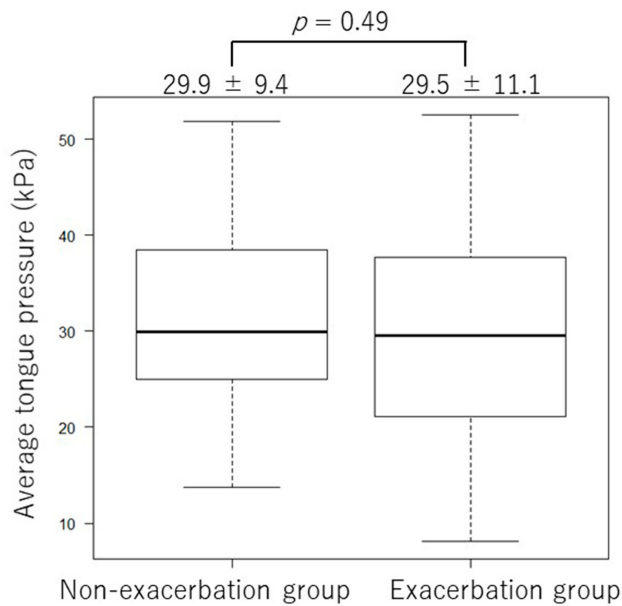
Details on patient background and dysphagia screening test results are explained in our previous study.<sup>7</sup> The patient background is shown in [Table 1](#). There were 59 males (84.3%) and 11 females (15.7%). The mean age was  $72.8 \pm 7.5$  years. During the 1-year follow-up period, 28 patients (40.0%) experienced one or more exacerbations (E group), and 42 (60.0%) experienced no exacerbations (non-E group). Patients in the E group were significantly more likely to have experienced exacerbations in the previous year than those in the non-E group. Statistically significant differences between the groups were observed in the results of the RSST, when the cut-off value was set at 2, 3, 4, or 5 swallows per 30 seconds ( $p < 0.01$ ). With an RSST swallowing frequency of  $\leq 5$  times considered abnormal, the sensitivity and specificity were 42.9% and 96.4%, respectively, and the area under the ROC curve was 0.775 (95% confidence interval [CI], 0.670–0.881). Otherwise, there were no differences in patient background or dysphagia screening tests.

As shown in [Figure 2](#), there was no significant difference in the average of the three tongue pressure measurements

**Table 1** Patient Characteristics

|   | Total<br>N = 70 | E Group<br>N = 28 | Non-E<br>Group<br>N = 42 | <i>p</i> value |
|---|-----------------|-------------------|--------------------------|----------------|
| Age (years old)                           | 72.8 ± 7.5      | 73.9 ± 8.0        | 72.1 ± 7.2               | 0.34           |
| Male/Female                               | 59/11           | 22/6              | 37/5                     | 0.33           |
| BMI (kg/m <sup>2</sup> )                  | 21.7 ± 3.9      | 20.8 ± 4.4        | 22.3 ± 3.4               | 0.11           |
| <b>GOLD Stage</b>                         |                 |                   |                          |                |
| I   | 15 (21.4)       | 4 (14.3)          | 11 (26.2)                | 0.24           |
| II  | 25 (35.7)       | 7 (25.0)          | 18 (42.9)                |                |
| III                                       | 21 (30.0)       | 11 (39.3)         | 10 (23.8)                |                |
| IV  | 9 (12.9)        | 6 (21.4)          | 3 (7.1)                  |                |
| History of exacerbations in the past year | 27 (38.6)       | 16 (57.1)         | 11 (26.2)                | 0.01           |

**Notes:** E group: exacerbation group, Non-E group: non-exacerbation group. Data in parentheses are percentages.

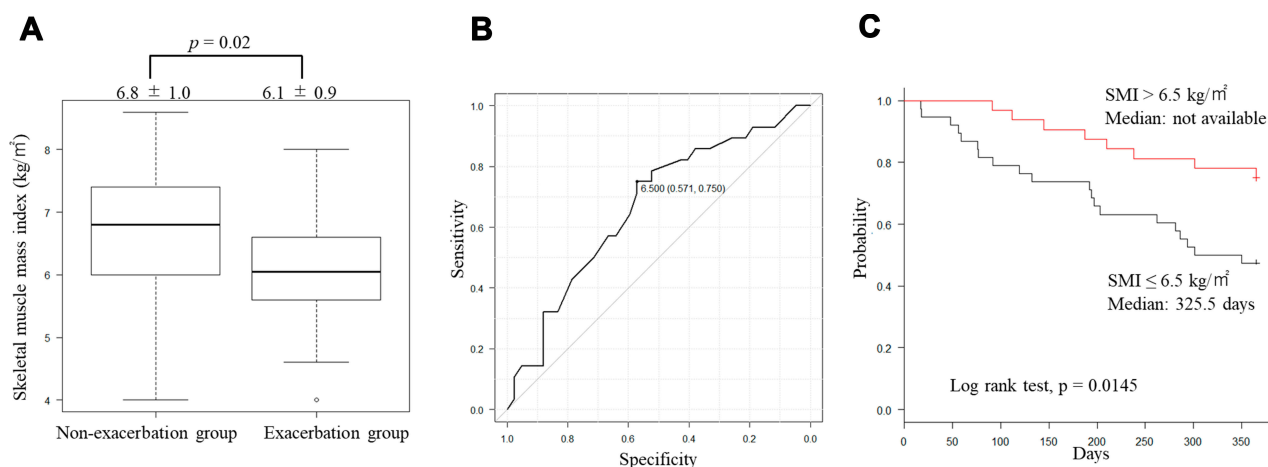


**Figure 2** Tongue pressure measurements in the exacerbation group and the non-exacerbation group. There was no significant difference in the average of the three tongue pressure measurements between the two groups ( $29.5 \pm 11.1$  kPa vs  $29.9 \pm 9.4$  kPa, respectively,  $p = 0.49$ ).

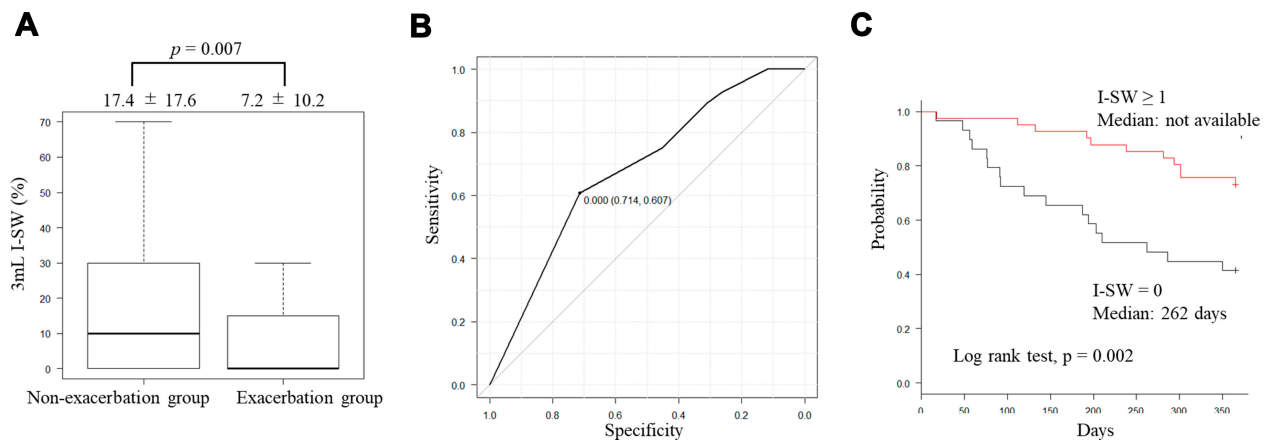
between the E and non-E groups ( $29.5 \pm 11.1$  kPa vs  $29.9 \pm 9.4$  kPa, respectively,  $p = 0.49$ ). In contrast, as shown in **Figure 3A**, the SMI in the E group was significantly lower than that in the non-E group ( $6.8 \pm 1.0$  kg/m<sup>2</sup> and  $6.1 \pm 0.9$  kg/m<sup>2</sup>, respectively,  $p = 0.02$ ). **Figure 3B** shows an ROC curve analysis using the skeletal muscle mass index to differentiate the two groups. When an SMI of  $<6.5$  kg/m<sup>2</sup> was considered abnormal, the sensitivity and specificity

were 75.0% and 57.1%, respectively, and the area under the ROC curve was 0.67 (95% confidence interval [CI], 0.536–0.796). **Figure 3C** shows the Kaplan–Meier curves with the results of the Log rank test and univariate Cox regression analysis, which were used to compare the time to the first COPD exacerbation during the follow-up period. The time to the first exacerbation in patients with an SMI of  $>6.5$  kg/m<sup>2</sup> (median not available [NA]) was significantly longer than that in patients with an SMI of  $\leq 6.5$  kg/m<sup>2</sup> (median 325.5 days,  $p=0.0145$ ). The median time to exacerbation for the group of patients with an SMI of  $>6.5$  kg/m<sup>2</sup> was not reached during the follow-up, and the 1-year exacerbation-free rate was 77.4%.

Among the measurements of the swallowing monitor, the 3 mL I-SW% (the percentage of swallows in which inspiration preceded the swallow [out of ten 3 mL swallows]) was significantly lower in the E group than in the non-E group ( $7.2 \pm 10.2$  vs  $17.4 \pm 17.6$  times,  $p=0.007$ ), as shown in **Figure 4A**. **Figure 4B** shows the ROC curve analysis using I-SW% to differentiate the two groups. When the cutoff level of I-SW% was set at 0, the sensitivity and specificity were 60.7% and 71.4%, respectively, and the area under the ROC curve was 0.682 (95% confidence interval [CI], 0.562–0.802). The Kaplan–Meier curves with the Log rank test and univariate Cox regression analysis comparing the time to the first COPD exacerbation of any severity are shown in **Figure 4C**. The time to the first exacerbation was significantly longer in patients with one or more I-SW than those with no I-SW (median,



**Figure 3** Skeletal muscle mass index and COPD exacerbation. **(A)** Skeletal muscle mass index in the Exacerbation group and the non-exacerbation group. The skeletal muscle mass index was significantly lower in the Exacerbation group than in the Non-exacerbation group ( $6.8 \pm 1.0$  kg/m<sup>2</sup> and  $6.1 \pm 0.9$  kg/m<sup>2</sup>, respectively,  $p = 0.02$ ). **(B)** Results of the ROC curve analysis using the skeletal muscle mass index. When the cut-off value was set at 6.5 kg/m<sup>2</sup>, the sensitivity and specificity were 75.0% and 57.1%, respectively, and the area under the ROC curve was 0.67 (95% confidence interval [CI], 0.536–0.796). **(C)** Kaplan–Meier curves of the time to first exacerbation (any severity) stratified by the skeletal muscle mass index cut-off value of 6.5. The time to first exacerbation was significantly longer in patients with an SMI higher than 6.5 kg/m<sup>2</sup> than in patients with an SMI 6.5 kg/m<sup>2</sup> or lower ( $p = 0.0145$ ).

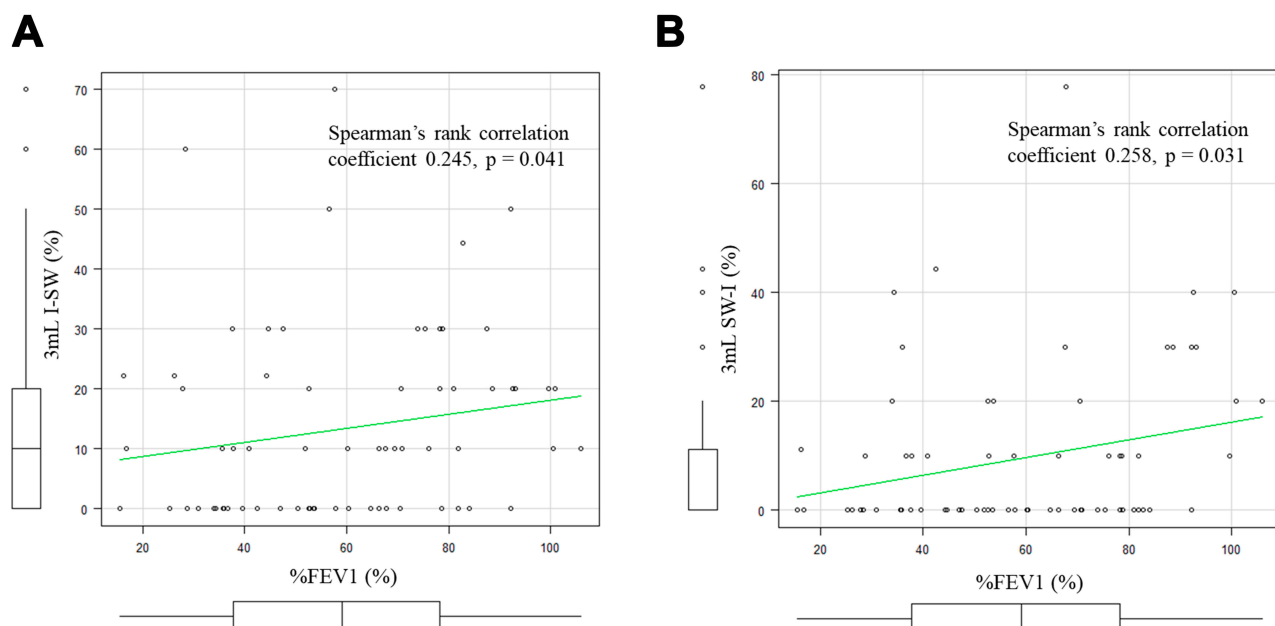


**Figure 4** I-SW in 3 mL swallows and COPD exacerbation. **(A)** The incidence of I-SW in 3 mL swallows. The 3 mL I-SW% (the percentage of swallows in which inspiration preceded the swallow, out of the ten 3 mL swallows) was significantly lower in the E group than in the non-E group ( $7.2 \pm 10.2$  vs  $17.4 \pm 17.6$  times,  $p = 0.007$ ). **(B)** Results of the ROC curve analysis using the frequency of I-SW (%) of all the 3 mL swallows. When the cut-off value was set at 0, the sensitivity and specificity were 60.7% and 71.4%, respectively, and the area under the ROC curve was 0.68 (95% confidence interval [CI], 0.562–0.802). **(C)** Kaplan–Meier curves of the time to first exacerbation (any severity) stratified by the presence of one or more I-SW. The time to first exacerbation was significantly longer in patients with one or more I-SW than those with no I-SW (median, not available vs 262 days,  $p = 0.002$ ).

not available vs 262 days,  $p = 0.002$ ). Therefore, this may be a useful factor for predicting the risk of a COPD exacerbation. The median time to exacerbation for the group of patients with an I-SW% > 0 was not reached during the follow-up, and the 1-year exacerbation-free rate was 73.2%.

The correlation between the I-SW% and SW-I% in 3 mL water and %FEV1 is shown in Figure 5. As shown in Figure 5A, the I-SW% and %FEV1 showed a positive

correlation (Spearman's rank correlation coefficient 0.245,  $p = 0.041$ ). There was also a positive correlation in the SW-I % in 3 mL water and %FEV1, as shown in Figure 5B (Spearman's rank correlation coefficient 0.258,  $p = 0.031$ ). However, both correlations were weak. There was no correlation between the SMI and 3 mL I-SW% (Spearman's Rank correlation coefficient  $-0.0568$ ,  $p = 0.641$ ). There were no correlations between other measurements of the swallowing monitor and the results of the dysphagia screening test.



**Figure 5** I-SW%, SW-I% and %FEV1. **(A)** The correlation between the I-SW% in 3 mL water and %FEV1. The I-SW% and %FEV1 showed a positive correlation (Spearman's rank correlation coefficient 0.245,  $p = 0.041$ ). **(B)** The correlation between the SW-I% in 3 mL water and %FEV1. The SW-I% and %FEV1 also showed a positive correlation (Spearman's rank correlation coefficient 0.258,  $p = 0.031$ ).



## Discussion

We performed a prospective study to determine the utility of the swallowing monitor with water in patients with COPD. Our results show that in patients with COPD who have a higher I-SW%, the risk of an exacerbation was lower. Generally, the presence of inspiration immediately before or after a swallow is thought to be associated with a high risk of aspiration.<sup>2,5</sup> Our results differed from these reports. The reason for this difference may be due to the unique swallowing changes in COPD and our study methods.

It is known that the swallowing physiology in patients with COPD differs from that in normal subjects. In patients with COPD, the maximal laryngeal elevation during swallowing is reduced, which increases the risk of penetration and aspiration.<sup>4</sup> To reduce this risk, some patients have been found to show voluntary airway-protecting behaviors during swallowing, such as prolonged airway closure and earlier laryngeal closure. Patients with COPD also have a longer pharyngeal swallowing phase.<sup>20</sup> The time between the onset of deglutition apnea to the onset of swallowing and also the duration of deglutition apnea are lengthened in swallows with the I-SW-E pattern in comparison to the E-SW-E pattern.<sup>19</sup> Therefore, the I-SW-E pattern observed in patients with COPD while swallowing large boluses is interpreted as an airway-protecting behavior to compensate for the delayed triggering of the swallowing reflex and a longer pharyngeal transit time. This is suspected to be one of the reasons why the COPD exacerbation risk was lower in those with a higher prevalence of I-SW pattern.

Regarding the methodology in the present study, we injected 3 mL of water into the patient's oral cavity using a syringe and instructed them to hold the water in their mouth before swallowing. This may have caused patients to inhale before the procedure, as an airway protective mechanism. In other words, patients with COPD who have the capacity to compensate for their impaired breathing may have taken a breath before holding their breath to swallow. On the other hand, the patients who were not able to inhale before swallowing may have been those who were unable to compensate, thereby increasing their risk of aspiration and an exacerbation. The atypical way of swallowing water inserted by a syringe (and the fear of choking on it) may have brought forth more airway protective mechanisms in some patients. This may also help to explain why the I-SW% and SW-I% were not significantly different in the two groups when drinking 30 mL of water. In the WST, water was provided in a cup, and

patients were instructed to drink it at their own pace. This may have led to less cautious behavior in the 30 mL WST than in the procedure for the 3 mL of water. This may have also been the reason why the I-SW% was higher in patients with fewer exacerbations in the previous study,<sup>2</sup> in which jelly was used instead of water. Jelly may have caused less cautious behavior than water. It may be informing to perform additional studies with emphasis on procedures and instructions that would enable a natural swallowing pattern. For instance, it may be valuable to evaluate I-SW% during a regular meal or while sleeping.

Patients with more severe COPD tended to have lower I-SW% and SW-I% values. Although statistically significant, the correlation coefficients were low, suggesting they are weak confounding factors. With the progression of COPD, lung hyperinflation and breathlessness also worsens. These factors may make it difficult for patients to inhale before swallowing for airway protection. The same can also be assumed to happen after swallowing; the more severe the COPD, the higher the intrathoracic pressure, and therefore the more difficult it is to inhale after swallowing.

The measurements of the swallowing monitor did not show any correlation with any dysphagia screening tests performed in this cohort. This suggests that breathing–swallowing discoordination is a unique and independent factor of swallowing disorder in patients with COPD.

We also studied the utility of SMI and tongue pressure. Our results show that tongue pressure measurement is not useful for differentiating patients at risk of a COPD exacerbation, while SMI may be of use. Both are useful in detecting sarcopenia. Sarcopenia is one of the leading causes of dysphagia and aspiration in the elderly population.<sup>21</sup> It is understandable that a low SMI is correlated with the risk of a COPD exacerbation. However, dysphagia in COPD is known to be multifactorial, and sarcopenia is only one of the risk factors.<sup>7</sup> Furthermore, tongue pressure is only one small part of the systemic musculature. In addition, the oral coordination needed for tongue pressure measurement was difficult to achieve in some patients. Some showed great difficulty in accomplishing the task. We suspect that these may be the reasons why the tongue pressure was not useful in detecting risky phenotypes in patients with COPD.

Our study supports the recent understanding that dysphagia in COPD is multifactorial. The inability to take airway protective measures, breathing–swallowing discoordination, lung hyperinflation, breathlessness, gastroesophageal reflux, and sarcopenia may all be causes of aspiration and COPD exacerbations. This may be the

reason why, according to our previous study<sup>7</sup> and the current study, the RSST and I-SW% in 3 mL water were useful for detecting those at risk of an exacerbation. However, in the current medical technology, it is not possible to differentiate whether a certain episode of exacerbation was due to breathing–swallowing discoordination or not. Moreover, it is not possible to differentiate whether an exacerbation (or a lower respiratory tract infection) was due to an aspiration or not. Therefore, there is clinical importance in identifying those at risk of aspiration through screening and assessment methods.

Our findings are essential towards the next step in this area of interest: intervention. Ideally, intervention that improves multiple aspects of dysphagia may be the most effective type. In the past, McKinstry et al reported improvement in dysphagic COPD patients with patient education and adequate rehabilitation.<sup>22</sup> However, its effect on exacerbations of COPD and the prognosis of COPD patients remains unclear. More studies on intervention are needed.

The present study is associated with several limitations. First, this was a relatively small study that was performed in a single center, in which there was no healthy control group. Second, instrumental swallowing assessments such as videofluoroscopy or videoendoscopy were not performed. Third, breathing–swallowing coordination was evaluated in different procedures for 3 mL and 30 mL. Three milliliters of water were inserted using a syringe, and 30 mL was given in a cup. This was done according to the modified WST and WST, respectively. The syringe administration of water may have affected the swallowing pattern. Repetitive testing of the 30mL WST may have been informative. Additionally, to evaluate breathing–swallowing coordination in a more natural setting, the use of a cup (instead of a syringe) for different volumes of water may be a topic for future studies. To evaluate swallows as naturally as possible, it may be of interest to take measurements with the swallowing monitor during meals or while sleeping. However, this is not realistic in the daily clinic setting. An alternative may be to take measurements while performing the RSST.

This is the second study to investigate the utility of the swallowing monitor in detecting patients at risk of COPD exacerbations. Further studies to unravel the pathophysiology underlying dysphagia in patients with COPD are awaited.

## Conclusion

Breathing–swallowing coordination is independently related to the exacerbation of COPD. In addition to the presence of discoordination, the inability to produce an airway protection mechanism may contribute to an increased risk of aspiration and exacerbations.

## Acknowledgments

The authors would like to express their deepest gratitude to the following members of the Iizuka Hospital Department of Respiratory Medicine for their contribution to this study: Takuto Sueyasu, Saori Nishizawa, Miyuki Munechika, Kohei Yoshimine, Yuki Ko, Mina Yasuda, Hiromi Ide, Kosuke Tsuruno, and Noriyuki Ebi. We also thank Dr. Susumu Sato for kindly contributing the artwork showing the swallowing monitor.

## Disclosure

The authors have no conflicts of interest in connection with this article.

## References

- Steidl E, Ribeiro CS, Gonçalves BF, Fernandes N, Antunes V, Mancopes R. Relationship between dysphagia and exacerbations in chronic obstructive pulmonary disease: a literature review. *Int Arch Otorhinolaryngol.* 2015;19:74–79. doi:10.1055/s-0034-1376430
- Nagami S, Oku Y, Yagi N, et al. Breathing-swallowing discoordination is associated with frequent exacerbations of COPD. *BMJ Open Respir Res.* 2017;4:e000202. doi:10.1136/bmjresp-2017-000202
- Kobayashi S, Kubo H, Yanai M. Impairment of the swallowing reflex in exacerbations of COPD. *Thorax.* 2007;62:1017. doi:10.1136/thx.2007.084715
- Terada K, Muro S, Ohara T, et al. Abnormal swallowing reflex and COPD exacerbations. *Chest.* 2010;137:326–332. doi:10.1378/chest.09-0482
- Gross RD, Atwood CW Jr, Ross SB, Olszewski JW, Eichhorn KA. The coordination of breathing and swallowing in chronic obstructive pulmonary disease. *Am J Respir Crit Care Med.* 2009;179:559–565. doi:10.1164/rccm.200807-1139OC
- Cvejic L, Harding R, Churchward T, et al. Laryngeal penetration and aspiration in individuals with stable COPD. *Respirology.* 2011;16:269–275. doi:10.1111/j.1440-1843.2010.01875.x
- Yoshimatsu Y, Tobino K, Sueyasu T, et al. Repetitive saliva swallowing test predicts COPD exacerbation. *Int J Chron Obstruct Pulmon Dis.* 2019;14:2777–2785. doi:10.2147/COPD.S226268
- Guerri R, Gayete A, Balcells E, et al. Mass of intercostal muscles associates with risk of multiple exacerbations in COPD. *Respir Med.* 2010;104:378–388.
- Maeda K, Akagi J. Decreased tongue pressure is associated with sarcopenia and sarcopenic dysphagia in the elderly. *Dysphagia.* 2015;30:80–87. doi:10.1007/s00455-014-9577-y
- Vogelmeier CF, Criner GJ, Martinez FJ, et al. Global strategy for the diagnosis, management, and prevention of chronic obstructive lung disease 2017 report. GOLD executive summary. *Am J Respir Crit Care Med.* 2017;195:557. doi:10.1164/rccm.201701-0218PP

11. Kim V, Aaron SD. What is a COPD exacerbation? Current definitions, pitfalls, challenges and opportunities for improvement. *Eur Respir J*. 2018;52:1801261. doi:10.1183/13993003.01261-2018
12. Anthonisen NR, Manfreda J, Warren CP, Hershfield ES, Harding GK, Nelson NA. Antibiotic therapy in exacerbations of chronic obstructive pulmonary disease. *Ann Intern Med*. 1987;106:196–204. doi:10.7326/0003-4819-106-2-196
13. Hidetaka W, Jun K. Translation, reliability, and validity of the Japanese version of the 10-item Eating Assessment Tool (EAT-10) for the screening of dysphagia. *JJSPEN*. 2014;29:871–876. [in Japanese].
14. Kusano M, Shimoyama Y, Sugimoto S, et al. Development and evaluation of FSSG: frequency scale for the symptoms of GERD. *J Gastroenterol*. 2004;39:888–891. doi:10.1007/s00535-004-1417-7
15. Oguchi K, Saitoh E, Baba M, Kusudo M, Tanaka T, Onogi K. The repetitive saliva swallowing test (RSST) as a screening test of functional dysphagia (2). Validity of RSST. *Jpn J Rehabil Med*. 2000;38:383–388. [in Japanese].
16. Kubota T, Mishima H, Hanada M, Namba I, Kojima Y. Dysphagia paralytica in cerebrovascular disease: screening test and its clinical application. *Sogo Rihabiriteshon*. 1982;10:271–276. [in Japanese].
17. Hayashi R, Tsuga K, Hosokawa R, Yoshida M, Sato Y, Akagawa Y. A novel handy probe for tongue pressure measurement. *Int J Prosthodont*. 2002;15:385–388.
18. Yagi N, Oku Y, Nagami S, et al. Inappropriate timing of swallow in the respiratory cycle causes breathing-swallowing discoordination. *Front Physiol*. 2018;8:676. doi:10.3389/fphys.2017.00676
19. Mokhlesi B, Logemann JA, Rademaker AW, Stangl CA, Corbridge TC. Oropharyngeal deglutition in stable COPD. *Chest*. 2002;121:361–369. doi:10.1378/chest.121.2.361
20. Cassiani RA, Santos CM, Baddini-Martinez J, Dantas RO. Oral and pharyngeal bolus transit in patients with chronic obstructive pulmonary disease. *Int J Chron Obstruct Pulmon Dis*. 2015;10:489–496. doi:10.2147/COPD.S74945
21. Fujishima I, Fujiu-Kurachi M, Arai H, et al. Sarcopenia and dysphagia: position paper by four professional organizations. *Geriatr Gerontol Int*. 2019;19:91–97. doi:10.1111/ggi.13591
22. McKinstry A, Tranter M, Sweeney J. Outcomes of dysphagia intervention in a pulmonary rehabilitation program. *Dysphagia*. 2010;25:104–111. doi:10.1007/s00455-009-9230-3

## International Journal of Chronic Obstructive Pulmonary Disease

Dovepress

### Publish your work in this journal

The International Journal of COPD is an international, peer-reviewed journal of therapeutics and pharmacology focusing on concise rapid reporting of clinical studies and reviews in COPD. Special focus is given to the pathophysiological processes underlying the disease, intervention programs, patient focused education, and self management

protocols. This journal is indexed on PubMed Central, MedLine and CAS. The manuscript management system is completely online and includes a very quick and fair peer-review system, which is all easy to use. Visit <http://www.dovepress.com/testimonials.php> to read real quotes from published authors.

Submit your manuscript here: <https://www.dovepress.com/international-journal-of-chronic-obstructive-pulmonary-disease-journal>