

Citrus limon Peel Essential Oil–Induced Type IV Hypersensitivity Reaction

This article was published in the following Dove Press journal:
Journal of Experimental Pharmacology

Fatma Yasmin Mahdani ¹ 
 Adiastuti Endah Parmadiati ¹ 
 Diah Savitri Ernawati ¹ 
 Hasrul Husain ²
 Sekar Alifa Putri Ekaperdana ³
 Ulyasari Rachmaningayu ³
 Priyo Hadi ¹
 Hening Tuti Hendarti ¹
 Meircurius Dwi Condro
 Surboyo ¹ 

¹Department of Oral Medicine, Faculty of Dental Medicine, Universitas Airlangga, Surabaya 60132, Indonesia; ²Oral Medicine Specialist Program, Faculty of Dental Medicine, Universitas Airlangga, Surabaya 60132, Indonesia; ³Bachelor Program, Faculty of Dental Medicine, Universitas Airlangga, Surabaya 60132, Indonesia

Background: Several studies have shown anti-inflammatory, anti-microbial, antifungal, and antioxidant effects from *Citrus limon*–peel essential oil (CI-PEO). CI-PEO can be developed as topical drugs for oral ulceration because of its potential active components. There have been no studies on the topical application of CI-PEO inducing type IV hypersensitivity reaction.

Purpose: To investigate the potential of CI-PEO from Batu City to induce type IV hypersensitivity reactions based on clinical changes, lymphocytes, macrophages, IFN γ , and IL10 expression.

Methods: This study was adapted from a guinea pig maximization-test method in Indonesia and the guidance of ISO 10,993-10:2010, and conducted on 20 guinea pigs (*Cavia cobaya*) divided into a control group and a treatment group. The treatment group was given CI-PEO and the control group CMC-Na. Clinical changes were observed, then tissue specimens taken for hematoxylin–eosin and immunohistochemistry staining.

Results: There were no clinical changes after exposure. Lymphocyte and macrophage numbers and IFN γ and IL10 expression increased in the treatment group compared to the control group ($p=0$).

Conclusion: CI-PEO can induce type IV hypersensitivity reactions in guinea pigs based on cellular and molecular cytokines, but there are no clinical changes after topical application.

Keywords: *Citrus limon*, essential oil, type IV hypersensitivity, macrophages, lymphocytes, interferon gamma, interleukin 10

Introduction

Lemon (*Citrus limon*) is one of the plants that is very useful for health and comes from Southeast Asia, with its tropical and subtropical climates.¹ One of the places for lemonade plantations in Indonesia is Batu City, East Java Province, located in an active volcanic area, such as Bromo, Tengger, and Semeru, which make land in this area fertile. Batu is located on a plateau, so it has low temperatures and high humidity. Such climate conditions are very suitable for agricultural development, especially horticulture.²

C. limon is one of the many herbal ingredients that have been studied for use in alternative medicine, including in Indonesia, and has been widely tested for antibacterial, antifungal, anti-inflammatory, antiviral, antiseptic, anticancer, anti-diabetes, and wound-healing properties.^{3–6} *C. limon* peel (CI-P) contains 6% essential oil (EO). These EOs contain bioactive compounds, such as limonene, up to 64%–90%, which are believed to have anti-inflammatory activity and low toxicity.^{1,5,7–10}

Correspondence: Fatma Yasmin Mahdani
 Department of Oral Medicine, Faculty of Dental Medicine, Campus A Universitas Airlangga, 47 Jalan Prof Dr Moestopo, Surabaya 60132, East Java–Indonesia,
 Tel +62-31-503-0255
 Fax +6231 5020256
 Email fatmayasminmahdani@fkg.unair.ac.id

According to the World Health Organization (WHO), plants are the best source for various types of drugs. The WHO estimates that around 3–4 billion people use herbal medicine and as many as 80% of individuals from developing countries use traditional medicines with basic ingredients from plants. Therefore, various types of plants are examined to investigate their usefulness, safety, and efficiency. Every material to be used as medicine must go through the biocompatibility-test phase to assess whether the material causes detrimental effects on the body.^{11–13}

One of the biocompatibility tests as per the US Food and Drug Administration (FDA) and International Organization for Standardization (ISO) that can be done is to assess the safety level of a material applied topically. This is a sensitization test that looks at the potential of the material to cause type IV hypersensitivity reactions. The sensitization test recommended by the FDA and ISO for research is the guinea pig maximization test using Freund's complete adjuvant. CI-PEO has shown the ability to inhibit fungal growth, eg, that of *Candida albicans*, and increase healing of oral ulcers,^{14,15} but the potential to induce hypersensitivity has not been observed. There have been no studies done on the topical use of CI-PEO effecting type IV hypersensitivity reactions by observing the clinical changes and expression of cytokines involved.

The aims of this research were to investigate the potential of CI-PEO to induce type IV hypersensitivity reactions. Type IV reactions depend on the interaction of antigens with T lymphocytes, called delayed-type hypersensitivity. IFN γ is one of the cytokines that play a role at the beginning of the type IV hypersensitivity process, and involves macrophages and lymphocytes as indicators of erythema and edema. Analysis of the potential of CI-PEO to cause type IV hypersensitivity reactions is based on clinical changes, such as erythema and edema, then further alteration in the number of macrophages and lymphocytes by hematoxylin–eosin staining and IFN γ and IL10 expression by immunohistochemistry staining.^{12,16}

Methods

This study was performed in strict accordance with the *Guide for the Care and Use of Laboratory Animals*, and the National Health Research and Development Ethics Standards and Guidelines Council (2017), Ministry of Health, Republic of Indonesia. Ethical clearance was obtained by the Universitas Airlangga Faculty of Dental Medicine from the Health Research Ethical Clearance Commission ((022/HRECC.FODM/III/2018).

Citrus limon Peel Essential Oil

The *C. limon* was bought at Balai Penelitian Tanaman Jeruk dan Buah Subtropika Batu. EO was extracted from its peel using steam distillation at the Biochemistry Laboratory, Faculty of Science and Technology, Universitas Airlangga. Five kilograms *C. limon* peel was washed and put in a distillation flask, transferred to an Erlenmeyer flask to separate the EO (300 mL) and water (70 mL). Steam distillation was done for 10 hours. The of distillation then had *n*-hexane (100 mL) solvent added through a separating funnel to extract the EO in the distillation mixture, the water removed, then put in a rotary vapor and heated at 50°C until the hexane had evaporated completely. The final volume of CI-CEO obtained was 270 mL. The CI-PEO was obtained at a concentration of 100%, then diluted using 3% carboxymethyl cellulose–sodium (CMC-Na) powder until concentrations reached 1.56%, 0.78%, and 0.39%.

Component Analysis of CI-PEO

To find out the compounds contained in CI-PEO used in this study, gas chromatography–mass spectrometry (GC-MS) was performed at the Faculty of Pharmacy, Airlangga University. CI-PEO was analyzed after being extracted twice with dichloromethane (pure analysis; Merck) The 0.4 μ L obtained was then analyzed using GC-MS model 6890N equipped with an inert MSD 5973 MS detector (Agilent Technologies, Santa Clara, CA, USA). A HP-5MS UI column detector (polyethylene glycol, 30 m \times 0.25 mm, 0.25 μ m; J&W Scientific). The temperature of the injector was 230°C. The carrier gas was helium at a constant flow rate of 1 mL/min. The initial oven temperature of the column was raised from 40° to 300°C at 10°C/min, then maintained for 4 minutes at 300°C. The MS-detector conditions were a capillary direct–interface temperature of 270°C, MS source temperature 230°C, and MS quad temperature 150°C. Identification of the individual constituents was based on comparison of mass spectra and retention-time indices of authentic reference compounds stored in the NIST17 MS data library.

Type IV Hypersensitivity Model

This research used healthy young (2–3 months), male adult guinea pigs (*Cavia cobaya*) weighting 300–500 g that had been acclimated for 2 weeks and were placed individually in single cages. CI-PEO testing was done in two phases: called preliminary and main tests. The preliminary test

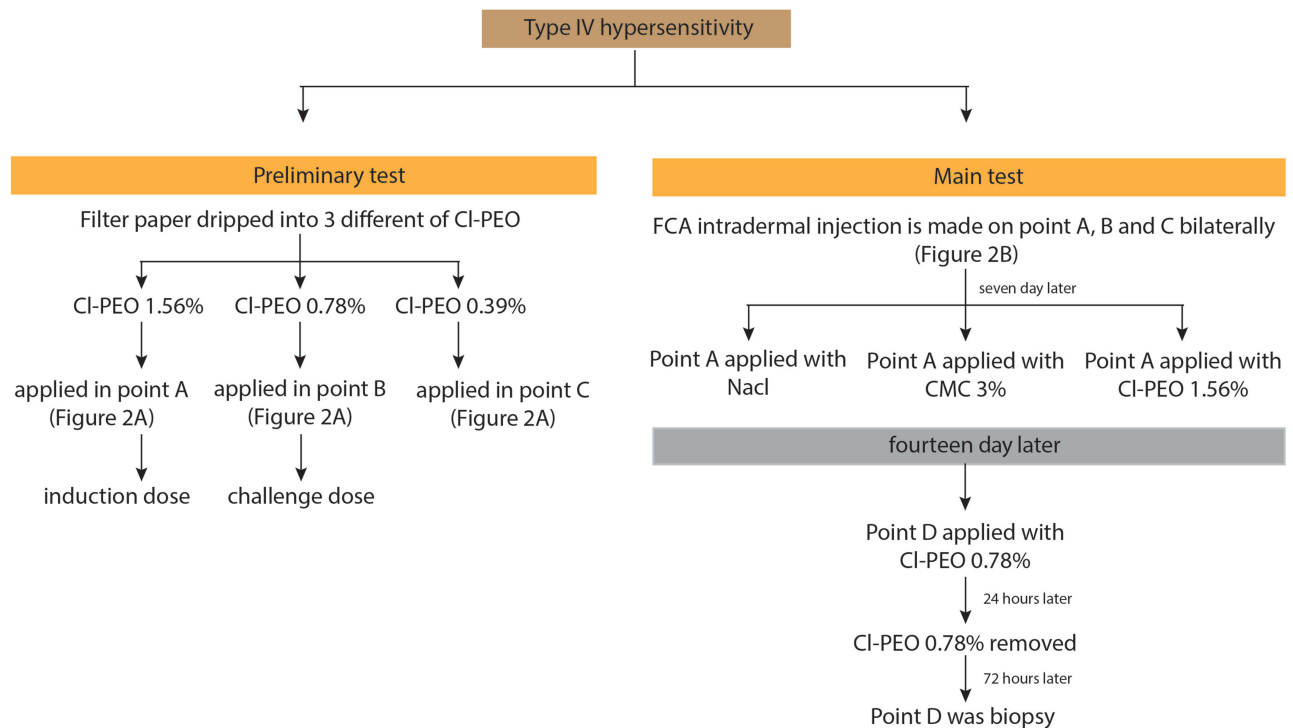


Figure 1 The diagram of CI-PEO test in animal.

was done with injected CI-PEO to determine challenge and induction doses. The main test was done with applied topical CI-PEO (Figure 1). Twenty *C. cobaya* were divided into treatment and control groups based on the minimum number of samples according to the of ISO guidance 10,993-10:2010 for in vivo non-clinical toxicity testing. At 24 hours before intradermal induction, the intrascapular region was shaved, then an injection of Freund's complete adjuvant was made on point C bilaterally. There were three points injected, shown in Figure 2A.

Seven days later, points A, B, and C had physiological solution (NaCl) and CMC 3% (control group) and CI-PEO 1.56% (treatment group) applied topically, then covered with occlusive dressing and elastic bandage for 24 hours (Figure 1). Fourteen days later (21 days after injection of points A, B, and C), the challenge stage was carried out on point D (Figure 2B) with topically applied CI-PEO 0.78% (treatment group), and physiological solution (NaCl) and CMC 3% (control group), then covered with occlusive dressings and elastic bandages. After 24 hours, occlusive dressings and elastic bandages were opened, then observed for 72 hours. After 72 hours, skin tissue at point D was biopsied. Histopathology examination was carried out to analyze the number of macrophages and lymphocytes with hematoxylin (CI 75,290; Merck, Germany) and eosin

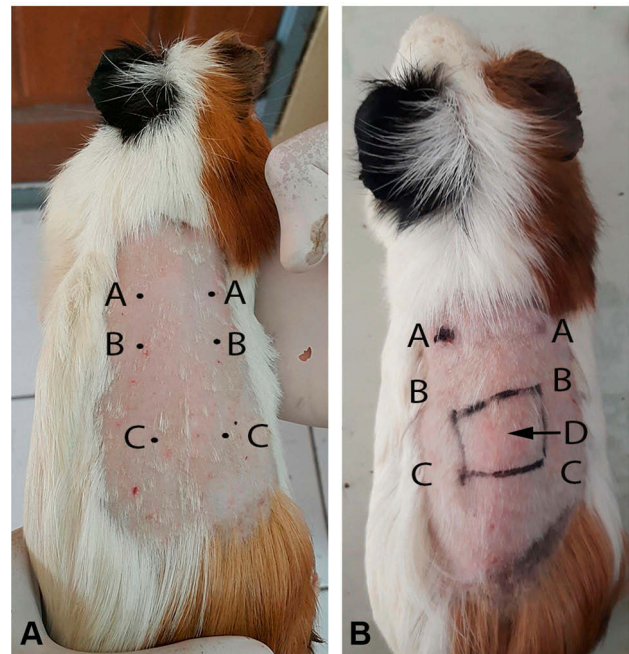


Figure 2 Type IV hypersensitivity model induced FCA in intrascapular region. (A) Point (AC) in main test. (B) applied topically CI-PEO 0.78% (treatment group) and physiological solution (NaCl) and CMC 3% (control group) in point (D).

staining (C.I. 45,380, Merck, Germany). The immunohistochemistry was carried out to analyze IFN γ (purified anti-mouse IFN γ antibody; BioLegend, San Diego, CA, USA)

and IL10 (purified antihuman IL10 antibody; BioLegend) expression. All analysis used light microscopy with 400× magnification.

Statistical Analysis

Data are expressed as mean ± SD for each measurement. Data were then analyzed using independent *t*-tests (SPSS 24.0 for Windows) to determine significant differences ($p < 0.05$).

Results

Taxonomic Tests

Taxonomic tests were carried out on lemons at the Biochemistry Laboratory, Faculty of Science and Technology, Universitas Airlangga as the first step before all other tests were performed.

Gas Chromatography–Mass Spectrometry

On GC-MS testing, 24 components were identified in Cl-PEO (Table 1). The dominant component was D-limonene (75.02%), followed by linalool (5.63%), citral A (4.41%), citral B (3.68%), and limonene oxide (0.94%), and 19 other components with concentrations <1% (Table 1).

Clinical Features

Clinical intrascapular assessment of the in both groups at point D assessed using the Magnusson–Kligman test after 21 days showed normal features. After topical application of Cl-PEO 0.78%, point D showed no form of erythema or edema, indicators of type IV hypersensitivity reactions, at 48 and 72 hours.

Table 1 Components Analysis of *Citrus limon* Using GC-MS

No	RT	Name of Component	% Area
1	4.63	6-methyl-5-hepten-2-one	0.67
2	6.02	d-limonene	75.02
3	6.83	Linalool oxide	0.39
4	7.18	Trans-linalool oxide	0.38
5	7.68	Linalool	5.63
6	7.93	1,5-dimethylbicyclo[3,2,1]octane	0.37
7	8.08	Cis-limonene oxide	0.57
8	8.19	Trans-limonene oxide	0.94
9	9.22	2,4,6-Trimethyl-1,3,6-heptatriene	0.79
10	9.50	Decanal	0.28
11	10.12	z-citral	3.68
12	10.63	e-citral	4.41
13	12.21	Geranyl acetate	0.33
14	12.60	Isolavandulal	0.82
15	12.82	α-bergamotene	0.38
16	13.76	β-bisabolene	0.63
17	15.39	2,7-dimethyl-2,6-octadiene	0.24
18	20.76	2,3-dihydro-benz[d]-1,3-isothiazol-2-one	0.12
19	20.87	6-hydroxy-2,7,7-trimethylcyclohept-2-enone	1.11
20	21.01	(z)-4-(1,5,9-trimethyl-4,8-decadienyl)-3-cyclohexen-1-one	0.44
21	21.40	Trans-2-methyl-2(4-methyl-3-pentenyl)-cyclopropanecarboxaldehyde	0.23
22	36.80	Ethyl 1-(2'-2'-dimethoxyethyl)-5-methoxy-2-methyl-1H-Benz(g) indole-3-carboxylate	0.43
23	40.23	t-butyl dimethyl-(12-methyleicocyloxy)silane	0.50
24	41.93	1,3-Dipalmitin trimethylsilyl ether	1.67

Number of Lymphocytes and Macrophages

Lymphocyte numbers in the control group (9.80 ± 2.25 , Figure 3A) were lower than the treatment group (16.1 ± 3.90 , Figure 3B). Macrophages numbers in the control group (10.5 ± 1.84 , Figure 4A) were lower than the treatment

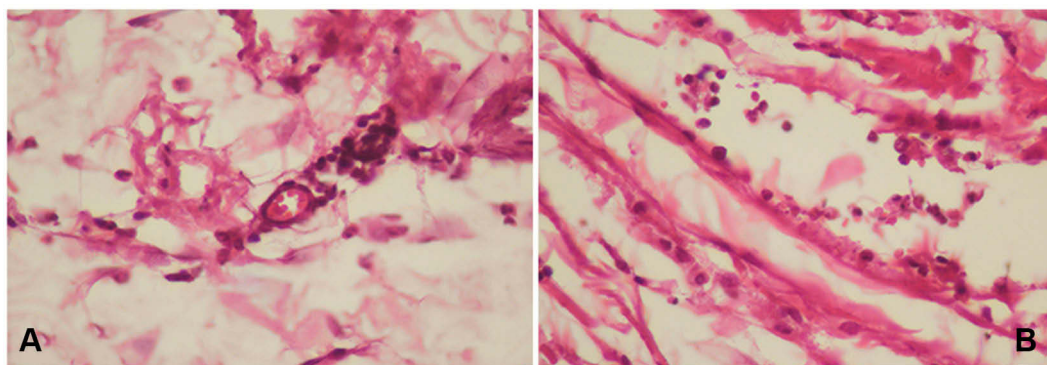


Figure 3 Number of lymphocytes using hematoxylin-eosin staining. (A) control group; (B) treatment group (observed using a light microscope with 400x magnification).

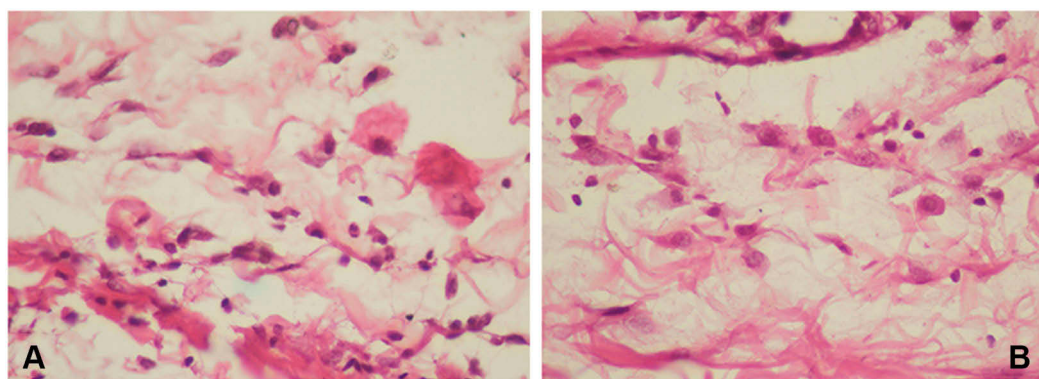


Figure 4 Number of macrophages using hematoxylin-eosin staining. (A) control group; (B) treatment group (observed using a light microscope with 400x magnification).

group (16.2 ± 1.81 , **Figure 4B**). The number of cells in the treatment group (**Figures 3B and 4B**) was higher than the control group (**Figures 3A and 4A**). There were significant differences among lymphocytes and macrophages between the control and treatment groups (**Table 2**).

IFN γ Expression

IFN γ expression appears as a blackish-brown image in macrophage cells. IFN γ expression in the control group (3.40 ± 0.69 , **Figure 5A**) was significantly lower than the treatment group (8.50 ± 1.36 , $p=0$, **Figure 5B**).

IL10 Expression

IL10 expression also appears as a blackish-brown image in macrophage cells. IL10 expression in the control group (9.60 ± 1.65 , **Figure 6A**) was lower than the treatment group (20.40 ± 4.40 , $p=0$, **Figure 6B**). There were significant differences in IFN γ and IL10 expression between the control and treatment groups (**Table 2**).

Discussion

C. limon is part of the Rutaceae family. EOs in lemon are obtained from the outer portion of the skin.¹⁷ It has been

shown in various studies that EOs of lemon peel have antimicrobial, anti-inflammatory, and antifungal effects.^{5,6,14,18,19} Although the EOs of lemon peel come from plants and are considered a natural ingredient, a common misunderstanding is that the product is truly safe. Some unwanted reactions from this oil that occur on the skin have been reported, especially when this oil has been used often.^{13,20,21}

In this research, the highest bioactive-compound concentration in Cl-PEO was D-limonene (75.02%), followed by linalool (5.63%), citral A (4.41%), citral B (3.68%), and limonene oxide (0.94%). These concentrations may differ among lemons. Variations in composition and concentration of constituent chemical compounds, both qualitatively and quantitatively, are caused by intrinsic and extrinsic factors. Intrinsic factors are related to such variables as time of planting and fertilization, interactions with the environment, including the type of soil and climatic conditions, maturity, and harvest time of the plant. Extrinsic factors are related to extraction methods, environment, duration of extraction procedures, storage methods, and dehydration procedures.²¹

D-limonene, the main component, had an important role in this research. D-limonene is a chemical from the terpene class contained in most cosmetics and detergents sold throughout the world. In its unoxidized form, this substance has been reported to be a weak allergen. However, when contaminated with free air, this substance will auto-oxidize, making it highly allergenic.²² In various studies, it has been shown that D-Limonene, citral, and linalool have greater effect in individuals with dermatitis or a history of allergies such that they can cause type IV hypersensitivity reactions.²³

Type IV hypersensitivity occurs in two phases: the sensitization phase involving activation of innate immunity, and the elicitation phase in the form of adaptive immunoactivity. In the sensitization phase, allergens will be recognized and

Table 2 Mean and Standard Deviation and Significant Level

	Control Group	Treatment Group	Significant Level
lymphocytes	9.80 ± 2.25	16.1 ± 3.90	0.000
macrophages	10.5 ± 1.84	16.2 ± 1.81	0.000
IFN- γ expression	9.60 ± 1.65	20.40 ± 4.40	0.000
IL-10 expression	3.40 ± 0.69	8.50 ± 1.36	0.000

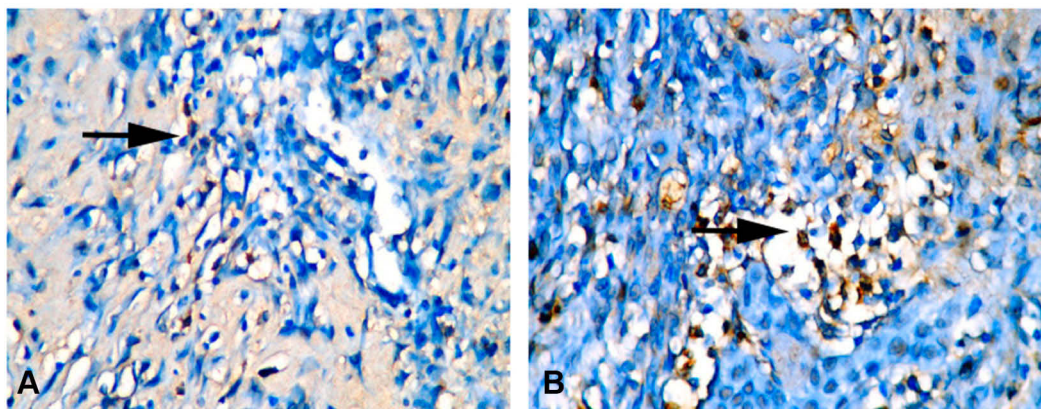


Figure 5 IFN- γ expression in macrophages (black arrow). (A) control group; (B) treatment group (observed using a light microscope with 400x magnification).

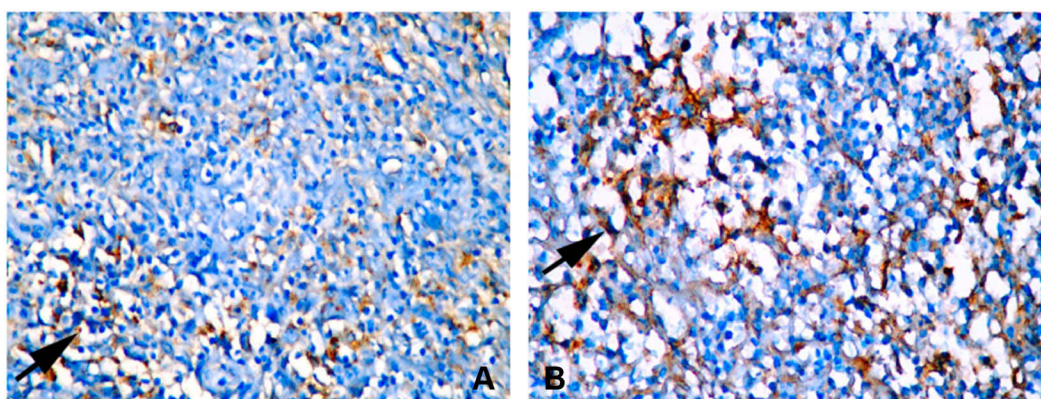


Figure 6 IL-10 expression in macrophages (black arrow). (A) control group; (B) treatment group (observed using a light microscope with 400x magnification).

phagocytosed by dendritic cells, which act as antigen-presenting cells. Dendritic cells that carry allergens migrate to regional lymph nodes and cause recruitment of specific T cells into the bloodstream and sensitization processes. At this stage, specific T cells will become memory T cells that will be sensitive to subsequent exposure to the antigen. The sensitization phase usually lasts 1–2 weeks after antigen exposure.²⁴ In the next phase (elicitation), dendritic cells phagocytose allergens, process these allergens, and present them on the surface of major histocompatibility–complex class II molecules, and will then be introduced to T-helper cells. These cells will produce IFN γ , which will activate more macrophages. Macrophages will also produce proinflammatory cytokines, such as IL1, IL6, and TNF- α , which trigger the manifestation of type IV hypersensitivity reactions in skin exposed to antigens, namely erythema and edema. Therefore, macrophages, lymphocytes, and IFN γ were selected as the main indicators in this study.^{25,26}

In this study, the application of Cl-PEO led to numbers of lymphocytes and macrophages and IFN γ expression increasing. In the elicitation phase of hypersensitivity, increased numbers of lymphocytes and macrophages, and higher expression of IFN γ cytokines will manifest in such clinical signs as edema and erythema. However, we observed no signs of inflammation in *C. cobaya* after application of Cl-PEO. This was probably due to the activity of proinflammatory cytokines being inhibited well by anti-inflammatory cytokine activity, in this case IL10.

An interesting result of this study was that examination of the expression of the anti-inflammatory cytokine IL10 showed a significant increase. The increase in the number of macrophages here not only functioned in the proinflammatory process but also in the anti-inflammatory process by producing IL10. In previous studies, it has been found that D-limonene and linalool induces macrophages to produce even more IL10.^{27,28} Limonene can increase the

amount of T_{reg} cells in tissue, which function to modulate both proinflammatory and anti-inflammatory cytokines. T_{reg} can induce monocyte differentiation into the M2-macrophage phenotype (anti-inflammatory) and inhibit induction of the M1 phenotype (proinflammatory) such that the inflammatory process can be stopped. Linalool can induce macrophages to produce IL10.²⁹

It can be concluded that even though CI-PEO was able to induce type IV hypersensitivity reactions in guinea pigs, based on cellular and molecular cytokines, there were no clinical feature changes after topical application. Cellular and molecular cytokines in a hypersensitivity reaction, with increased lymphocyte and macrophage numbers and IFN γ , can be suppressed by the activation of the mainly anti-inflammatory cytokine IL10. This is the reason no change clinical examination after topical application both erythema and edema which usually occurs in type IV hypersensitivity reactions.

Funding

This study was funded by the Faculty of Dental Medicine, Universitas Airlangga, Surabaya, Indonesia, 2019 (Rector Universitas Airlangga decision 1408/UN3/2019).

Disclosure

All contributing authors declare no conflicts of interest.

References

- Dev C, Shrivastava R, Raj S, Nidhi. Basketful benefit of Citrus Limon. *Int Res J Pharm*. 2016;7(6):1–4. doi:10.7897/2230-8407.07653
- Kambuaya B, Yuwono A, Rachmawaty E, Mulyanto HS, Widayati T. *Climate Change Risk and Adaptation Assessment Greater Malang Synthesis Report*. Jakarta: Ministry of Environment Jalan; 2012:9–14.
- Tanjung KA, Sudarno SL. Efektivitas ekstrak kulit jeruk lemon (Citrus limonum) terhadap daya hambat pertumbuhan *Aeromonas hydrophila* secara in vitro. *Berk Ilm Perikan*. 2008;3(1):89–93.
- Ahmad M, Ansari M, Alam A, Khan T. Oral dose of citrus peel extracts promotes wound repair in diabetic rats. *Pakistan J Biol Sci*. 2013;16(20):1086–1094. doi:10.3923/pjbs.2013.1086.1094
- Surboyo MDC, Mahdani FY, Savitri DS, et al. Number of macrophages and transforming growth factor β expression in Citrus limon L. Tlekung peel oil-treated traumatic ulcers in diabetic rats. *Trop J Pharm Res*. 2019;18(7):1427–1433.
- Ganesha R, Hernawan I, Hendarti HT, et al. Expression of FGF-2 and fibronectin in citrus limon fruit peel malang essential oil gel treated traumatic ulcer in diabetic wistar rats (*Rattus norvegicus*). *Res J Pharm Technol*. 2019;12(July):5958.
- Sun J. D-limonene: safety and clinical applications. *Altern Med Rev*. 2007;12(3):259–264.
- Huang Y, Ho S. Polymethoxy flavones are responsible for the anti-inflammatory activity of citrus fruit peel. *Food Chem*. 2010;119(3):868–873. doi:10.1016/j.foodchem.2009.09.092
- Lorente J, Vegara S, Martí N, et al. Chemical guide parameters for Spanish lemon (*Citrus limon* L.) Burm.) juices. *Food Chem*. 2014;162(2014):186–191. doi:10.1016/j.foodchem.2014.04.042
- Gosslau A, Yu K, Ho C, Li S. Anti-inflammatory effects of characterized orange peel extracts enriched with bioactive polymethoxyflavones. *Food Sci Hum Wellness*. 2014;3(1):26–35. doi:10.1016/j.fshw.2014.02.002
- WHO. *General Guidelines for Methodologies on Research and Evaluation of Traditional Medicine* World Health Organization. Geneva: World Health Organization; 2000:1–18 p.
- Services USD of H and H. Use of International Standard ISO 10993-1. *Biological Evaluation of Medical Devices - Part 1: Evaluation and Testing Within a Risk Management Process*. Rockville, USA: Food and Drug Administration; 2016.
- WHO. *Who Global Report on Traditional and Complementary Medicine 2019*. Ghebreyesus TA, editor. Luxemburg; 2019.
- Hernawan I, Radhitia D, Hadi P, Ernawati DS. Fungal inhibitory effect of citrus limon peel essential oil on candida albicans. *Dent J*. 2015;48(2):84–88.
- Prabajati R, Hernawan I, Hendarti HT. Effects of citrus limon essential oil (*Citrus limon* L.) on cytomorphometric changes of *Candida albicans*. *Dent J*. 2017;50(1):43. doi:10.20473/j.djmk.v50.i1.p43-48
- Vinay Kumar AK, Abbas JCA. *Robbins Basic Pathology*. Vinay Kumar AK, Abbas JCA, editor. 10th Editi. Philadelphia, Pennsylvania:Elsevier; 2018.
- Jain N, Sharma M. Evaluation of citrus lemon essential oil for its chemical and biological properties against fungi causing dermatophytic infection in human beings. *Anal Chem Lett*. 2017;7(3):402–409. doi:10.1080/22297928.2017.1349620
- Khazal N, Hindi K, Adil Z, Chabuck G. Antimicrobial activity of different aqueous lemon extracts. *J Appl Pharm Sci*. 2013;3(06):8–74.
- Kummer R, Fachini-Queiroz FC, Estevão-Silva CF, et al. Evaluation of anti-inflammatory activity of citrus latifolia Tanaka essential oil and limonene in experimental mouse models. *Evidence-Based Complement Altern Med*. 2013;2013:1–8. doi:10.1155/2013/859083
- Plumlee KH, Ms DVM, Dacvim D. Citrus Oils. In: *Small Animal Toxicology*. Third ed. UK: Wiley-Blackwell, A John Wiley & Sons, Inc., Publication; 2013:513–515.
- Tjahyono N, Parmadianti AE, Mahdani FY. Cytotoxicity test of citrus limon peel essential oil in human gingival fibroblast. *Oral Med Dent J*. 2017;9(1):53–60.
- Audrain H, Kenward C, Lovell CR, et al. Allergy to oxidized limonene and linalool is frequent in the. *Br J Dermatol*. 2014;171(2014):292–297. doi:10.1111/bjd.13037
- Tisserand R, Young R. *Essential Oil Safety*. 2nd ed. Edinburg: Churchill Livingstone Elsevier; 2014:187–482.
- Schmidt M, Goebeler M. Immunology of metal allergies. *J Ger Soc Dermatology*. 2015;653–659.
- Geha R, Notarangelo L. Case studies in immunology: a clinical companion. In: *Pediatric and Developmental Pathology*. Vol. 9. 6th ed. New York: Garland Science, Taylor & Francis Group; 2012.
- Coico R, Sunshine G. *Immunology: A Short Course*. 7th ed. Vol. 53. Wiley online library United Kingdom: Wiley Blackwell; 2015:183,259.
- Ramalho TR, Filgueiras LR, De Oliveira MTP, et al. Gamma-Terpinene modulation of LPS-stimulated macrophages is dependent on the PGE2/IL-10 Axis. *Planta Med*. 2016;82(15):1341–1345. doi:10.1055/s-0042-107799
- Plastina P, Apriantini A, Meijerink J, Witkamp R, Gabriele B, Fazio A. In vitro anti-inflammatory and radical scavenging properties of chinotto (*Citrus myrtifolia* Raf.) essential oils. *Nutrients*. 2018;10(6):1–13. doi:10.3390/nu10060783
- Turabelidze A, DiPietro A. Inflammation and Wound Healing. In: Larjava H, editor. *Oral Wound Healing: Cell Biology and Clinical Management*. UK: Wiley-Blackwell, A John Wiley & Sons, Inc., Publication; 2012:47–48.

Journal of Experimental Pharmacology

Dovepress

Publish your work in this journal

The Journal of Experimental Pharmacology is an international, peer-reviewed, open access journal publishing original research, reports, reviews and commentaries on all areas of laboratory and experimental pharmacology. The manuscript management system is completely

online and includes a very quick and fair peer-review system. Visit <http://www.dovepress.com/testimonials.php> to read real quotes from published authors.

Submit your manuscript here: <https://www.dovepress.com/journal-of-experimental-pharmacology-journal>