

# Efficacy and Safety of Nab-Paclitaxel Plus S-1 versus Nab-Paclitaxel Plus Gemcitabine for First-Line Chemotherapy in Advanced Pancreatic Ductal Adenocarcinoma

This article was published in the following Dove Press journal:  
*Cancer Management and Research*

Yuan Zong  
Zhi Peng  
Xicheng Wang  
Ming Lu  
Lin Shen  
Jun Zhou 

Department of Gastrointestinal  
Oncology, Key Laboratory of  
Carcinogenesis and Translational  
Research (Ministry of Education/Beijing),  
Peking University Cancer Hospital &  
Institute, Beijing 100142, People's  
Republic of China

**Objective:** Nab-paclitaxel plus gemcitabine (nab-P/G) has been established as a standard first-line treatment in metastatic pancreatic ductal adenocarcinoma (PDAC). S-1, as an oral fluoropyrimidine derivative, demonstrated effective for PDAC. This study aimed to evaluate the efficacy and safety of first-line chemotherapy with nab-paclitaxel plus S-1 (nab-P/S) versus nab-P/G in patients with advanced PDAC.

**Methods:** Patients with advanced PDAC receiving nab-P/S (n = 65) or nab-P/G (n = 45) as first-line chemotherapy between November 2013 and June 2019 were reviewed.

**Results:** The objective response rate (ORR) and disease control rate were numerically higher with nab-P/S than with nab-P/G (38.5% vs 28.9%,  $P = 0.30$ , 73.8% vs 66.7%,  $P = 0.42$ , respectively). ORRs of the primary lesion were similar for both groups (30.8% and 22.2%,  $P = 0.32$ ). The median progression-free survival and overall survival were comparable between the two groups (5.5 vs 5.7 months,  $P = 0.34$ , 10.2 vs 11.3 months,  $P = 0.74$ , respectively). Nab-P/S was associated with a numerically lower risk of adverse events, especially hematologic adverse events.

**Conclusion:** Nab-P/S could be a convenient alternative with similar efficacy and a favorable safety profile compared with nab-P/G as first-line chemotherapy for advanced PDAC, as well as an option for neoadjuvant therapy.

**Keywords:** advanced pancreatic ductal adenocarcinoma, nab-paclitaxel, S-1, gemcitabine, objective response rate

## Introduction

Pancreatic cancer is an extremely serious disease with a poor prognosis, and the 5-year survival rate can be as low as 6%.<sup>1</sup> It is estimated that 90,100 Chinese people were newly diagnosed with pancreatic cancer, and 79,400 died from it in 2015.<sup>2</sup> Only 20% of patients are eligible for initial resection when diagnosed with pancreatic cancer.<sup>1</sup> Chemotherapy options for patients with advanced pancreatic ductal adenocarcinoma (PDAC) are scarce.

Gemcitabine showed a modest benefit against 5-fluorouracil (5-FU) for patients with locally advanced or metastatic PDAC in a pivotal phase III study.<sup>3</sup> The addition of erlotinib to gemcitabine prolonged the marginal survival by 2 weeks.<sup>4</sup> Currently, fluorouracil, leucovorin and irinotecan plus oxaliplatin (FOLFIRINOX), and nab-paclitaxel plus gemcitabine (nab-P/G) are two regimens widely used for advanced

Correspondence: Jun Zhou  
Department of Gastrointestinal  
Oncology, Key Laboratory of  
Carcinogenesis and Translational  
Research (Ministry of Education/Beijing),  
Peking University Cancer Hospital &  
Institute, No. 52 of Fucheng Road,  
Haidian District, Beijing 100142, People's  
Republic of China  
Tel/Fax +86 10 8819 6561  
Email zhoujun\_dr555@163.com

PDAC. Both regimens demonstrated a significant survival advantage over gemcitabine. However, the objective response rate (ORR) was limited to 23–31.6% with increased grade 3 or 4 myelosuppression and peripheral neuropathy, resulting in rigorous patient selection criteria and low dose intensity with each agent.<sup>5,6</sup> S-1, as an oral fluoropyrimidine derivative, was proved to be an indication of pancreatic cancer in Japan in 2006. It showed good response rates ranging from 21.1% to 37.5% in the phase II studies for metastatic pancreatic cancers.<sup>7,8</sup> Monotherapy with S-1 is non-inferior to gemcitabine and superior to gemcitabine with respect to overall survival (OS) for advanced and postoperative disease, respectively.<sup>9,10</sup> It was associated with fewer hematologic adverse events, particularly in neutropenia, and presented a convenient oral alternative.<sup>9,10</sup> A synergetic effect with nab-paclitaxel plus S-1 (nab-P/S) was confirmed from preclinical models.<sup>11,12</sup> In two phase II studies in China, the new combination of nab-paclitaxel plus S-1 showed a remarkable ORR of 50.0–53.1% with good OS and favorable safety profiles as first-line therapy for advanced PDAC.<sup>13,14</sup>

Hence, we conducted this retrospective study to evaluate the efficacy and safety of first-line chemotherapy with nab-P/S versus nab-P/G in patients with advanced PDAC.

## Methods

### Patients

As the positive results of nab-P/G versus gemcitabine were published in October 2013, we identified patients with PDAC treated in our institution between November 2013 and June 2019 (Figure 1). We excluded 205 patients, but identified 110 eligible patients who met the following criteria: (1) histologically or cytologically confirmed PDAC, (2) had locally advanced or metastatic disease, and (3) received first-line chemotherapy of nab-P/S or nab-P/G. Baseline characteristics and clinical outcomes were retrieved from medical records. By reviewing medical records of eligible patients in our institution, we found the information on performance status for each patient may be inaccurate because they had been written by different residents depending on their subjective judgments over 6 years. We have discussed this problem and decided to use BMI as a replacement to objectively reflect the performance status, to some degree, at diagnosis.

The study was conducted in accordance with the Declaration of Helsinki (as was revised in 2013). The study was approved by Ethics Committee of Peking University Cancer Hospital & Institute and informed consent was taken from all the patients.

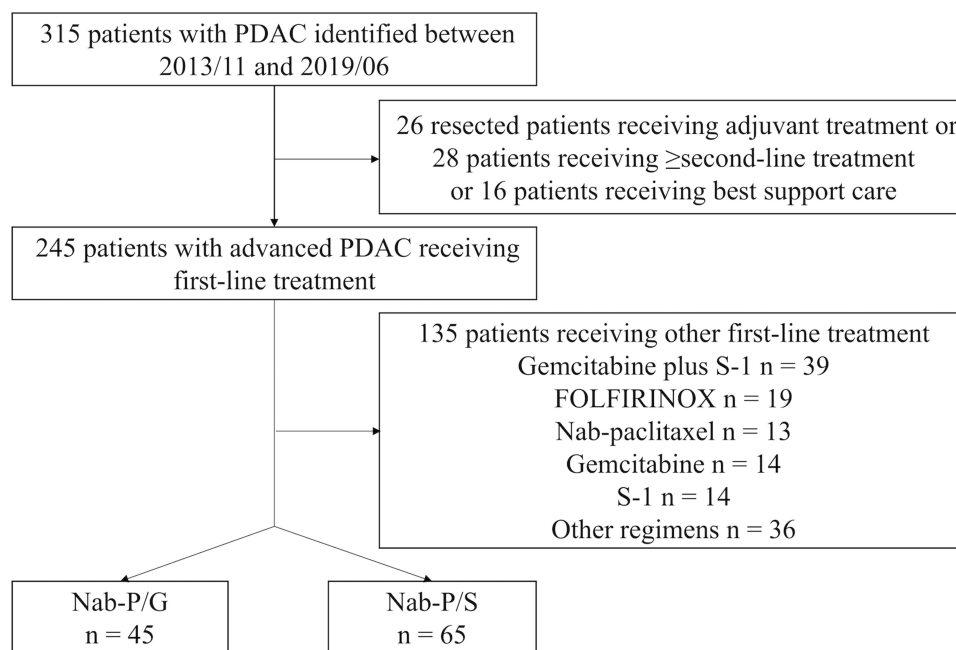


Figure 1 Study flow diagram.

## Treatment

Treatment options depended on the senior author's anecdotal clinical experiences or patients' decisions. In the nab-P/S group, patients received nab-paclitaxel at a dose of 125 mg/m<sup>2</sup> intravenously (IV) on day 1 plus S-1 orally twice daily at a dose according to the body surface area (BSA) (80 mg/d for BSA < 1.25 m<sup>2</sup>; 100 mg/d for BSA between 1.25 m<sup>2</sup> and 1.5 m<sup>2</sup>; 120 mg/d for BSA ≥ 1.5 m<sup>2</sup>) on day 1 through 7 of a 14-day cycle. In the nab-P/G group, patients received nab-paclitaxel at a dose of 125 mg/m<sup>2</sup> IV plus gemcitabine at a dose of 1000 mg/m<sup>2</sup> IV on days 1 and 8 of a 21-day cycle. We used the modified regimen of nab-P/G in our institution. The dose levels of nab-paclitaxel and gemcitabine used were based on the maximum-tolerated dose recommended in a previous phase I/II study,<sup>15</sup> and the Chinese Society of Clinical Oncology diagnosis and treatment guidelines for Chinese patients with pancreatic cancer. Treatments continued until halted by disease progression, unacceptable toxicity, or the discretion of the investigator or patient.

## Response and Toxicity Assessment

The primary endpoint was the ORR. The secondary endpoints included the ORR of the primary lesion, disease control rate (DCR), progression-free survival (PFS), OS, and safety. All patients were evaluated by computed tomography (CT) at baseline and every 6 weeks for tumor responses, including complete response (CR), partial response (PR), stable disease (SD), or progressive disease (PD). The tumor response was defined as inevaluable when patients had no response evaluation. The ORR and the ORR of primary lesions were assessed by the corresponding author and other senior authors according to Response Evaluation Criteria in Solid Tumors (RECIST) version 1.1. PFS was defined as the date of the initiation of chemotherapy until the date of disease progression determined using imaging or clinical examination or death. OS was defined as the date of the initiation of chemotherapy until the date of death or last follow-up. The last follow-up date was May 31, 2020. Adverse events were assessed and graded according to CTCAE version 4.0. Serum Carbohydrate antigen 19-9 (CA19-9) level was measured on day 1 of each cycle for both groups.

## Statistical Analysis

Patients' baseline characteristics were shown through descriptive analysis. Categorical variables were compared using a Chi-square test or Fisher's exact test. Continuous

variables were described as means (±SD) and compared using Student's *t*-test. PFS and OS were evaluated using the Kaplan–Meier method and compared with the Log-rank test. Variables with a *P* < 0.1 and treatment group were included in the Cox proportional hazards regression model for multivariate analysis.

Statistical tests were two-sided, and *P* < 0.05 was considered statistically significant. Statistical analyses were performed using SPSS version 25 (IBM, Chicago, IL) and GraphPad Prism 7 (La Jolla, Calif).

## Results

### Baseline Characteristics

From November 2013 to June 2019, a total of 110 patients (nab-P/S group n = 65, nab-P/G group n = 45) with locally advanced (12.7%) and metastatic (87.3%) PDACs were identified. The distribution of patients for each treatment during each year is shown in Figure 2. The median age was 62 years (range 36–72), and 58.2% (n = 64) were male. The details of the baseline characteristics are summarized in Table 1, with no significant difference between the two groups.

### Study Treatment

The median duration of treatment was 2.8 months (range 0.2–9.4) in the nab-P/S group and 2.6 months (range 0.2–8.2) in the nab-P/G group. The reasons for treatment discontinuation and subsequent therapy in nab-P/S versus nab-P/G group are shown in Table 2, including disease progression (55.4% vs 53.3%), investigator discretion (16.9% vs 15.6%), patient discretion (6.2% vs 13.3%), and loss to follow-up (21.5% vs 17.8%). In the nab-P/S group, 20 (30.8%) of 65

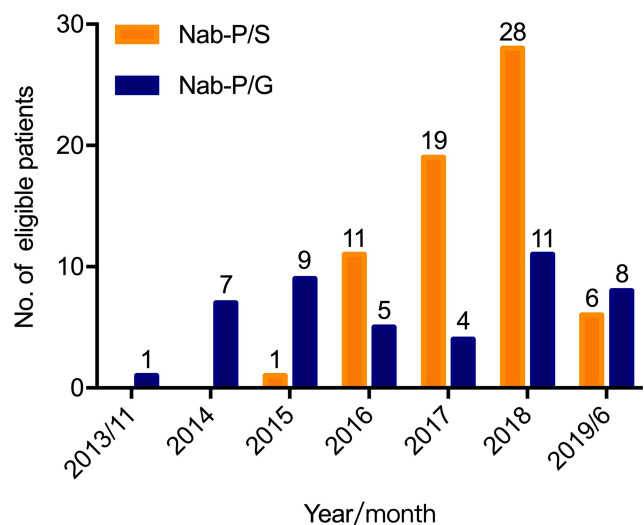


Figure 2 Distribution of patients for each treatment during each year.

**Table 1** Baseline Characteristics

Characteristics, n (%)	Nab-P/S n = 65	Nab-P/G n = 45
Age, years		
Mean ± SD	59.4±7.6	57.3±8.9
≤65	50 (76.9)	40 (88.9)
>65	15 (23.1)	5 (11.1)
Gender		
Male	41 (63.1)	23 (51.1)
Female	24 (36.9)	22 (48.9)
BMI, kg/m <sup>2</sup>		
<18.5	5 (7.7)	6 (13.3)
18.5–23.9	43 (66.2)	30 (66.7)
≥24	17 (26.2)	9 (20.0)
Tumor site of pancreas		
Head	22 (33.8)	18 (40.0)
Body/Tail	42 (66.2)	27 (60.0)
Overlapping lesion	1 (1.5)	0
Baseline CA19-9, U/mL		
Mean ± SD	11,321.9 ±27,734.0	19,006.1 ±60,792.7
Normal (0–37)	11 (16.9)	5 (11.1)
Elevated (>37)	54 (83.1)	40 (88.9)
Disease status		
Locally advanced (stage III)	9 (13.8)	5 (11.1)
Metastatic (stage IV)	56 (86.2)	40 (88.9)
Metastatic site		
Liver	43 (66.2)	30 (66.7)
Peritoneum	12 (18.5)	12 (26.7)
Lung	4 (6.2)	4 (8.9)
Number of metastatic sites		
1	28 (43.1)	21 (46.7)
2	15 (23.1)	11 (24.4)
≥3	13 (20.0)	8 (17.8)

**Abbreviations:** BMI, body mass index; CA19-9, carbohydrate antigen 19-9; Nab-P/S, nab-paclitaxel plus S-1; Nab-P/G, nab-paclitaxel plus gemcitabine.

patients received second-line treatment, 13 (20.0%) received gemcitabine-based regimens and five (7.7%) received FOLFIRINOX. In the nab-P/G group, 16 (35.6%) of 45 patients received second-line treatment, seven (15.6%) received S-1-based regimens, and three (6.7%) received FOLFIRINOX.

## Efficacy

The median follow-up duration was 16.4 months (range 0.5–26.1 months) as of May 31, 2020. Responses by treatment groups are shown in Table 3. No patient in either group achieved the best response of complete response. Among all

**Table 2** Reasons for Discontinuation and Subsequent Therapy by Treatment Group

N (%)	Nab-P/S n = 65	Nab-P/G n = 45
Disease progression	36 (55.4)	24 (53.3)
FOLFIRINOX	5 (7.7)	3 (6.7)
Nab-paclitaxel plus gemcitabine	3 (4.6)	–
Nab-paclitaxel plus S-1	–	2 (4.4)
Gemcitabine plus oxaliplatin	6 (9.2)	0
S1 plus oxaliplatin	0	2 (4.4)
Gemcitabine plus cisplatin	1 <sup>a</sup> (5.0)	0
Irinotecan plus S1	0	2 (4.4)
Gemcitabine	3 (4.6)	0
S1	0	1 (2.2)
Irinotecan plus trastuzumab	1 <sup>b</sup> (1.5)	0
Erlotinib	1 (1.5)	0
Anlotinib	0	1 (2.2)
Radiotherapy	0	3 (6.7)
TACE	0	2 (4.4)
Supportive care	16 (24.6)	8 (17.8)
Doctor discretion <sup>c</sup>	11 (16.9)	7 (15.6)
Followed by radiotherapy	11 (16.9)	5 (11.1)
Followed by surgery	0	2 (4.4)
Patient discretion <sup>d</sup>	4 (6.2)	6 (13.3)
Other anti-tumor therapy	2 (3.1)	2 (4.4)
Supportive care	2 (3.1)	4 (8.9)
Loss to follow-up	14 (21.5)	8 (17.8)

**Notes:** <sup>a</sup>A patient with germline BRCA mutation. <sup>b</sup>A patient with HER2 gene amplification. <sup>c</sup>When patients achieved PR or SD. <sup>d</sup>Without evidence of progressive disease.

**Abbreviations:** Nab-P/S, nab-paclitaxel plus S-1; Nab-P/G, nab-paclitaxel plus gemcitabine; TACE, transarterial chemoembolization.

patients, the ORR was 38.5% with nab-P/S and 28.9% with nab-P/G ( $P = 0.299$ ). DCR was similar for both groups (73.8% vs 66.7%,  $P = 0.415$ ). Among evaluated patients (nab-P/S n = 56, nab-P/G n = 37), nab-P/S still yielded a numerically higher ORR than nab-P/G (44.6% vs 35.1%,  $P = 0.361$ ). Similarly, the ORR of the primary lesions with nab-P/S was slightly higher than that with nab-P/G (overall patients 30.8% vs 22.2%,  $P = 0.322$ ; evaluated patients 39.2% vs 32.3%,  $P = 0.526$ , respectively).

Among patients with elevated CA19-9 at baseline (nab-P/S n = 54, nab-P/G n = 40), 32 (59.3%) with nab-P/S-1 and 23 (57.5%) with nab-P/G had a ≥50% decline of CA19-9 ( $P = 0.864$ ).

## Survival

The median PFS was 5.5 months in the nab-P/S group and 5.7 months in the nab-P/G ( $P = 0.34$ ), with a 6-month PFS

**Table 3** Response by Treatment Groups

	Nab-P/S n = 65	Nab-P/G n = 45	P value
<b>Target Lesions per RECIST</b>			
Best response, n (%)			
CR	0	0	
PR	25 (38.5)	13 (28.9)	
SD	23 (35.4)	17 (37.8)	
PD	8 (12.3)	7 (15.6)	
NE	9 <sup>a</sup> (13.8)	8 <sup>b</sup> (17.8)	
ORR			
Overall patients	38.5% (25/65)	28.9% (13/45)	0.299
Evaluated patients	44.6% (25/56)	35.1% (13/37)	0.361
DCR			
Overall patients	73.8% (48/65)	66.7% (30/45)	0.415
Evaluated patients	85.7% (48/56)	81.1% (30/37)	0.552
<b>Primary Lesion</b>			
Best response, n (%)			
CR	0	0	
PR	20 (30.8)	10 (22.2)	
SD	28 (43.1)	19 (42.2)	
PD	3 (4.6)	2 (4.4)	
NE	14 <sup>c</sup> (21.5)	14 <sup>d</sup> (31.1)	
ORR			
Overall patients	30.8% (20/65)	22.2% (10/45)	0.322
Evaluated patients	39.2% (20/51)	32.3% (10/31)	0.526

**Notes:** <sup>a</sup>Patients were inevaluable for target lesions per RECIST: loss to follow-up n = 9. <sup>b</sup>Patients were inevaluable for target lesions per RECIST: loss to follow-up n = 8. <sup>c</sup>Patients were inevaluable for primary target lesion: loss to follow-up n = 9, without primary lesions after surgery n = 3, lack of specific data of the longest diameter of the primary lesion n = 2. <sup>d</sup>Patients were inevaluable for primary target lesion: loss to follow-up n = 8, without primary lesions after surgery n = 1, lack of specific data of the longest diameter of the primary lesion n = 5.

**Abbreviations:** CR, complete response; DCR, disease control rate; Nab-P/S, nab-paclitaxel plus S-1; Nab-P/G, nab-paclitaxel plus gemcitabine; NE, inevaluable; ORR, objective response rate; PD, progressive disease; PR, partial response; SD, stable disease.

rate of 43.2% versus 39.8%, respectively (Figure 3A). The median OS was 10.2 months with nab-P/S as compared with 11.3 months with nab-P/G ( $P = 0.74$ ) (Figure 3B). Subgroup analyses of overall survival according to stratification factors showed no significant interaction between nab-P/S and nab-P/G in any subgroup (Figure 4).

## Univariate and Multivariate Analysis

In the univariate analysis of prognostic factors for OS, liver metastasis ( $P < 0.0001$ ), best response ( $P = 0.039$ ), decline of CA19-9 ( $P = 0.038$ ), and radiotherapy ( $P < 0.0001$ ) were significantly associated with OS. Multivariate analysis revealed that no radiotherapy (HR = 8.447, 95% CI, 2.514–28.384,  $P = 0.001$ ) brought a higher risk for death, whereas

tumors located on the body or tail of the pancreas (HR = 0.487, 95% CI 0.256–0.928,  $P = 0.029$ ) was an independent risk factor of good OS (Table 4).

In the univariate analysis of prognostic factors for PFS, liver metastasis ( $P = 0.006$ ), number of metastatic sites ( $P = 0.031$ ), best response ( $P < 0.0001$ ), and decline of CA19-9 ( $P = 0.021$ ) were significantly associated with PFS. However, none of them was the independent prognostic factor for PFS.

## Safety

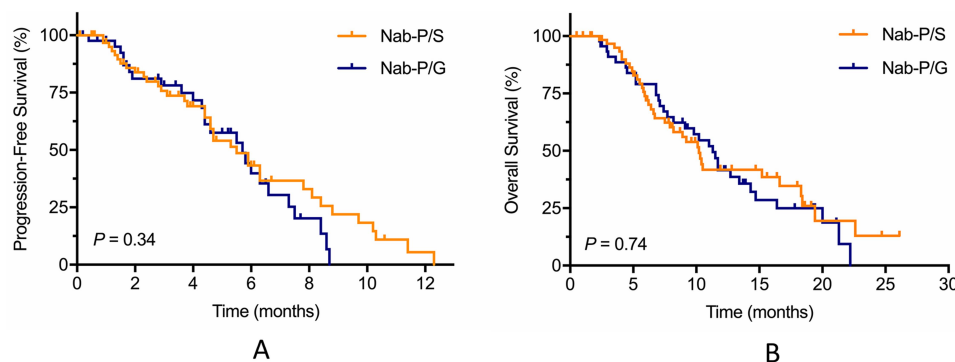
Adverse events (AE) between the two groups are listed in Table 5. No treatment-related death occurred. Patients in the nab-P/S group had numerically higher incidences of all-grade AEs, including hematologic and nonhematologic toxicities. The most frequent AEs in the nab-P/S group were fatigue (78.5%), neutropenia/leukopenia (56.9%), and anemia (50.8%). The most frequent AEs in the nab-P/G group were fatigue (88.9%), neutropenia/leukopenia (66.7%), and nausea/vomiting (64.4%).

The incidences of grade 3 or 4 neutropenia/leukopenia, febrile neutropenia, and thrombocytopenia were numerically lower in the nab-P/S group than in the nab-P/G group. One patient with grade 3 anemia in the nab-P/S group was evaluated as grade 2 anemia at baseline. However, nab-P/S had a trend toward a higher risk of grade 3 or 4 diarrhea.

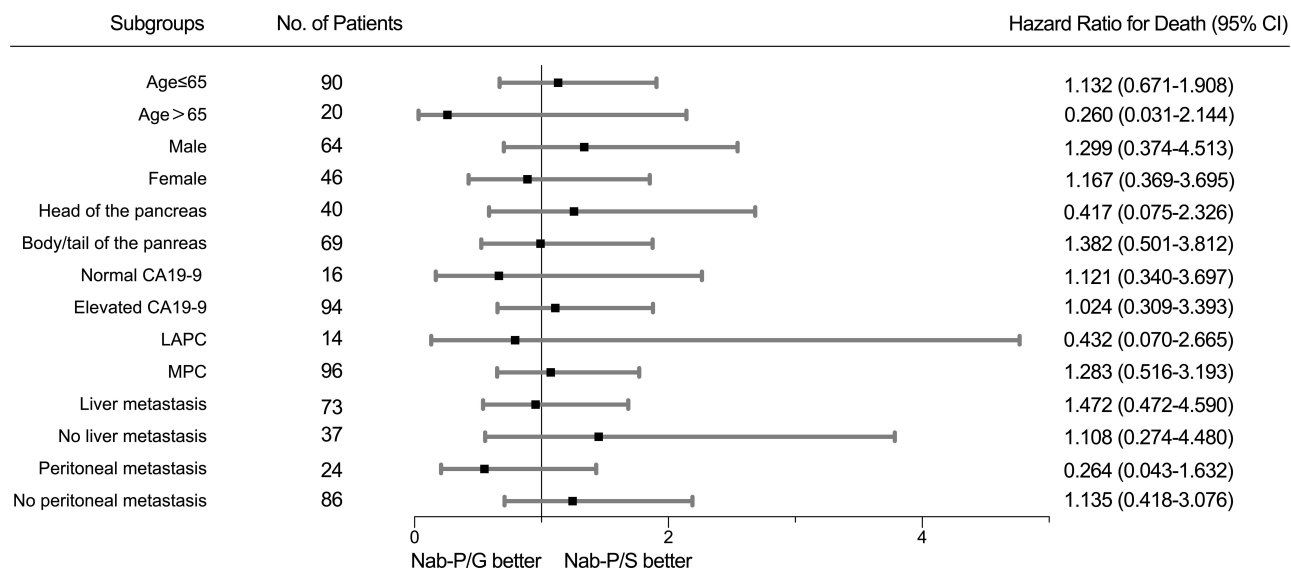
## Discussion

This is a single-center retrospective study to compare nab-P/S with nab-P/G as first-line chemotherapy in patients with advanced PDAC. The ORR, DCR, and ORR of primary lesion with nab-P/S were slightly higher than those with nab-P/G, respectively. OS and PFS were similar between the two groups. Nab-P/S could be a comparable and convenient alternative with a more favorable safety profile. We have reported similar results with smaller sample size before.<sup>16</sup>

By reviewing landmark phase III trials establishing first-line chemotherapy for PDAC, gemcitabine has been the standard of care since the 1990s.<sup>3</sup> It was shown to be superior to 5-FU with a modest survival advantage (5.65 vs 4.41 months,  $P = 0.0025$ ) and clinical benefit responses such as pain relief (23.8% vs 4.8%,  $P = 0.0022$ ). Unfortunately, several combinations of gemcitabine with cytotoxic or target agents failed to show improvements in survival. Moore et al demonstrated the combination of gemcitabine plus erlotinib, an EGFR inhibitor, prolonged median survival by only 10 days versus



**Figure 3** Kaplan–Meier estimates for (A) progression-free survival and (B) overall survival.



**Figure 4** The forest plot for overall survival.

gemcitabine alone (6.24 vs 5.91 months,  $P = 0.038$ ).<sup>4</sup> In 2011, the results of the phase III PRODIGE 4/ACCORD 11 trial brought a significant breakthrough in patients with good performance. FOLFIRINOX resulted in an 11.1-month median survival compared with 6.8 months with gemcitabine alone ( $P < 0.001$ ). The ORR was also significantly higher with FOLFIRINOX than with gemcitabine (31.6% vs 9.4%,  $P < 0.001$ ).<sup>5</sup> Von Hoff et al showed an improved response rate of 23% with the combination of nab-paclitaxel plus gemcitabine versus 7% with gemcitabine alone ( $P < 0.001$ ) in the phase III MPACT trial.<sup>6</sup> Both median OS and PFS were significantly prolonged with nab-P/G versus gemcitabine (median OS, 8.7 vs 6.6 months,  $P < 0.001$ ; median PFS, 5.5 vs 3.7 months,  $P < 0.001$ ). Nab-paclitaxel, as the only drug achieving success among all gemcitabine-based regimens, was considered to deplete collagen and dilate blood vessels, which enabled the

delivery of gemcitabine to tumors.<sup>17</sup> However, FOLFIRINOX, as well as nab-P/G, correlated with increased toxicity compared with gemcitabine, such as grade 3 or 4 myelosuppression and peripheral neuropathy.<sup>5,6</sup>

S-1 (an oral drug containing tegafur, gimeracil, and oteracil potassium) has shown promising activity and convenience of administration as first-line therapy in the previous trials for metastatic PDAC in Japan.<sup>7,8</sup> In the phase III GEST study, gemcitabine plus S-1 (GS) did not show superiority to gemcitabine in patients with locally advanced and metastatic pancreatic cancer in Japan and Taiwan.<sup>9</sup> However, S-1 demonstrated non-inferiority to gemcitabine in terms of OS ( $P < 0.001$  for non-inferiority). The ORR was 21.0% with S-1 and 13.3% with gemcitabine ( $P = 0.02$ ). The superiority of S-1 to gemcitabine ( $P < 0.0001$  for superiority) as adjuvant

**Table 4** Univariate and Multivariate Analysis of Overall Survival

Variables	N	Univariate Analysis		Multivariate Analysis	
		Median OS, m (95% CI)	P value <sup>b</sup>	Hazard Ratio (95% CI)	P value <sup>c</sup>
Treatment group					
Nab-P/S	65	10.2 (8.5–12.0)	<b>0.721</b>		0.552
Nab-P/G	45	11.3 (9.5–13.1)			
Age, years					
≤65	90	10.3 (8.9–11.7)	0.521		
>65	20	18.3 (3.8–32.8)			
Gender					
Male	64	10.2 (8.8–11.6)	0.426		
Female	46	11.5 (9.7–13.3)			
BMI, kg/m <sup>2</sup>					
<18.5	7				
18.5–23.9	43				
≥24	17				
Tumor site of pancreas					
Head	40	9.1 (7.1–11.1)	<b>0.054</b>	1 0.487 (0.256–0.928)	<b>0.029</b>
Body/Tail	69	12.7 (9.2–16.2)			
Disease status					
Locally advanced	14	-	<b>0.052</b>		0.306
Metastatic	96	10.3 (8.2–12.4)			
Baseline CA19-9, U/mL					
Normal (0–37)	16	11.5 (5.5–17.5)	0.914		
Elevated (>37)	94	10.2 (8.2–12.2)			
Liver metastasis					
Yes	73	8.9 (6.2–11.6)	<b>&lt; 0.0001</b>		0.127
No	37	21.3 (5.9–36.7)			
No. of metastatic sites					
1	49	10.1 (6.0–14.2)	0.856		
≥2	47	10.4 (8.3–12.5)			
Best response					
CR+PR	38	13.4 (9.3–14.2)	<b>0.039</b>		0.528
SD+PD	55	8.9 (7.3–10.5)			
Decline of CA19-9 <sup>a</sup>					
≥50%	55	11.7 (8.9–14.5)	<b>0.038</b>		0.320
<50%	27	6.8 (2.6–11.0)			
Grade 3–4 leukopenia/neutropenia					
Yes	25	11.7 (10.0–13.4)	0.302		
No	80	10.2 (7.8–12.6)			
Radiotherapy					
Yes	16	-	<b>&lt; 0.0001</b>	1 8.447 (2.514–28.384)	<b>0.001</b>
No	94	9.8 (7.6–12.0)			

**Notes:** <sup>a</sup>Among patients with elevated CA19-9 at baseline. <sup>b</sup>Variables with bolded P values were included in the Cox proportional hazards regression model. <sup>c</sup>Bolded P values are significant.

**Abbreviations:** CA19-9, carbohydrate antigen 19-9; CI, confidence interval; CR, complete response; Nab-P/S, nab-paclitaxel plus S-1; Nab-P/G, nab-paclitaxel plus gemcitabine; PD, progressive disease; PR, partial response; SD, stable disease.

**Table 5** Adverse Events

Events, n (%)	All Grades		Grade 3/4		P value (Grade 3/4)
	Nab-P/S n = 65	Nab-P/G n = 45	Nab-P/S n = 65	Nab-P/G n = 45	
<b>Hematologic</b>					
Neutropenia/Leukopenia	37 (56.9)	30 (66.7)	15 (23.1)	11 (24.4)	0.868
Febrile neutropenia	1 (1.5)	3 (6.7)	1 (1.5)	3 (6.7)	0.303
Thrombocytopenia	9 (13.8)	11 (24.4)	0	3 (6.7)	0.066
Anemia	33 (50.8)	28 (62.2)	2 (3.1)	1 (2.2)	1
<b>Nonhematologic</b>					
Elevated AST/ALT	15 (23.1)	17 (37.8)	0	2 (4.4)	0.165
Fatigue	51 (78.5)	40 (88.9)	1 (1.5)	3 (6.7)	0.303
Peripheral neuropathy	29 (44.6)	24 (53.3)	0	2 (4.4)	0.165
Hand-foot syndrome	7 (10.8)	5 (11.1)	0	0	-
Diarrhea	10 (15.4)	9 (20.0)	3 (4.6)	0	0.268
Rash	15 (23.1)	19 (42.2)	0	2 (4.4)	0.165
Nausea/Vomiting	26 (40.0)	29 (64.4)	0	1 (2.2)	0.409

**Abbreviations:** AST, aspartate aminotransferase; ALT, alanine aminotransferase; Nab-P/S, nab-paclitaxel plus S-1; Nab-P/G, nab-paclitaxel plus gemcitabine.

chemotherapy was reported for Japanese patients with resected pancreatic cancer in the phase III JASPAC 01 study.<sup>10</sup> As a useful oral alternative, S-1 developed a lower incidence of grade 3 or worse hematologic adverse events and elevated AST/ALT levels when compared with gemcitabine, but a higher risk of diarrhea.<sup>9,10</sup>

Based on the results of phase III trials above, efforts have been made to develop a new combination of nab-paclitaxel and S-1 recently. Two single-arm phase II trials in China reported by Shi et al and Zhang et al showed promising survival (median OS, 9.4–13.6 months) and high ORR (50.0–53.1%) with first-line nab-P/S in patients with advanced PDAC.<sup>13,14</sup> The remarkable results of ORR also indicated the possible role of nab-P/S in the neoadjuvant setting for LAPC. The triweekly regimen of nab-P/S was used in these two trials. Patients in the nab-P/S group were treated with nab-paclitaxel at a dose of 120 mg/m<sup>2</sup> IV on days 1 and 8 plus S-1 orally twice daily at a dose according to BSA (80 mg/d for BSA < 1.25 m<sup>2</sup>, 100 mg/d for BSA between 1.25 m<sup>2</sup> and 1.5 m<sup>2</sup>, 120 mg/d for BSA ≥ 1.5 m<sup>2</sup>) on days 1–14 every 3 weeks. Nab-P/S was observed with a favorable safety profile.

In the present study, we reported a real-world experience of a single center for nab-P/S or nab-P/G as first-line therapy in advanced PDAC. In our series, the ORR with nab-P/S was seemingly better than nab-P/G but did not reach 50.0% (nab-P/S vs nab-P/G, 38.5% vs 28.9%, *P* = 0.30). On the one hand, these results were based on the retrospective data with inherent bias. On the other hand,

we used the biweekly regimen of nab-P/S in our institution. The dose intensity decreased by 30.6% for nab-paclitaxel and 33.3% for S-1 in our biweekly regimen compared with the triweekly regimen. However, it also indicated that dosage reduction did not weaken the anti-tumor activity. The survival time with nab-P/S (10.2 months) was similar to those in the previous phase II studies, and the adverse events were controllable.

Nab-paclitaxel in combination with fluoropyrimidine showed good clinical outcomes. A recent non-comparative, randomized phase II trial in France assessed the activity and safety of a new regimen of nab-paclitaxel plus simplified leucovorin and 5-FU, as well as a standard treatment regimen of nab-P/G. At 4 months, 56% (40/72) of patients in the leucovorin and 5-FU group were free from disease progression, while 54% (21/39) in the nab-P/G group.<sup>18</sup> Favorable median PFS (5.9 vs 4.9 months), median OS (11.4 vs 9.2 months), and safety profiles were reported in the leucovorin and 5-FU group. Nab-paclitaxel plus capecitabine resulted in a good ORR of 41.4% with good tolerance in a phase II trial.<sup>19</sup>

There are no standard second-line treatments. From our experience, we commonly use fluoropyrimidine-based regimens combined with irinotecan or oxaliplatin (FOLIRINOX, FOLFIRI, and FOLFOX) or gemcitabine-based regimens combined with platinum drugs. Further investigation on the optimal regimens after the failure of nab-P/S is warranted. After nab-P/G failure, fluoropyrimidine-based regimens were also suggested by Pointet et al



as second-line therapy, which has a manageable toxicity profile and promising clinical outcomes.<sup>20</sup> A platinum-based regimen was observed with a clear trend for longer survival time than irinotecan or nal-IRI-based regimen after nab-P/G.<sup>21</sup> Clinical trials are always preferred for all patients with disease progression.

There were limitations to the present study. First, this was a retrospective study with its inherent bias. We conducted a phase II, randomized study at nearly the same time, and the preliminary analysis was presented at the 2019 Gastrointestinal Cancers Symposium.<sup>22</sup> Second, we only enrolled patients from a single center, and the sample size was small. Third, the dose of the triweekly regimen of gemcitabine plus nab-paclitaxel was modified for Chinese patients. A phase I/II study recommended nab-paclitaxel (120 mg/m<sup>2</sup>) followed by gemcitabine (1000 mg/m<sup>2</sup>) administered on days 1 and 8 every 3 weeks for Chinese patients with untreated PDAC. The ORR was 41.67%, and the median PFS and OS were 5.23 months and 12.17 months, respectively.<sup>15</sup> In the Chinese Society of Clinical Oncology Diagnosis and Treatment Guidelines for Chinese Patients with Pancreatic Cancer, the MPACT regimen of nab-P/G was recommended and can be adjusted into a triweekly regimen (nab-paclitaxel 125 mg/m<sup>2</sup> plus gemcitabine 1000 mg/m<sup>2</sup> on days 1 and 8 every 3 weeks) when necessary. Fourth, S-1 is widely used in Asian countries. The pharmacokinetics and pharmacodynamics of S-1 might be different between Western and East Asian patients.<sup>23</sup> The optimal dosage and role of S-1 should be re-assessed in non-Asian patients.

## Conclusion

Nab-paclitaxel plus S-1 could be a comparable and convenient alternative with a favorable safety profile as first-line chemotherapy for advanced PDAC, as well as an option for neoadjuvant treatment.

## Acknowledgments

We are particularly grateful to all the people who have given us help on our article. This paper was presented at 2019 ASCO as an abstract presentation with interim findings (doi: 10.1200/JCO.2019.37.15\_suppl.e15743).

## Funding

There is no funding to report.

## Disclosure

The authors declare that they have no conflicts of interest for this work.

## References

- Kamisawa T, Wood LD, Itoi T, et al. Pancreatic cancer. *Lancet*. 2016;388(10039):73–85. doi:10.1016/S0140-6736(16)00141-0
- Chen W, Zheng R, Baade PD, et al. Cancer statistics in China, 2015. *CA Cancer J Clin*. 2016;66:115–132. doi:10.3322/caac.21338
- Burris HA 3rd, Moore MJ, Andersen J, et al. Improvements in survival and clinical benefit with gemcitabine as first-line therapy for patients with advanced pancreas cancer: a randomized trial. *J Clin Oncol*. 1997;15(6):2403–2413. doi:10.1200/JCO.1997.15.6.2403
- Moore MJ, Goldstein D, Hamm J, et al. Erlotinib plus gemcitabine compared with gemcitabine alone in patients with advanced pancreatic cancer: a phase III trial of the National Cancer Institute of Canada Clinical Trials Group. *J Clin Oncol*. 2007;25(15):1960–1966. doi:10.1200/JCO.2006.07.9525
- Conroy T, Desseigne F, Ychou M, et al. FOLFIRINOX versus gemcitabine for metastatic pancreatic cancer. *N Engl J Med*. 2011;364(19):1817–1825. doi:10.1056/NEJMoa1011923
- Von Hoff DD, Ervin T, Arena FP, et al. Increased survival in pancreatic cancer with nab-paclitaxel plus gemcitabine. *N Engl J Med*. 2013;369(18):1691–1703. doi:10.1056/NEJMoa1304369
- Ueno H, Okusaka T, Ikeda M, et al. An early phase II study of S-1 in patients with metastatic pancreatic cancer. *Oncology*. 2005;68(2–3):171–178. doi:10.1159/000086771
- Okusaka T, Funakoshi A, Furuse J, et al. A late phase II study of S-1 for metastatic pancreatic cancer. *Cancer Chemother Pharmacol*. 2008;61(4):615–621. doi:10.1007/s00280-007-0514-8
- Ueno H, Ioka T, Ikeda M, et al. Randomized phase III study of gemcitabine plus S-1, S-1 alone, or gemcitabine alone in patients with locally advanced and metastatic pancreatic cancer in Japan and Taiwan: GEST study. *J Clin Oncol*. 2013;31(13):1640–1648. doi:10.1200/JCO.2012.43.3680
- Uesaka K, Boku N, Fukutomi A, et al. Adjuvant chemotherapy of S-1 versus gemcitabine for resected pancreatic cancer: a Phase 3, open-label, randomised, non-inferiority trial (JASPAC 01). *Lancet*. 2016;388(10041):248–257. doi:10.1016/S0140-6736(16)30583-9
- Suenaga M, Yamada S, Fujii T, et al. S-1 plus nab-paclitaxel is a promising regimen for pancreatic cancer in a preclinical model. *J Surg Oncol*. 2016;113(4):413–419. doi:10.1002/jso.24147
- Li JA, Xu XF, Han X, et al. Nab-paclitaxel plus S-1 shows increased antitumor activity in patient-derived pancreatic cancer xenograft mouse models. *Pancreas*. 2016;45(3):425–433. doi:10.1097/MPA.0000000000000501
- Shi Y, Zhang S, Han Q, et al. Nab-paclitaxel plus S-1 in advanced pancreatic adenocarcinoma (NPSPAC): a single arm, single center, phase II trial. *Oncotarget*. 2017;8(54):92401–92410. doi:10.18632/oncotarget.21359
- Zhang W, Du C, Sun Y, et al. Nab-paclitaxel plus S-1 as first-line followed by S-1 maintenance for advanced pancreatic adenocarcinoma: a single-arm phase II trial. *Cancer Chemother Pharmacol*. 2018;82(4):655–660. doi:10.1007/s00280-018-3650-4
- Zhang DS, Wang DS, Wang ZQ, et al. Phase I/II study of albumin-bound nab-paclitaxel plus gemcitabine administered to Chinese patients with advanced pancreatic cancer. *Cancer Chemother Pharmacol*. 2013;71(4):1065–1072. doi:10.1007/s00280-013-2102-4
- Zong Y, Peng Z, Ming L, et al. Nab-paclitaxel/S-1(AS) versus nab-paclitaxel/gemcitabine (AG) for first-line chemotherapy in advanced pancreatic ductal adenocarcinoma (aPDAC): a retrospective analysis of efficacy and safety. *J Clin Oncol*. 2019;37(15\_suppl). doi:10.1200/JCO.2019.37.15\_suppl.e15743

17. Von Hoff DD, Ramanathan RK, Borad MJ, et al. Gemcitabine plus nab-paclitaxel is an active regimen in patients with advanced pancreatic cancer: a phase I/II trial. *J Clin Oncol*. 2011;29(34):4548–4554. doi:10.1200/JCO.2011.36.5742
18. Bachet JB, Hammel P, Desramé J, et al. Nab-paclitaxel plus either gemcitabine or simplified leucovorin and fluorouracil as first-line therapy for metastatic pancreatic adenocarcinoma (AFUGEM GERCOR): a non-comparative, multicentre, open-label, randomised Phase 2 trial. *Lancet Gastroenterol Hepatol*. 2017;2(5):337–346. doi:10.1016/S2468-1253(17)30046-8
19. Scheithauer W, Kornek G, Prager G, et al. Phase II trial of capecitabine plus nab-paclitaxel in patients with metastatic pancreatic adenocarcinoma. *J Gastrointest Oncol*. 2016;7(2):234–238. doi:10.3978/j.issn.2078-6891.2015.107
20. Pointet AL, Tougeron D, Pernot S, et al. Three fluoropyrimidine-based regimens in routine clinical practice after nab-paclitaxel plus gemcitabine for metastatic pancreatic cancer: an AGEO multicenter study. *Clin Res Hepatol Gastroenterol*. 2020;44(3):295–301. doi:10.1016/j.clinre.2019.08.009
21. Merz V, Cavaliere A, Messina C, et al. Multicenter retrospective analysis of second-line therapy after gemcitabine plus nab-paclitaxel in advanced pancreatic cancer patients. *Cancers (Basel)*. 2020;12(5):1131. doi:10.3390/cancers12051131
22. Zong Y, Peng Z, Wang X, et al. Efficacy and safety of nab-paclitaxel plus S-1(nab-P/S-1) versus nab-paclitaxel plus gemcitabine (nab-P/Gem) for first-line chemotherapy in advanced pancreatic ductal adenocarcinoma (aPDAC): a randomized study. *J Clin Oncol*. 2020;38(4\_suppl):717. doi:10.1200/JCO.2020.38.4\_suppl.717
23. Chuah B, Goh BC, Lee SC, et al. Comparison of the pharmacokinetics and pharmacodynamics of S-1 between Caucasian and East Asian patients. *Cancer Sci*. 2011;102(2):478–483. doi:10.1111/j.1349-7006.2010.01793.x

## Cancer Management and Research

Dovepress

### Publish your work in this journal

Cancer Management and Research is an international, peer-reviewed open access journal focusing on cancer research and the optimal use of preventative and integrated treatment interventions to achieve improved outcomes, enhanced survival and quality of life for the cancer patient.

The manuscript management system is completely online and includes a very quick and fair peer-review system, which is all easy to use. Visit <http://www.dovepress.com/testimonials.php> to read real quotes from published authors.

Submit your manuscript here: <https://www.dovepress.com/cancer-management-and-research-journal>