

High LARGE1 Expression May Predict Benefit from Adjuvant Chemotherapy in Resected Non-Small-Cell Lung Cancer

This article was published in the following Dove Press journal:
Pharmacogenomics and Personalized Medicine

Yu Liu¹
Shirui Huang²
Mengjiao Kuang²
Huiyan Wang²
Qipeng Xie²

¹Department of Cardiothoracic Surgery, The First Affiliated Hospital of Wenzhou Medical University, Wenzhou, Zhejiang 325035, People's Republic of China;

²Department of Laboratory Medicine, The Second Affiliated Hospital and Yuying Children's Hospital of Wenzhou Medical University, Wenzhou, Zhejiang 325027, People's Republic of China

Background: LARGE1 plays a pivotal role in glycosylation of alpha-Dystroglycan (α -DG) and is aberrantly downregulated in cell lines originating from epithelium-derived cancers including lung cancer. However, the expression of LARGE1 and its clinical significance in NSCLC are not clear.

Materials and Methods: The data were collected from the TCGA database to investigate LARGE1 expression in stage I–III NSCLC and explore its associations with clinicopathological parameters and overall survival of patients. The prognostic role of LARGE1 was examined in subgroups according to clinical features and treatments. The results were validated in external cohorts from the NCBI GEO database. Gene Set Enrichment Analysis (GSEA) was performed to investigate the potential molecular mechanisms during LARGE1 alteration in NSCLC.

Results: LARGE1 was aberrantly downregulated in NSCLC compared with adjacent tissues and normal lung tissues and in tumors with advanced stage compared with early stage. There was only a trend of association between high LARGE1 with OS in multivariate analysis. Surprisingly, high LARGE1 was significantly associated with improved OS in a subgroup of the patients with adjuvant chemotherapy (ACT) and a significant interaction between LARGE1 expression and ACT was found. Improved OS after ACT was also found in patients with high LARGE1 compared to those with low LARGE1. When combining LARGE1 expression and ACT, compared with patients with non-ACT, HR of low LARGE1/ACT was 0.592 (95% CI=0.432–0.813, $P=0.0012$), and HR of high LARGE1/ACT was 0.124 (95% CI=0.031–0.505, $P=0.0036$). The results were verified in two external cohorts from the GEO database. GSEA indicated that LARGE1 might downregulate cell cycle pathway to improve ACT sensitivity and subsequently the prognosis in NSCLC.

Conclusion: High LARGE1 can be used to identify the patients with resected stage I–III NSCLC most likely to benefit from adjuvant chemotherapy.

Keywords: NSCLC, LARGE1, mRNA, overall survival, adjuvant chemotherapy, benefit

Introduction

Lung cancer is one of the most common malignant tumors and the leading cause of cancer-related deaths worldwide.¹ In 2020, it is expected that there will be 228,820 cases of lung cancer and 135,720 related deaths in the United States.¹ There are two main histological types of lung cancer: small cell lung cancer and non-small cell lung cancer (NSCLC).² NSCLC accounts for approximately 85% of lung cancer cases and can further be divided into lung adenocarcinoma (LUAD) and lung

Correspondence: Qipeng Xie
Department of Laboratory Medicine, The Second Affiliated Hospital and Yuying Children's Hospital of Wenzhou Medical University, Wenzhou, Zhejiang 325027, People's Republic of China
Tel +86-15157787159
Email pandon2002@163.com

squamous cell carcinoma (LUSC).² The 5-year survival rate of all patients with lung cancer is only about 19%.^{1,3}

Surgical resection is the main and most effective choice for NSCLC patients, but only 20% of patients are suitable for surgery due to late diagnosis⁴ and postoperative tumor recurrence is the major cause of treatment failure.^{5–7} Platinum-based adjuvant chemotherapy is one of the main means to improve the overall survival (OS) of patients with NSCLC after surgical resection, especially for patients with advanced tumors⁸ after several previous randomized clinical trials demonstrated ACT is associated with statistically significant survival advantages in patients with completely resected NSCLC.^{9–13} However, a meta-analysis of these studies suggested that ACT only provides an absolute benefit of 5.4% in 5-year OS¹⁴ due to primary and acquired drug resistance.¹⁵ And the remaining 85%–95% of patients do not get benefit from ACT but suffer the ACT toxicity. Thus, it is critical to identify NSCLC patients who will not benefit from ACT.

LARGE1, encoding a bifunctional glycosyltransferase, participates in glycosylation of α -DG by synthesizing and transferring the laminin-binding repeating units of 3GlcA-1-3Xyl-1 onto α -DG.¹⁶ *LARGE1* downregulation has been found to underlie abnormal glycosylation of α -DG in epithelium-derived cancer cells lines derived from breast, cervical, and lung cancers and exogenous expression of *LARGE1* restores normal glycosylation and laminin binding of α -DG, leading to enhanced cell adhesion and reduced cell migration in vitro.¹⁷ Exogenous expression of *LARGE1* has also been found to restore α -DG matrix glycan and laminin binding in rhabdomyosarcoma.¹⁸

Currently, the clinical significance of *LARGE1* in lung cancer is not clear. In the present study, we utilized the large dataset of NSCLC patients from TCGA database to investigate the expression of *LARGE1* and its clinical significance and further validated the results in external cohorts. In addition, we preliminarily explored the potential molecular mechanisms related to *LARGE1* in NSCLC carcinogenesis.

Materials and Methods

Expression of *LARGE1* mRNA

Expression in NSCLC

TCGA TARGET GTEx dataset, which contains gene expression data in tumor tissues, adjacent tissues, and normal lung tissues, was downloaded from Xenabrowser.net¹⁹ and used to investigate *LARGE1* mRNA expression

in NSCLC tumor tissues, adjacent tissues, and normal lung tissues.

Kaplan–Meier Plotter

Kaplan–Meier plotter (KM plotter),²⁰ a web-based tool, is capable of assessing the effect of 54k genes (mRNA, miRNA, protein) on survival in 21 cancer types with the data from the databases including GEO, EGA, and TCGA. This tool consisted of 2,437 lung cancer cases with gene profile (mRNA) data determined by microarray. Of the 2,437 lung cases, 1,927 cases had OS information. We used the tool to initially analyze the association of *LARGE1* expression with OS in lung cancer with Auto select best cutoff value and the JetSet best probe set (215543_s_at) for *LARGE1*.

Analysis of NSCLC Data from TCGA

To further investigate the associations of *LARGE1* mRNA levels with clinicopathological features and OS in NSCLC, RNA-Seq data and corresponding clinical data of the NSCLC patients were downloaded from TCGA database by Xenabrowser.net.¹⁹ The correlations between *LARGE1* expression and baseline clinical characteristics in NSCLC patients were examined by the Chi-square test or Fisher's exact test as appropriate. Kaplan–Meier plot curves were used to explore the association of *LARGE1* expression (optimal cutoff value) with OS in overall NSCLC patients. Univariate/multivariate Cox proportional hazards regression models were also used to explore the effects of *LARGE1* mRNA levels on OS in overall and subgroups stratified by age, gender, smoking history, tumor stage, margin status, and adjuvant chemotherapy (ACT) treatment. Furthermore, *LARGE1* expression and ACT were also combined to classify NSCLC patients to observe their OS difference in Kaplan–Meier curves and Cox proportional hazards regression models.

Validation

To validate the results from the TCGA cohort, external cohort studies were searched in NCBI GEO database. The datasets in which: 1) the subjects were resected NSCLC patients; 2) the patients were treated with adjuvant chemotherapy and without chemotherapy; and 3) contained follow-up information (OS time and status) and contained *LARGE1* expression levels analyzed by microarray or high throughput sequencing were downloaded. Only TNM stage I–III patients were enrolled. The datasets GSE42127,²¹

GSE14814,²² and GSE68465²³ were included (Tables S1 and S2).

Gene Set Enrichment Analysis

To investigate the potential molecular mechanisms during LARGE1 alteration in lung cancer, the Spearman correlations analysis results of more than 20,000 genes with LARGE1 in lung adenocarcinoma in the TCGA database were downloaded via cBioPortal (cbioportal.org).^{24,25} The genes were ranked by the Spearman's rank r and subjected to Gene Set Enrichment Analysis (GSEA) via software, JAVA GSEA 3.0 (<http://software.broadinstitute.org/gsea/index.jsp>).^{26,27} The biologically defined gene sets "c2.cp.kegg.v7.1.symbols.gmt," "c7.all.v7.1.symbols.gmt," and "h.all.v7.1.symbols.gmt" were used as the reference databases.

Association of LARGE mRNA Expression with Cell Cycle Pathway Score

Akbani et al have used reverse phase protein array (RPPA) data from TCGA to calculate the score for 10 cancer-related pathways in 32 cancer types including cell cycle pathway.²⁸ RPPA is a high-throughput antibody-based technique with procedures similar to that of Western blots. The pathway score is then the sum of the relative protein level of all positive regulatory components minus that of negative regulatory components in a particular pathway. For the cell cycle pathway, its score is the sum of the relative protein levels of CDK1, CYCLINB1, CYCLIND1, CYCLINDE1, CYCLINE2, P27PT157, P27PT198, and PCNA. Association of LARGE1 expression with cell cycle pathway score in lung adenocarcinoma was analyzed by Spearman correlation analysis.

Statistical Analysis

Kruskal–Wallis tests were used to compare LARGE1 expression in NSCLC tumor tissues, adjacent tissues, and normal lung tissues and in patients with different stages. Fisher's exact test or Chi-square test were used to determine the associations of LARGE1 expression with clinical features of NSCLC patients. Kaplan-Meier curves and univariate Cox proportional hazards regression models as well as Kaplan-Meier curves adjusted by confounding factors and multivariate Cox proportional hazards regression models were used to clarify the effects of LARGE1 expression on OS in NSCLC patients. All statistical analyses were performed with R software (v 3.4.3). A two-sided $P < 0.05$ was considered statistically significant.

Results

LARGE1 Was Downregulated in NSCLC

TCGA TARGET GTEx dataset was used to investigate LARGE1 mRNA expression in NSCLC tumor tissues, adjacent tissues, and normal lung tissues. LARGE1 was found to be downregulated in LUAD tumor tissues (Figure 1A) and LUSC tumor tissues (Figure 1B) compared with corresponding adjacent tissues and normal lung tissues. In addition, LARGE1 expression was determined in tumors with different stages in patients with TNM I–III NSCLC. The results suggested that LARGE1 was decreasingly expressed along with advancing tumor T stage (Figure 1C and D), N stage (Figure 1E and F), and TNM stage (Figure 1G and H) in both LUAD (Figure 1C, E, and G) and LUSC (Figure 1D, F, and H), especially in LUAD.

Correlations of LARGE1 Expression with Clinicopathological Features in Stage I–III NSCLC Patients

A total of 981 NSCLC patients from the TCGA database with baseline clinical characteristics and OS outcome information were split into a high LARGE1 expression group and a low LARGE1 expression group by the median value of LARGE1 expression. As shown in Table 1, high LARGE1 was associated with advanced T stage, N stage, TNM stage, LUSC, and older age but not with gender and smoking history.

Correlations of LARGE1 Expression Levels with Overall Survival in Stage I–III NSCLC Patients

Effects of LARGE1 expression levels on OS in NSCLC was first examined using Kaplan-Meier plotter (KM plotter) and high LARGE1 expression was found to be associated with favorable OS in 1,925 NSCLC patients (Figure 2A). Then the effect of LARGE1 expression on OS was investigated in the 981 NSCLC patients from TCGA. Increased LARGE1 expression was associated with favorable OS in NSCLC revealed by both Kaplan-Meier curve with Log rank test (optimal cutoff value, $P=0.028$; Figure 2B) and univariate Cox proportional hazards regression model (HR=0.797; 95% CI=0.651–0.976; $P=0.029$). However, the association was not significant in the multivariate model (HR=0.806, 95% CI=0.633–1.027, $P=0.081$). Next, we used LARGE1 expression level as a continuous variable to explore its effects on OS in different subgroups stratified by age, gender, smoking

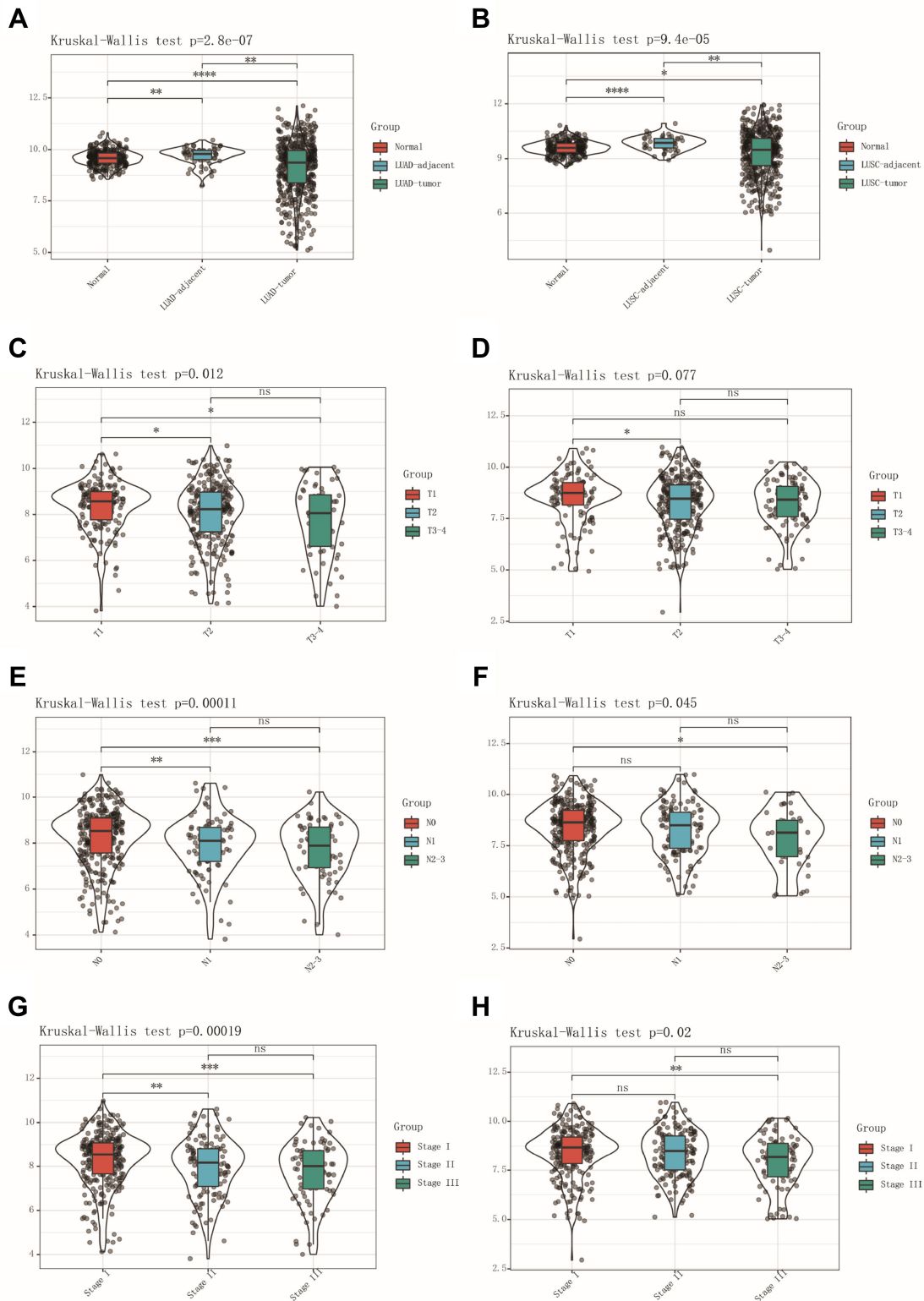


Figure 1 LARGE1 mRNA expression in NSCLC. **(A, B)** LARGE1 expression in lung adenocarcinoma (LUAD) **(A)** and lung squamous cell carcinoma (LUSC) **(B)** compared to corresponding adjacent tissues and normal lung tissues. **(C–H)** LARGE1 expression in LUAD **(C, E, and G)** and LUSC **(D, F, and H)** with different T stages **(C and D)**, N stages **(E and F)**, and TNM stages **(G and H)**.

Table 1 Correlations of LARGE1 Expression with Clinicopathological Features in Stage I–III NSCLC Patients

Clinical Features	Low LARGE1	High LARGE1	P-value
N	489	492	
Age (years)			0.002
<65	208 (43.882%)	164 (34.238%)	
≥65	266 (56.118%)	315 (65.762%)	
Gender			0.937
Female	197 (40.286%)	197 (40.041%)	
Male	292 (59.714%)	295 (59.959%)	
Smoking history			0.065
Lifelong non-smoker	43 (8.996%)	43 (8.977%)	
Current smoker	123 (25.732%)	121 (25.261%)	
Current reformed smoker for < or = 15 years	217 (45.397%)	188 (39.248%)	
Current reformed smoker for > 15 years	89 (18.619%)	124 (25.887%)	
Current reformed smoker, duration not specified	6 (1.255%)	3 (0.626%)	
Histology			0.038
Lung adenocarcinoma	259 (52.965%)	228 (46.341%)	
Lung squamous cell carcinoma	230 (47.035%)	264 (53.659%)	
Pathological TNM stages			<0.001
I	230 (47.035%)	293 (59.553%)	
II	155 (31.697%)	134 (27.236%)	
III	104 (21.268%)	65 (13.211%)	
Pathological T stages			<0.001
T1	112 (22.904%)	167 (33.943%)	
T2	295 (60.327%)	256 (52.033%)	
T3–4	82 (16.769%)	69 (14.024%)	
Pathological N stages			<0.001
N0	288 (59.627%)	347 (71.399%)	
N1	118 (24.431%)	100 (20.576%)	
N2	77 (15.942%)	39 (8.025%)	

history, histology, TNM stage, margin, adjuvant chemotherapy, and adjuvant radiotherapy. Association of increasing LARGE1 expression with OS was observed in the subgroup of patients receiving adjuvant chemotherapy but not in other subgroups (Figure 2C). After splitting LARGE1 expression into high and low groups, similar results were obtained by Kaplan-Meier curves and Cox regression analyses (Figure 3A–C; Table 2). And ACT was found to provide more benefit in the high LARGE1 group compared to the low LARGE1 group (Figure 3D and E, and Table 2). We also found a significant interaction between LARGE1 expression and adjuvant chemotherapy when evaluating their effects on OS (Table 2). Furthermore, we classified the patients by combining LARGE1 expression and adjuvant chemotherapy into three groups, ie, non-ACT, low LARGE1/ACT, and high LARGE1/ACT. Compared with patients with non-ACT, HR

of low LARGE1/ACT was 0.592 (95% CI=0.432–0.813, $P=0.0012$), and HR of high LARGE1/ACT was 0.124 (95% CI=0.031–0.505, $P=0.0036$) (Figure 4A and B, and Table 2).

Validation

The above results suggested high LARGE1 expression might help to identify the patients who would get more benefit from adjuvant chemotherapy in stage I–III NSCLC, so next we validated the results in external cohorts from the GEO database. Datasets GSE42127, GSE14814, GSE29013, and GSE68465 contained resected NSCLC cases treated with ACT or not and provided OS information (Table S1). ACT was found to improve OS in datasets GSE42127 and GSE14814 while decrease OS in datasets GSE29013 and GSE68465, thus validation was only performed in datasets GSE42127 and GSE14814 (Table S2).

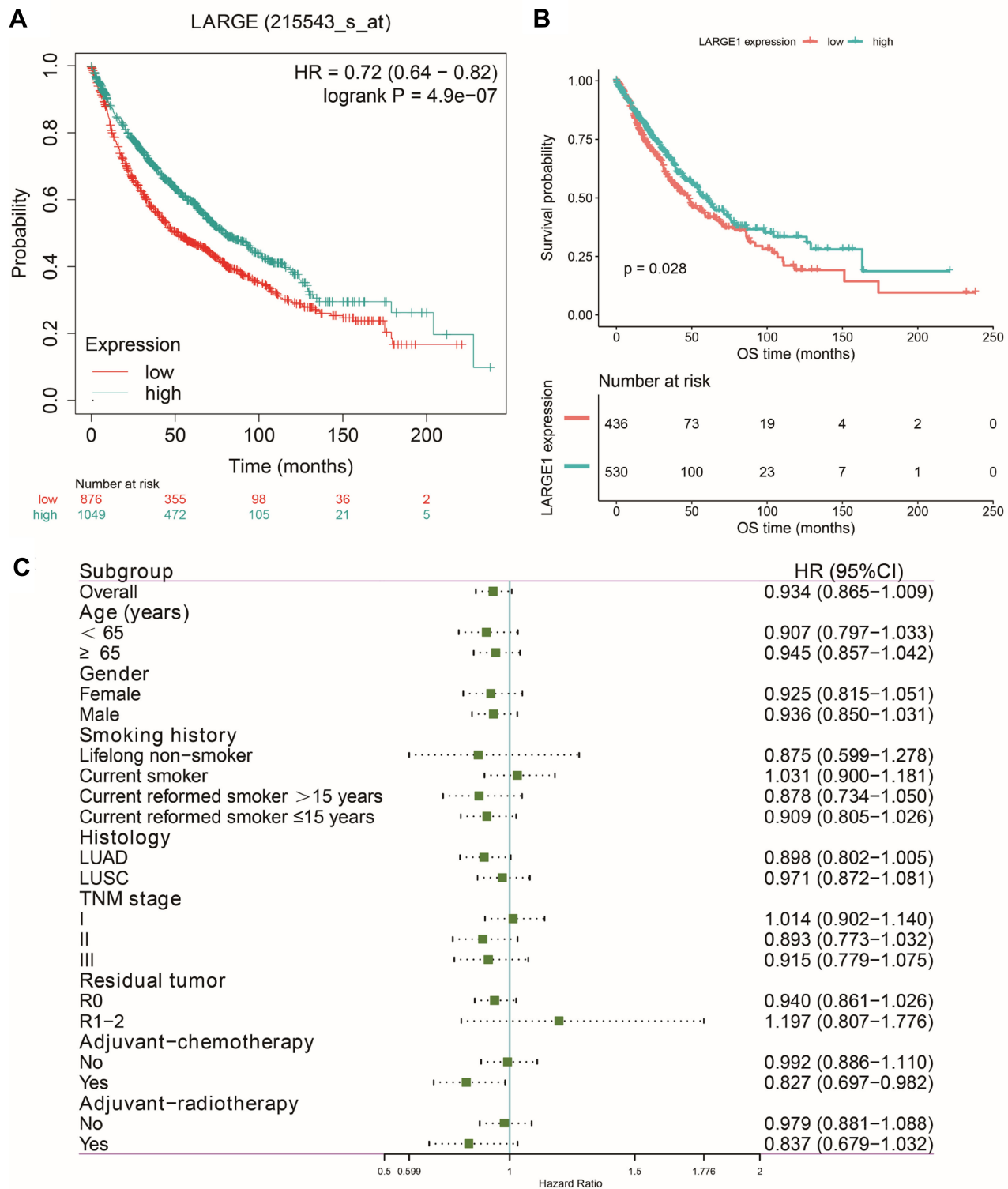


Figure 2 Effects of LARGE1 on overall survival (OS) in NSCLC. **(A)** OS difference between NSCLC patients with high and low LARGE1 expression analyzed by the web-tool, Kaplan-Meier plotter, using auto select best cutoff value and the JetSet best probe set (215543_s_at). **(B)** OS difference between TNM I-III NSCLC patients with high and low LARGE1 expression from TCGA, analyzed by Kaplan-Meier curve with Log rank test. **(C)** Forest plot of the hazard ratios (HRs) for the associations of increasing LARGE1 expression (serves as a continuous variable) with overall survival (OS) of patients with TNM I-III NSCLC in subgroups stratified by age, gender, smoking history, histology, TNM stage, margin, adjuvant chemotherapy, and adjuvant radiotherapy.

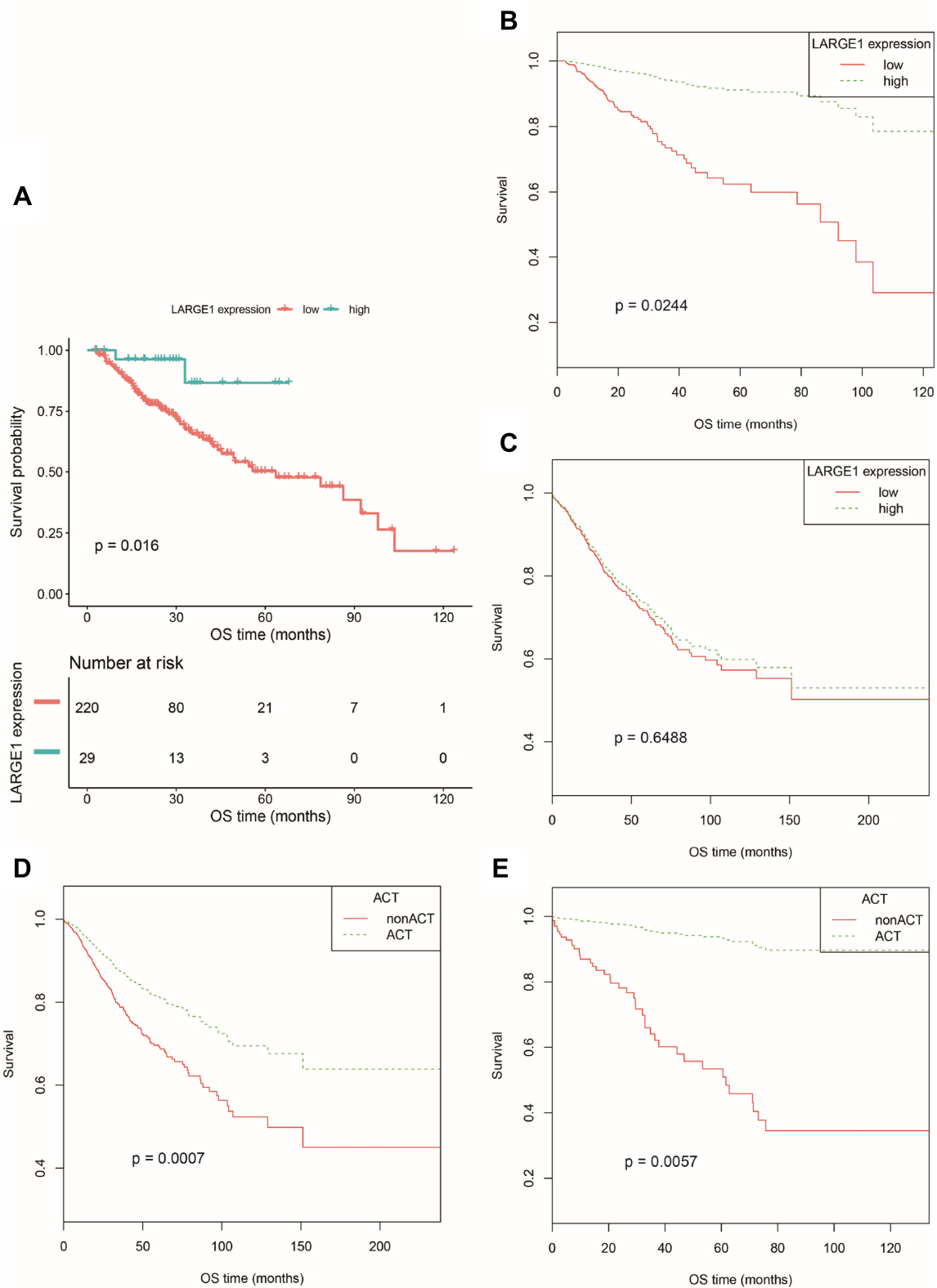


Figure 3 OS difference between TNM I-III NSCLC patients with high and low LARGE1 expression split by optimal cutoff value in subgroups stratified by adjuvant chemotherapy treatment (ACT) and between NSCLC patients with and without ACT in subgroups stratified by LARGE1 expression, demonstrated by Kaplan-Meier curves. **(A)** OS difference between NSCLC patients with high and low LARGE1 expression in the subgroup with ACT. **(B)** OS difference between NSCLC patients with high and low LARGE1 expression in subgroup of ACT adjusted by the confounding factors. **(C)** OS difference between NSCLC patients with high and low LARGE1 expression in subgroup of non-ACT adjusted by the confounding factors. **(D)** OS difference between NSCLC patients with and without ACT in the subgroup of low LARGE1 expression adjusted by the confounding factors. **(E)** OS difference between NSCLC patients with and without ACT in the subgroup of high LARGE1 expression adjusted by the confounding factors.

Table 2 Correlations of LARGE1 Expression and Chemotherapy with Overall Survival in Different Subgroups of Stage I–III NSCLC Patients at Multivariate Analyses

Parameters	HR	95% CI		P-value
TCGA				
LARGE1 in patients without ACT	0.922	0.650	1.308	0.649
LARGE1 in patients with ACT	0.196	0.047	0.810	0.024
ACT in patients with low LARGE1 expression	0.562	0.403	0.783	0.001
ACT in patients with high LARGE1 expression	0.103	0.020	0.515	0.006
Interaction of adjuvant chemotherapy and LARGE1	0.222	0.052	0.950	0.042
Combination of ACT and LARGE1 expression				
Low LARGE1/ACT vs nonACT	0.592	0.432	0.813	0.001
High LARGE1/ACT vs nonACT	0.124	0.031	0.505	0.004
GSE42127				
LARGE1 in patients without ACT	0.604	0.304	1.203	0.151
LARGE1 in patients with ACT	0.067	0.015	0.307	0.001
ACT in patients with low LARGE1 expression	1.973	0.621	6.272	0.249
ACT in patients with high LARGE1 expression	0.175	0.052	0.589	0.005
Interaction of adjuvant chemotherapy and LARGE1	0.152	0.032	0.721	0.018
Combination of ACT and LARGE1 expression				
Low LARGE1/ACT vs nonACT	2.162	0.884	5.285	0.091
High LARGE1/ACT vs nonACT	0.188	0.058	0.610	0.005
GSE14814				
LARGE1 in patients without ACT	1.119	0.447	2.797	0.811
LARGE1 in patients with ACT	0.299	0.100	0.897	0.031
ACT in patients with low LARGE1 expression	1.094	0.413	2.903	0.856
ACT in patients with high LARGE1 expression	0.179	0.062	0.517	0.002
Interaction of adjuvant chemotherapy and LARGE1	0.278	0.072	1.078	0.064
Combination of ACT and LARGE1 expression				
Low LARGE1/ACT vs nonACT	0.837	0.382	1.835	0.657
High LARGE1/ACT vs nonACT	0.320	0.134	0.766	0.011

Similar to the results from the TCGA cohort, in both GSE42127 and GSE14814 cohorts, LARGE1 expression was associated with OS in patients with ACT while not in patients without ACT, and ACT was associated with OS in patients with high LARGE1 expression while not in patients with low LARGE1 expression (Figures S1 and S2; Table 2). The whole cohort of patients was also classified into three groups based on LARGE1 expression and ACT as well as TCGA cohort, compared to patients with non-ACT and those with LARGE1/ACT, patients with high LARGE1/ACT were found to be associated with significantly improved OS (Figures S3 and S4; Table 2).

Potential Mechanisms During LARGE1 Alteration in Lung Adenocarcinoma

To elucidate the potential mechanisms during LARGE1 alteration in lung cancer, the Spearman correlations analysis results of more than 20,000 genes with LARGE1 in

lung adenocarcinoma were download from TCGA. The genes were ranked by the Spearman's rank r and subjected to Gene Set Enrichment Analysis (GSEA). KEGG pathways, GO biological processes, and hallmarks that were positively or negatively correlated with LARGE1 expression were explored. Figure 5 showed the top 10 negative- and top 10 positive-associated gene sets against KEGG (Figure 5A), HALLMARK (Figure 5B), and GO biological processes (Figure 5C) databases, respectively. KEGG Cell cycle pathway (Figure 6A), HALLMARK G2/M checkpoint (Figure 6B), and GO cell cycle G2/M phase transition (Figure 6C) were all negatively associated with LARGE1 expression, indicating LARGE1 might improve patients' outcomes via partly downregulating cell cycle in lung adenocarcinoma. The result was further validated by examining the association of LARGE1 expression with cell cycle pathway score, which was calculated by summing cell cycle-related proteins expression (Figure 6D).

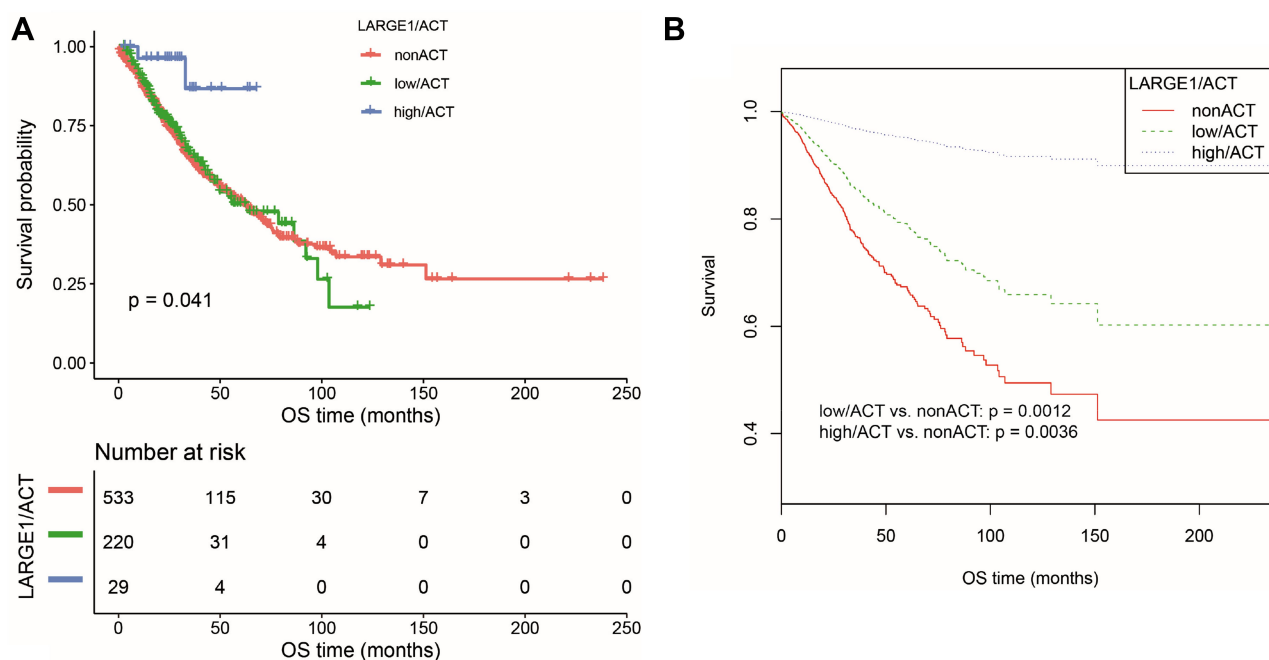


Figure 4 OS difference in TNM I-III NSCLC patients stratified by combining LARGE1 expression and adjuvant chemotherapy (ACT), ie, non-ACT, low LARGE1/ACT, and high LARGE1/ACT. (**A** and **B**) LARGE1 expression was split into high and low groups by optimal cutoff value; OS difference of patients with non-ACT, low LARGE1/ACT, and high LARGE1/ACT was analyzed by Kaplan-Meier curve (**A**), which was also analyzed by adjusting the confounding factors (**B**).

Discussion

α -Dystroglycan functions as an extracellular matrix (ECM) receptor²⁹ for several LG domain-containing basement membrane proteins via a unique heteropolysaccharide [-GlcA-beta1,3-Xyl-alpha1,3-]_n called matriglycan, including laminin,³⁰⁻³² perlecan,³³ agrin,³⁴ and Slit.³⁵ α -DG has been implicated in several cell functions (ie, growth control, differentiation, shape change and movement) which are all relevant in the process of tumor development and metastasis.^{36,37} Expression or glycosylation of α -DG has been identified to be lost or reduced in a variety of human cancer cell lines^{17,38} and different cancers including rhabdomyosarcoma,¹⁸ gliomas,³⁹ breast,^{40,41} prostate,⁴² colon,^{41,43} cervical,⁴⁴ vulvar,⁴⁴ gastric,⁴⁵ tongue,⁴⁶ and pancreatic cancers,⁴⁷ oral squamous cell carcinoma,⁴⁸ and renal cell carcinoma.⁴⁹ Such reduction or loss of α -DG seems to correlate with the biologically invasive character of primary tumors^{41,44,46,47,49-51} and associated with poor outcomes.^{41,43,45,47,49,51} LARGE1 is important for α -DG glycosylation by adding the laminin-binding repeating units of 3GlcA-1-3Xyl-1 onto α -DG¹⁶ and significant association of LARGE1 downregulation with abnormal α -DG glycosylation in cancer cells has been observed.^{17,18} In the present study, we, for the first time, have reported that LARGE1 mRNA expression was downregulated in lung

cancer tissues compared with adjacent tissues and normal lung tissues and in patients with advanced stages compared with early stages via analyzing the large dataset from the TCGA database. And there was a trend of significant association between LARGE1 downregulation with poor overall survival in stage I-III patients in overall and LARGE1 downregulation was significantly associated with poor overall survival in stage I-III patients receiving ACT.

ACT is the standard care for patients with NSCLC after complete resection, unfortunately, only a few of the patients get to benefit from ACT due to primary and acquired drug resistance.^{14,15} Therefore, it is critical to develop predictive biomarkers to identify the patients who will benefit from ACT and who will not benefit from ACT to avoid unnecessary toxicity and the delay of further treatment. Previously, low expression of ERCC1⁵² and high expression of TUBB3⁵³ were shown to be predictive of benefit from ACT in NSCLC patients from a large cohort or clinical trial. However, large cross-validation studies suggested that attempts to validate ERCC1 or TUBB3 as predictive biomarkers fell short.^{54,55} Similar results were derived for validating other single biomarkers including p53, RRM1, and p27.⁵⁶⁻⁵⁸ Here, we found high LARGE1 mRNA expression can be used to identify the patients who would benefit from ACT, which was also validated in external

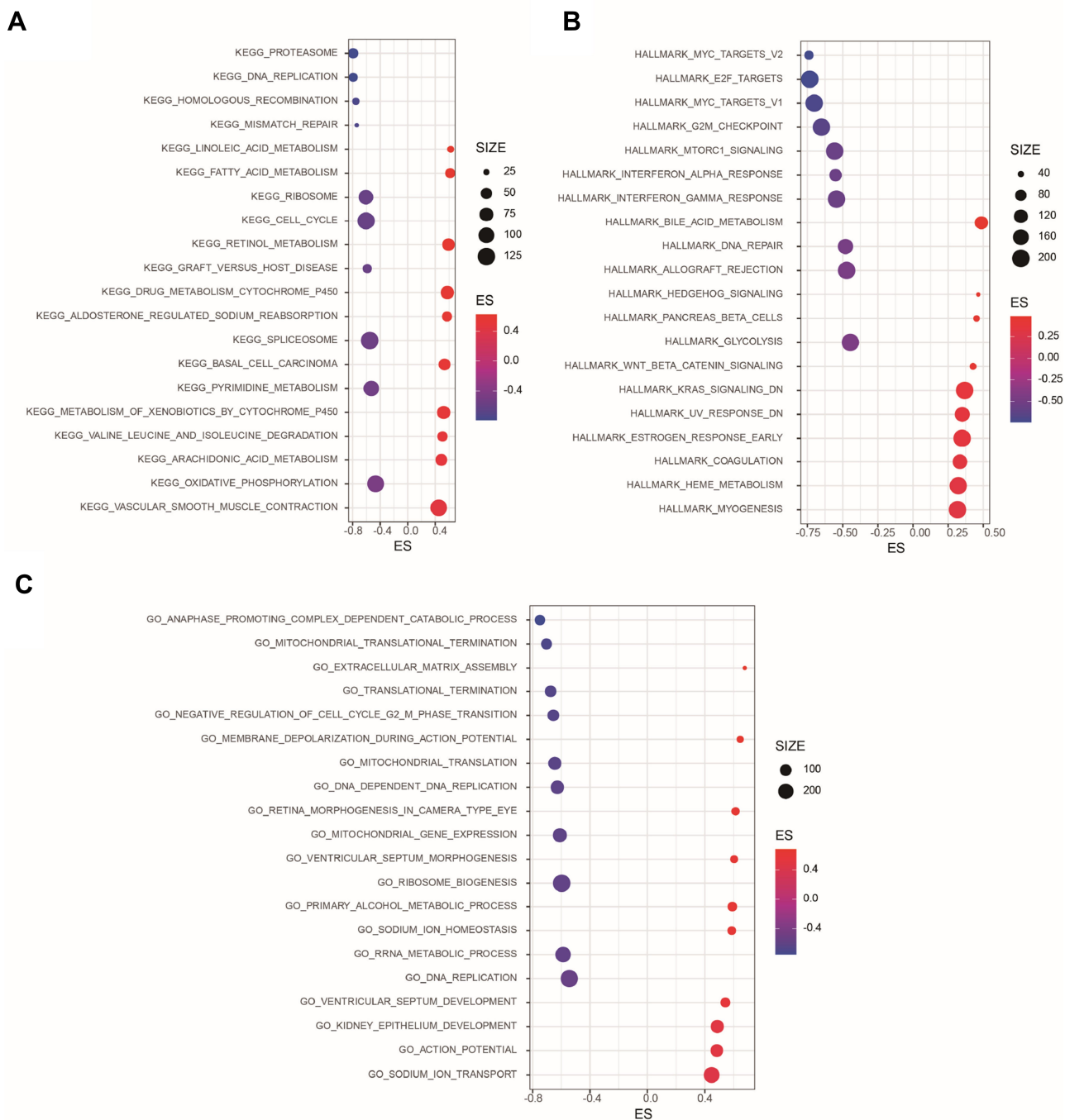


Figure 5 Gene Set Enrichment Analysis (GSEA) of LARGE1 co-expressed genes in lung adenocarcinoma (LUAD). Genes were ranked by Spearman's rank rho association with LARGE1 expression were subjected to GSEA with KEGG pathways, HALLMARKS, and GO biological processes as reference databases. **(A)** The top 10 negative and top 10 positive KEGG pathways associated with LARGE1 expression. **(B)** The top 10 negative and top 10 positive HALLMARKS associated with LARGE1 expression. **(C)** The top 10 negative and top 10 positive GO biological processes associated with LARGE1 expression.

cohorts, although this should be validated in more and larger multi-center studies.

LARGE1 is essential for α -DG glycosylation, which mediates the interaction between cells and the ECM and may play critical roles in the development and progression of many cancers by modulating cell growth, differentiation,

shape change, and movement.^{36,37,59} In our study, we performed GSEA and found cell cycle regulation during LARGE1 alteration might be involved in carcinogenesis of lung adenocarcinoma, which might also be associated with ACT sensitivity. The potential mechanisms of LARGE1 downregulation in lung cancer were also unknown. Zhang

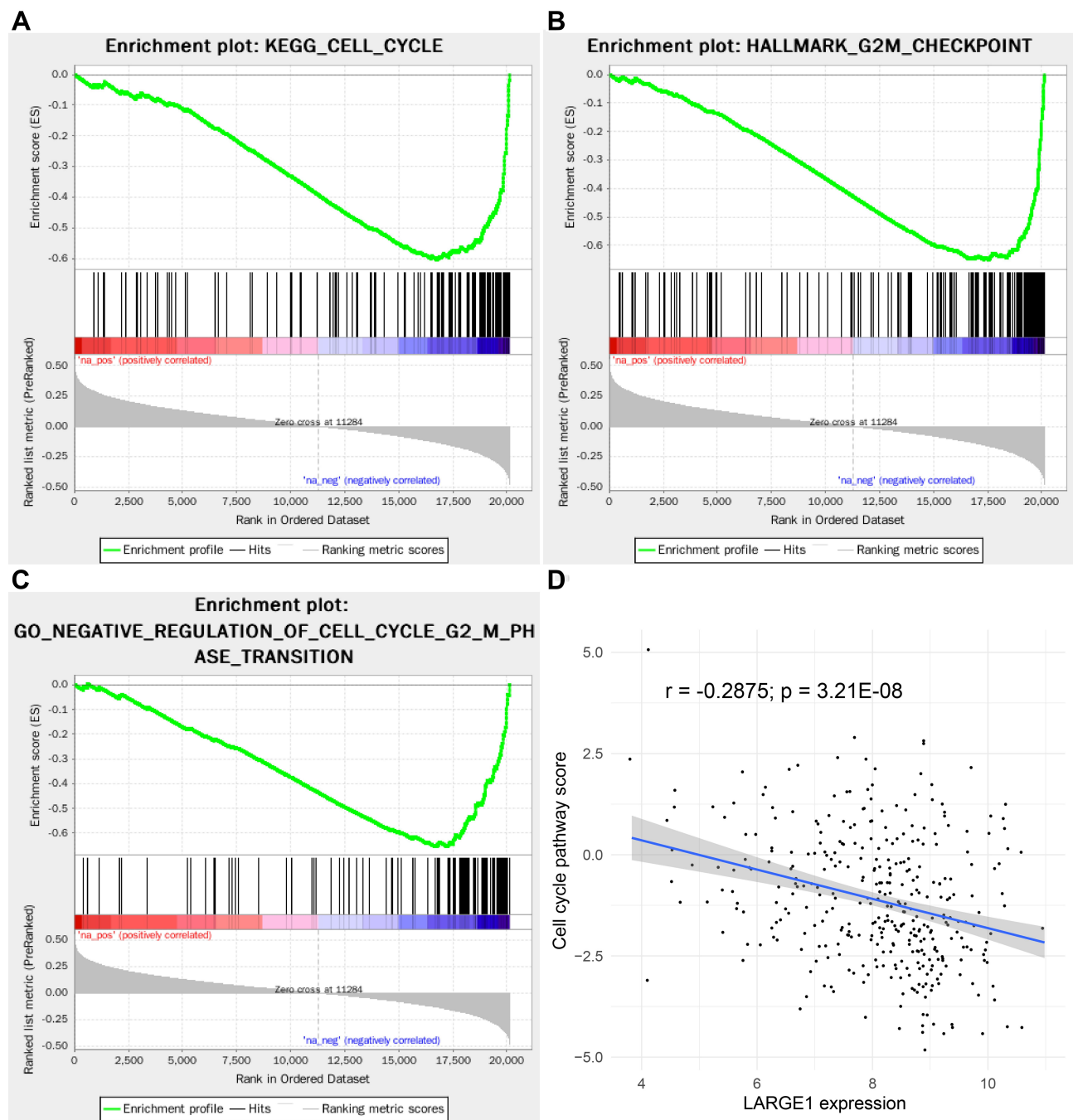


Figure 6 LARGE1 expression was negatively associated with cell cycle in lung adenocarcinoma (LUAD). (A–C) KEGG Cell cycle pathway (A), HALLMARK G2/M checkpoint (B), and GO cell cycle G2/M phase transition (C) were all negatively associated with LARGE1 expression. (D) The association of LARGE1 expression with cell cycle pathway score, which was calculated by summing cell cycle-related proteins expression.

et al reported that reduced LARGE1 expression was associated with its promoter hypermethylation in tongue cancer.⁴⁶ In lung cancer, we also identified the negative and significant association between LARGE1 mRNA expression and the methylation of the CpG islands at its promoter (data not shown). More in vitro and animal experiments should be performed to validate our results.

Conclusions

LARGE1 mRNA expression was aberrantly downregulated in NSCLC and especially in cancers with advanced stages. High LARGE1 mRNA expression was associated with favorable OS in NSCLC patients undergoing adjuvant chemotherapy rather than in patients without ACT and improved OS after ACT was also found in patients with high LARGE1

than those with low LARGE1. External cohorts confirmed these results, indicating that high LARGE expression could be used to identify the NSCLC patients who benefited from adjuvant chemotherapy.

Acknowledgment

This study was supported by the subjects from the Natural Science Foundation of China (NSFC81601849), Zhejiang Provincial Medicine and Health Technology Project (2019RC217), Wenzhou Science and Technology Bureau (Y20180109, Y20180254).

Disclosure

The authors report no conflicts of interest in this work.

References

- Siegel RL, Miller KD, Jemal A. Cancer statistics, 2020. *CA Cancer J Clin.* 2020;70(1):425.
- Travis WD. Pathology of lung cancer. *Clin Chest Med.* 2011;32(4):669–692. doi:10.1016/j.ccm.2011.08.005
- Torre LA, Siegel RL, Jemal A. Lung cancer statistics. *Adv Exp Med Biol.* 2016;893:893. doi:10.1007/978-3-319-24223-1_1
- Xue C, Hu Z, Jiang W, et al. National survey of the medical treatment status for non-small cell lung cancer (NSCLC) in China. *Lung Cancer.* 2012;77(2):371–375. doi:10.1016/j.lungcan.2012.04.014
- Hung -J-J, Jeng W-J, Hsu W-H, Huang B-S, Wu Y-C. Time trends of overall survival and survival after recurrence in completely resected stage I non-small cell lung cancer. *J Thorac Oncol.* 2012;7(2):397–405. doi:10.1097/JTO.0b013e31823b564a
- Su S, Scott WJ, Allen MS, et al. Patterns of survival and recurrence after surgical treatment of early stage non-small cell lung carcinoma in the ACOSOG Z0030 (ALLIANCE) trial. *J Thorac Cardiovasc Surg.* 2014;147(2):2. doi:10.1016/j.jtcvs.2013.10.001
- Chen W, Zheng R, Zhang S, Zhao P, Zeng H, Zou X. Report of cancer incidence and mortality in China, 2010. *Ann Transl Med.* 2014;2(7):61. doi:10.3978/j.issn.2305-5839.2014.04.05
- Galluzzi L, Buqué A, Kepp O, Zitvogel L, Kroemer G. Immunological effects of conventional chemotherapy and targeted anticancer agents. *Cancer Cell.* 2015;28(6):690–714. doi:10.1016/j.ccell.2015.10.012
- Arriagada R, Bergman B, Dunant A, Le Chevalier T. Cisplatin-based adjuvant chemotherapy in patients with completely resected non-small-cell lung cancer. *N Engl J Med.* 2004;350(4):351–360.
- Waller D, Peake MD, Stephens RJ, et al. Chemotherapy for patients with non-small cell lung cancer: the surgical setting of the Big Lung Trial. *Eur J Cardiothorac Surg.* 2004;26(1):173–182. doi:10.1016/j.ejcts.2004.03.041
- Winton T, Livingston R, Johnson D, et al. Vinorelbine plus cisplatin vs. observation in resected non-small-cell lung cancer. *N Engl J Med.* 2005;352(25):2589–2597. doi:10.1056/NEJMoa043623
- Douillard J-Y, Rosell R, De Lena M, et al. Adjuvant vinorelbine plus cisplatin versus observation in patients with completely resected stage IB–IIIA non-small-cell lung cancer (Adjuvant Navelbine International Trialist Association [ANITA]): a randomised controlled trial. *Lancet Oncol.* 2006;7(9):719–727. doi:10.1016/S1470-2045(06)70804-X
- Strauss GM, Herndon JE, Maddaus MA, et al. Adjuvant paclitaxel plus carboplatin compared with observation in stage IB non-small-cell lung cancer: CALGB 9633 with the Cancer and Leukemia Group B, Radiation Therapy Oncology Group, and North Central Cancer Treatment Group Study Groups. *J Clin Oncol.* 2008;26(31):5043–5051. doi:10.1200/JCO.2008.16.4855
- Pignon J-P, Tribodet H, Scagliotti GV, et al. Lung adjuvant cisplatin evaluation: a pooled analysis by the LACE Collaborative Group. *J Clin Oncol.* 2008;26(21):3552–3559. doi:10.1200/JCO.2007.13.9030
- Kelland L. The resurgence of platinum-based cancer chemotherapy. *Nat Rev Cancer.* 2007;7(8):573–584. doi:10.1038/nrc2167
- Inamori K, Hara Y, Willer T, et al. Xylosyl- and glucuronyltransferase functions of LARGE in α -dystroglycan modification are conserved in LARGE2. *Glycobiology.* 2013;23(3):295–302. doi:10.1093/glycob/cws152
- de Bernabé DB-V, Inamori K-I, Yoshida-Moriguchi T, et al. Loss of α -dystroglycan laminin binding in epithelium-derived cancers is caused by silencing of LARGE. *J Biol Chem.* 2009;284(17):11279–11284. doi:10.1074/jbc.C900007200
- Beltrán D, Anderson ME, Bharathy N, et al. Exogenous expression of the glycosyltransferase LARGE1 restores α -dystroglycan matriglycan and laminin binding in rhabdomyosarcoma. *Skeletal Muscle.* 2019;9(1):11. doi:10.1186/s13395-019-0195-0
- Goldman MJ, Craft B, Hastie M, et al. Visualizing and interpreting cancer genomics data via the Xena platform. *Nat Biotechnol.* 2020;38(6):675–678. doi:10.1038/s41587-020-0546-8
- Györfy B, Surowiak P, Budczies J, Lániczky A, Chellappan SP. Online survival analysis software to assess the prognostic value of biomarkers using transcriptomic data in non-small-cell lung cancer. *PLoS One.* 2013;8(12):e82241. doi:10.1371/journal.pone.0082241
- Tang H, Xiao G, Behrens C, et al. A 12-Genes Set Predicts Survival Benefits from Adjuvant Chemotherapy in Non-Small Cell Lung Cancer Patients. *Clin Cancer Res.* 2013;19(6):1577–1586. doi:10.1158/1078-0432.CCR-12-2321
- Zhu C-Q, Ding K, Strumpf D, Zhu CQ, Ding K, Strumpf D, et al. Prognostic and Predictive Gene Signature for Adjuvant Chemotherapy in Resected Non-Small-Cell Lung Cancer. *J Clin Oncol.* 2010;28(29):4417–4424. doi:10.1200/JCO.2009.26.4325
- Lung A, Shedden K, Taylor JM, et al. Gene expression-based survival prediction in lung adenocarcinoma: a multi-site, blinded validation study. *Nat Med.* 2008;14(8):822–827.
- Cerami E, Gao J, Dogrusoz U, et al. The cBio Cancer Genomics Portal: an open platform for exploring multidimensional cancer genomics data: figure 1. *Cancer Discov.* 2012;2(5):401. doi:10.1158/2159-8290.CD-12-0095
- Gao J, Aksoy BA, Dogrusoz U, et al. Integrative analysis of complex cancer genomics and clinical profiles using the cBioPortal. *Sci Signal.* 2013;6(269):pl1. doi:10.1126/scisignal.2004088
- Subramanian A, Tamayo P, Mootha VK, et al. Gene set enrichment analysis: A knowledge-based approach for interpreting genome-wide expression profiles. *Proc Natl Acad Sci U S A.* 2005;102(43):15545. doi:10.1073/pnas.0506580102
- Mootha VK, Lindgren CM, Eriksson K-F, et al. PGC-1 α -responsive genes involved in oxidative phosphorylation are coordinately down-regulated in human diabetes. *Nat Genet.* 2003;34(3):267–273. doi:10.1038/ng1180
- Akbani R, Ng PKS, Werner HMJ, et al. A pan-cancer proteomic perspective on The Cancer Genome Atlas. *Nat Commun.* 2014;5(1):3887. doi:10.1038/ncomms4887
- Barresi R. Dystroglycan: from biosynthesis to pathogenesis of human disease. *J Cell Sci.* 2006;119(2):199–207. doi:10.1242/jcs.02814
- Yamada H, Denzer AJ, Hori H, et al. Dystroglycan is a dual receptor for agrin and laminin-2 in Schwann cell membrane. *J Biol Chem.* 1996;271(38):23418–23423. doi:10.1074/jbc.271.38.23418
- Kanagawa M, Saito F, Kunz S, et al. Molecular recognition by LARGE is essential for expression of functional dystroglycan. *Cell.* 2004;117(7):953–964. doi:10.1016/j.cell.2004.06.003
- Kunz S, Sevilla N, McGavern DB, Campbell KP, Oldstone MBA. Molecular analysis of the interaction of LCMV with its cellular receptor α -dystroglycan. *J Cell Biol.* 2001;155(2):301–310. doi:10.1083/jcb.200104103

33. Gee SH, Montanaro F, Lindenbaum MH, Carbonetto S. Dystroglycan- α , a dystrophin-associated glycoprotein, is a functional agrin receptor. *Cell*. 1994;77(5):675–686. doi:10.1016/0092-8674(94)90052-3
34. Talts JF, Andac Z, Göhring W, Brancaccio A, Timpl R. Binding of the G domains of laminin $\alpha 1$ and $\alpha 2$ chains and perlecan to heparin, sulfatides, α -dystroglycan and several extracellular matrix proteins. *EMBO J*. 1999;18(4):863–870. doi:10.1093/emboj/18.4.863
35. Wright KM, Lyon KA, Leung H, Leahy DJ, Ma L, Ginty DD. Dystroglycan organizes axon guidance cue localization and axonal pathfinding. *Neuron*. 2012;76(5):931–944. doi:10.1016/j.neuron.2012.10.009
36. Sgambato A, Brancaccio A. The dystroglycan complex: from biology to cancer. *J Cell Physiol*. 2005;205(2):163–169. doi:10.1002/jcp.20411
37. Sgambato A, Di Salvatore MA, De Paola B, et al. Analysis of dystroglycan regulation and functions in mouse mammary epithelial cells and implications for mammary tumorigenesis. *J Cell Physiol*. 2006;207(2):520–529. doi:10.1002/jcp.20600
38. Losasso C, Di Tommaso F, Sgambato A, et al. Anomalous dystroglycan in carcinoma cell lines. *FEBS Lett*. 2000;484(3):194–198. doi:10.1016/S0014-5793(00)02157-8
39. Calogero A, Pavoni E, Gramaglia T, et al. Altered expression of alpha-dystroglycan subunit in human gliomas. *Cancer Biol Ther*. 2006;5(4):441–448. doi:10.4161/cbt.5.4.2546
40. Sgambato A, Camerini A, Faraglia B, et al. Increased expression of dystroglycan inhibits the growth and tumorigenicity of human mammary epithelial cells. *Cancer Biol Ther*. 2004;3(10):967–975. doi:10.4161/cbt.3.10.1132
41. Sgambato A, Migaldi M, Montanari M, et al. Dystroglycan expression is frequently reduced in human breast and colon cancers and is associated with tumor progression. *Am J Pathol*. 2003;162(3):849–860. doi:10.1016/S0002-9440(10)63881-3
42. Sgambato A, De Paola B, Migaldi M, et al. Dystroglycan expression is reduced during prostate tumorigenesis and is regulated by androgens in prostate cancer cells. *J Cell Physiol*. 2007;213(2):528–539. doi:10.1002/jcp.21130
43. Coco C, Zannoni GF, Caredda E, et al. Increased expression of CD133 and reduced dystroglycan expression are strong predictors of poor outcome in colon cancer patients. *J Exp Clin Cancer Res*. 2012;31(1):71. doi:10.1186/1756-9966-31-71
44. Sgambato A, Tarquini E, Resci F, et al. Aberrant expression of α -dystroglycan in cervical and vulvar cancer. *Gynecol Oncol*. 2006;103(2):397–404. doi:10.1016/j.ygyno.2006.03.059
45. Moon YW, Rha SY, Zhang X, et al. Increments of α -dystroglycan expression in liver metastasis correlate with poor survival in gastric cancer. *J Surg Oncol*. 2009;100(6):459–465. doi:10.1002/jso.21347
46. Zhang H-Z, Xia X-Y, Zhu F, Shen H, Song K, Shang Z-J. Correlation of deregulated like-acetylglucosaminyl transferase and aberrant α -dystroglycan expression with human tongue cancer metastasis. *J Oral Maxillofac Surg*. 2014;72(6):1106–1118. doi:10.1016/j.joms.2013.12.031
47. Jiang X, Rieder S, Giese NA, Friess H, Michalski CW, Kleeff KJ. Reduced α -dystroglycan expression correlates with shortened patient survival in pancreatic cancer. *J Surg Res*. 2011;171(1):120–126. doi:10.1016/j.jss.2009.11.730
48. Jing J, Lien CF, Sharma S, Rice J, Brennan PA, Górecki DC. Aberrant expression, processing and degradation of dystroglycan in squamous cell carcinomas. *Eur J Cancer*. 2004;40(14):2143–2151. doi:10.1016/j.ejca.2004.05.018
49. Sgambato A, Camerini A, Amoroso D, et al. Expression of dystroglycan correlates with tumor grade and predicts survival in renal cell carcinoma. *Cancer Biol Ther*. 2007;6(12):1840–1846. doi:10.4161/cbt.6.12.4983
50. Henry MD, Cohen MB, Campbell KP. Reduced expression of dystroglycan in breast and prostate cancer. *Hum Pathol*. 2001;32(8):791–795. doi:10.1053/hupa.2001.26468
51. Shen JG, Xu CY, Li X, et al. Dystroglycan is associated with tumor progression and patient survival in gastric cancer. *Pathol Oncol Res*. 2012;18(1):79–84. doi:10.1007/s12253-011-9419-2
52. Olaussen KA, Dunant A, Fouret P, et al. DNA repair by ERCC1 in non-small-cell lung cancer and cisplatin-based adjuvant chemotherapy. *N Engl J Med*. 2006;355(10):983–991. doi:10.1056/NEJMoa060570
53. Sève P, Lai R, Ding K, Sève P, Lai R, Ding K, et al. Class III β -tubulin expression and benefit from adjuvant cisplatin/vinorelbine chemotherapy in operable non-small cell lung cancer: analysis of NCIC JBR.10. *Clin Cancer Res*. 2007;13(3):994–999. doi:10.1158/1078-0432.CCR-06-1503
54. Reiman T, Lai R, Veillard AS, et al. Cross-validation study of class III beta-tubulin as a predictive marker for benefit from adjuvant chemotherapy in resected non-small-cell lung cancer: analysis of four randomized trials. *Ann Oncol*. 2012;23(1):86–93. doi:10.1093/annonc/mdr033
55. Friboulet L, Olaussen KA, Pignon J-P, et al. ERCC1 isoform expression and DNA repair in non-small-cell lung cancer. *N Engl J Med*. 2013;368(12):1101–1110. doi:10.1056/NEJMoa1214271
56. Olaussen KA, Postel-Vinay S. Predictors of chemotherapy efficacy in non-small-cell lung cancer: a challenging landscape. *Ann Oncol*. 2016;27(11):2004–2016. doi:10.1093/annonc/mdw321
57. Wallerek S, Sørensen JB. Biomarkers for efficacy of adjuvant chemotherapy following complete resection in NSCLC stages I–IIIA. *Eur Respir Rev*. 2015;24(136):340–355. doi:10.1183/16000617.00005814
58. Seymour L, Le Teuff G, Brambilla E, et al. LACE-Bio: validation of predictive and/or prognostic immunohistochemistry/histochemistry-based biomarkers in resected non-small-cell lung cancer. *Clin Lung Cancer*. 2019;20(2):2. doi:10.1016/j.clcc.2018.10.001
59. Petersen OW, Rønnev-Jessen L, Howlett AR, Bissell MJ. Interaction with basement membrane serves to rapidly distinguish growth and differentiation pattern of normal and malignant human breast epithelial cells. *Proc Natl Acad Sci U S A*. 1992;89(19):9064–9068. doi:10.1073/pnas.89.19.9064

Pharmacogenomics and Personalized Medicine

Publish your work in this journal

Pharmacogenomics and Personalized Medicine is an international, peer-reviewed, open access journal characterizing the influence of genotype on pharmacology leading to the development of personalized treatment programs and individualized drug selection for improved safety, efficacy and sustainability. This journal is indexed

Submit your manuscript here: <https://www.dovepress.com/pharmacogenomics-and-personalized-medicine-journal>

Dovepress

on the American Chemical Society's Chemical Abstracts Service (CAS). The manuscript management system is completely online and includes a very quick and fair peer-review system, which is all easy to use. Visit <http://www.dovepress.com/testimonials.php> to read real quotes from published authors.