


# White Matter Structural Connectivity and Its Impact on Psychogenic Non-Epileptic Seizures: An Evidence-Based Review

Daichi Sone 

Department of Psychiatry, Jikei University School of Medicine, Tokyo, Japan

Correspondence: Daichi Sone, Jikei University School of Medicine, 3-25-8, Nishishimbashi, Minato-ku, Tokyo, Japan, Tel +81-3-3433-1111, Fax +81-3-5401-1879, Email d-sone@jikei.ac.jp

**Abstract:** Psychiatric non-epileptic seizure (PNES), also known as a form of functional neurological disorders (FND), is a common but still underrecognized disorder presenting seizure-like symptoms and no electrophysiological abnormality. Despite the significant burden of this disorder, the neurobiological mechanisms are not clearly understood, which hinders the development of better diagnosis and treatment. In the recent neuroimaging research on PNES, brain network analysis has become a relevant topic beyond conventional methodologies. The human brain is a highly intricate system of interconnected regions that collaborate to facilitate a wide range of cognitive and behavioral functions. White matter tracts, which are comprised of bundles of axonal fibers, are the primary means by which information is transmitted between different brain regions. As such, comprehending the organization and structure of the brain's white matter network is critical for gaining insight into its functional architecture. This review article aims to provide an overview of the brain mechanisms underlying PNES, with a special focus on analyzing brain networks.

**Keywords:** psychogenic non-epileptic seizures, functional neurological disorders, neuroimaging, brain network, diffusion tensor imaging

## Introduction

Psychiatric non-epileptic seizures (PNES), also known as functional neurological disorders (FND),<sup>1</sup> presents with seizure symptoms similar to epileptic seizures, but there is no evidence that they are caused by abnormal electrical activity in the brain like epileptic seizures, and it is generally assumed that they are caused by psychological factors.<sup>2</sup> Although PNES is a common condition encountered in clinical practice,<sup>3</sup> it is often misunderstood and misdiagnosed, leading to inappropriate treatments and potentially harmful consequences.<sup>2</sup> For example, patients may be mistakenly diagnosed as having epileptic seizures and forced to take unnecessary and potentially harmful antiseizure medications for long periods of time, or they may be inappropriately treated as if they do not have the disease due to lack of objective laboratory findings.

Despite recent progress in the diagnosis and treatment of PNES,<sup>4,5</sup> there are still significant clinical challenges associated with this disorder, including under-recognition, misdiagnosis, and controversies regarding optimal treatment approaches. Moreover, as with many other psychiatric disorders, there are no established objective tests for PNES, and diagnosis is based solely on symptoms. Therefore, investigating the neural mechanisms of PNES can provide insights into diagnostic accuracy, effective treatments, and reduction of misconceptions and under-recognition.

This narrative review article aims to provide an overview of the brain mechanism of PNES, with a focus on brain network analysis. The human brain is a complex network of interconnected regions that work together to facilitate various cognitive and behavioral functions.<sup>6,7</sup> The connectivity between these regions is predominantly mediated by white matter tracts, which are bundles of axonal fibers that transmit information between different brain regions. Therefore, understanding the structure and organization of the brain's white matter network is essential for gaining insights into the brain's functional architecture.<sup>8,9</sup>

## PNES: Epidemiology, Diagnosis, and Treatment

The prevalence of PNES varies considerably from study to study and is estimated at 2–100 per 100,000 persons.<sup>3,4</sup> However, access to diagnostic tests and other factors vary by country and region,<sup>2</sup> so further research is needed to determine the exact figure. It has also been suggested that whether or not PNES is considered a disease may vary by culture,<sup>2</sup> which further complicates research and understanding of the condition. It is consistently reported to be more common in women (60–80%),<sup>10</sup> with most cases occurring in the 20s and 30s.<sup>10</sup> On the other hand, PNES in the elderly is not uncommon,<sup>11</sup> with reports of onset ranging from 4–94 years of age indeed,<sup>3</sup> so it can occur in almost any age group, from children to the elderly.

The gold standard for the diagnosis of PNES is the presence of seizures consistent with PNES and the documentation of seizure symptoms and absence of electroencephalogram (EEG) abnormalities on long-term video-electroencephalography monitoring.<sup>2</sup> In the past, diagnosis was primarily based on exclusion of other abnormalities, but more recently, diagnosis by aggressive rule-in has been advocated.<sup>4</sup> This is a trend toward finding symptoms characteristic of various PNES and positively diagnosing PNES by those characteristic symptoms. However, the problem is that diagnosis remains based solely on symptoms and no objective test has been established, a challenge similar to that of many other psychiatric disorders.

PNES is known to be associated with a variety of psychiatric disorders,<sup>12–14</sup> including anxiety disorders, post-traumatic stress disorder (PTSD), somatoform disorders, and personality disorders, with an overall reported comorbidity of 53–100%.<sup>15</sup> Past traumatic experiences, especially childhood adverse events such as neglect or sexual abuse, are often associated.<sup>16,17</sup> Intellectual disability is also frequent, and PNES with intellectual disability is sometimes categorized as a subgroup.<sup>2,15</sup> They are also often associated with functional somatic symptoms such as pain and fatigue. On the other hand, patients with traumatic brain injury (TBI) and epilepsy are also known to higher prevalence of comorbid PNES.<sup>15</sup>

In terms of treatment, rehabilitative and psychotherapeutic approaches are known to have therapeutic effects to a certain degree.<sup>4</sup> In addition, stress reduction by modifying the patient's surroundings may help PNES to disappear, especially in patients with intellectual disabilities.<sup>18</sup> While these psychiatric complications and the therapeutic effects of currently available treatments still strongly suggest a link between psychosocial factors and PNES, there are cases in which psychological stress is not always clear, complicating the issue. Regarding prognosis, the overall remission rate of PNES is estimated at 40–50%, which is higher than that of other subtypes of FND, but there is a large variation among studies.<sup>19</sup>

## The Mystery of PNES: Why It Occurs?

The neurobiological mechanism of PNES, ie, what exactly is happening in the brain of individuals with PNES, is not clearly understood at this time. However, a growing body of research suggests that abnormal brain activity may play a role in the development and maintenance of these seizures.

Previous studies have implicated a number of brain regions in the pathophysiology of PNES, including the limbic system, and the prefrontal cortex. The limbic system, which includes structures such as the amygdala and the hippocampus, is involved in emotional processing and memory formation, and has been shown to be altered in patients with PNES. Although morphological MRI analysis studies have not reported large abnormalities in these regions,<sup>20</sup> functional and white matter fiber abnormalities have been reported repeatedly. For example, abnormalities in uncinate fasciculus (UF) fibers have suggested increased connectivity in the PNES.<sup>21,22</sup> On the other hand, Diez et al reported reduced limbic white matter integrity in mixed FND patients.<sup>23</sup> Functional MRI studies have also suggested abnormalities in neural activity and connectivity in the hippocampus and amygdala.<sup>24,25</sup>

The prefrontal cortex, which is involved in executive functioning and decision-making, has also been implicated in the pathophysiology of PNES. Decreases in gray matter volume and cortical thickness in prefrontal areas such as the cingulate gyrus, middle frontal gyrus, and superior frontal gyrus have been reported,<sup>26,27</sup> suggesting that these regions may be chronically dysregulated in this patient population. Nuclear imaging studies, including brain glucose metabolism derived from <sup>18</sup>F-fluorodeoxyglucose (FDG) positron emission tomography (PET) or cerebral blood flow based on single-photon emission computerized tomography (SPECT), also reported reduced uptakes in prefrontal cortex.<sup>28,29</sup> In addition, several functional magnetic resonance imaging (MRI) studies have reported abnormal neural activities in this

area.<sup>24,25,30,31</sup> These abnormalities in the prefrontal cortex may reflect cognitive and emotional aspects and behavioral control difficulties in PNES patients.

There are several areas of abnormality in the PNES outside of the limbic structures and prefrontal cortex, most notably the insular cortex and supplementary motor area (SMA), which have been repeatedly reported. The insular cortex is a region of the brain that is located deep within the lateral sulcus, a fold in the cerebral cortex. It is involved in a wide range of functions, including the processing of sensory information, the integration of emotional and cognitive processes, and the regulation of autonomic functions such as heart rate and blood pressure.<sup>32–34</sup> In fact, insular abnormalities are repeatedly reported in PNES using both structural and functional imaging,<sup>31,35–38</sup> which would support the involvement of emotional and cognitive dysfunctions in PNES.

The SMA is a region of the cerebral cortex that is located in the medial surface of the frontal lobe, anterior to the primary motor cortex. It plays an important role in the planning and execution of movements, particularly complex movements that require the coordination of multiple muscle groups.<sup>39</sup> The reported functional and structural abnormalities within SMA in PNES<sup>26,30,37,40</sup> may accord with the motor symptoms in this disorder.

Taken together, these studies suggest that abnormal brain activity in regions involved in emotional processing, cognitive control, motor, and autonomic regulation may contribute to the development and maintenance of PNES. However, further research is needed to clarify the exact mechanisms underlying PNES and to identify potential targets for treatment.

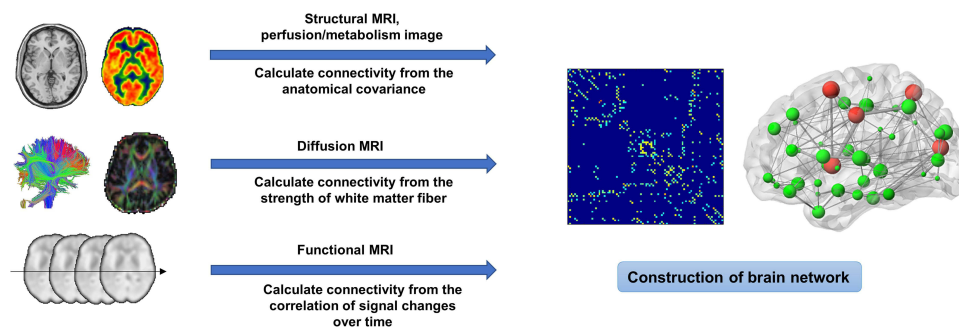
## Brain Network Analysis: An Emerging Biomarker for Neuropsychiatry

Network analysis has emerged as a powerful tool for characterizing the complex organization of brain connectivity. In the human brain, which has about 86 billion neurons and 100 trillion synapses,<sup>41,42</sup> pathological changes are rarely confined to a single point and often spread to other areas via axons.<sup>43</sup> Therefore, the limitations of discussing the brain only locally and the need for network analysis have been proposed in recent years. While network analysis is expected in epilepsy due to the presence of abnormal neuronal circuit by seizures,<sup>44</sup> PNES is believed to result from dysfunctions in the brain networks that control emotional and cognitive processing, which can lead to the manifestation of seizure-like symptoms. Therefore, network analysis may help identify the specific brain regions and pathways that are involved in PNES and how they are connected to each other, which could provide insights into the underlying mechanisms of the disorder.

In particular, graph theory has become a popular framework for analyzing brain networks due to its ability to quantify the topology of complex systems.<sup>45</sup> Graph theoretical analysis involves the construction of a network model, using the different brain regions as nodes and the connectivity as edges. The topological properties of the network can then be analyzed using graph theoretical measures, such as network density, clustering coefficient, and betweenness centrality, to gain insights into the organization and efficiency of the network.

In brain imaging research, various imaging modalities can be applied to network analysis.<sup>46</sup> In functional MRI, connectivity can be calculated from the correlation of signal changes over time in each region, and in diffusion MRI, connectivity can be calculated from the strength of white matter fiber connections between regions. In structural MRI and perfusion/metabolic imaging, connectivity can be calculated from the correlation of gray matter volume and blood flow at each site (Figure 1). Furthermore, in recent years, networks based on similarity can also be calculated from structural MRI on an individual level,<sup>47</sup> revealing the effects of age and abnormalities in brain diseases.<sup>48,49</sup>

Diffusion tensor imaging (DTI) is a non-invasive neuroimaging technique that has revolutionized our ability to investigate the white matter integrity of the brain.<sup>50</sup> This technique is sensitive to the diffusion of water molecules in brain tissue and can be used to infer the orientation and integrity of white matter tracts. This information can be used to construct a structural network model of the brain's white matter connectivity. White matter structural network analysis using DTI and graph theoretical analysis provides a unique perspective on the brain's structural connectivity and organization. The human brain comprises interconnected regions, which are predominantly connected by white matter tracts that serve as conduits for transmitting information between different brain regions. Thus, comprehending the structure and organization of the brain's white matter network is crucial to gain insights into its functional architecture.<sup>8,9</sup>



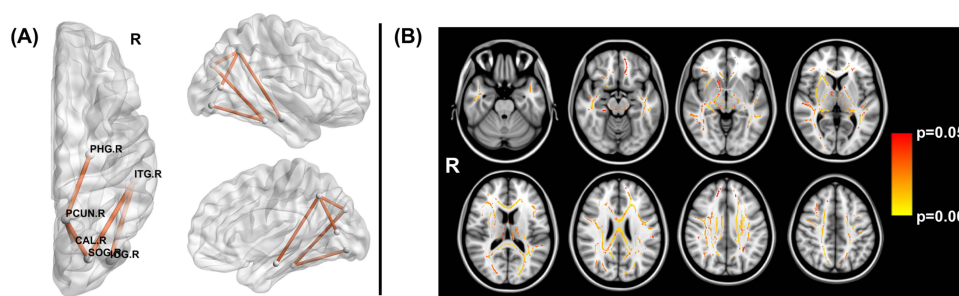
**Figure 1** Brain network construction using neuroimaging modalities.

## Network Abnormalities in PNES

There are already several neuroimaging studies on PNES using network analysis, most of which utilized functional MRI.<sup>51</sup> Despite the relatively small sample size in each study, these studies have provided important initial evidence into the neural mechanisms of PNES. Findings of functional connectivity (FC) in PNES included reduced coupling strength with structural connectivity,<sup>52</sup> abnormal FC density,<sup>30</sup> stronger connectivity in emotion, executive function, and movement areas,<sup>36</sup> altered FC patterns in the insular subregions,<sup>37</sup> increased FC of the amygdalae to various brain regions,<sup>53</sup> or reduced connectivity in the visual networks.<sup>54</sup>

Regarding the white matter structural network analysis derived from DTI, our previous study showed reduced global and local network efficiency as well as reduced network connectivity in the right posterior region<sup>55</sup> (Figure 2A). The abnormal structural network area in PNES involved the right precuneus and parahippocampal gyrus, suggesting some specific impairment of this region such as default mode network dysfunction.<sup>56</sup> Patients with PNES also showed widely reduced integrity in the deep white matters (Figure 2B), and the reduced deep white matter integrity in PNES was later reported by another study using advanced diffusion imaging, ie, neurite orientation dispersion and density imaging (NODDI).<sup>57</sup> On the other hand, earlier studies on DTI in PNES reported an increase or no difference in fractional anisotropy (FA).<sup>21,22</sup> In fact, it is said that white matter analysis by DTI in PNES is in its early stages,<sup>58</sup> and the accumulation of evidence is expected in the future.

There are also brain network studies on PNES using neurophysiological data, such as EEG or magnetoencephalography (MEG).<sup>59–64</sup> The accumulation of studies using multiple modalities is expected to further contribute to the elucidation of the mechanism of PNES. On the other hand, as we have seen, there is some variation in the results obtained by various methods of network analysis, and it is important to examine and standardize the methods in addition to accumulating research.



**Figure 2** White matter integrity and network abnormalities in PNES.

**Notes:** (A) Reduced network connectivity in the right posterior region. (B) Widely reduced fractional anisotropy (FA) particularly in deep white matters. The yellow-red color denotes p-values in the comparison with healthy controls. Adapted from Sone D, Sato N, Ota M, Kimura Y, Matsuda H. Widely Impaired White Matter Integrity and Altered Structural Brain Networks in Psychogenic Non-Epileptic Seizures. *Neuropsychiatr Dis Treat.* 2019;15:3549–3555.<sup>55</sup>

**Abbreviations:** PHG, parahippocampal gyrus; ITG, inferior temporal gyrus; PCUN, precuneus; CAL, calcarine; SOG, superior occipital gyrus; IOG, inferior occipital gyrus.

## Problems and Future Directions

These studies are still in their early stages, with small sample sizes and low levels of evidence.<sup>51</sup> The requirement for long-term video-EEG monitoring to obtain a definitive diagnosis of PNES may hinder the ability to obtain a large sample size, adding to the challenges posed by the condition's under-recognition and lack of attention. In addition, the presence or absence of intellectual disability, diverse onset age, and various comorbid psychiatric disorders may affect the results of the analysis as confounding factors.

One of the biggest problems, again, is that the diagnosis is based solely on symptoms, and no objective test abnormalities have been established. We do not even know for sure if PNES is a biologically valid disease category, and the same is true for FND and its subcategories, eg, functional movement disorder and functional seizure. It is assumed that emotion regulation problems are involved in the development of symptoms in PNES,<sup>65</sup> but since PNES has not been biologically established, this too may be a matter of speculation.

Future directions include the use of large, multicenter studies to ensure sample size and external validity, and longitudinal data analysis to investigate changes over time and predict associations with symptoms and treatment response. Combining multimodal imaging may provide further relevant evidence. Advances in analytical methods are also important, with machine learning, for example, another major trend in neurobiological research.

## Conclusion

PNES remains a clinical challenge due to its under-recognition and misdiagnosis, and the lack of objective diagnostic tests. However, advances in brain network analysis have shed light on the neural mechanisms of PNES, providing potential avenues for improved diagnostic accuracy and effective treatments. Further research is needed to reveal the pathophysiology of PNES and to develop better interventions for patients with this disorder.

## Acknowledgments

This work was supported by grants from the Japan Society for the Promotion of Science (KAKENHI; No. JP21K15720), the Japan Epilepsy Research Foundation (JERF TENKAN 22007), and the Uehara Memorial Foundation (all to DS).

## Disclosure

The author reports no conflicts of interest in this work.

## References

1. Wardrop A, Dworetzky BA, Barkley GL, et al. How to do things with words: two seminars on the naming of functional (psychogenic, non-epileptic, dissociative, conversion,...) seizures. *Seizure*. 2021;93:102–110. doi:10.1016/j.seizure.2021.10.016
2. Kanemoto K, LaFrance WC, Duncan R, et al. PNES around the world: where we are now and how we can close the diagnosis and treatment gaps-an ILAE PNES Task Force report. *Epilepsia Open*. 2017;2(3):307–316. doi:10.1002/epi4.12060
3. Hallett M, Aybek S, Dworetzky BA, McWhirter L, Staab JP, Stone J. Functional neurological disorder: new subtypes and shared mechanisms. *Lancet Neurol*. 2022;21(6):537–550. doi:10.1016/S1474-4422(21)00422-1
4. Aybek S, Perez DL. Diagnosis and management of functional neurological disorder. *BMJ*. 2022;376:o64. doi:10.1136/bmj.o64
5. Lopez MR, LaFrance WC. Treatment of Psychogenic Nonepileptic Seizures. *Curr Neurol Neurosci Rep*. 2022;22(8):467–474. doi:10.1007/s11910-022-01209-3
6. Rubinov M, Sporns O. Complex network measures of brain connectivity: uses and interpretations. *NeuroImage*. 2010;52(3):1059–1069. doi:10.1016/j.neuroimage.2009.10.003
7. Sporns O. Structure and function of complex brain networks. *Dialogues Clin Neurosci*. 2013;15(3):247–262. doi:10.31887/DCNS.2013.15.3/osporns
8. Griffa A, Baumann PS, Thiran JP, Hagmann P. Structural connectomics in brain diseases. *NeuroImage*. 2013;80:515–526. doi:10.1016/j.neuroimage.2013.04.056
9. Jones DK, Knosche TR, Turner R. White matter integrity, fiber count, and other fallacies: the do's and don'ts of diffusion MRI. *NeuroImage*. 2013;73:239–254. doi:10.1016/j.neuroimage.2012.06.081
10. Lidstone SC, Costa-Parke M, Robinson EJ, Ercoli T, Stone J, Group FGS. Functional movement disorder gender, age and phenotype study: a systematic review and individual patient meta-analysis of 4905 cases. *J Neurol Neurosurg Psychiatry*. 2022;93(6):609–616. doi:10.1136/jnnp-2021-328462
11. Duncan R, Oto M, Martin E, Pelosi A. Late onset psychogenic nonepileptic attacks. *Neurology*. 2006;66(11):1644–1647. doi:10.1212/01.wnl.0000223320.94812.7a
12. Baslet G. Psychogenic non-epileptic seizures: a model of their pathogenic mechanism. *Seizure*. 2011;20(1):1–13. doi:10.1016/j.seizure.2010.10.032
13. O'Brien FM, Fortune GM, Dicker P, et al. Psychiatric and neuropsychological profiles of people with psychogenic nonepileptic seizures. *Epilepsy Behav*. 2015;43:39–45. doi:10.1016/j.yebeh.2014.11.012

14. Diprose W, Sundram F, Menkes DB. Psychiatric comorbidity in psychogenic nonepileptic seizures compared with epilepsy. *Epilepsy Behav.* 2016;56:123–130. doi:10.1016/j.yebeh.2015.12.037
15. Ertan D, Aybek S, LaFrance WC, et al. Functional (psychogenic non-epileptic/dissociative) seizures: why and how? *J Neurol Neurosurg Psychiatry.* 2022;93(2):144–157. doi:10.1136/jnnp-2021-326708
16. Maniglio R. The impact of child sexual abuse on health: a systematic review of reviews. *Clin Psychol Rev.* 2009;29(7):647–657. doi:10.1016/j.cpr.2009.08.003
17. Proenca IC, Castro LH, Jorge CL, Marchetti RL. Emotional trauma and abuse in patients with psychogenic nonepileptic seizures. *Epilepsy Behav.* 2011;20(2):331–333. doi:10.1016/j.yebeh.2010.11.015
18. Kanemoto K, Goji H, Tadokoro Y, Kato E, Oshima T. Psychogenic non-epileptic seizure in patients with intellectual disability with special focus on choice of therapeutic intervention. *Seizure.* 2017;45:2–6. doi:10.1016/j.seizure.2016.10.025
19. Gelauff J, Stone J. Prognosis of functional neurologic disorders. *Handb Clin Neurol.* 2016;139:523–541. doi:10.1016/B978-0-12-801772-2.00043-6
20. McSweeney M, Reuber M, Levita L. Neuroimaging studies in patients with psychogenic non-epileptic seizures: a systematic meta-review. *Neuroimage Clin.* 2017;16:210–221. doi:10.1016/j.nicl.2017.07.025
21. Hernando KA, Szaflarski JP, Ver Hoef LW, Lee S, Allendorfer JB. Uncinate fasciculus connectivity in patients with psychogenic nonepileptic seizures: a preliminary diffusion tensor tractography study. *Epilepsy Behav.* 2015;45:68–73. doi:10.1016/j.yebeh.2015.02.022
22. Lee S, Allendorfer JB, Gaston TE, et al. White matter diffusion abnormalities in patients with psychogenic non-epileptic seizures. *Brain Res.* 2015;1620:169–176. doi:10.1016/j.brainres.2015.04.050
23. Diez I, Williams B, Kubicki MR, Makris N, Perez DL. Reduced limbic microstructural integrity in functional neurological disorder. *Psychol Med.* 2021;51(3):485–493. doi:10.1017/S0033291719003386
24. Allendorfer JB, Nenert R, Hernando KA, et al. fMRI response to acute psychological stress differentiates patients with psychogenic non-epileptic seizures from healthy controls - A biochemical and neuroimaging biomarker study. *Neuroimage Clin.* 2019;24:101967. doi:10.1016/j.nicl.2019.101967
25. Balachandran N, Goodman AM, Allendorfer JB, et al. Relationship between neural responses to stress and mental health symptoms in psychogenic nonepileptic seizures after traumatic brain injury. *Epilepsia.* 2021;62(1):107–119. doi:10.1111/epi.16758
26. Labate A, Cerasa A, Mula M, et al. Neuroanatomic correlates of psychogenic nonepileptic seizures: a cortical thickness and VBM study. *Epilepsia.* 2012;53(2):377–385. doi:10.1111/j.1528-1167.2011.03347.x
27. Perez DL, Matin N, Williams B, et al. Cortical thickness alterations linked to somatoform and psychological dissociation in functional neurological disorders. *Hum Brain Mapp.* 2018;39(1):428–439. doi:10.1002/hbm.23853
28. Varma AR, Moriarty J, Costa DC, et al. HMPAO SPECT in non-epileptic seizures: preliminary results. *Acta Neurol Scand.* 1996;94(2):88–92. doi:10.1111/j.1600-0404.1996.tb07035.x
29. Arthuis M, Micoulaud-Franchi JA, Bartolomei F, McGonigal A, Guedj E. Resting cortical PET metabolic changes in psychogenic non-epileptic seizures (PNES). *J Neurol Neurosurg Psychiatry.* 2015;86(10):1106–1112. doi:10.1136/jnnp-2014-309390
30. Ding J, An D, Liao W, et al. Abnormal functional connectivity density in psychogenic non-epileptic seizures. *Epilepsy Res.* 2014;108(7):1184–1194. doi:10.1016/j.eplepsyres.2014.05.006
31. van der Kruijs SJ, Jagannathan SR, Bodde NM, et al. Resting-state networks and dissociation in psychogenic non-epileptic seizures. *J Psychiatr Res.* 2014;54:126–133. doi:10.1016/j.jpsychires.2014.03.010
32. Critchley HD. Neural mechanisms of autonomic, affective, and cognitive integration. *J Comp Neurol.* 2005;493(1):154–166. doi:10.1002/cne.20749
33. Paulus MP, Stein MB. An insular view of anxiety. *Biol Psychiatry.* 2006;60(4):383–387. doi:10.1016/j.biopsych.2006.03.042
34. Craig AD. How do you feel—now? The anterior insula and human awareness. *Nat Rev Neurosci.* 2009;10(1):59–70. doi:10.1038/nrn2555
35. Neiman ES, Noe KH, Drazkowski JF, Sirven JI, Roarke MC. Utility of subtraction ictal SPECT when video-EEG fails to distinguish atypical psychogenic and epileptic seizures. *Epilepsy Behav.* 2009;15(2):208–212. doi:10.1016/j.yebeh.2009.02.042
36. van der Kruijs SJ, Bodde NM, Vaessen MJ, et al. Functional connectivity of dissociation in patients with psychogenic non-epileptic seizures. *J Neurol Neurosurg Psychiatry.* 2012;83(3):239–247. doi:10.1136/jnnp-2011-300776
37. Li R, Liu K, Ma X, et al. Altered functional connectivity patterns of the insular subregions in psychogenic nonepileptic seizures. *Brain Topogr.* 2015;28(4):636–645. doi:10.1007/s10548-014-0413-3
38. Diez I, Ortiz-Teran L, Williams B, et al. Corticolimbic fast-tracking: enhanced multimodal integration in functional neurological disorder. *J Neurol Neurosurg Psychiatry.* 2019;90(8):929–938. doi:10.1136/jnnp-2018-319657
39. Nachev P, Kennard C, Husain M. Functional role of the supplementary and pre-supplementary motor areas. *Nat Rev Neurosci.* 2008;9(11):856–869. doi:10.1038/nrn2478
40. Li R, Li Y, An D, Gong Q, Zhou D, Chen H. Altered regional activity and inter-regional functional connectivity in psychogenic non-epileptic seizures. *Sci Rep.* 2015;5:11635. doi:10.1038/srep11635
41. Pakkenberg B, Pelvig D, Marnier L, et al. Aging and the human neocortex. *Exp Gerontol.* 2003;38(1–2):95–99. doi:10.1016/s0531-5565(02)00151-1
42. Herculano-Houzel S. The human brain in numbers: a linearly scaled-up primate brain. *Front Hum Neurosci.* 2009;3:31. doi:10.3389/fnhum.09.031.2009
43. Fornito A, Zalesky A, Breakspear M. The connectomics of brain disorders. *Nat Rev Neurosci.* 2015;16(3):159–172. doi:10.1038/nrn3901
44. Bernhardt BC, Bonilha L, Gross DW. Network analysis for a network disorder: the emerging role of graph theory in the study of epilepsy. *Epilepsy Behav.* 2015;50:162–170. doi:10.1016/j.yebeh.2015.06.005
45. Fornito A, Zalesky A, Breakspear M. Graph analysis of the human connectome: promise, progress, and pitfalls. *NeuroImage.* 2013;80:426–444. doi:10.1016/j.neuroimage.2013.04.087
46. Liao X, Vasilakos AV, He Y. Small-world human brain networks: perspectives and challenges. *Neurosci Biobehav Rev.* 2017;77:286–300. doi:10.1016/j.neubiorev.2017.03.018
47. Tijms BM, Series P, Willshaw DJ, Lawrie SM. Similarity-based extraction of individual networks from gray matter MRI scans. *Cerebral Cortex.* 2012;22(7):1530–1541. doi:10.1093/cercor/bhr221
48. Shigemoto Y, Sato N, Sone D, et al. Single-subject gray matter networks in temporal lobe epilepsy patients with hippocampal sclerosis. *Epilepsy Res.* 2021;177:106766. doi:10.1016/j.eplepsyres.2021.106766
49. Shigemoto Y, Sato N, Maikusa N, et al. Age and sex-related effects on single-subject gray matter networks in healthy participants. *J Pers Med.* 2023;13(3):419. doi:10.3390/jpm13030419

50. Smith SM, Jenkinson M, Johansen-Berg H, et al. Tract-based spatial statistics: voxelwise analysis of multi-subject diffusion data. *NeuroImage*. 2006;31(4):1487–1505. doi:10.1016/j.neuroimage.2006.02.024
51. Foroughi AA, Nazeri M, Asadi-Pooya AA. Brain connectivity abnormalities in patients with functional (psychogenic nonepileptic) seizures: a systematic review. *Seizure*. 2020;81:269–275. doi:10.1016/j.seizure.2020.08.024
52. Ding JR, An D, Liao W, et al. Altered functional and structural connectivity networks in psychogenic non-epileptic seizures. *PLoS One*. 2013;8(5):e63850. doi:10.1371/journal.pone.0063850
53. Szafarski JP, Allendorfer JB, Nenert R, et al. Facial emotion processing in patients with seizure disorders. *Epilepsy Behav*. 2018;79:193–204. doi:10.1016/j.yebeh.2017.12.004
54. Dienstag A, Ben-Naim S, Gilad M, Ekstein D, Arzy S, Eitan R. Memory and motor control in patients with psychogenic nonepileptic seizures. *Epilepsy Behav*. 2019;98(Pt A):279–284. doi:10.1016/j.yebeh.2019.07.026
55. Sone D, Sato N, Ota M, Kimura Y, Matsuda H. Widely impaired white matter integrity and altered structural brain networks in psychogenic non-epileptic seizures. *Neuropsychiatr Dis Treat*. 2019;15:3549–3555. doi:10.2147/NDT.S235159
56. Broyd SJ, Demanuele C, Debener S, Helps SK, James CJ, Sonuga-Barke EJ. Default-mode brain dysfunction in mental disorders: a systematic review. *Neurosci Biobehav Rev*. 2009;33(3):279–296. doi:10.1016/j.neubiorev.2008.09.002
57. Goodman AM, Allendorfer JB, Blum AS, et al. White matter and neurite morphology differ in psychogenic nonepileptic seizures. *Ann Clin Transl Neurol*. 2020;7(10):1973–1984. doi:10.1002/acn3.51198
58. Perez DL, Nicholson TR, Asadi-Pooya AA, et al. Neuroimaging in functional neurological disorder: state of the field and research agenda. *Neuroimage Clin*. 2021;30:102623. doi:10.1016/j.nicl.2021.102623
59. Knyazeva MG, Jalili M, Frackowiak RS, Rossetti AO. Psychogenic seizures and frontal disconnection: EEG synchronisation study. *J Neurol Neurosurg Psychiatry*. 2011;82(5):505–511. doi:10.1136/jnnp.2010.224873
60. Barzegaran E, Joudaki A, Jalili M, Rossetti AO, Frackowiak RS, Knyazeva MG. Properties of functional brain networks correlate with frequency of psychogenic non-epileptic seizures. *Front Hum Neurosci*. 2012;6:335. doi:10.3389/fnhum.2012.00335
61. Xue Q, Wang ZY, Xiong XC, Tian CY, Wang YP, Xu P. Altered brain connectivity in patients with psychogenic non-epileptic seizures: a scalp electroencephalography study. *J Int Med Res*. 2013;41(5):1682–1690. doi:10.1177/0300060513496170
62. Barzegaran E, Carmeli C, Rossetti AO, Frackowiak RS, Knyazeva MG. Weakened functional connectivity in patients with psychogenic non-epileptic seizures (PNES) converges on basal ganglia. *J Neurol Neurosurg Psychiatry*. 2016;87(3):332–337. doi:10.1136/jnnp-2014-309483
63. Umesh S, Tikka SK, Goyal N, Sinha VK, Nizamie SH. Aberrant gamma band cortical sources and functional connectivity in adolescents with psychogenic non-epileptic seizures: a preliminary report. *Psychiatry Res*. 2017;247:51–54. doi:10.1016/j.psychres.2016.11.003
64. Boutros N, Kang SS, Uysal U, et al. Preliminary evidence for limbic-frontal hyperexcitability in psychogenic nonepileptic seizure patients. *Clin EEG Neurosci*. 2019;50(4):287–295. doi:10.1177/1550059418792454
65. Jungilligens J, Paredes-Echeverri S, Popkirov S, Barrett LF, Perez DL. A new science of emotion: implications for functional neurological disorder. *Brain*. 2022;145(8):2648–2663. doi:10.1093/brain/awac204

## Neuropsychiatric Disease and Treatment

Dovepress

### Publish your work in this journal

Neuropsychiatric Disease and Treatment is an international, peer-reviewed journal of clinical therapeutics and pharmacology focusing on concise rapid reporting of clinical or pre-clinical studies on a range of neuropsychiatric and neurological disorders. This journal is indexed on PubMed Central, the 'PsycINFO' database and CAS, and is the official journal of The International Neuropsychiatric Association (INA). The manuscript management system is completely online and includes a very quick and fair peer-review system, which is all easy to use. Visit <http://www.dovepress.com/testimonials.php> to read real quotes from published authors.

Submit your manuscript here: <https://www.dovepress.com/neuropsychiatric-disease-and-treatment-journal>